

216 *South Alma School Road / Mesa, AZ 85210*

77,011 SQ FT Multi-Tenant Building / Monument Signage / 40' Wide Spaces / Close to Loop 101, 202, & US-60 Fwys

Located in Opportunity Zone



SIGNAGE
MONUMENT



10'x12'
ROLL-UP DOORS



3 Phase
HEAVY POWER



SPRINKLERS
FIRE SUPPRESSION



PARKING
±100 Spaces



NATURAL GAS
TO PROPERTY

For more information, please contact:

Eric Jones
Owner/Agent
D: 480.966.8671
M: 602.291.9400
ejones@cpi.az.com

David Bean
D: 480.214.1105
M: 480.299.5964
dbean@cpi.az.com

Cory Sposi
D: 480.621.4025
M: 480.586.1195
csposi@cpi.az.com



COMMERCIAL PROPERTIES INC.

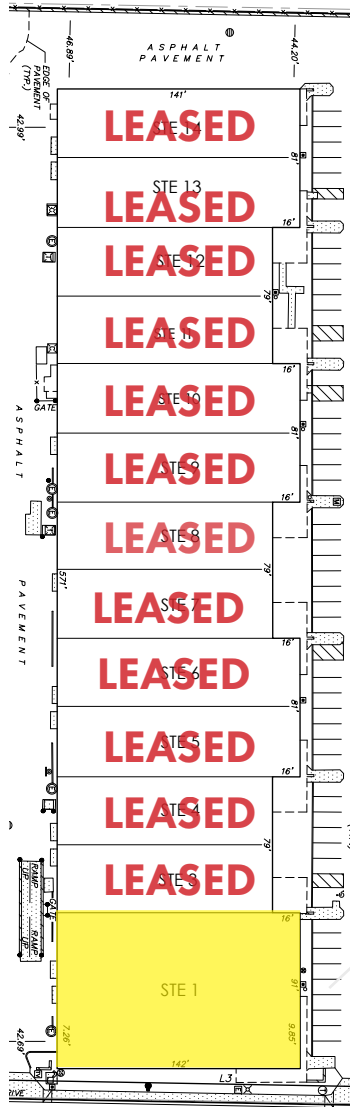
Locally Owned. Globally Connected. CORFAC

TEMPE: 2323 W University Drive, Tempe, AZ 85281 | 480.966.2301
SCOTTSDALE: 8767 E Via de Commercio, Suite 101, Scottsdale, AZ 85258 | www.cpi.az.com

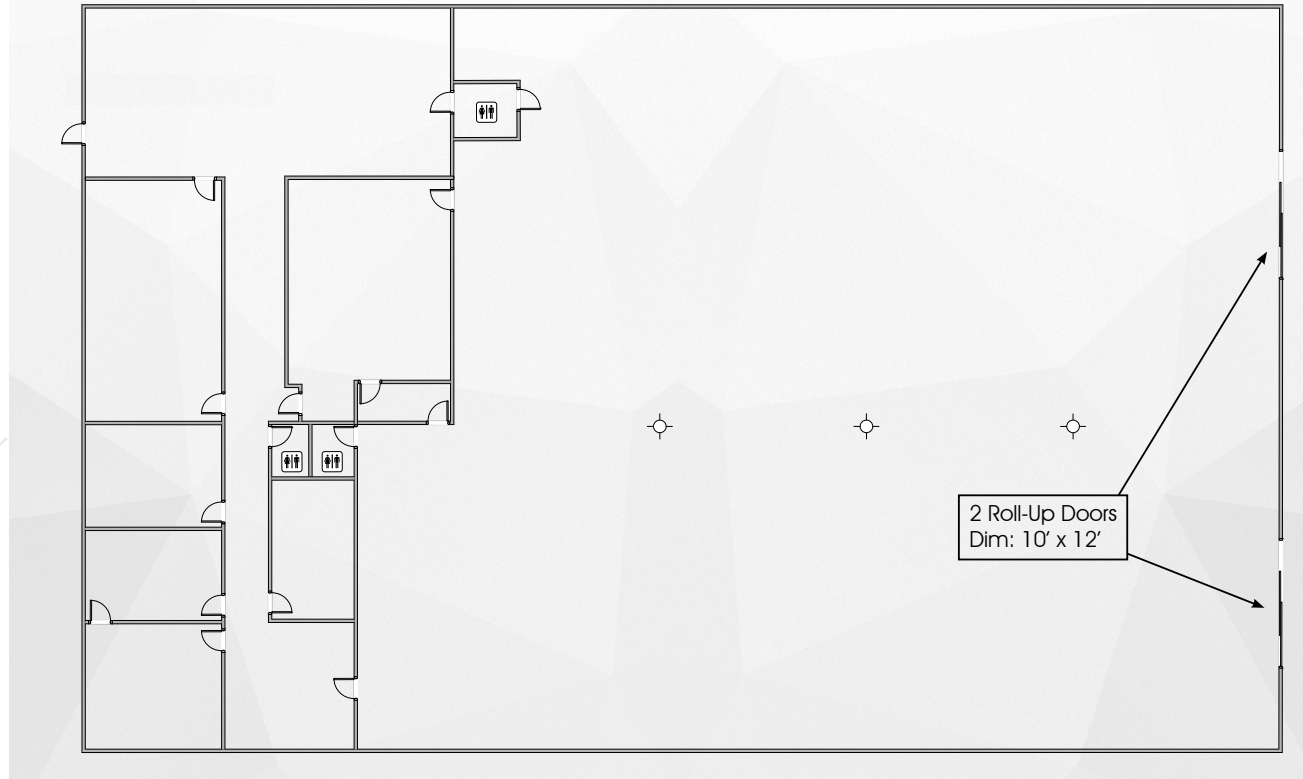
The listing agent has an ownership interest in this property. The information contained herein has been obtained from various sources. We have no reason to doubt its accuracy; however, J & J Commercial Properties, Inc. has not verified such information and makes no guarantee, warranty or representation about such information. The prospective buyer or lessee should independently verify all dimensions, specifications, floor plans, and all information prior to the lease or purchase of the property. All offerings are subject to prior sale, lease, or withdrawal from the market without prior notice.

09 26 25

216 South Alma School Road / Mesa, AZ 85210



216 S Alma School Rd - Suite 1
±12,878 SF



Floor plan for illustrative purposes only.

For more information, please contact:

Eric Jones
Owner/Agent
D 480.966.8671
M 602.291.9400
ejones@cpiaz.com

David Bean
D: 480.214.1105
M: 480.299.5964
dbean@cpiaz.com

Cory Sposi
D: 480.621.4025
M: 480.586.1195
csposi@cpiaz.com

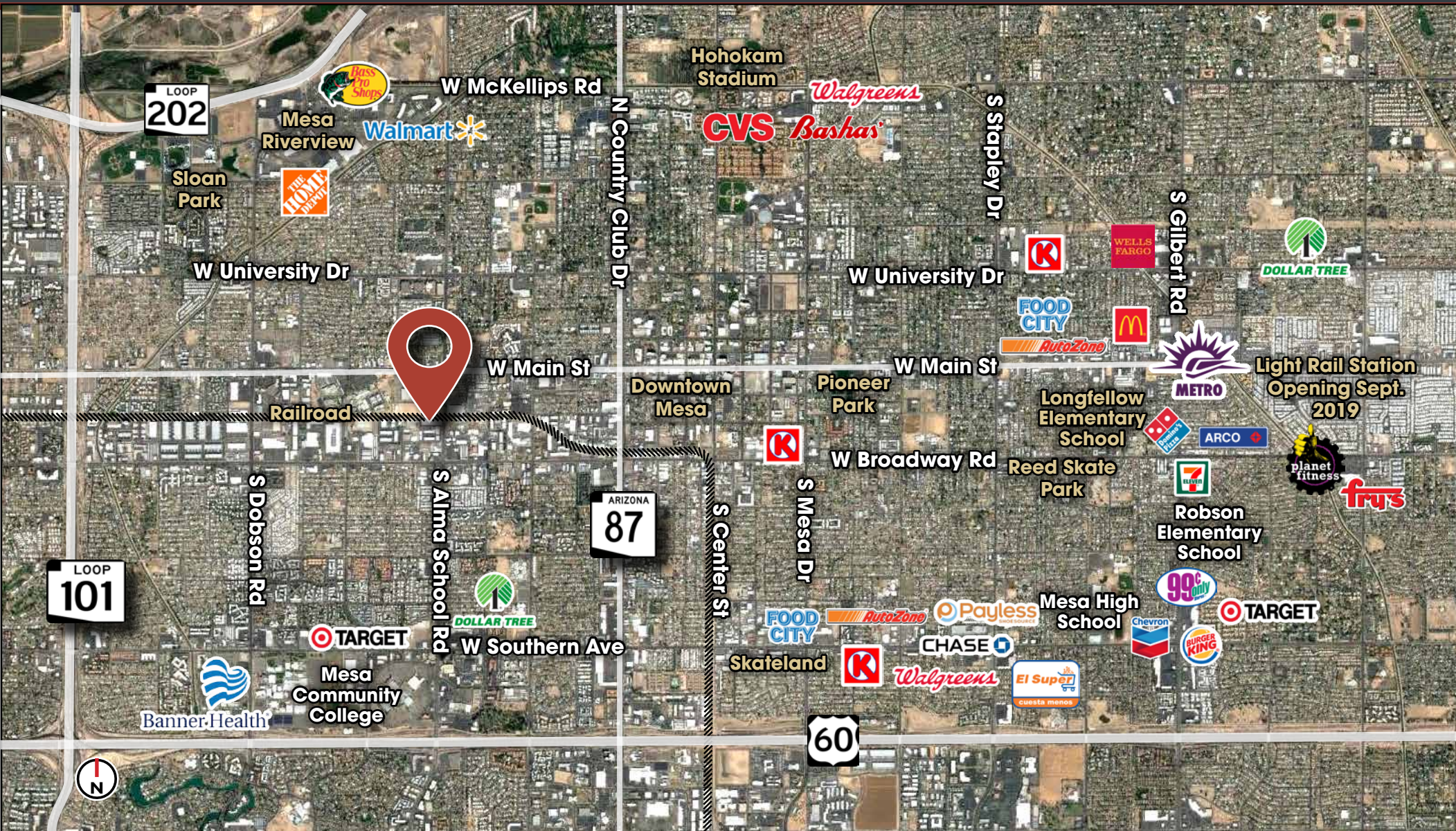
The listing agent has an ownership interest in this property. The information contained herein has been obtained from various sources. We have no reason to doubt its accuracy; however, J & J Commercial Properties, Inc. has not verified such information and makes no guarantee, warranty or representation about such information. The prospective buyer or lessee should independently verify all dimensions, specifications, floor plans, and all information prior to the lease or purchase of the property. All offerings are subject to prior sale, lease, or withdrawal from the market without prior notice.



COMMERCIAL PROPERTIES INC.

Locally Owned. Globally Connected. CORFAC INTERNATIONAL

216 South Alma School Road / Mesa, AZ 85210



For more information, please contact:

Eric Jones
Owner/Agent
D 480.966.8671
M 602.291.9400
ejones@cpijaz.com

David Bean
D: 480.214.1105
M: 480.299.5964
dbean@cpijaz.com

Cory Sposi
D: 480.621.4025
M: 480.586.1195
csposi@cpijaz.com

The listing agent has an ownership interest in this property. The information contained herein has been obtained from various sources. We have no reason to doubt its accuracy; however, J & J Commercial Properties, Inc. has not verified such information and makes no guarantee, warranty or representation about such information. The prospective buyer or lessee should independently verify all dimensions, specifications, floor plans, and all information prior to the lease or purchase of the property. All offerings are subject to prior sale, lease, or withdrawal from the market without prior notice.



COMMERCIAL PROPERTIES INC.

Locally Owned. Globally Connected. CORFAC INTERNATIONAL

216 *South Alma School Road / Mesa, AZ 85210*



Demographics	1 Mile	3 Mile	5 Mile
2019 Total Population:	23,800	182,835	411,137
2024 Population:	25,517	199,455	444,647
Pop Growth 2019-2024:	7.21%	9.09%	8.15%
2019 Total Households:	8,542	70,613	154,256
Avg Household Size:	2.70	2.50	2.50
Average Age:	32.30	33.90	34.50
Median Household Inc:	\$38,790	\$39,600	\$47,460

Source: CoStar



For more information, please contact:

Eric Jones
Owner/Agent
 D 480.966.8671
 M 602.291.9400
 ejones@cpiaz.com

David Bean
 D: 480.214.1105
 M: 480.299.5964
 dbean@cpiaz.com

Cory Sposi
 D: 480.621.4025
 M: 480.586.1195
 csposi@cpiaz.com

The listing agent has an ownership interest in this property. The information contained herein has been obtained from various sources. We have no reason to doubt its accuracy; however, J & J Commercial Properties, Inc. has not verified such information and makes no guarantee, warranty or representation about such information. The prospective buyer or lessee should independently verify all dimensions, specifications, floor plans, and all information prior to the lease or purchase of the property. All offerings are subject to prior sale, lease, or withdrawal from the market without prior notice.



COMMERCIAL PROPERTIES INC.

Locally Owned. Globally Connected. CORFAC INTERNATIONAL