

850 | Flynn Road CAMARILLO, CA 93012

NEWLY RENOVATED CLASS A INDUSTRIAL FOR SALE OR LEASE

MAJOR PRICE REDUCTION



FEDER & ASSOCIATES
COMMERCIAL REAL ESTATE



850 FLYNN ROAD

CAMARILLO, CA 93012

RON FEDER

PRESIDENT

(818) 222-0404

RFEDER@RJFEDER.COM

DRE # 00983855

JESSICA CHAMBERLAIN

COMMERCIAL ASSOCIATE

(818) 222-0404

JESSICA@RJFEDER.COM

DRE # 01898574



CONFIDENTIALITY & DISCLAIMER

The information contained in the following Marketing Brochure is proprietary and strictly confidential. It is intended to be reviewed only by the party receiving it from Peak Commercial and should not be made available to any other person or entity without the written consent of Peak Commercial. This Marketing Brochure has been prepared to provide summary, unverified information to prospective purchasers, and to establish only a preliminary level of interest in the subject property. The information contained herein is not a substitute for a thorough due diligence investigation. Peak Commercial has not made any investigation, and makes no warranty or representation, with respect to the income or expenses for the subject property, the future projected financial performance of the property, the size and square footage of the property and improvements, the presence or absence of contaminating substances, PCB's or asbestos, the compliance with State and Federal regulations, the physical condition of the improvements thereon, or the financial condition or business prospects of any tenant, or any tenant's plans or intentions to continue its occupancy of the subject property. The information contained in this Marketing Brochure has been obtained from sources we believe to be reliable; however, Peak Commercial has not verified, and will not verify, any of the information contained herein, nor has Peak Commercial conducted any investigation regarding these matters and makes no warranty or representation whatsoever regarding the accuracy or completeness of the information provided. All potential buyers must take appropriate measures to verify all of the information set forth herein. Any rent or income information in this offering memorandum, with the exception of actual, historical rent collections, represent good faith projections of potential future rent only, and Peak Commercial makes no representations as to whether such rent may actually be attainable. Local, state, and federal laws regarding restrictions on rent increases may make these projections impossible, and Buyer and its advisors should conduct their own investigation to determine whether such rent increases are legally permitted and reasonably attainable.

NON-ENDORSEMENT NOTICE

Peak Commercial is not affiliated with, sponsored by, or endorsed by any commercial tenant or lessee identified in this marketing package. The presence of any corporation's logo or name is not intended to indicate or imply affiliation with, or sponsorship or endorsement by, said corporation of Peak Commercial, its affiliates or subsidiaries, or any agent, product, service, or commercial listing of Peak Commercial, and is solely included for the purpose of providing tenant lessee information about this listing to prospective customers.

An aerial photograph of an industrial park with several large, light-colored buildings and parking lots. In the background, there are rolling hills and mountains under a clear sky. The image is overlaid with a dark blue gradient.

01

EXECUTIVE SUMMARY

BUILDING SIZE
21,657

LOT SIZE SF
47,045

YEAR BUILT
1986

PRIOR LIST PRICE
▪ ~~\$5,825,000~~

NEW LIST PRICE
▪ **\$5,399,000**

SALE PRICE/SF
▪ ~~\$268.96~~ **\$249.29**

LEASE RATE
▪ \$0.99/SF NNN
Year 1

PROPERTY TYPE
▪ INDUSTRIAL

ZONING
▪ M-1

CLASS
▪ A

SPRINKLERED Yes

CLEAR HEIGHT 26'

GL DOORS/DIM 1 / 12'x14'

POWER
A: 1200
V: 277/480
O: 3 W: 4

PARKING
52
2.0:1

Solar Capacity included! ▪ approx. 50,000 kWh a year Solar System included!

TOTAL OFFICE SF
10,149

INCLUDED OFFICE MEZZ
5,160

RESTROOMS
4



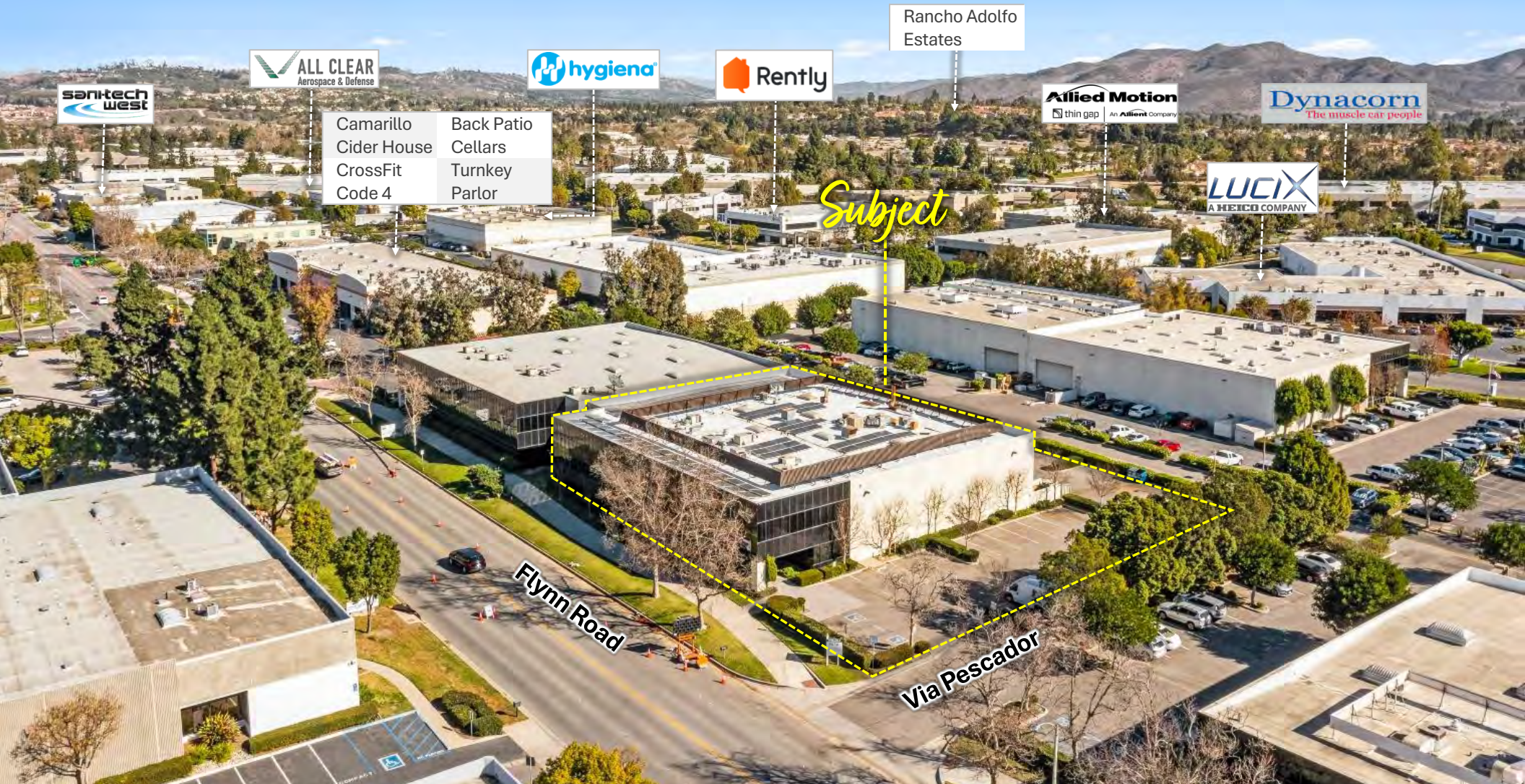
NEWLY RENOVATED

New Roof! New Warehouse Ceiling Insulation! New Warehouse Lighting! New Paint and Flooring!



Facing East

850 FLYNN ROAD

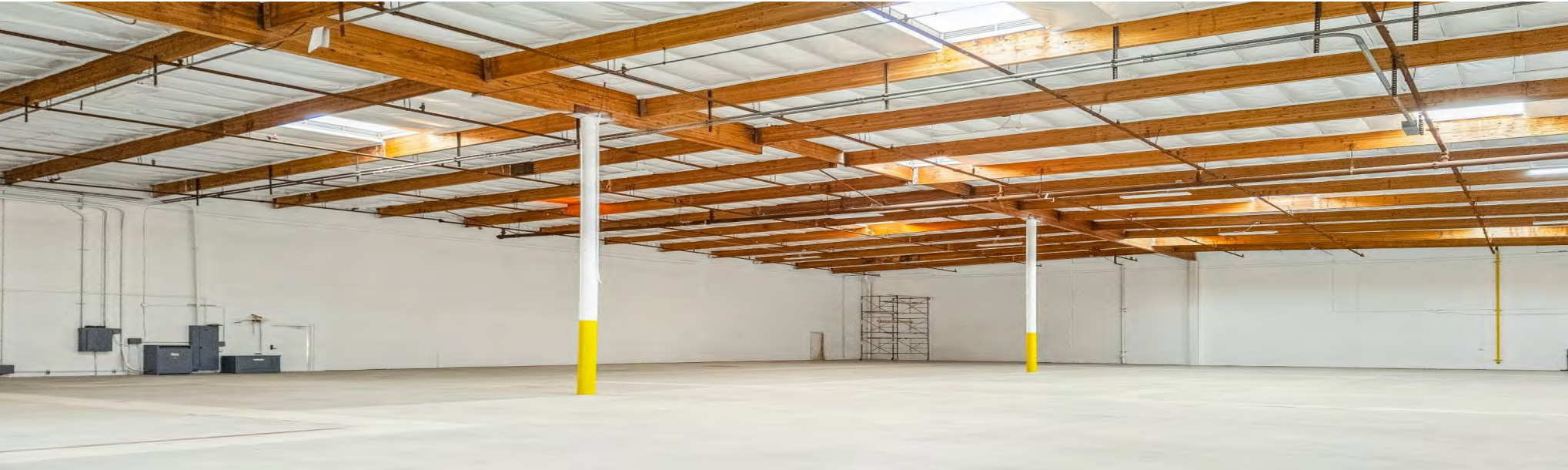


Camarillo
Cider House
CrossFit
Code 4

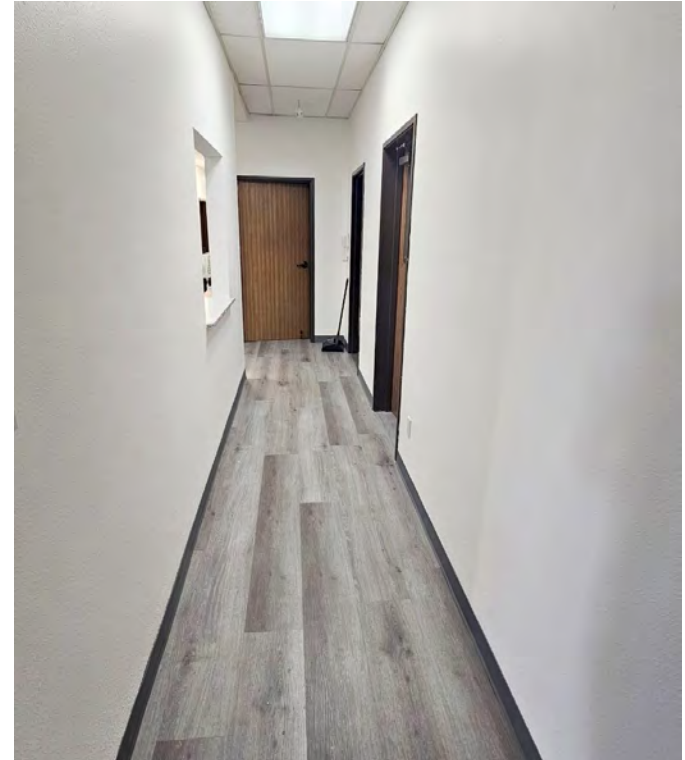
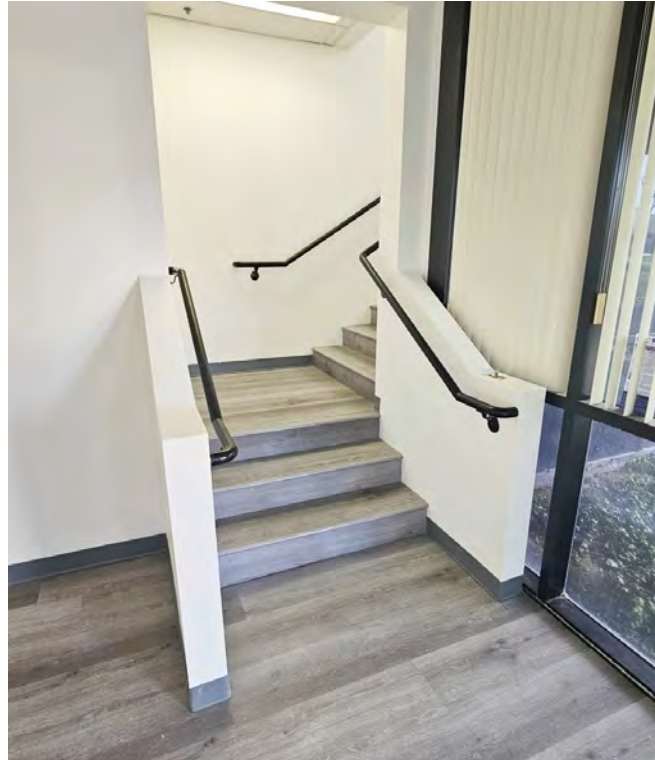
Back Patio
Cellars
Turnkey
Parlor

Subject

INTERIOR LAYOUT

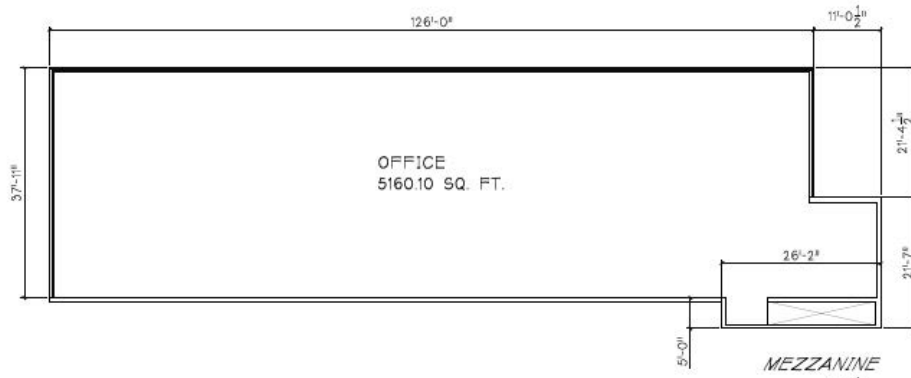
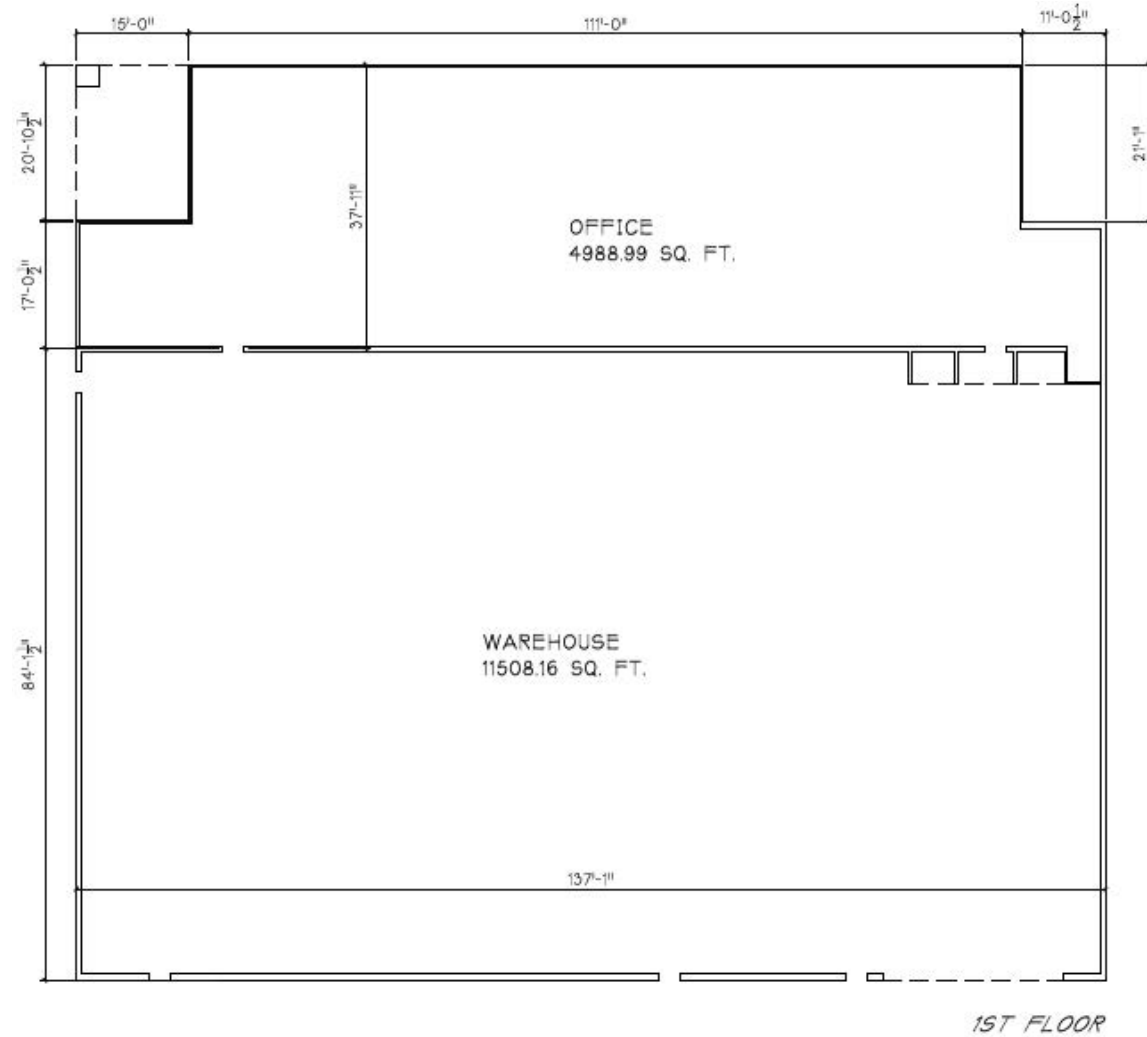


INTERIOR LAYOUT



FLOOR PLAN

850 FLYNN ROAD

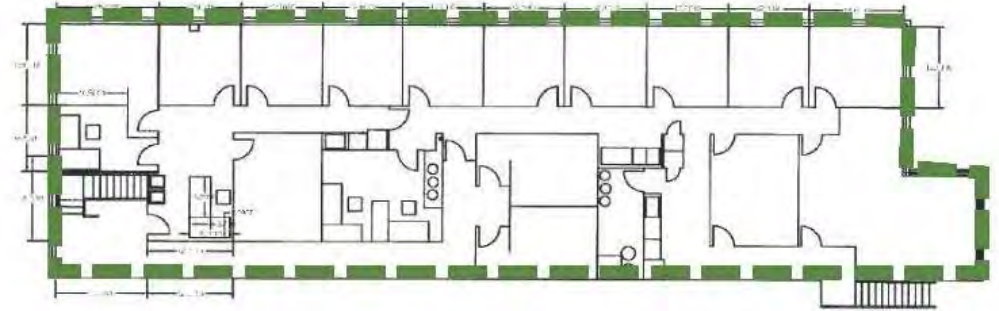
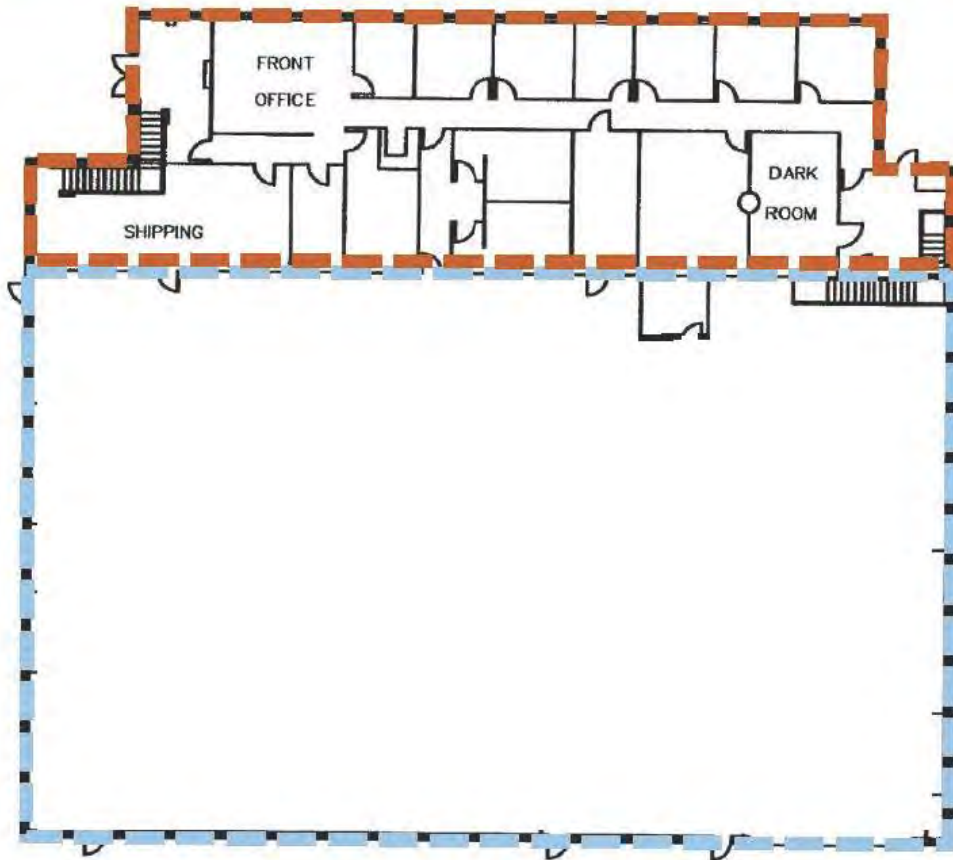


USE	SF	%	CEILING
Manufacturing	11,508	62%	24'-26'
Office	4,988	19%	9'-10'
2 nd Floor	5,160	19%	9'-10'
Total	21,657	100%	-

FLOOR PLAN

850 FLYNN ROAD

 Manufacturing  Office  Second Floor



PROPERTY LAYOUT

850 FLYNN ROAD

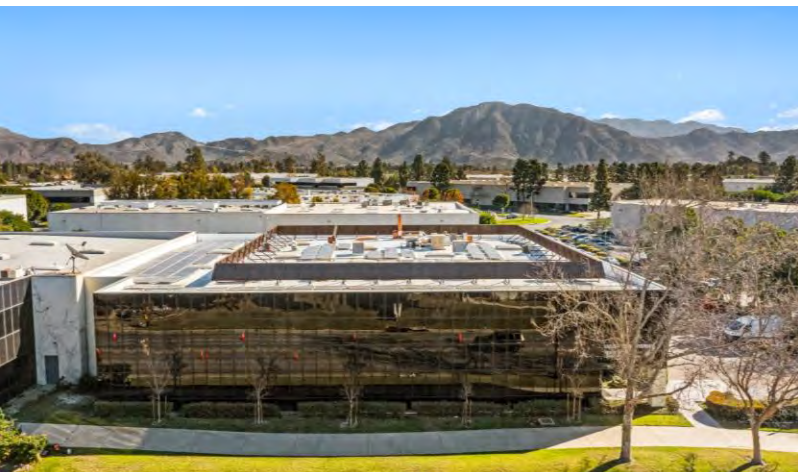


BUILDING SF
21,657

TOTAL OFFICE SF
10,149

MEZZ SF
5,160

PARKING
52



850 FLYNN ROAD



02

LOCATION OVERVIEW

Camarillo, CA

Camarillo is a thriving community of over 70,000 in the heart of Ventura County. Situated on the Oxnard Plain just nine miles from the Pacific Ocean, Camarillo offers an appealing mixture of rural and suburban lifestyles. With more than 300 sunny days annually and an average temperature in the low 70s, Camarillo's climate is hard to beat. Consistently ranked as one of the safest communities in Ventura County, Camarillo's location midway between Los Angeles and Santa Barbara is ideal for those who want to take advantage of the region's amenities while living in an affordable, prospering community

POPULATION

70,622

MEDIAN HH
INCOME

\$105,141

MEDIAN HOME
VALUE

\$713,900

Dedicated to preserving Camarillo's historic heritage as well as its natural beauty, the City Council and City staff also know that strong, healthy economic development is essential to sustaining Camarillo's quality of life. City officials maintain positive relations in the community by ensuring that equal attention is given to both residential and business concerns.



Location Highlights

Camarillo, CA is a thriving, family and business friendly community with exciting opportunities for growth. Located in Ventura County and just an hour north of Los Angeles.

- **Camarillo's unique blend of rural and suburban qualities is reflected in its prominent industries, which range the gamut between agriculture and aerospace and most everything in between.**
- **In the city's booming business districts, you'll find leading-edge biotech firms sharing industrial plots with high-tech manufacturing operations and software companies.**
- **Restaurants and retail commerce flourish across a multitude of attractive shopping plazas. The city has 150 premium outlet store**
- **Safe neighborhoods, 52 weeks of great weather, terrific public schools, close to the beach. From a charming downtown to a bustling outlet mall, Camarillo offers more of the Southern California good life.**

Strategic Advantages

- Safe, well-maintained city
- Fiscally sound with a business-friendly City Council and administration
- Low business license fees
- Low sales tax - 7.25%
- Access to key transportation
- Located between Santa Barbara and Los Angeles, giving access to a broad range of available workforce
- Robust business support ecosystem
- Camarillo is adjacent to the 101 freeway, which connects with nearly all Southern California routes
- Metrolink has a rail station in Camarillo
- Camarillo Airport is ideal for executive travel
- Oxnard Airport is a good choice for cargo travel
- Close proximity to the Port of Hueneme (14 miles)



AREA ECONOMY

70K
POPULATION

43,300
CIVILIAN LABOR FORCE

\$102K
MED HH INCOME

94.4%
HIGH SCHOOL GRADS

30+
COLLEGES WITHIN 40M

43.23%
BACHELORS DEGREE+

TOP REGIONAL EMPLOYERS

Pleasant Valley School District 729

St. John's Hospital 611

Meissner Filtration 510

Hi-Temp Insulation 463



Major Industries

Manufacturing

With plenty of industrial real estate and a highly educated, growing workforce, Camarillo is an ideal location for both design and production.

Agricultural Technology

As the country's most productive agricultural region, California is the obvious place to lay down roots and tap into the AgriTech boom. And Camarillo—with its longstanding agricultural heritage and abundance of fresh strawberries, mangoes, tomatoes, and more—is the perfect proving ground for emerging tech.

Life Science

Camarillo is ideally located in the center of a robust talent pool, being able to recruit both manufacturing talent and research and management expertise from the greater Los Angeles region.

Healthcare Services

With a growing population, a median household income over \$100,000, and a median age of 40, Camarillo is an attractive destination to start or relocate your healthcare business. 2% of Camarillo residents over 25 hold a Bachelor's degree or higher

Facing West

850 FLYNN ROAD



Pleasant Valley School District

Subject

Flynn Road



850 FLYNN ROAD

CAMARILLO, CA 93012

RON FEDER

PRESIDENT

(818) 222-0404

RFEDER@RJFEDER.COM

DRE # 00983855

JESSICA CHAMBERLAIN

COMMERCIAL ASSOCIATE

(818) 222-0404

JESSICA@RJFEDER.COM

DRE # 01898574



FEDER & ASSOCIATES
COMMERCIAL REAL ESTATE

