

Commercial and Medical offices

1630 W Prosper Trl , Prosper Tx

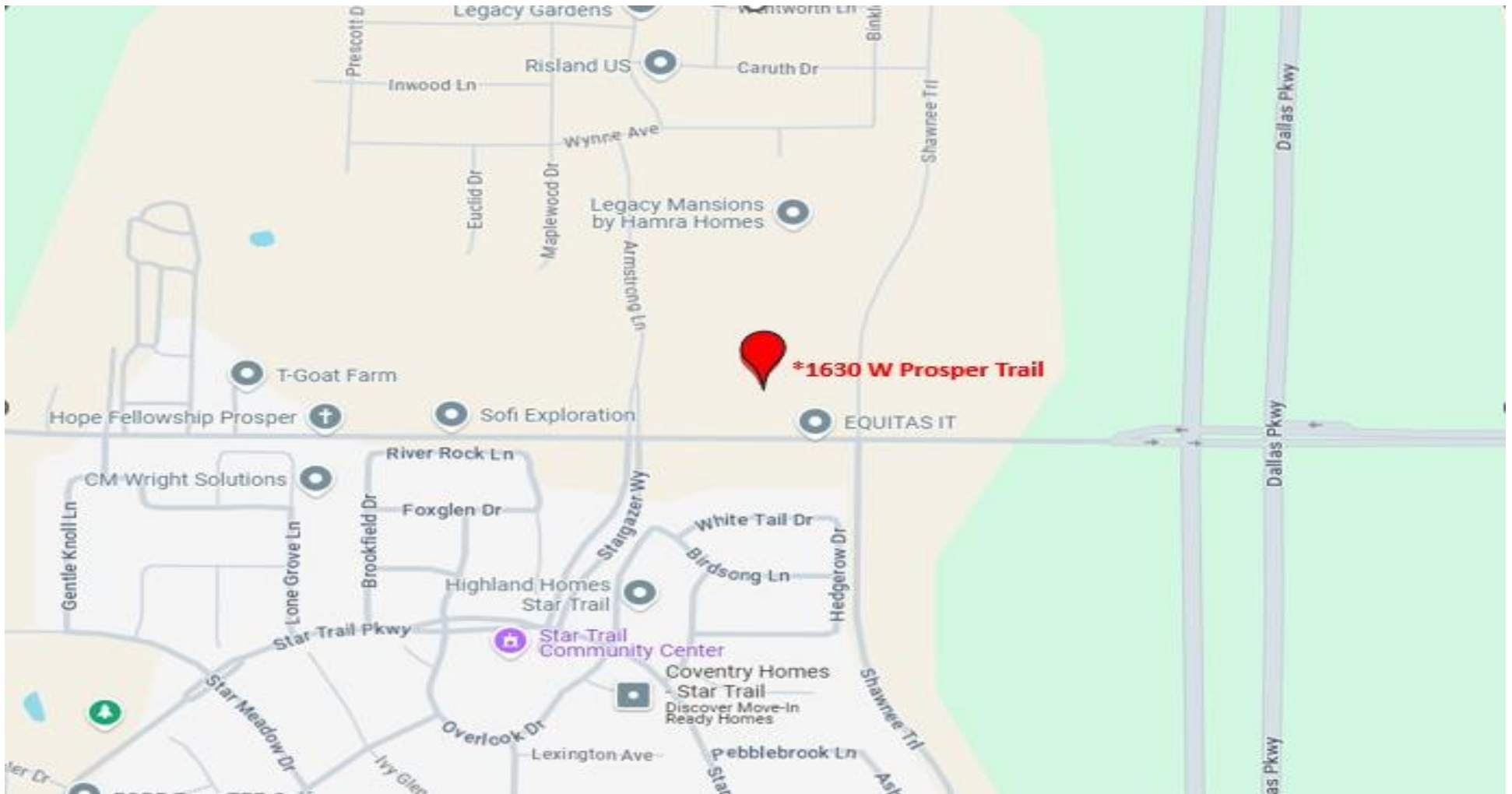


ZENAPPY REALTY
8992 PRESTON RD #110 - 404
FRISCO TX 75035

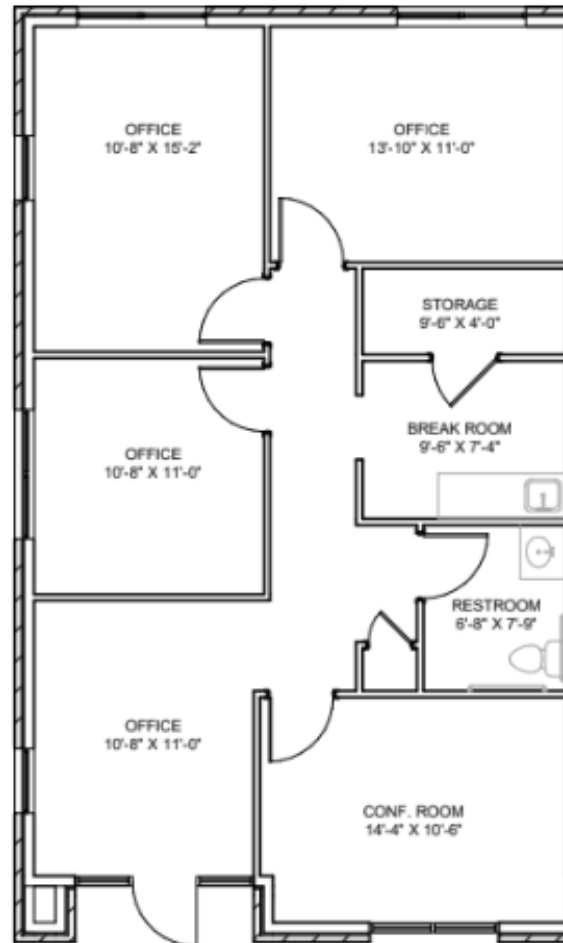


Shashi Kaligotla
(214) 430-2895
commercial@zenappy.com

Location



Floor Plan



1) TYPICAL FLOOR PLAN - 1,187 SF
SCALE: 1/8" = 1'-0"

Units Listing

1630 W Prosper Trl, Prosper, TX		
<u>Unit</u>	<u>Sqft</u>	<u>Price</u>
#310	1167	\$26 PSF + NNN
#920	1167	\$30 PSF + NNN
#1310	1167	\$28 PSF + NNN

Details and Pricing

- **Prime Location:** Situated on Prosper Trail near the prestigious Star Trail community
- **Excellent Connectivity:** Easy access to Dallas North Tollway, US Hwy 380, and Frisco's North Platinum Corridor
- **Fully finished and move-in-ready** for medical or professional office use
- **Thoughtfully Designed Layout:** 4 private offices, Spacious conference room and a Modern break area
- **Medical-Use Ready:** Sink plumbing in each room, Medical-grade wiring and Properly classified for medical occupancy
- **Convenient Parking:** Ample on-site parking for staff and visitors
- **Vibrant Surroundings:** Close to retail and dining at The Gates of Prosper and the PGA Headquarters



PICTURES

