

PREMIER OFFICE AND INDUSTRIAL SPACE FOR LEASE



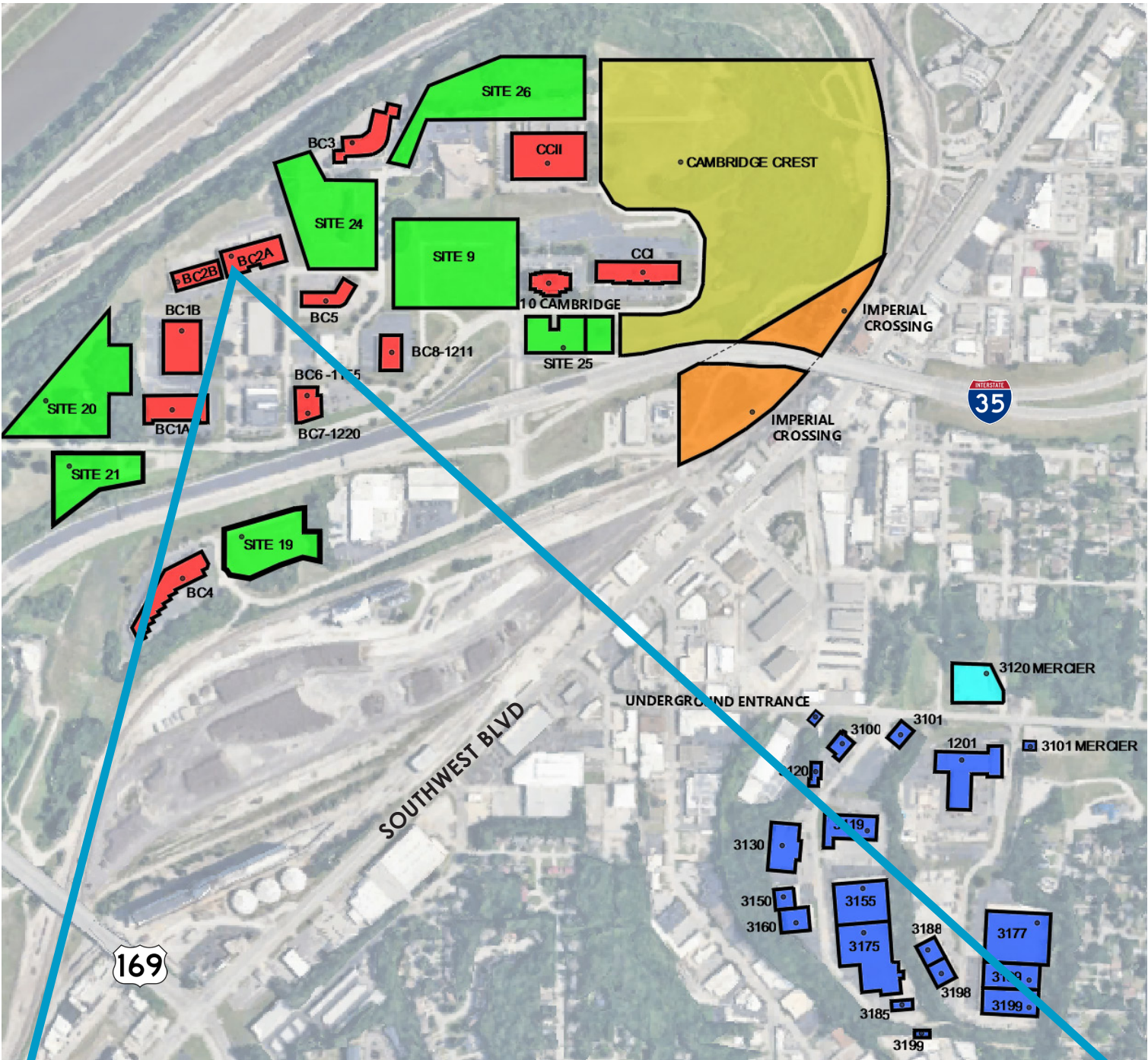
SPACE HIGHLIGHTS

- **2,604-11,506 SF Available**
- **Free, Convenient On-Site Parking**
- Positioned in a **well-maintained** and **secured** business park setting
- Accommodates large and small businesses
- Appropriate for light manufacturing, showroom and warehouse/flex applications
- **Google Fiber Available**
- **Clear visibility** and **instant accessibility** to I-35
- **Great location** central to the city's major thoroughfares; moments from the Plaza, Crown Center, Westport and Downtown

LEASING CONTACT

MOLLY CRAWFORD MUNNINGHOFF
P (816) 701-5013
mcrawford@copaken-brooks.com

LOCATION



106-110 ABBIE AVENUE

BUSINESS CENTER 2A

Total SF Available 11,506 SF

Office SF 6,429 SF

Warehouse SF 5,077 SF

Dock High Doors 3 (8' x 10')

Clear Height 16'

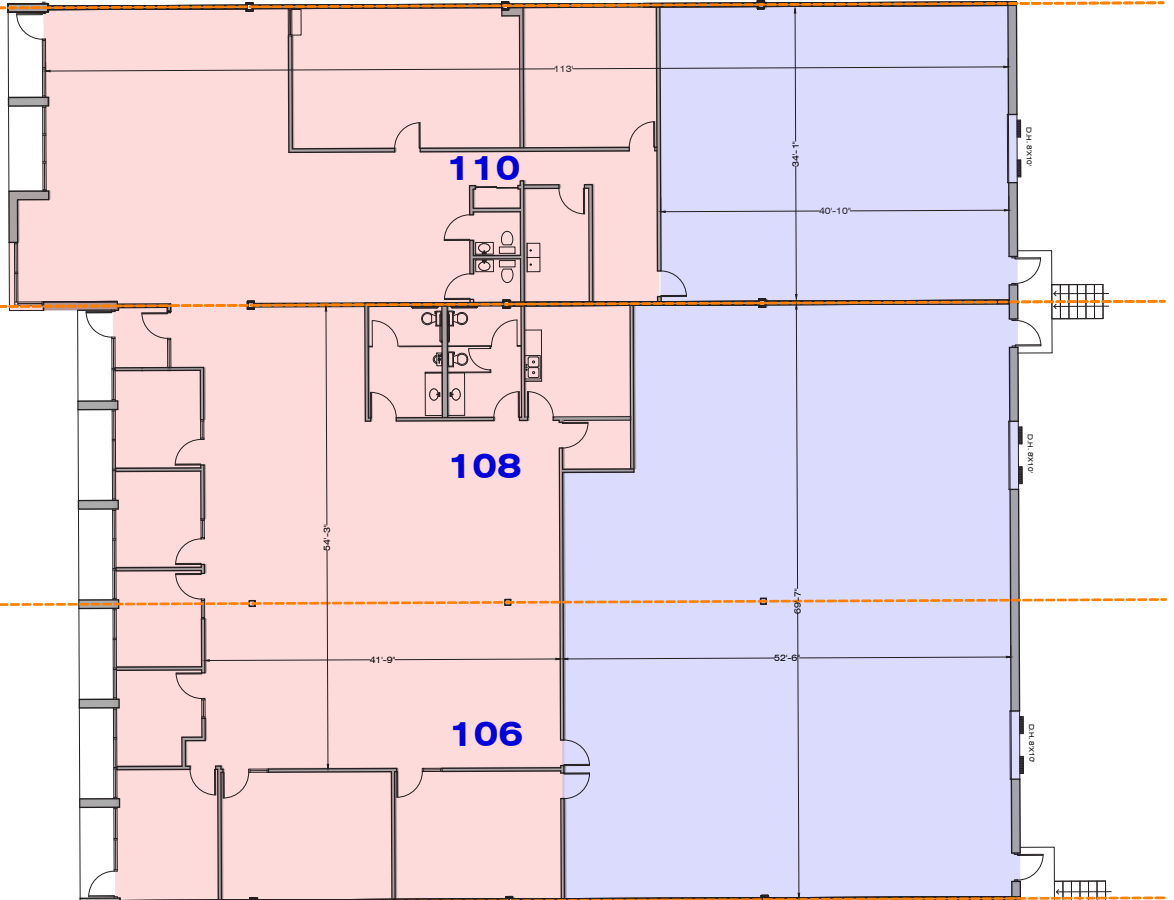
Notes Highway Visibility
Google Fiber Available



SUITE 110 = 4,062 SF

SUITE 108 = 3,792 SF

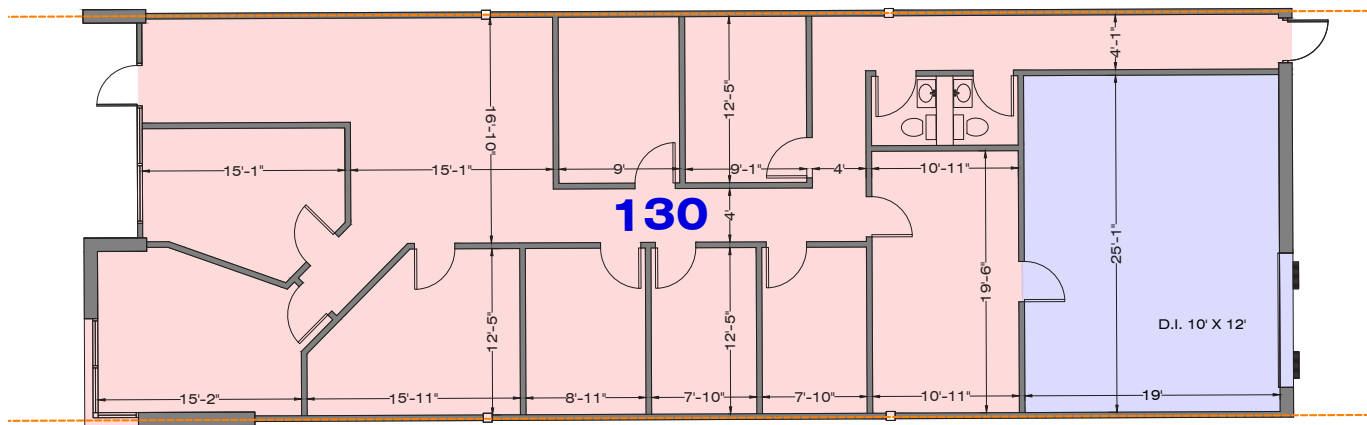
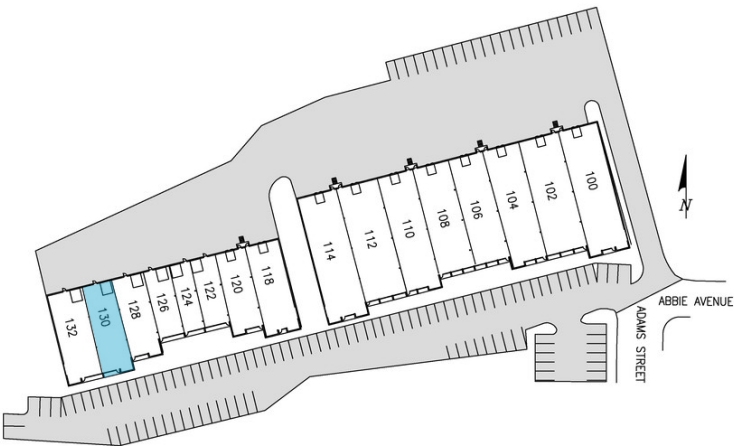
SUITE 106 = 3,652 SF



130 ABBIE AVENUE

BUSINESS CENTER 2B

Total SF Available	2,640 SF
Office SF	2,129 SF
Warehouse SF	511 SF
Drive-In Doors	1 (10' x 12')
Clear Height	16'
Notes	Highway Visibility Google Fiber Available





PREMIER OFFICE AND INDUSTRIAL SPACE FOR LEASE



LEASING CONTACT

MOLLY CRAWFORD MUNNINGHOFF

P (816) 701-5013

mcrawford@copaken-brooks.com

All information furnished regarding property for sale or lease is from sources deemed reliable, but no warranty or representation is made as to the accuracy thereof and the same is subject to errors, omissions, changes of prices, rental or other conditions, prior sale or lease, or withdrawal without notice.