

OFFICE BUILDING FOR LEASE

Crescent Commons

165 Main Street,
Cortland, NY 13045

OFFERING MEMORANDUM



JEFFREY GUIDA

Licensed Associate Real Estate Broker
315.727.9917
jguida@yaman.comm

ASHLEY WARFIELD

Licensed Real Estate Salesperson
607.745.8531
awarfield@yaman.comm





TABLE OF CONTENTS

Office Building For Lease

TABLE OF CONTENTS

PROPERTY INFORMATION	3
PROPERTY SUMMARY	4
PROPERTY DESCRIPTION	5
ADDITIONAL PHOTOS	6
LOCATION INFORMATION	7
REGIONAL MAP	8
LOCATION MAP	9
AERIAL MAP	10
DEMOGRAPHICS	11
DEMOGRAPHICS MAP & REPORT	12
ADVISOR BIOS	13

CONFIDENTIALITY & DISCLAIMER

All materials and information received or derived from Yaman Commercial its directors, officers, agents, advisors, affiliates and/or any third party sources are provided without representation or warranty as to completeness, veracity, or accuracy, condition of the property, compliance or lack of compliance with applicable governmental requirements, developability or suitability, financial performance of the property, projected financial performance of the property for any party's intended use or any and all other matters.

Neither Yaman Commercial its directors, officers, agents, advisors, or affiliates makes any representation or warranty, express or implied, as to accuracy or completeness of the any materials or information provided, derived, or received. Materials and information from any source, whether written or verbal, that may be furnished for review are not a substitute for a party's active conduct of its own due diligence to determine these and other matters of significance to such party. Yaman Commercial will not investigate or verify any such matters or conduct due diligence for a party unless otherwise agreed in writing.

EACH PARTY SHALL CONDUCT ITS OWN INDEPENDENT INVESTIGATION AND DUE DILIGENCE.

Any party contemplating or under contract or in escrow for a transaction is urged to verify all information and to conduct their own inspections and investigations including through appropriate third party independent professionals selected by such party. All financial data should be verified by the party including by obtaining and reading applicable documents and reports and consulting appropriate independent professionals. Yaman Commercial makes no warranties and/or representations regarding the veracity, completeness, or relevance of any financial data or assumptions. Yaman Commercial does not serve as a financial advisor to any party regarding any proposed transaction. All data and assumptions regarding financial performance, including that used for financial modeling purposes, may differ from actual data or performance. Any estimates of market rents and/or projected rents that may be provided to a party do not necessarily mean that rents can be established at or increased to that level. Parties must evaluate any applicable contractual and governmental limitations as well as market conditions, vacancy factors and other issues in order to determine rents from or for the property.

Legal questions should be discussed by the party with an attorney. Tax questions should be discussed by the party with a certified public accountant or tax attorney. Title questions should be discussed by the party with a title officer or attorney. Questions regarding the condition of the property and whether the property complies with applicable governmental requirements should be discussed by the party with appropriate engineers, architects, contractors, other consultants and governmental agencies. All properties and services are marketed by Yaman Commercial in compliance with all applicable fair housing and equal opportunity laws.

SECTION 1

Property Information

165 Main Street,
Cortland, NY 13045



JEFFREY GUIDA

Licensed Associate Real Estate Broker
315.727.9917
jguida@yaman.comm

ASHLEY WARFIELD

Licensed Real Estate Salesperson
607.745.8531
awarfield@yaman.comm





PROPERTY SUMMARY

Office Building For Lease



PROPERTY DESCRIPTION

PREMIER commercial space available. Shared conference room included. Office, service, medical- many uses. Call today to schedule a private viewing!

PROPERTY HIGHLIGHTS

OFFERING SUMMARY

Lease Rate:	\$350.00 - 2,014.00 per month (Gross; MG; Negotiable)
Number of Units:	3
Available SF:	200 - 10,300 SF
Lot Size:	134,165 SF
Building Size:	148,480 SF

DEMOGRAPHICS	0.3 MILES	0.5 MILES	1 MILE
Total Households	690	1,673	4,785
Total Population	1,416	3,924	13,103
Average HH Income	\$65,141	\$74,173	\$83,513

JEFFREY GUIDA

Licensed Associate Real Estate Broker
315.727.9917
jguida@yaman.comm

ASHLEY WARFIELD

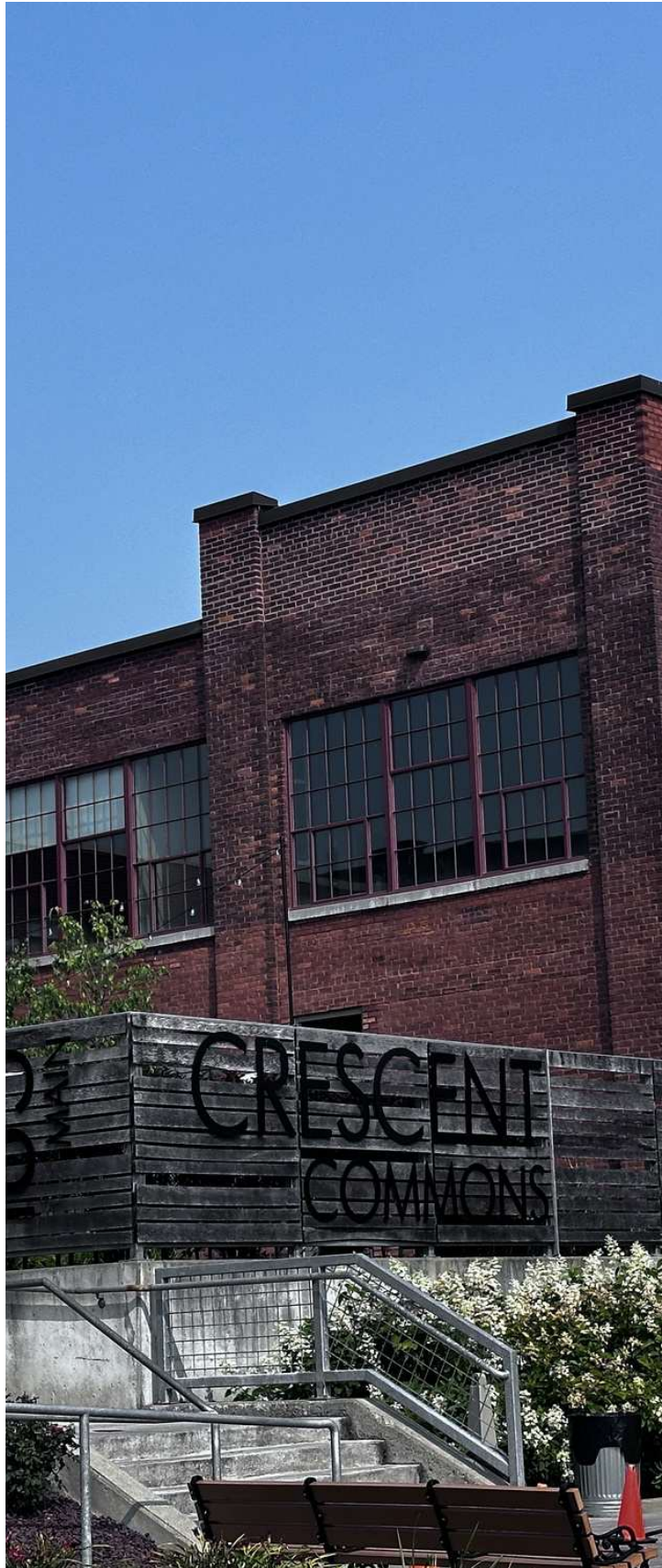
Licensed Real Estate Salesperson
607.745.8531
awarfield@yaman.comm





PROPERTY DESCRIPTION

Office Building For Lease



PROPERTY DESCRIPTION

PREMIER commercial space available. Shared conference room included. Office, service, medical- many uses. Call today to schedule a private viewing!

LOCATION DESCRIPTION

It's nestled in central Cortland within walking distance to local schools. Nearby neighborhoods include Munsons Corners and Cortland West.

JEFFREY GUIDA

Licensed Associate Real Estate Broker
315.727.9917
jguida@yaman.comm

ASHLEY WARFIELD

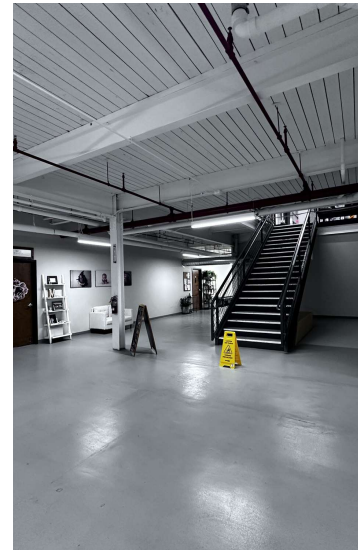
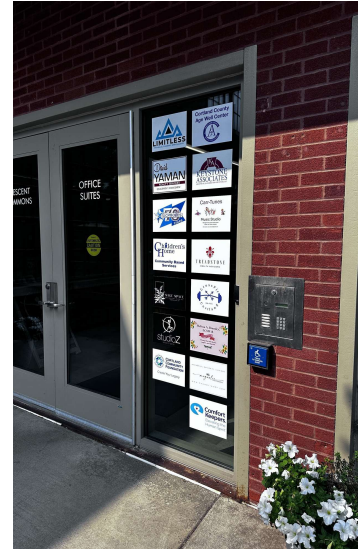
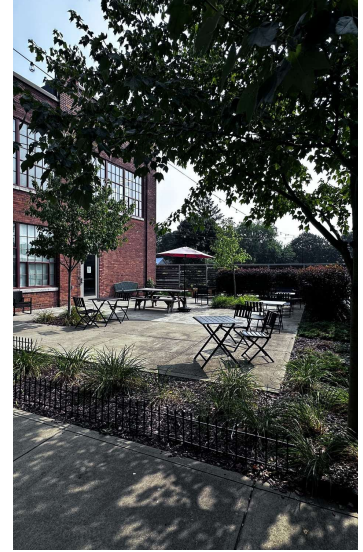
Licensed Real Estate Salesperson
607.745.8531
awarfield@yaman.comm





ADDITIONAL PHOTOS

Office Building For Lease



JEFFREY GUIDA
Licensed Associate Real Estate Broker
315.727.9917
jguida@yaman.comm

ASHLEY WARFIELD
Licensed Real Estate Salesperson
607.745.8531
awarfield@yaman.comm



Location Information

165 Main Street,
Cortland, NY 13045



JEFFREY GUIDA

Licensed Associate Real Estate Broker
315.727.9917
jguida@yaman.comm

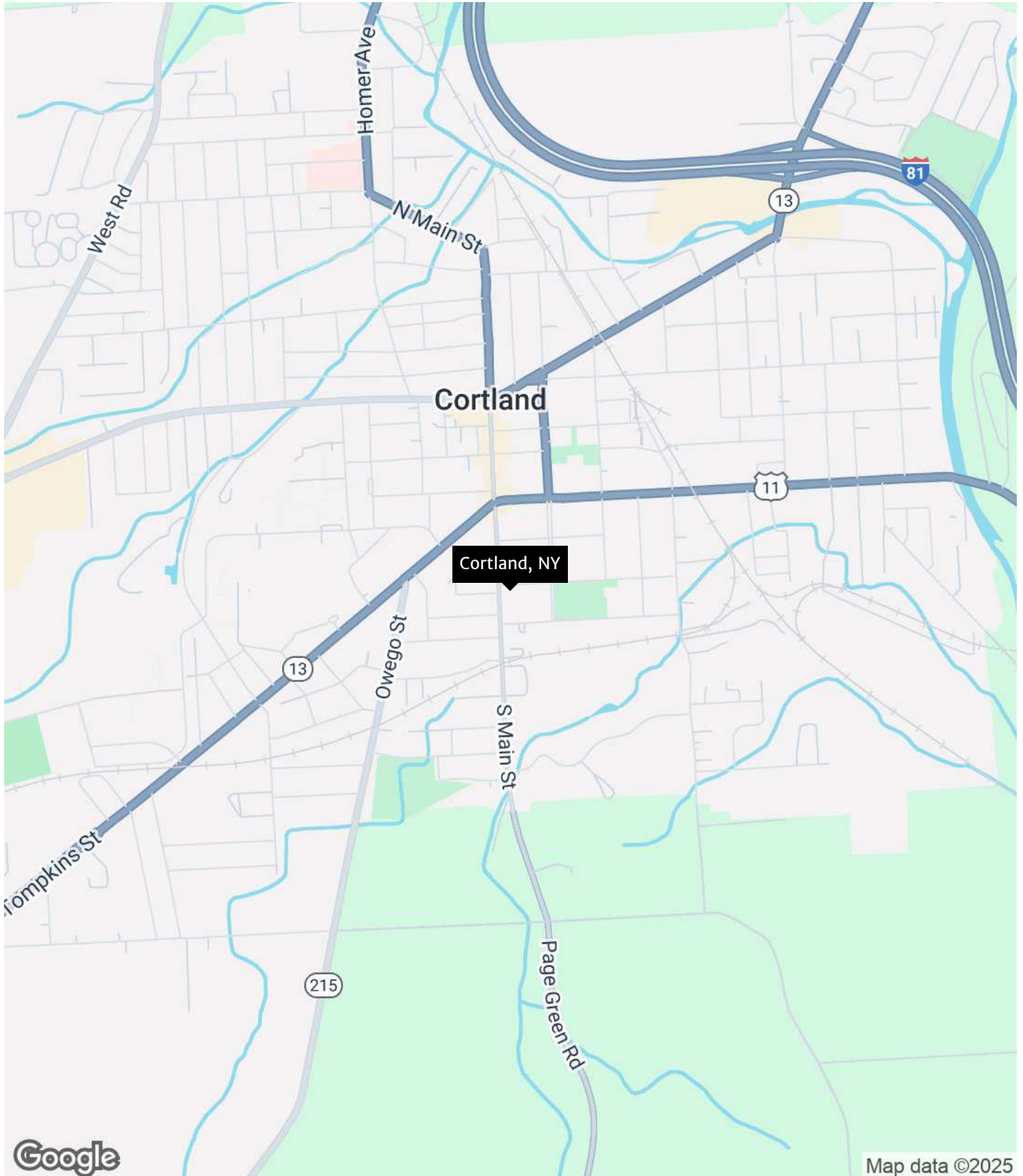
ASHLEY WARFIELD

Licensed Real Estate Salesperson
607.745.8531
awarfield@yaman.comm



REGIONAL MAP

Office Building For Lease



Google

Map data ©2025

JEFFREY GUIDA

Licensed Associate Real Estate Broker
315.727.9917
jguida@yaman.comm

ASHLEY WARFIELD

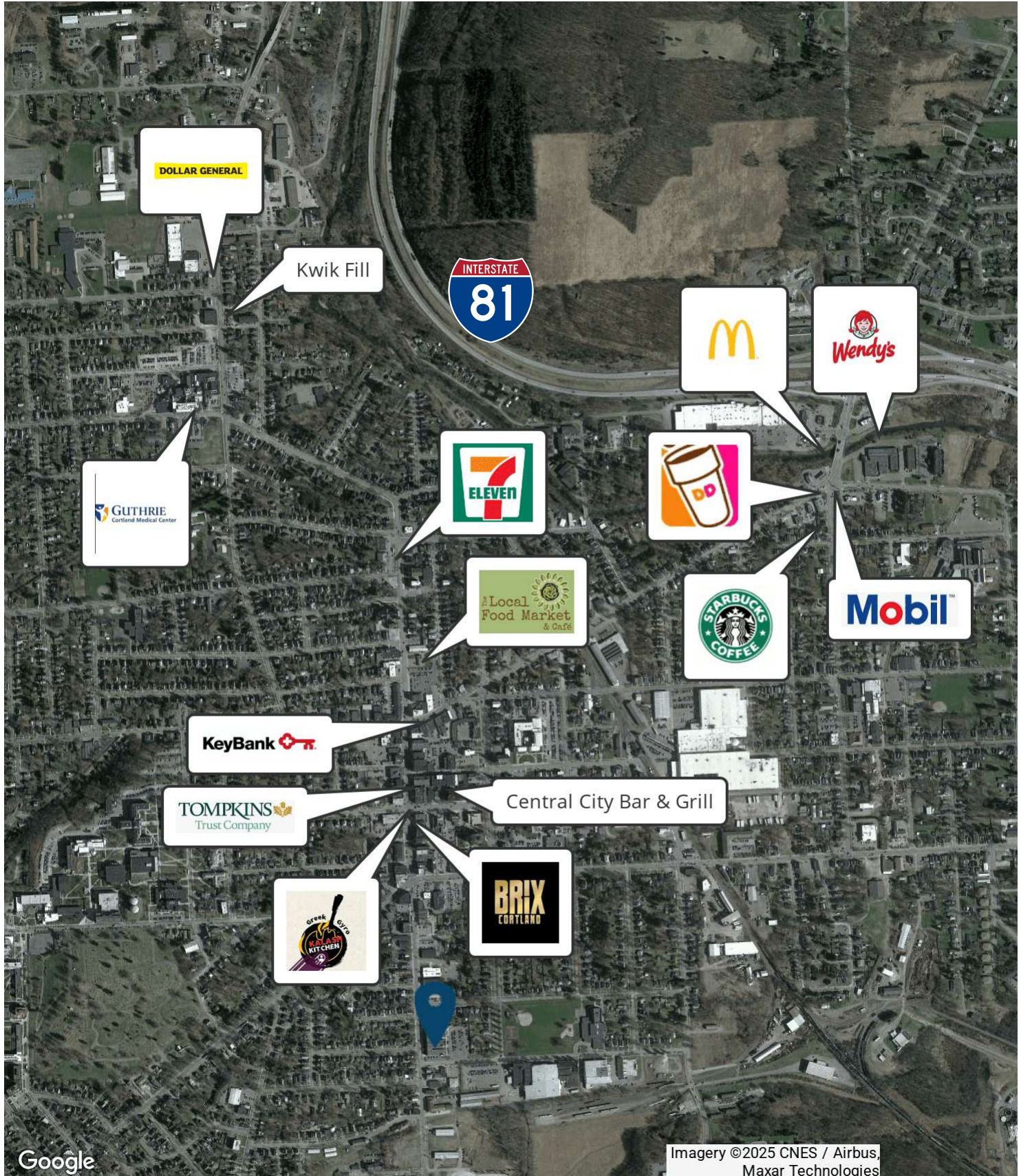
Licensed Real Estate Salesperson
607.745.8531
awarfield@yaman.comm



LOCATION MAP



Office Building For Lease



JEFFREY GUIDA
Licensed Associate Real Estate Broker
315.727.9917
jguida@yaman.comm

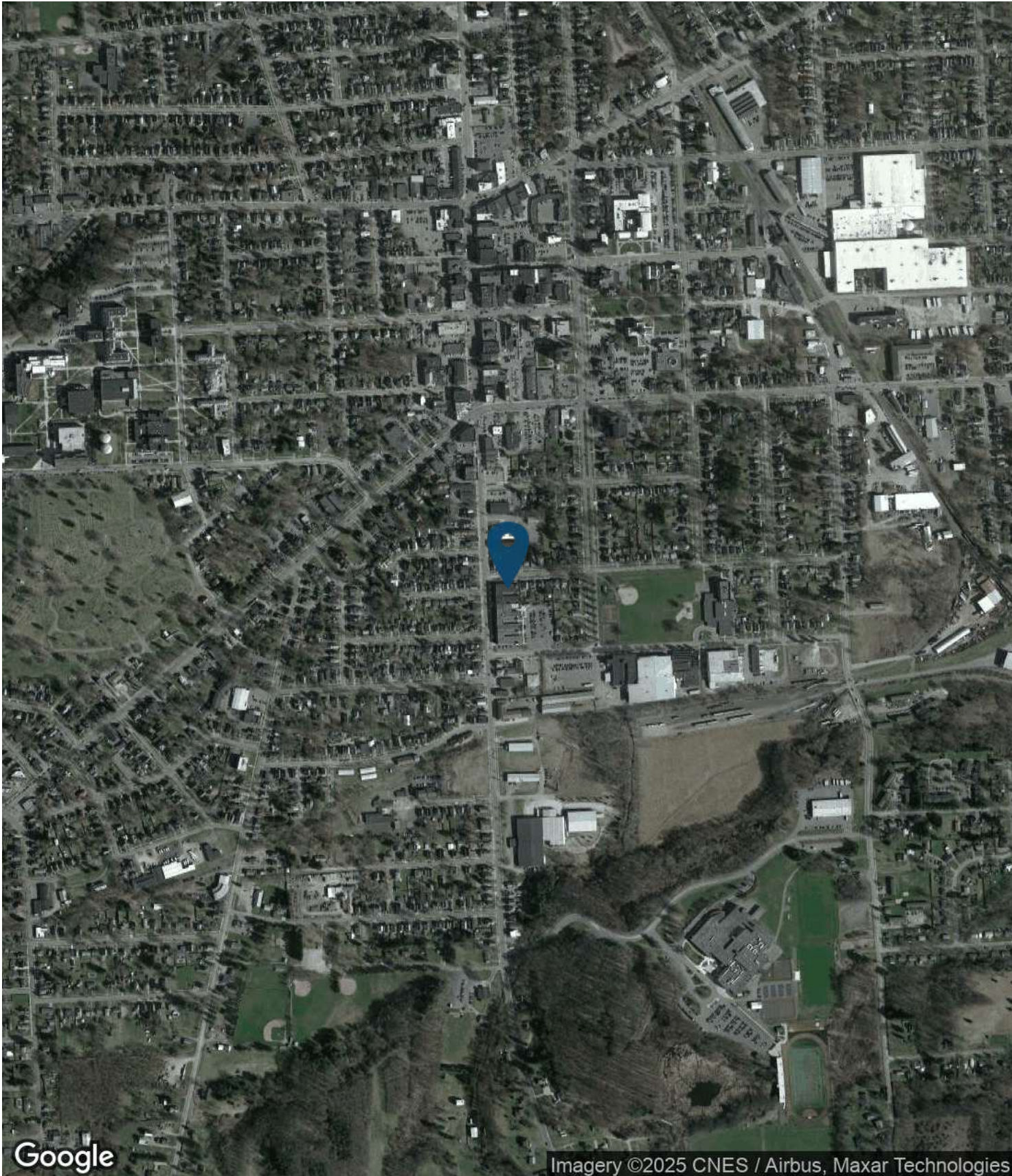
ASHLEY WARFIELD
Licensed Real Estate Salesperson
607.745.8531
awarfield@yaman.comm





AERIAL MAP

Office Building For Lease



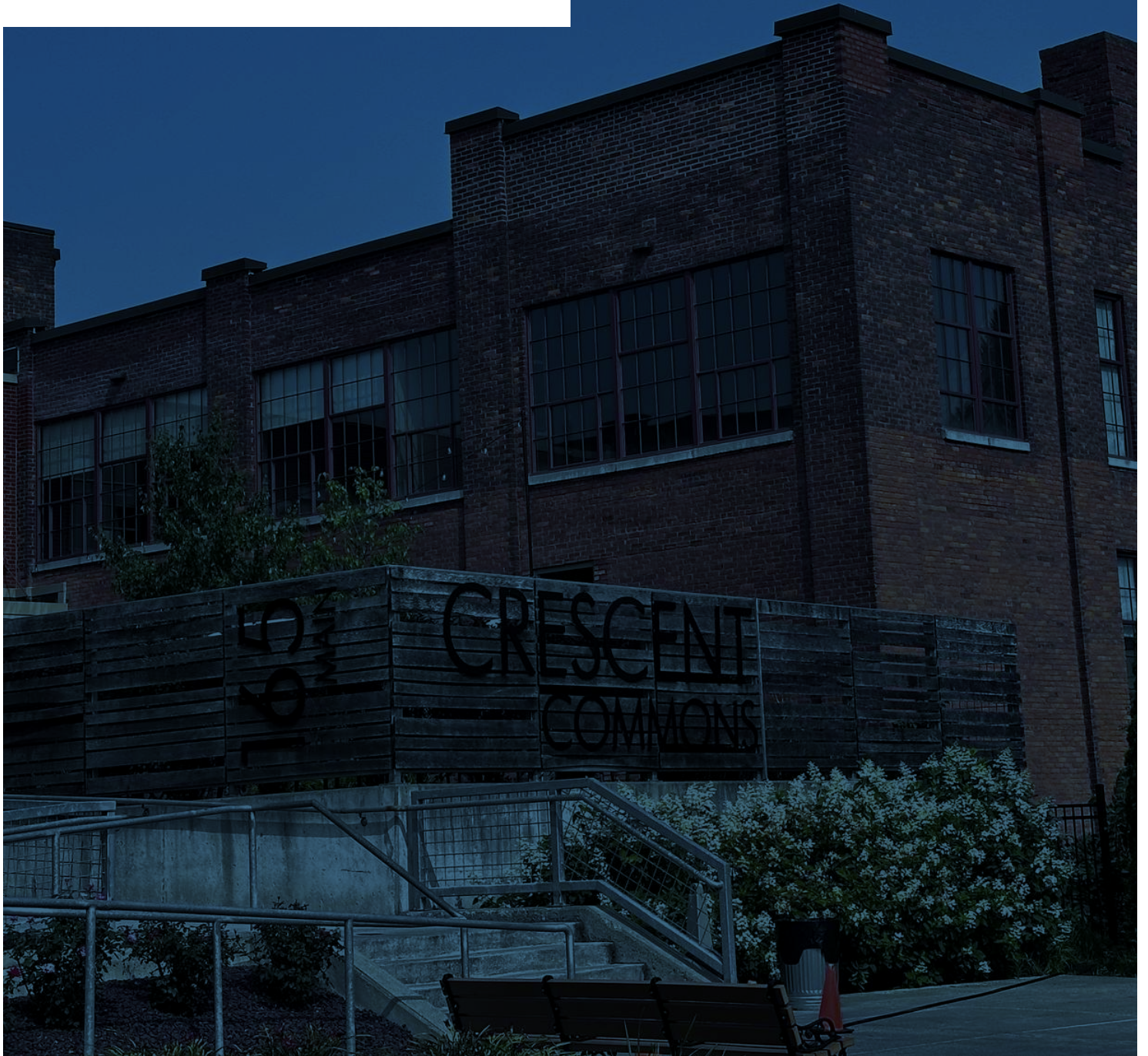
JEFFREY GUIDA
Licensed Associate Real Estate Broker
315.727.9917
jguida@yaman.comm

ASHLEY WARFIELD
Licensed Real Estate Salesperson
607.745.8531
awarfield@yaman.comm



Demographics

165 Main Street,
Cortland, NY 13045



JEFFREY GUIDA
Licensed Associate Real Estate Broker
315.727.9917
jguida@yaman.comm

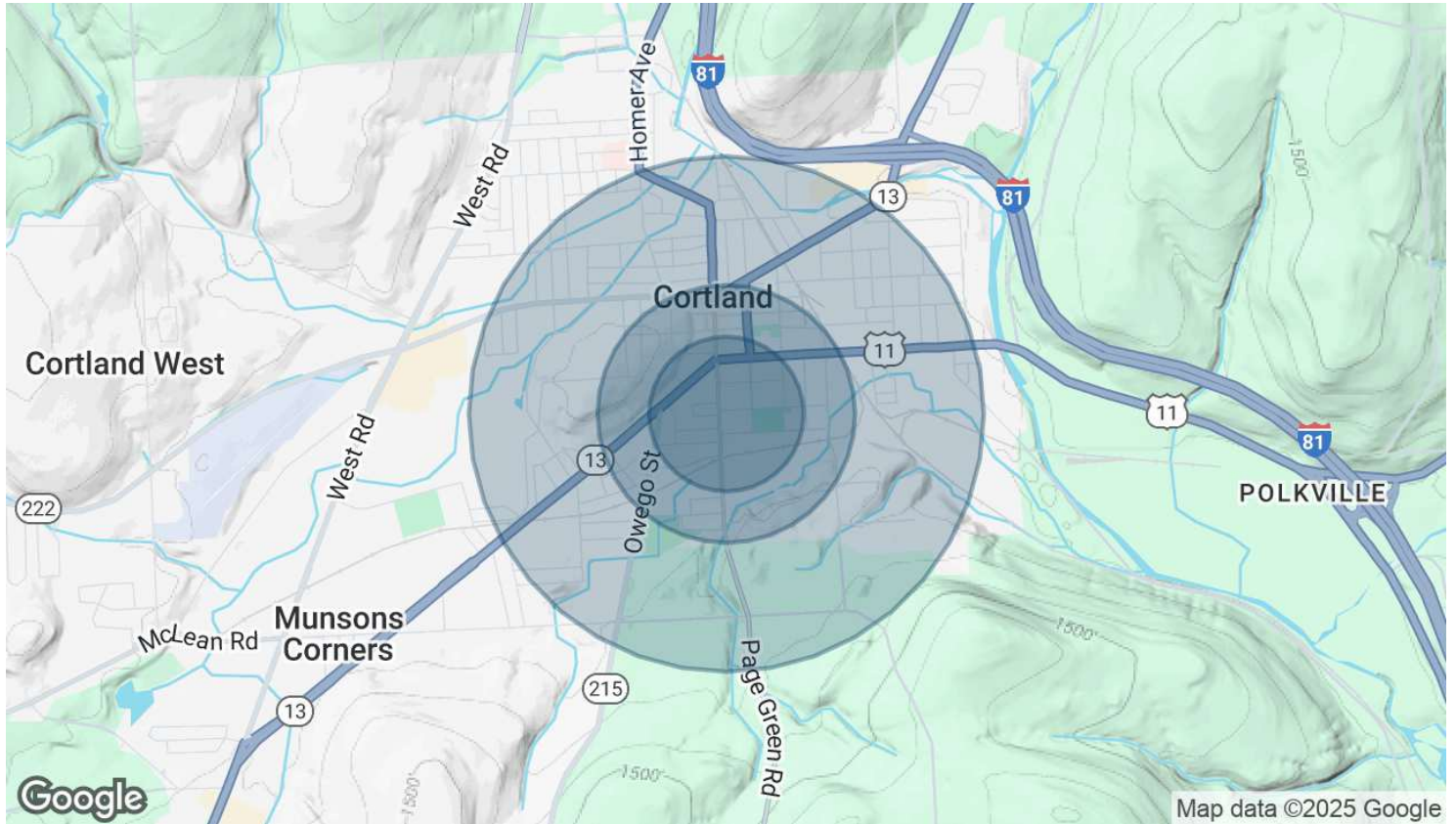
ASHLEY WARFIELD
Licensed Real Estate Salesperson
607.745.8531
awarfield@yaman.comm





DEMOGRAPHICS MAP & REPORT

Office Building For Lease



POPULATION	0.3 MILES	0.5 MILES	1 MILE
Total Population	1,416	3,924	13,103
Average Age	37	36	36
Average Age (Male)	36	35	35
Average Age (Female)	39	36	37

HOUSEHOLDS & INCOME	0.3 MILES	0.5 MILES	1 MILE
Total Households	690	1,673	4,785
# of Persons per HH	2.1	2.3	2.7
Average HH Income	\$65,141	\$74,173	\$83,513
Average House Value	\$168,388	\$172,846	\$179,031

Demographics data derived from AlphaMap

JEFFREY GUIDA
 Licensed Associate Real Estate Broker
 315.727.9917
 jguida@yaman.comm

ASHLEY WARFIELD
 Licensed Real Estate Salesperson
 607.745.8531
 awarfield@yaman.comm



Advisor Bios

165 Main Street,
Cortland, NY 13045



JEFFREY GUIDA

Licensed Associate Real Estate Broker
315.727.9917
jguida@yaman.comm

ASHLEY WARFIELD

Licensed Real Estate Salesperson
607.745.8531
awarfield@yaman.comm



JEFFREY "JEFF" GUIDA

Licensed Associate Real Estate Broker

jguida@@yaman.com
Direct: 315.727.9917

I am originally from Liverpool, NY and attended college at SUNY Brockport where I met my wife Lisa. Lisa accepted a position at Ithaca College which brought us to Cortland, NY where we've decided to settle and raise our family. We are blessed with three beautiful children who keep us active and involved with the community. I have been practicing real estate since 2010 and I truly love what I do!

What I enjoy the most about selling real estate is meeting new people and building relationships. This business, like many, comes with its share of challenges, but with every challenge there is a solution. My interpersonal skills, patience, and strong aptitude for this business allow me to best serve my customers and clients. I have a consistent record as a multi-million dollar producer, which means I've had the opportunity to help many individuals and families buy and sell real estate. I service the Central New York area with a focus in Cortland, Syracuse, and Ithaca.

The CNY area is truly beautiful and I feel grateful to have grown up here. When I am not selling real estate, I enjoy gardening, watching movies and spending time with my family.

Yaman Commercial
185 Clinton Avenue
Cortland, NY 13045
607.218.6221



ASHLEY WARFIELD

Licensed Real Estate Salesperson

awarfield@yaman.com

Direct: 607.745.8531

As a lifelong resident of Cortland & the Finger Lakes area, Ashley Warfield has dedicated her career to improving the market of CNY & creating an environment you want to call home.

An avid gardener & camper, she has raised six beautiful children and coached numerous sports. Through these interactions, she has mastered communication, listening, and organization.

Her real estate career has flourished, placing her in the Million Dollar Circle Award Winner group from the very beginning. Her enthusiasm, time management skills, and passion for the field make this more than a job – it's truly a way of life.

Whether you're in the market to buy, sell, downsize, or build, trust that Ashley will assist you every step of the way.

Yaman Commercial
185 Clinton Avenue
Cortland, NY 13045
607.218.6221

ASHLEY WARFIELD
Licensed Real Estate Salesperson
607.745.8531
awarfield@yaman.com