

**FOR  
SALE**

# OVIDO POTENTIAL COMMERCIAL OR TOWNHOME SITE NEAR SR 417

Slavia Rd, Oviedo, FL 32765

## AVERAGE DAILY TRAFFIC COUNTS (2022)

- 1 11,900 Slavia Rd
- 2 32,500 Red Bug Lake Rd
- 3 62,500 SR 417



## ABOUT THE PROPERTY

**SIZE** 7.68± acres

**PRICE** \$2,500,000

**ZONING** PD

**FLU** PD

**UTILITIES** Available

**ROAD FRONTAGE** 800'± on Slavia Rd

**PARCEL ID** 16-21-31-5CA-0000-067A

## DESCRIPTION

**Close to SR 417!** 7.68 acres located along Slavia Road in Oviedo Florida. This site is positioned just 1.1 miles west of the SR 417 / Red Bug Lake Road interchange. This property is part of the Stone Commercial Office Center Planned Development. Wetland mitigation credits have been purchased, providing 5± net acres for development.

**Call for more information today!**

**MAURY L. CARTER & ASSOCIATES, INC.**

Licensed Real Estate Brokers | [www.maurycarter.com](http://www.maurycarter.com) | 407-422-3144

Offering subject to errors, omission, prior sale or withdrawal without notice.

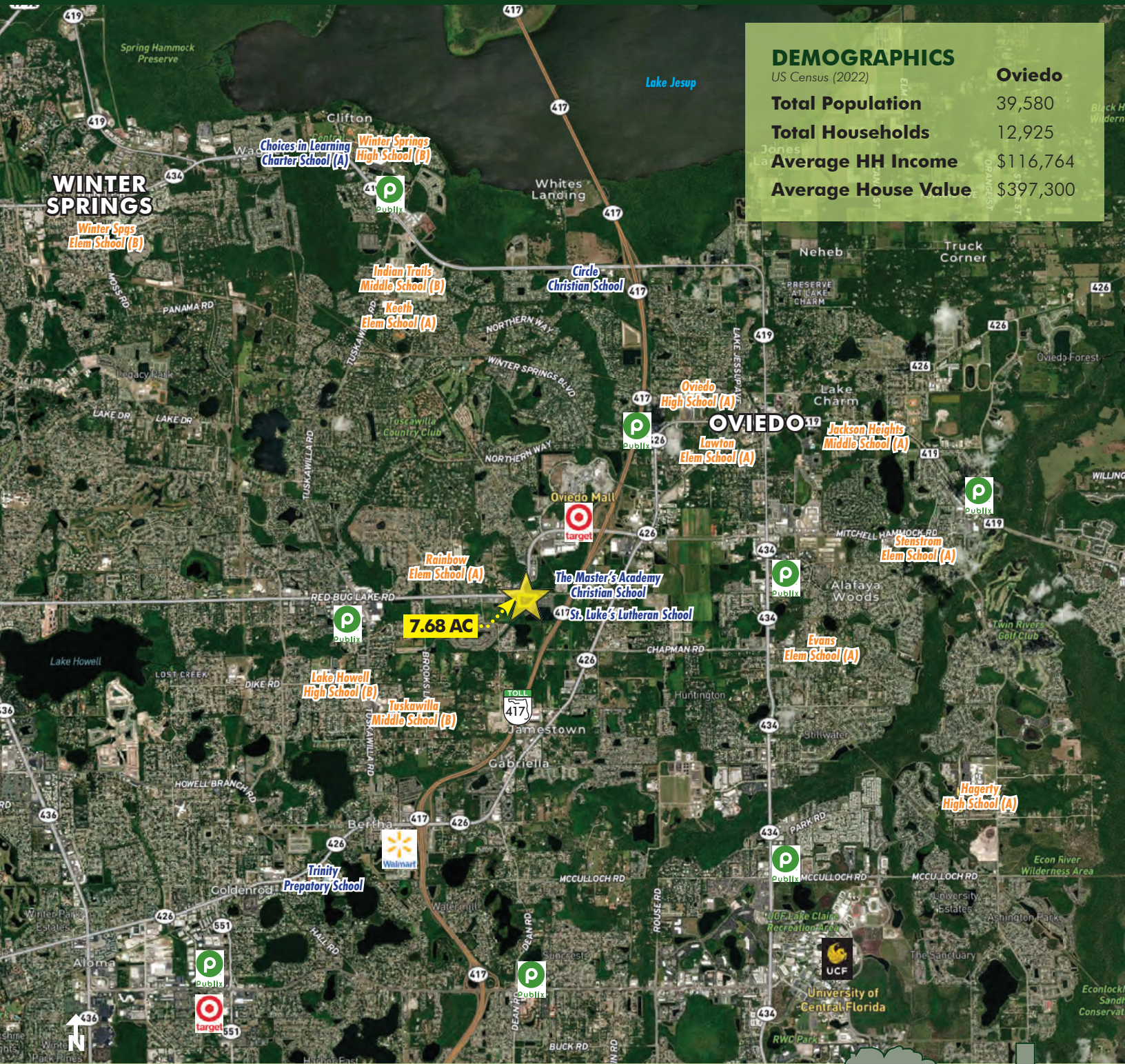




**FOR  
SALE**

# OVIEDO POTENTIAL COMMERCIAL OR TOWNHOME SITE NEAR SR 417

Slavia Rd, Oviedo, FL 32765



## DEMOGRAPHICS

US Census (2022)

	Oviedo
<b>Total Population</b>	39,580
<b>Total Households</b>	12,925
<b>Average HH Income</b>	\$116,764
<b>Average House Value</b>	\$397,300

## REGIONAL MAP

**MAURY L. CARTER & ASSOCIATES, INC.**

Licensed Real Estate Brokers | [www.maurycarter.com](http://www.maurycarter.com) | 407-422-3144

Offering subject to errors, omission, prior sale or withdrawal without notice.

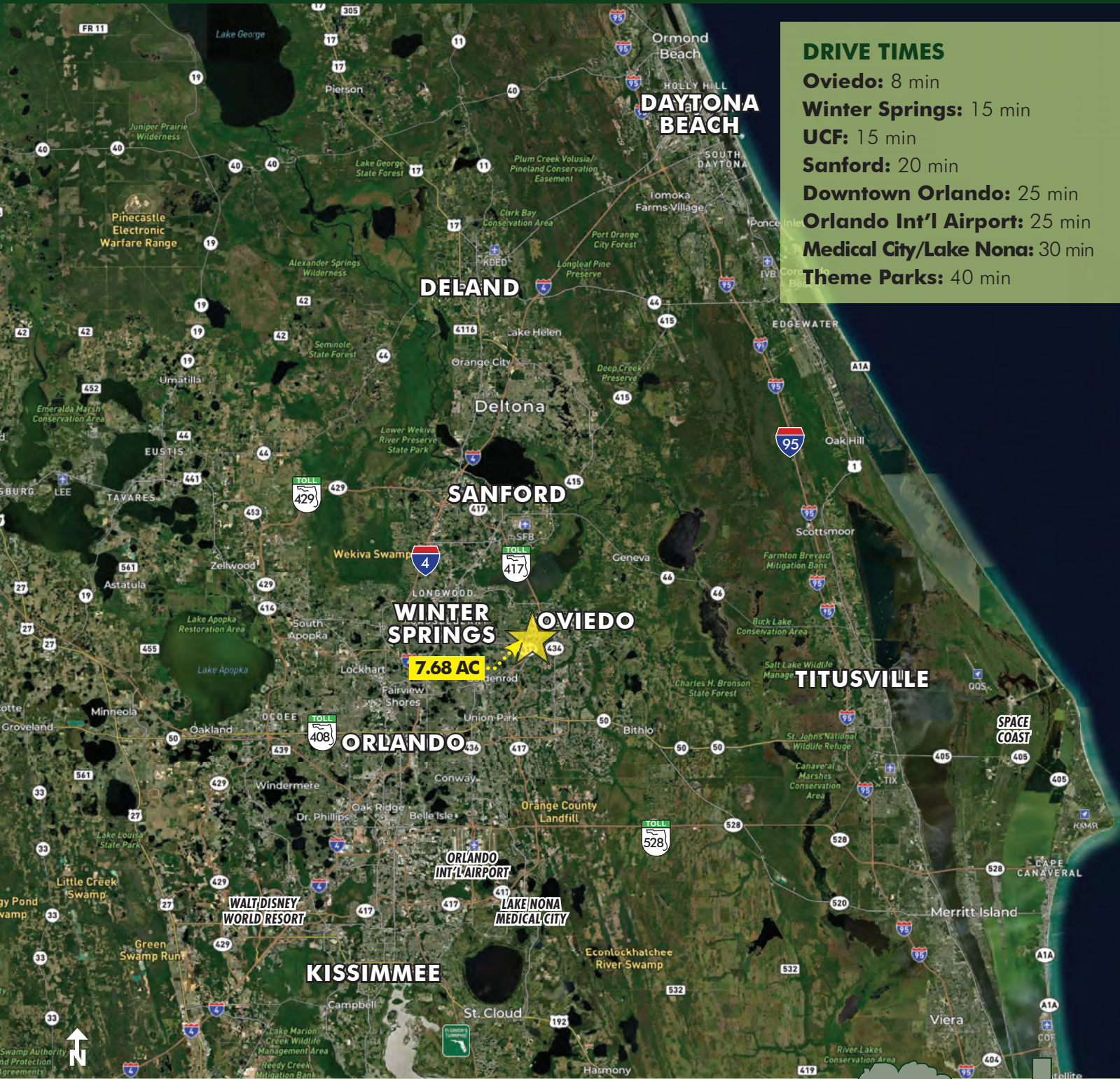




**FOR  
SALE**

# OVIEDO POTENTIAL COMMERCIAL OR TOWNHOME SITE NEAR SR 417

Slavia Rd, Oviedo, FL 32765



## LOCATION MAP

## MAURY L. CARTER & ASSOCIATES, INC.

Licensed Real Estate Brokers | [www.maurycarter.com](http://www.maurycarter.com) | 407-422-3144

Offering subject to errors, omission, prior sale or withdrawal without notice.

