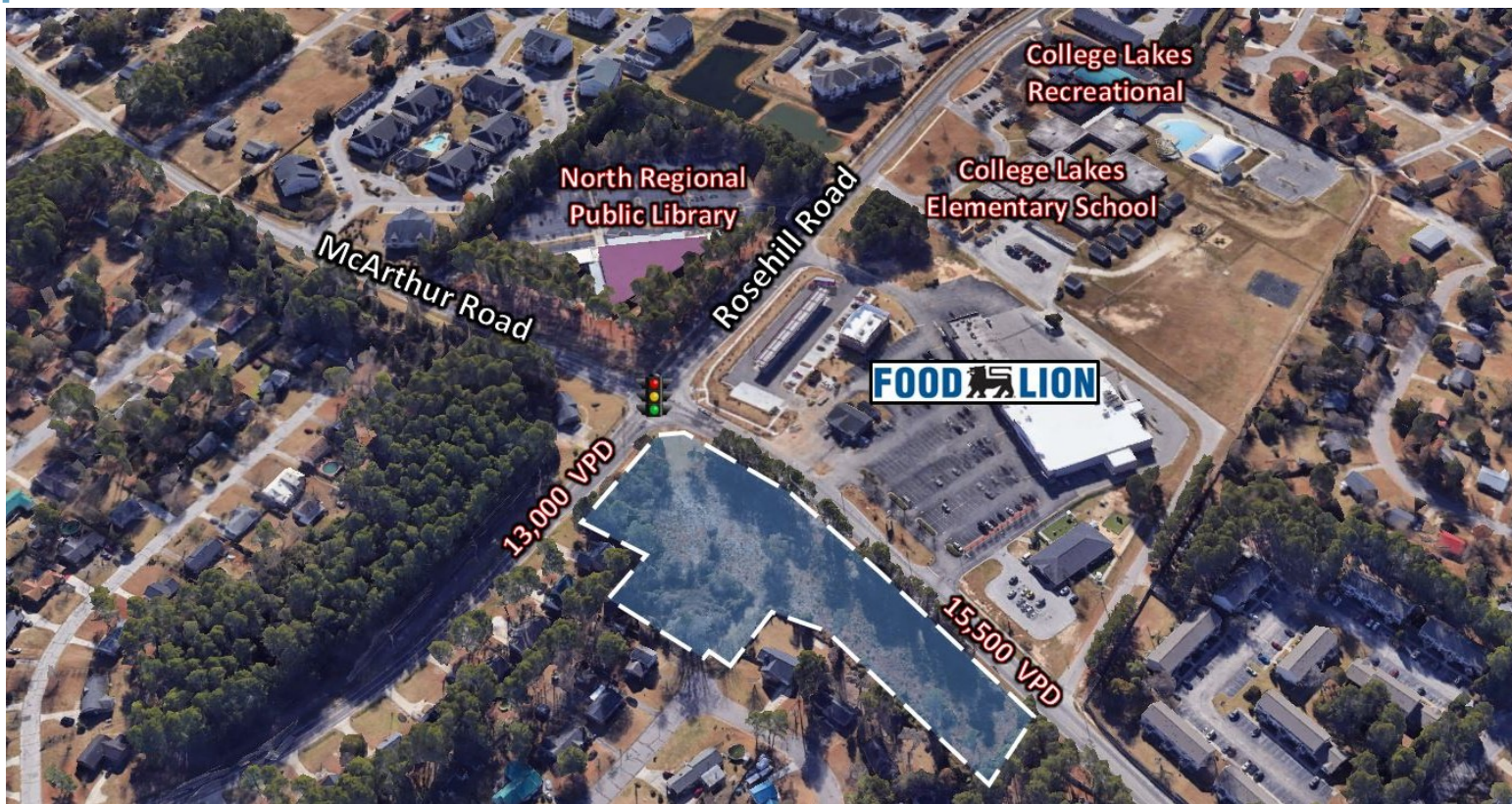


# FOR SALE

McArthur Rd & Stacy Weaver Dr  
Fayetteville, NC 28311



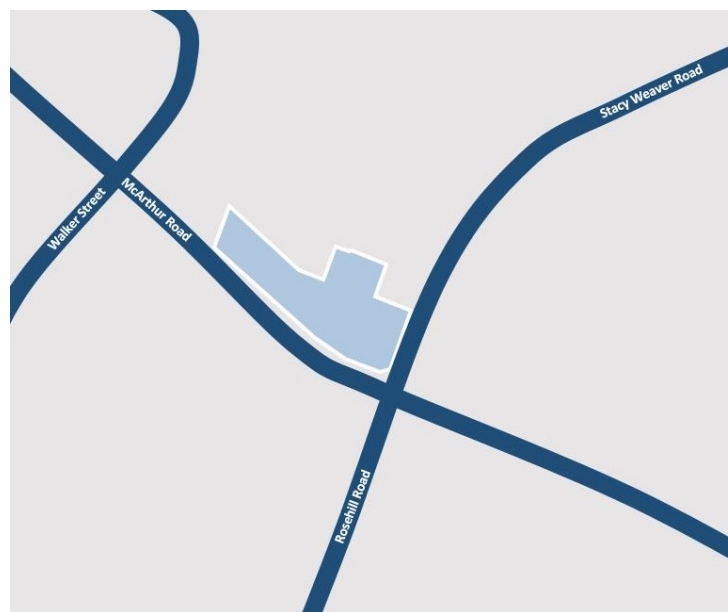
## 3.59 ACRE LOT ON MCARTHUR RD & STACY WEAVER DR

### Offering Summary

- Sale Price: \$710,000.00
- Size: 3.59 Acres
- Zoned: LC - Limited Commercial
- Frontage: 727 Feet off McArthur Road  
223 Feet off Stacy Weaver Drive
- Traffic Count: 15,500 VPD on McArthur Road  
13,000 VPD on Stacy Weaver Drive

### Property Description

3.59-Acre lot located at the NW intersection of McArthur Rd & Rosehill Rd (Stacy Weaver Dr). Property is less than 1 mile from the 2-95 Interchange & 1.5 miles from Ramsey St. Minutes from Methodist College which serves approx. 2,300 students, 1,170 of which on campus in the college's 19 residence halls. Just a few miles from Ft. Bragg, world's largest army base by population. With newly acquired LC zoning, this is a prime location for a neighborhood strip center.



**Franklin Johnson**

910.818.8400 |

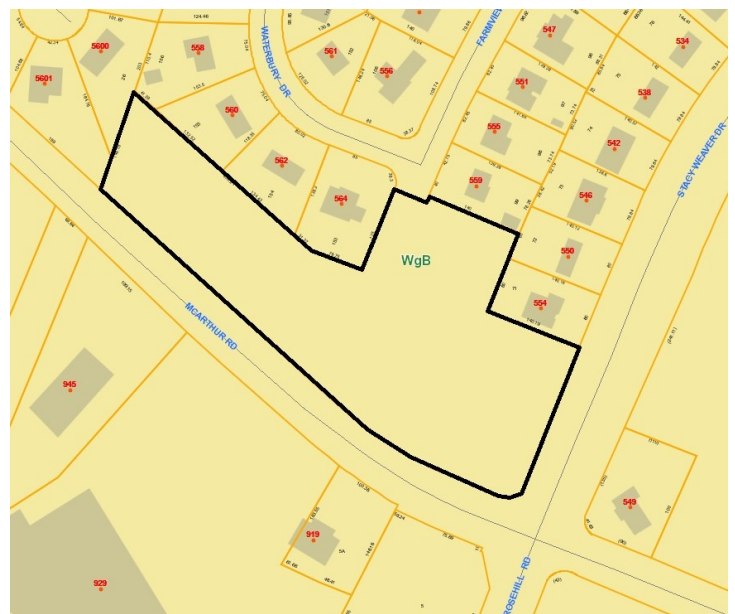
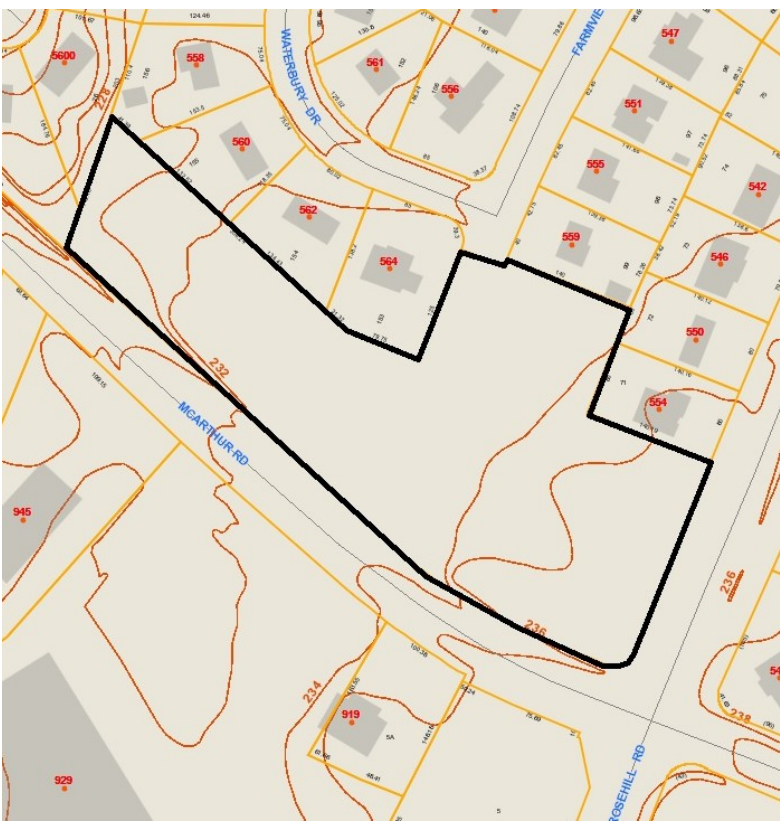
Franklin@franklinjohnsoncommercial.com

# FOR SALE

McArthur Rd & Stacy Weaver Dr  
Fayetteville, NC 28311



## 3.59 ACRE LOT ON McARTHUR RD & STACY WEAVER DR



**Franklin Johnson**  
910.818.8400 |  
Franklin@franklinjohnsoncommercial.com