



# Office Space Available for Lease

**1200 - 1270 NE WINDSOR DRIVE  
LEE'S SUMMIT, MISSOURI**

## Property Highlights

- (±) 4,000 - 6,900 sf move-in ready space available
- Well maintained office complex
- High-finish office space
- Easily accessible from I-470, 291 Hwy., and 50 Hwy.
- Abundant surface parking
- Exterior signage available
- Close to shopping, restaurants and other services
- For lease starting at \$15.95/sf, modified gross

*For information, please contact:*

**Michael L. VanBuskirk, SIOR, CCIM, CRE**

*Vice Chairman, Principal*

t 816-512-1010

mvanbuskirk@nzimmer.com

**Justin A. Beal**

*Executive Managing Director, Principal*

816-268-4241

jbeal@nzimmer.com

**Philip J. Botana**

*Associate Director*

t 816-512-1008

pbotana@ngzimmer.com

1220 Washington Street, Suite 300  
Kansas City, MO 64105

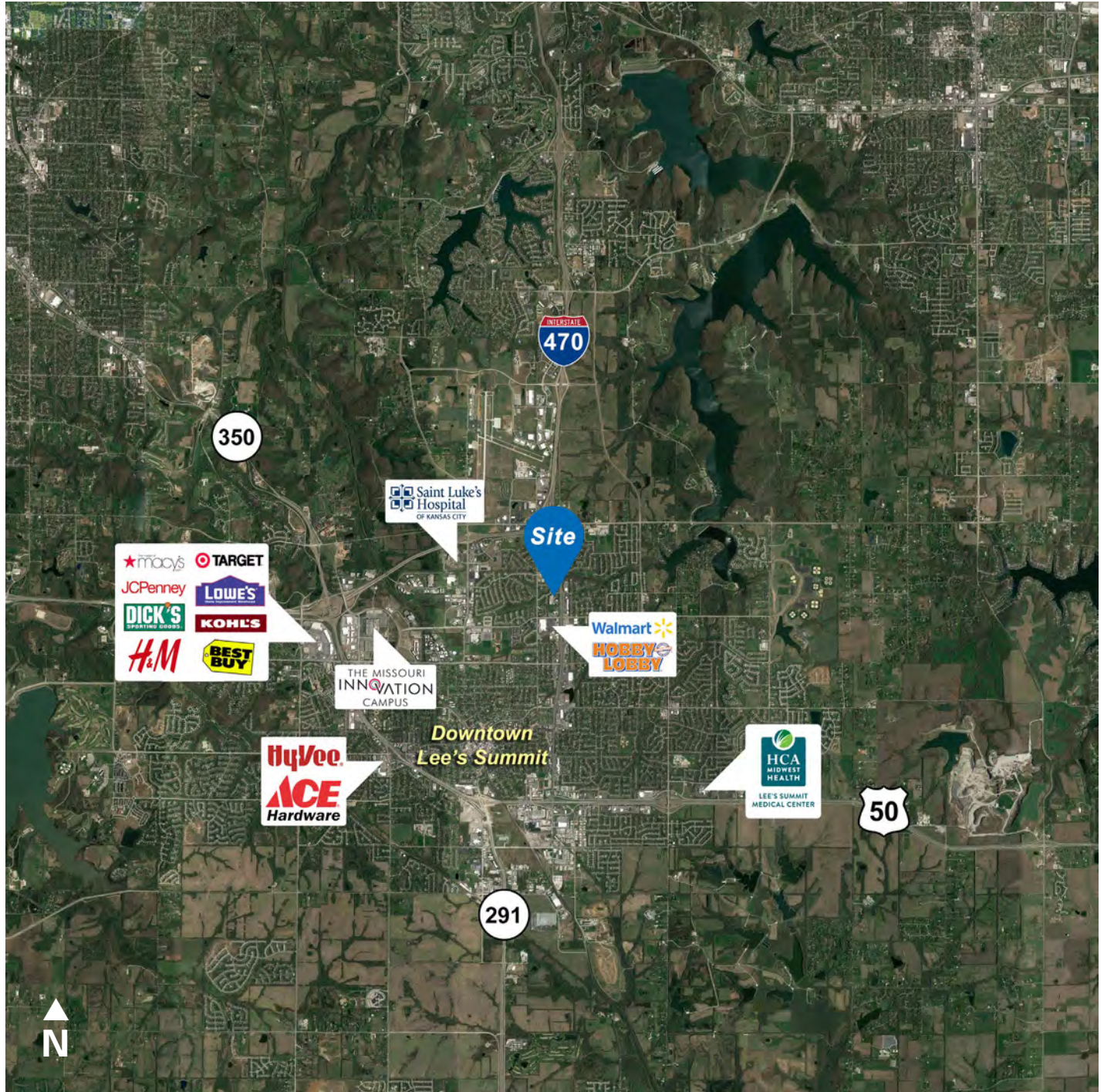
[nrmkzimmer.com](http://nrmkzimmer.com)



**NEWMARK  
ZIMMER**

The information contained herein has been obtained from sources deemed reliable but has not been verified and no guarantee, warranty or representation, either express or implied, is made with respect to such information. Terms of sale or lease and availability are subject to change or withdrawal without notice.

1200 - 1270 NE WINDSOR DRIVE, LEE'S SUMMIT, MISSOURI



CONTACT

**Michael L. VanBuskirk, SIOR, CCIM, CRE**

*Vice Chairman, Principal*

t 816-512-1010

mvanbuskirk@nzimmer.com

[nmrkzimmer.com](http://nmrkzimmer.com)

**Justin A. Beal**

*Executive Managing Director, Principal*

816-268-4241

jbeal@nzimmer.com

**Philip J. Botana**

*Associate Director*

t 816-512-1008

pbotana@ngzimmer.com

**NEWMARK**  
ZIMMER

1200 - 1270 NE WINDSOR DRIVE, LEE'S SUMMIT, MISSOURI



CONTACT

**Michael L. VanBuskirk, SIOR, CCIM, CRE**

*Vice Chairman, Principal*

t 816-512-1010

mvanbuskirk@nzimmer.com

[nmrkzimmer.com](http://nmrkzimmer.com)

**Justin A. Beal**

*Executive Managing Director, Principal*

816-268-4241

jbeal@nzimmer.com

**Philip J. Botana**

*Associate Director*

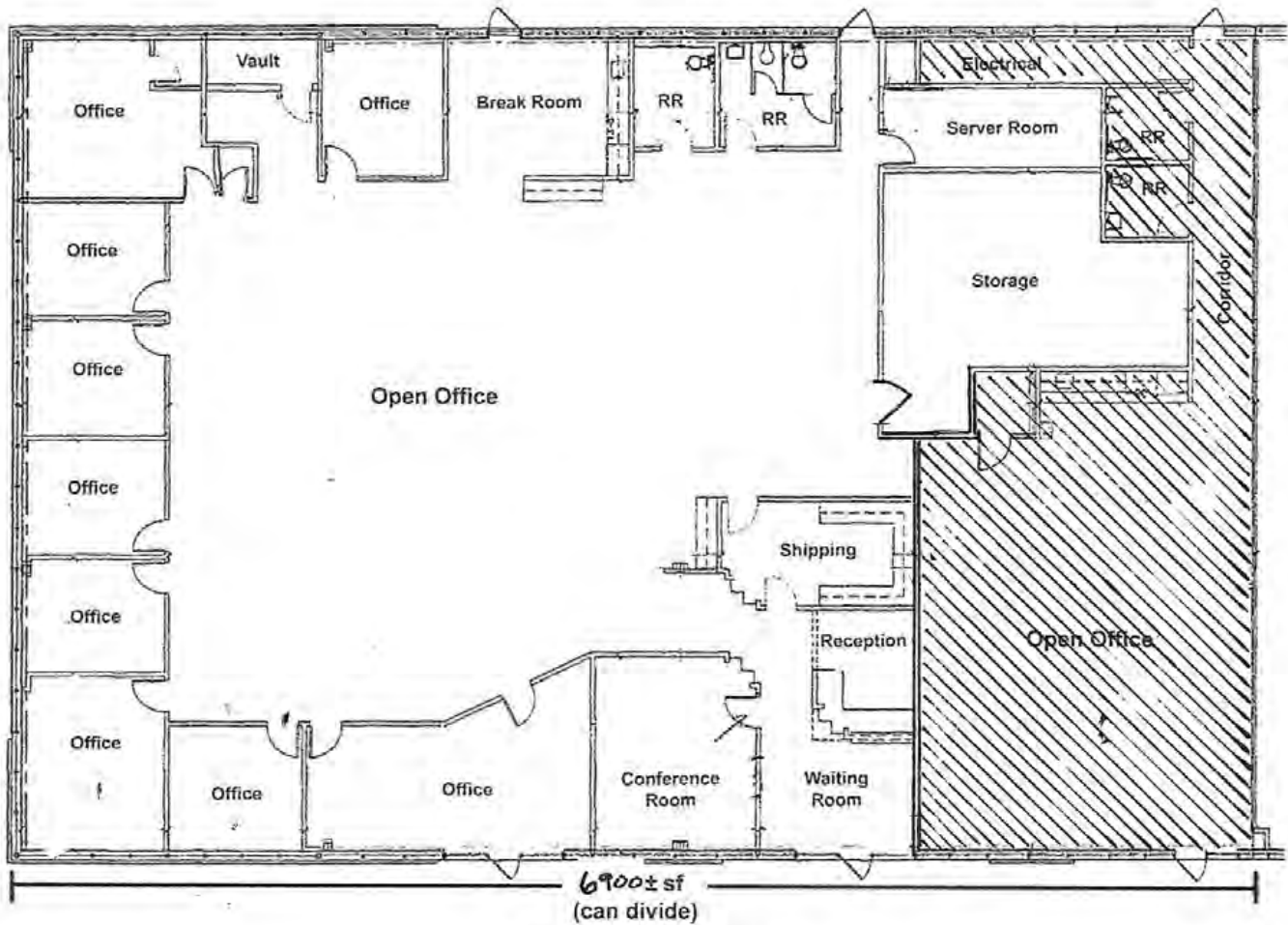
t 816-512-1008

pbotana@ngzimmer.com

**NEWMARK**  
ZIMMER

1200 - 1270 NE WINDSOR DRIVE, LEE'S SUMMIT, MISSOURI

Floor Plan - Building 3 Available Space



CONTACT

**Michael L. VanBuskirk, SIOR, CCIM, CRE**

*Vice Chairman, Principal*

t 816-512-1010

mvanbuskirk@nzimmer.com

**Justin A. Beal**

*Executive Managing Director, Principal*

816-268-4241

jbeal@nzimmer.com

**Philip J. Botana**

*Associate Director*

t 816-512-1008

pbotana@ngzimmer.com

[nmrkzimmer.com](http://nmrkzimmer.com)

**NEWMARK**  
ZIMMER

1200 - 1270 NE WINDSOR DRIVE, LEE'S SUMMIT, MISSOURI



CONTACT

**Michael L. VanBuskirk, SIOR, CCIM, CRE**

*Vice Chairman, Principal*

t 816-512-1010

mvanbuskirk@nzimmer.com

[nmrkzimmer.com](http://nmrkzimmer.com)

**Justin A. Beal**

*Executive Managing Director, Principal*

816-268-4241

jbeal@nzimmer.com

**Philip J. Botana**

*Associate Director*

t 816-512-1008

pbotana@ngzimmer.com

**NEWMARK**  
ZIMMER