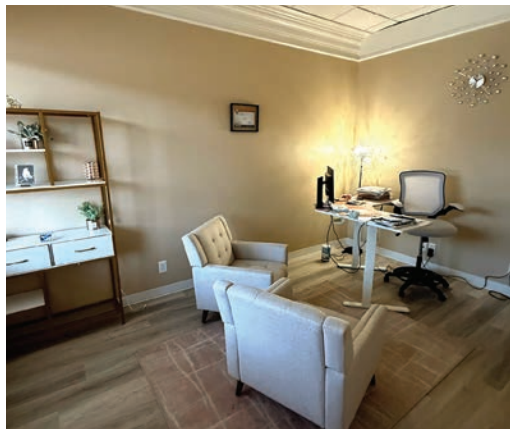




For Lease

110 Glancy Street, Suite 114, Goodlettsville, Tennessee



Modern office space well suited for professional or healthcare use.

PROPERTY HIGHLIGHTS

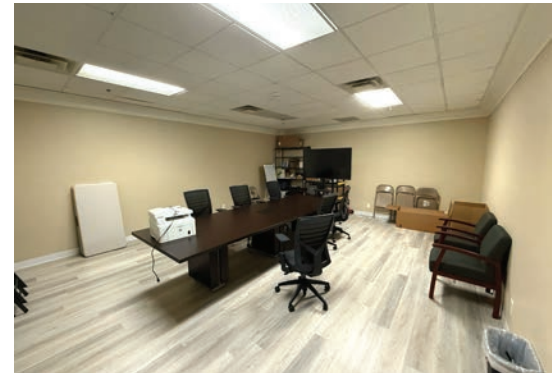
- + ±5,450 SF contiguous office space, can be demised to ±2,500 SF
- + Versatile space includes 16 private offices, conference room, large reception area, and 4 restrooms
- + Convenient front door parking
- + Central Goodlettsville location close to area shopping and dining
- + Easy access to I-65, Myatt Drive, and Vietnam Veterans Parkway

BILL HACKFORD, CCIM

Senior Vice President
615 733 2802
bhackford@nainashville.com



Property Photos



Demographics

	1 MILE	3 MILES	5 MILES
Population	4,425	45,893	106,541
2030 Population	5,037	49,195	112,831
Daytime Population	7,294	46,535	98,089
Households	1,910	19,456	44,681
Median Age	36.7	37.6	39.0
Median HH Income	\$59,977	\$65,660	\$73,926

