

**ROLAND PARK SHOPPING CENTER 4800 Roland Ave., Baltimore, MD 21010**

**1 Year Free on 5 Year Lease**



**Leasing Information**

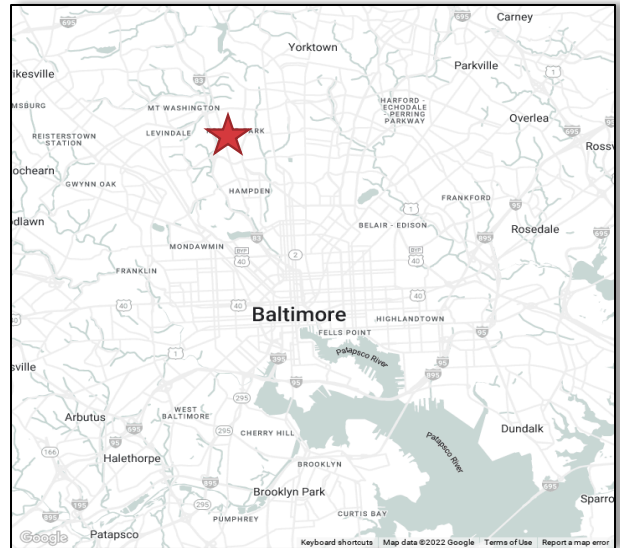
[www.wardrealestatellc.com](http://www.wardrealestatellc.com)

**Location** Roland Park is the first planned "suburban" community in North America. Roland Park Shopping Center is a single building strip of stores which opened in 1907 to serve the community, located at the corner of Upland Road and Roland Avenue. It has been credited by Guinness World Records as the world's first shopping center.

**Availability** Suite 300: 1,625 SF

**Property Description** Great office spaces available in a one-of-a-kind building.

**Current Tenants:** Johnny's Restaurant, Petit Louis Restaurant, Bank of America, Security Plus Credit Union, Eddie Jacobs



|                 | 2 mile | 5 mile | 10 mile |           | 2 mile                  | 5 mile    | 10 mile  |          |
|-----------------|--------|--------|---------|-----------|-------------------------|-----------|----------|----------|
| 2010 Population |        | 81,465 | 573,702 | 1,233,514 | Avg Household Income    | \$104,034 | \$80,536 | \$89,736 |
| 2023 Population |        | 72,191 | 547,969 | 1,214,05  | Median Household Income | \$67,920  | \$54,115 | \$66,157 |

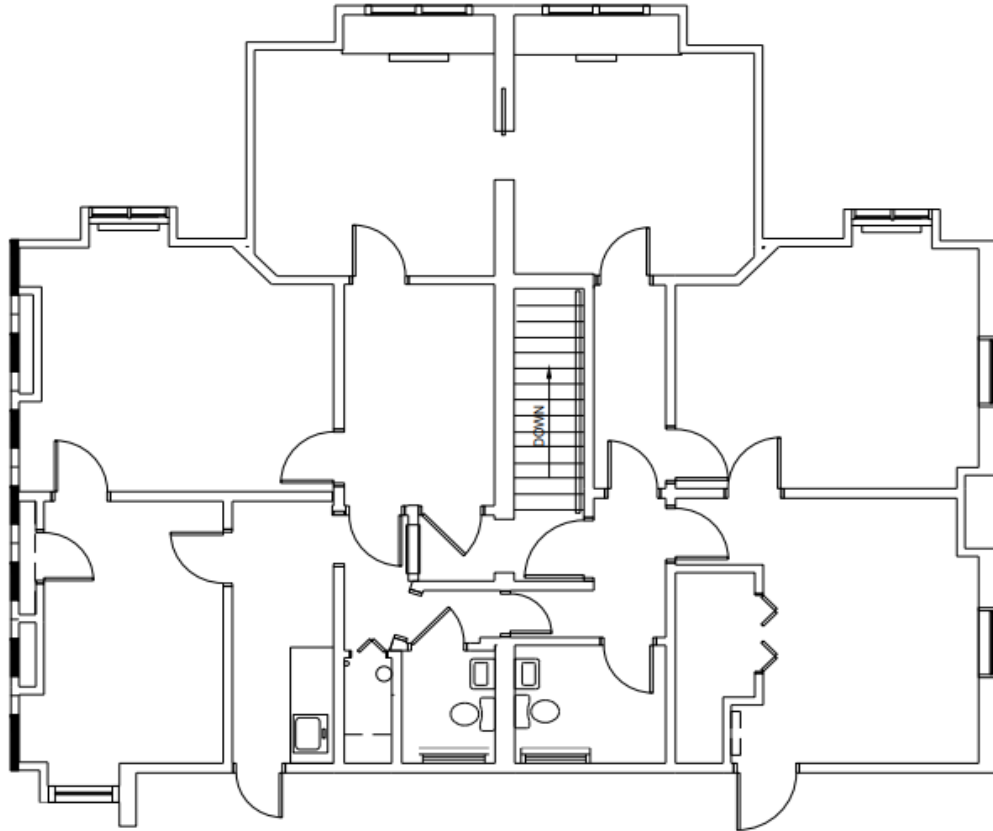
Tenants Include:



Tricia Ward Holloway, CCIM  
[tricia@wardrealestatellc.com](mailto:tricia@wardrealestatellc.com)  
561-202-5003

**ROLAND PARK SHOPPING CENTER** 4800 Roland Ave., Baltimore, MD 21010

**SUITE 300: 1,625 SF**



1 **MARKETING PLAN-1,625 SF**  
ID-1 1/8"=1'-0"

