

23388 MULHOLLAND DR. | CALABASAS, CA

Rare Calabasas Medical Office Space



PROPERTY DETAILS

- Stand-alone building in a beautifully-landscaped campus environment
- Convenient ingress and egress from the 101 Freeway
- Convenient surface parking
- Part of the Motion Picture & Television Fund Wasserman Campus and adjacent to a future 300-unit CCRC development

Chris Isola

Executive Vice President
+1 213 239 6045
chris.isola@jll.com
License #01454942

Bryan Lewitt

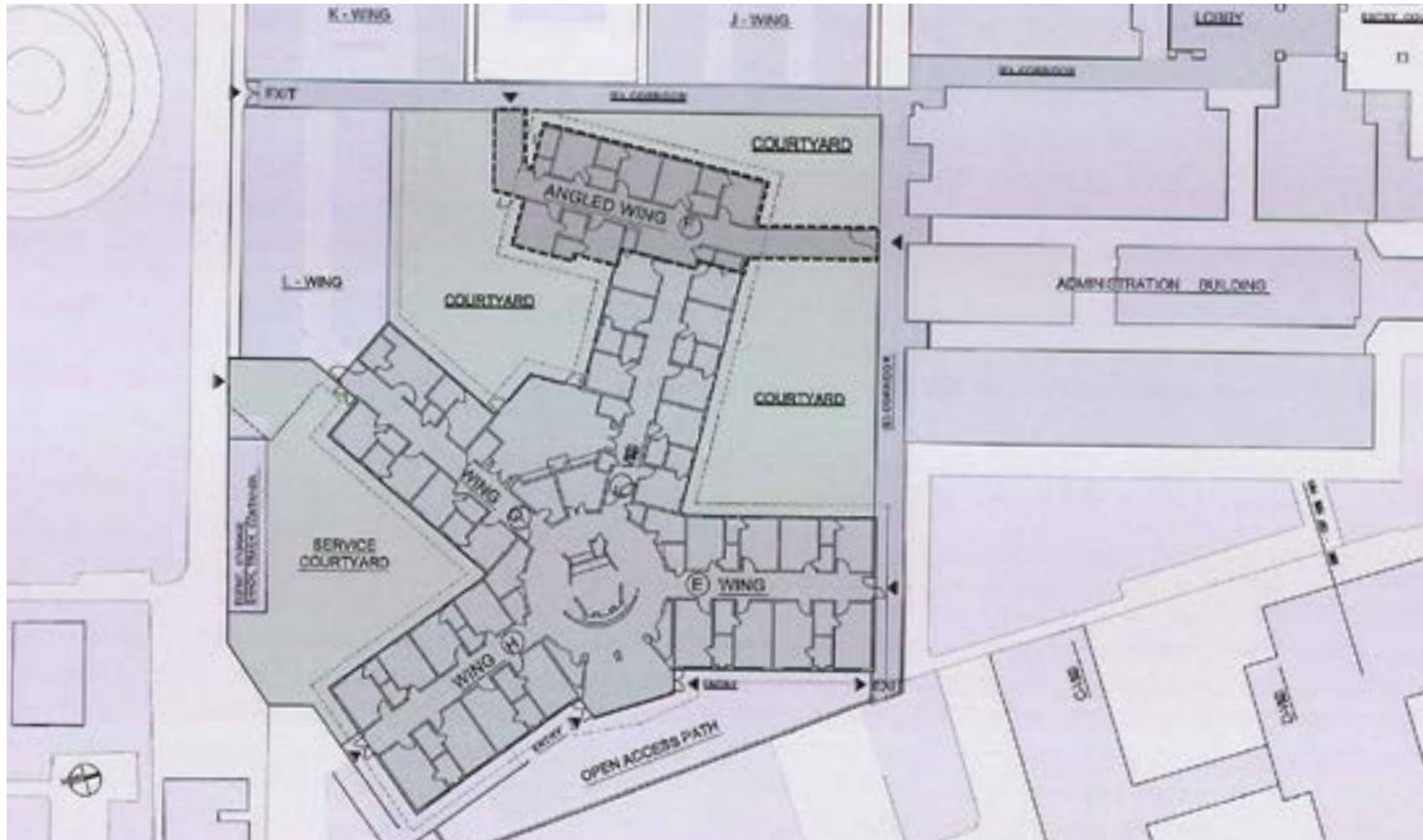
Managing Director
+1 213 239 6044
bryan.lewitt@jll.com
License #0101232



Jones Lang LaSalle Brokerage, Inc. RE License #01856260

Medical Office Space

CURRENT FLOOR PLAN



SPACE DETAILS

- Approximately 16,000 square feet, available immediately
- Space can be converted to a medical office / clinical build-out
- Landlord to provide free rent in lieu of TI allowance
- Exterior building/monument signage potentially available

Medical Office Space

HYPOTHETICAL REMODELED FLOOR PLAN



Renderings



CONTACT US:

Chris Isola

Executive Vice President
+1 213 239 6045
chris.isola@jll.com
License #01454942

Bryan Lewitt

Managing Director
+1 213 239 6044
bryan.lewitt@jll.com
License #0101232



Although information has been obtained from sources deemed reliable, neither Owner nor JLL makes any guarantees, warranties or representations, express or implied, as to the completeness or accuracy as to the information contained herein. Any projections, opinions, assumptions or estimates used are for example only. There may be differences between projected and actual results, and those differences may be material. The Property may be withdrawn without notice. Neither Owner nor JLL accepts any liability for any loss or damage suffered by any party resulting from reliance on this information. If the recipient of this information has signed a confidentiality agreement regarding this matter, this information is subject to the terms of that agreement. ©2023. Jones Lang LaSalle IP, Inc. All rights reserved.