

212 N ABERDEEN

RETAIL SPACE FOR LEASE | FULTON MARKET



4,441 SF Retail Space | For Lease | Fulton Market | 212 N Aberdeen, Chicago, IL 60607 | info@goldstreetre.com

BACK ON THE MARKET

212 N Aberdeen Street, Suite 120 | Fulton Market | Chicago, IL 60607

Available for Immediate Occupancy | Retail Flagship | 4,441 RSF

- **Location:** Prime ground-floor retail space in the heart of Fulton Market, one of Chicago's most vibrant districts for fashion, food, and culture
- **Size:** ±4,441 RSF with prominent street-facing storefront on Aberdeen Street
- **Condition:** Warm Shell Delivery
- **Ceiling Height:** Soaring clear height with exposed roof structure and skylight
- **Term:** Through approximately late 2034 with 1x 10-year renewal option
- **Permitted Uses:** Fashion retail, showroom, creative office, or hospitality/event uses
- **Now Open:** 19-story building with 363 luxury apartment units by LG Group
- **Co-Tenants:** Join the viral Tilly Bagel Shop, as well as an all-day cafe and local homegoods store opening soon

A Neighborhood of Innovation and Influence

Fulton Market continues to redefine Chicago's commercial core. Once rooted in industry, the district now pulses with creativity, global brands, chef-driven restaurants, and forward-thinking retail. Steps from Google's Midwest HQ, this location places you in the epicenter of energy and evolution.

Immediate Neighbors:



TOKYO
Nails



HermanMiller

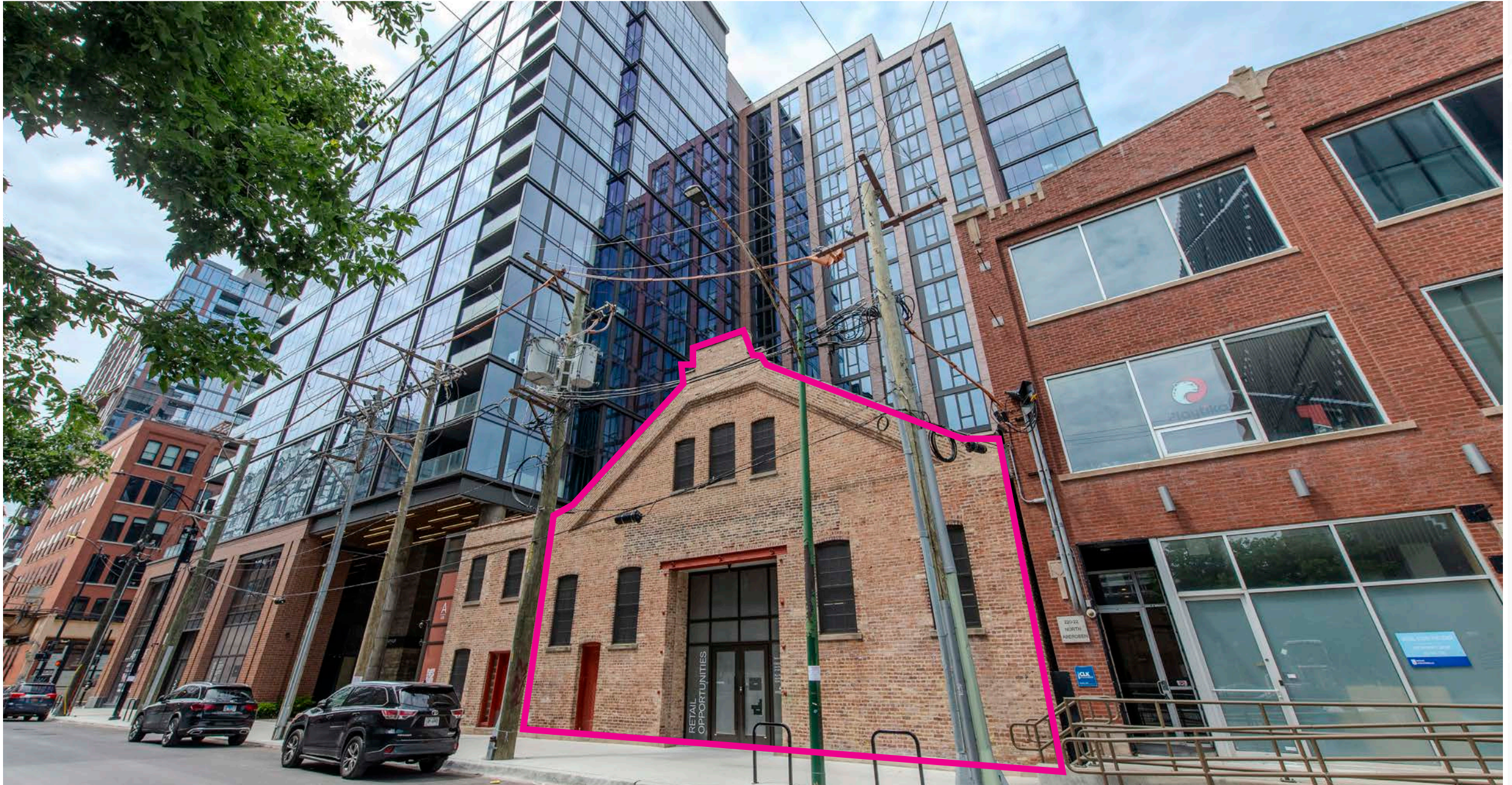
il Carciofo

Osaka
COCINA NIKKEI

patagonia[®]

4,441 SF - GROUND FLOOR

212 N Aberdeen | Chicago, IL 60607



4,441 SF Retail Space | For Lease | Fulton Market | 212 N Aberdeen, Chicago, IL 60607 | info@goldstreetre.com

4,441 SF - GROUND FLOOR

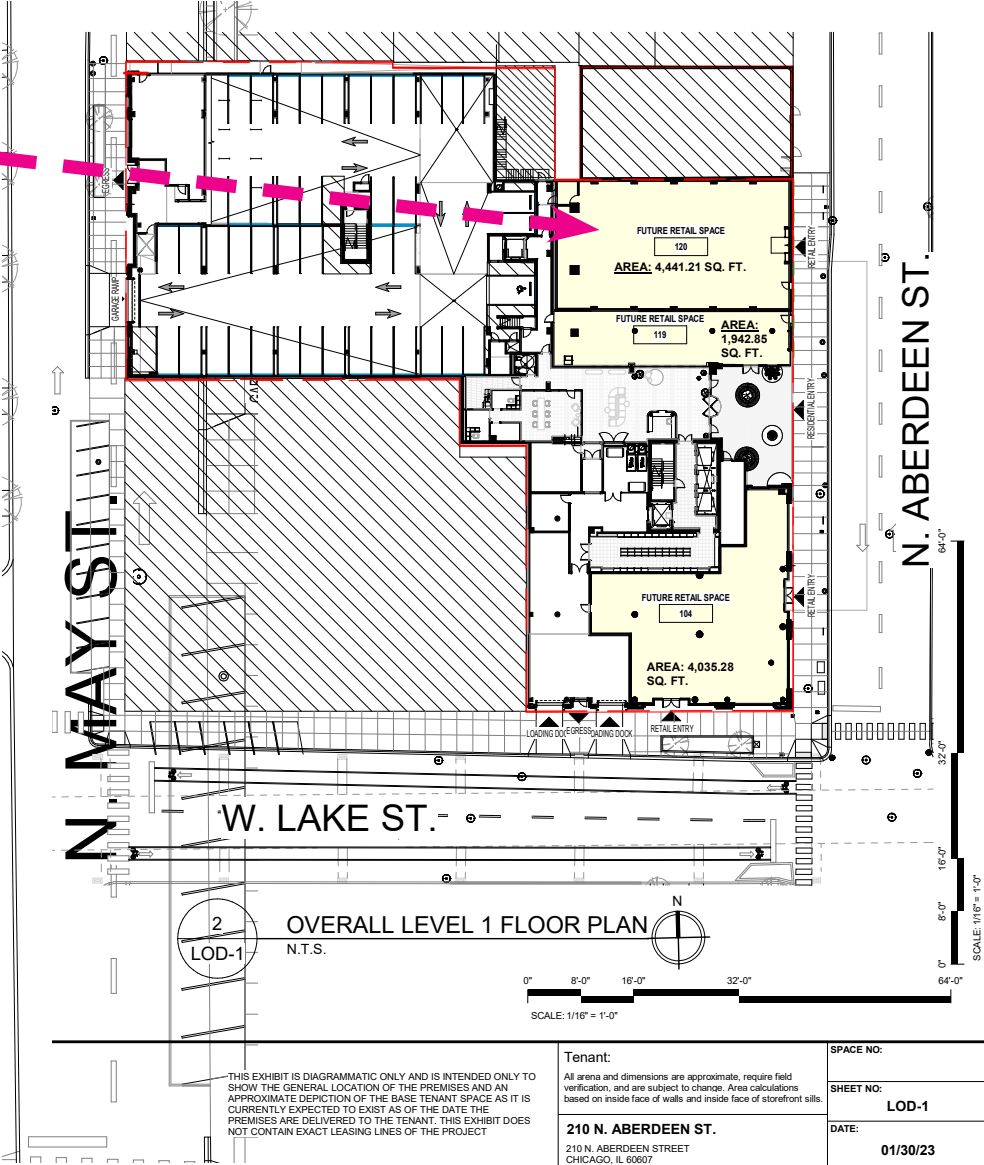
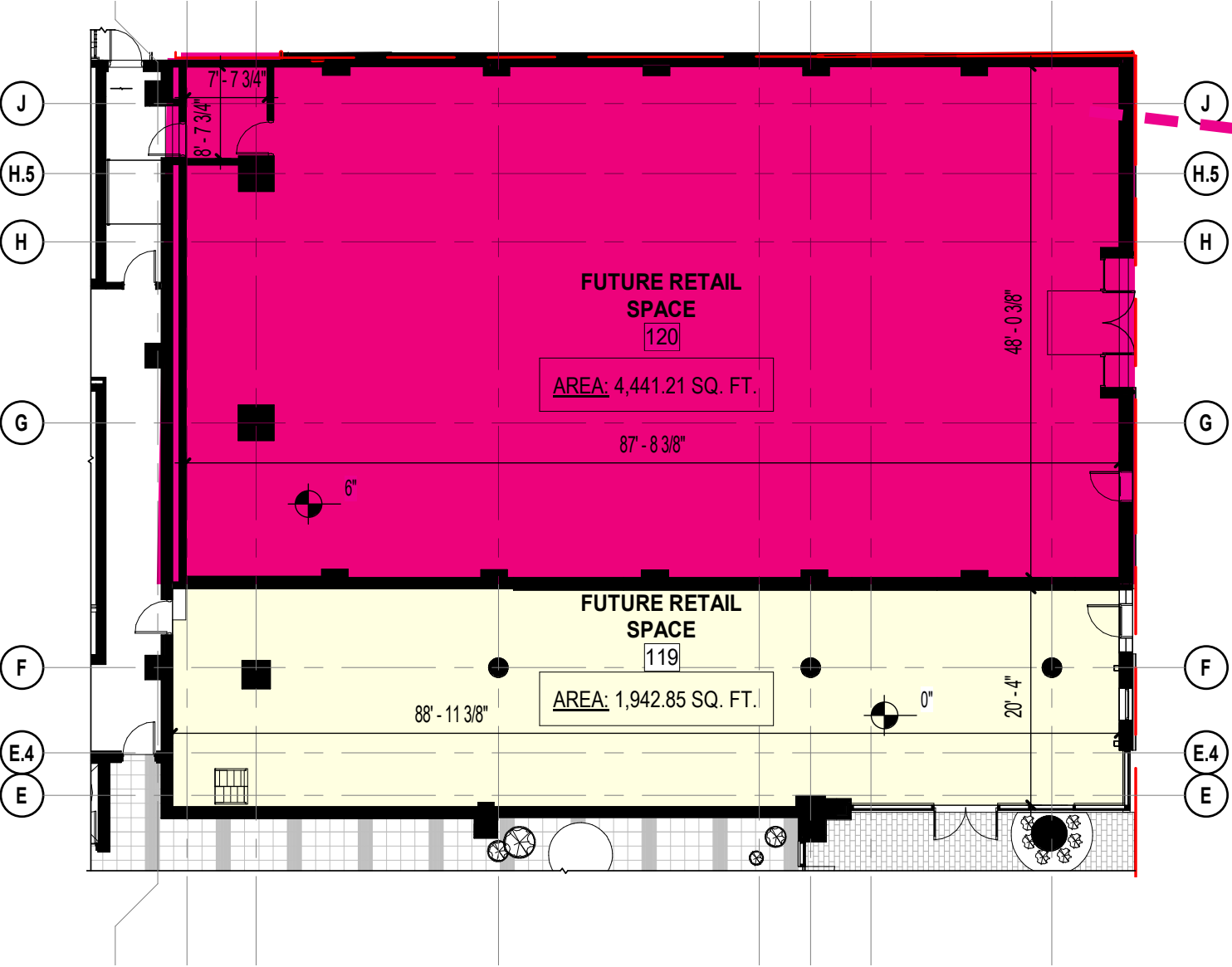
212 N Aberdeen | Chicago, IL 60607



4,441 SF Retail Space | For Lease | Fulton Market | 212 N Aberdeen, Chicago, IL 60607 | info@goldstreetre.com

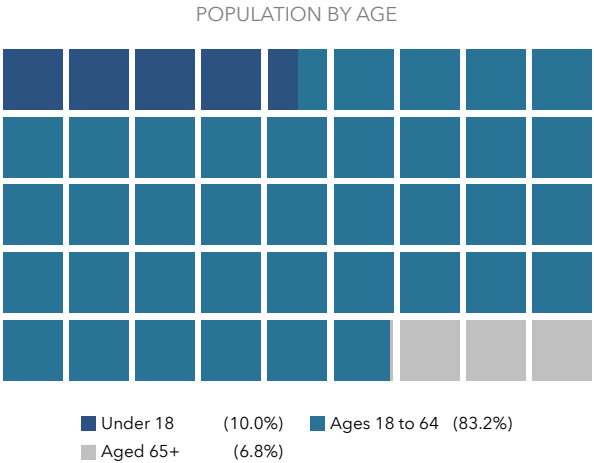
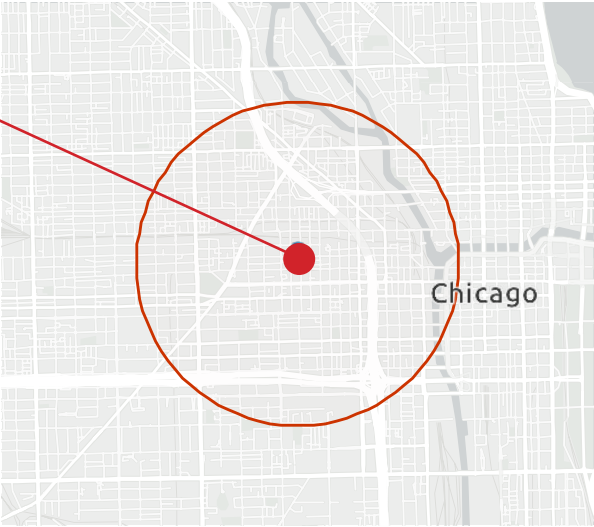
4,441 SF - GROUND FLOOR

212 N Aberdeen | Chicago, IL 60607



LOCATION

ONE MILE RADIUS / DEMOGRAPHICS



Source: This infographic contains data provided by Esri (2025, 2030), Esri-U.S. BLS (2025), ACS (2019-2023). © 2025 Esri

Source: This infographic contains data provided by Esri (2025, 2030), Esri-U.S. BLS (2025), ACS (2019-2023).

©2025 Esri

Population Trends and Key Indicators

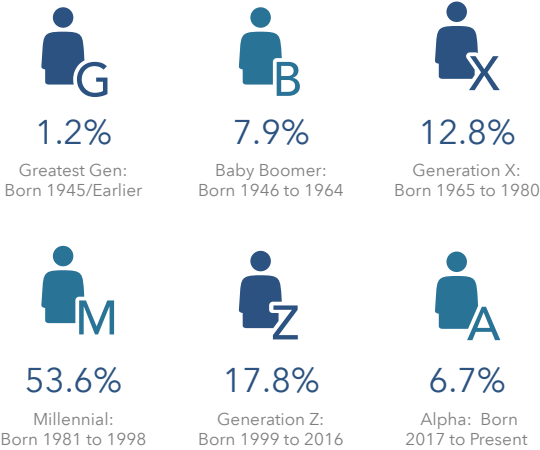
212 North Aberdeen Street, Chicago, Illinois, 60607
Ring of 1 mile

66,361	39,150	1.67	33.2	\$146,864	\$521,266	111	96	65
Population	Households	Avg Size Household	Median Age	Median Household Income	Median Home Value	Wealth Index	Housing Affordability	Diversity Index

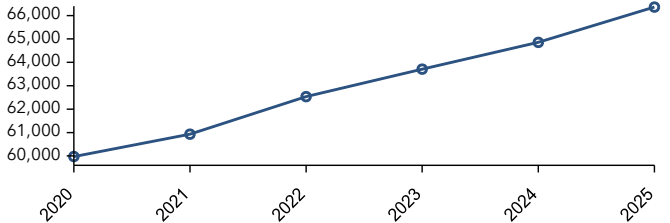
MORTGAGE INDICATORS



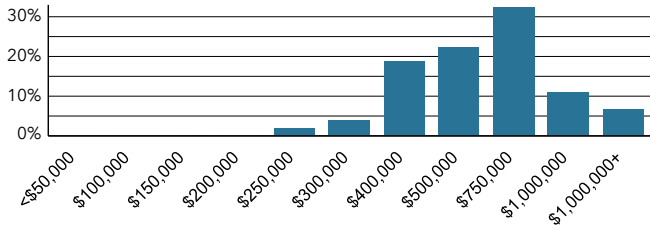
POPULATION BY GENERATION



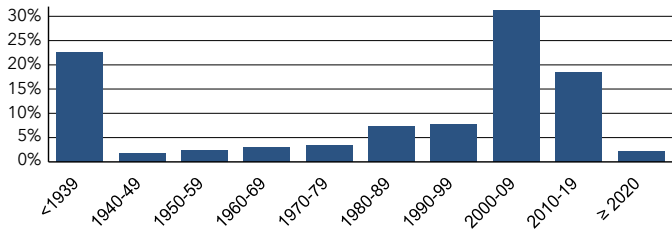
Historical Trends: Population



Home Value



Housing: Year Built



Photography by Ogan Borekci



FOR PROPERTY INFORMATION:

David Goldberg
david@goldstreetre.com
(847) 274-8504

Allan Perales
allan@goldstreetre.com
(312) 852-5526

4,441 SF Retail Space | For Lease | Fulton Market | 212 N Aberdeen, Chicago, IL 60607 | info@goldstreetre.com