



FOR LEASE

RIVERWALK PLACE

2900 S. Telephone Road
Moore, OK

Building Size: 30,500 sf
Available sf: 2,475 sf
Rental Rate: \$23.50/sf. FSG

IDEAL LOCATION FOR MEDICAL AND
PROFESSIONAL OFFICE SPACE



Steven E. Cottom, CCIM
Direct: 405-562-7493
steve@vanguarddevelopment.com

Michael C. Platt, CCIM
Direct: 405-562-7492
michael@vanguarddevelopment.com

11600 Broadway Extension
Suite 250
Oklahoma City, OK 73114

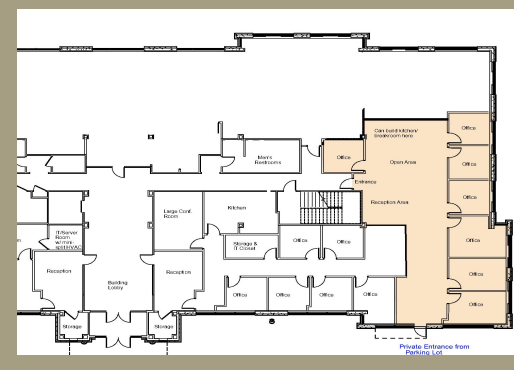
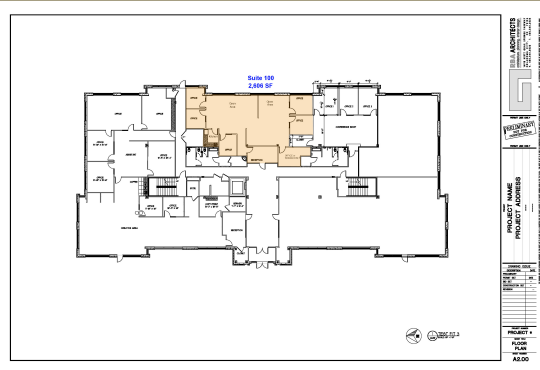
Phone: 405-840-5081
Fax: 405-840-5084

www.vanguarddevelopment.com

- Floor Plates: 15,750 sf ±
- Avail. sf: 5,081 sf (Suites: 2,606 sf. & 2,475 sf.) or Indian Hills Rd. exits
- New Offices Finishes
- Generous Tenant Finish Allowance
- Great Visibility from I-35
 - 125,000 vehicles per day
- Located on a Growing Medical Corridor:
 - .5 miles from Moore Medical Complex
 - 3 miles from Norman Regional Healthplex
- Excellent access via SW 19th St.
- Covered Parking Available
- 24 hour key card access
- Video surveillance
- Close proximity to restaurants, retail amenities, hotels, & hospitals



vanguard
DEVELOPMENT



ACCESSIBILITY

- Ideally located on Telephone Road near I-35 and SW 19th
- Minutes from Norman and south Oklahoma City trade areas