

COLUMBIA MEDICAL PLAZA

8614 East Mill Plain Blvd | Vancouver, WA



For leasing information contact:

LAEL CROMPTON, Senior Director, Leasing

310.293.2231 | LCrompton@pmbres.com | CA Lic. 01871298

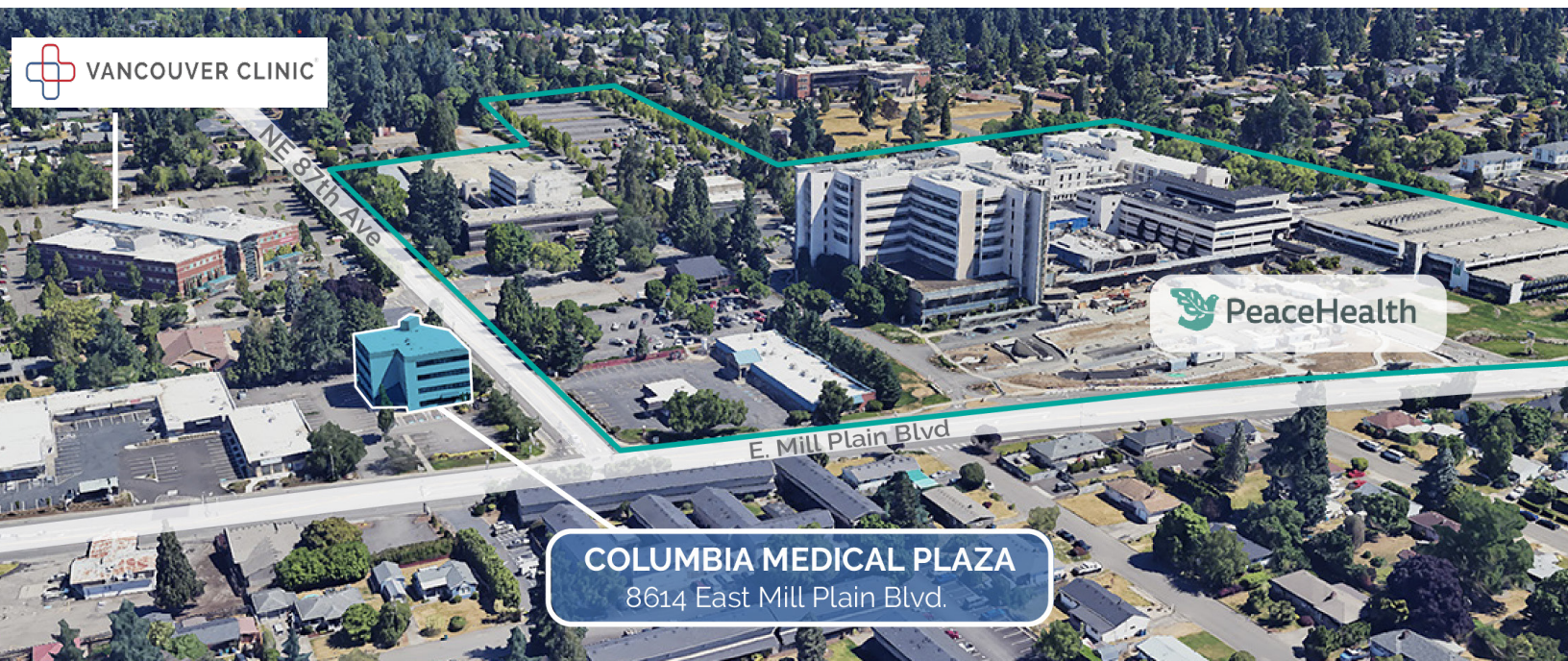
PMBRES.COM

PROPERTY HIGHLIGHTS

COLUMBIA MEDICAL PLAZA

8614 East Mill Plain Blvd | Vancouver, WA 98664

- NEW 1,416 SF move-in ready spec suite
- Full floor occupancy available January 2026 – total 5,787 SF, divisible to 1,104 SF
- Four-story, 23,000 SF Medical Office Building
- Within walking distance to PeaceHealth Southwest Medical Center
- Excellent visibility from East Mill Plain Boulevard, a major thoroughfare
- Dedicated property management and maintenance staff
- Easy access to major freeways and public transportation



For leasing information contact:

LAEL CROMPTON, Senior Director, Leasing

310.293.2231 | LCrompton@pmbres.com | CA Lic. 01871298

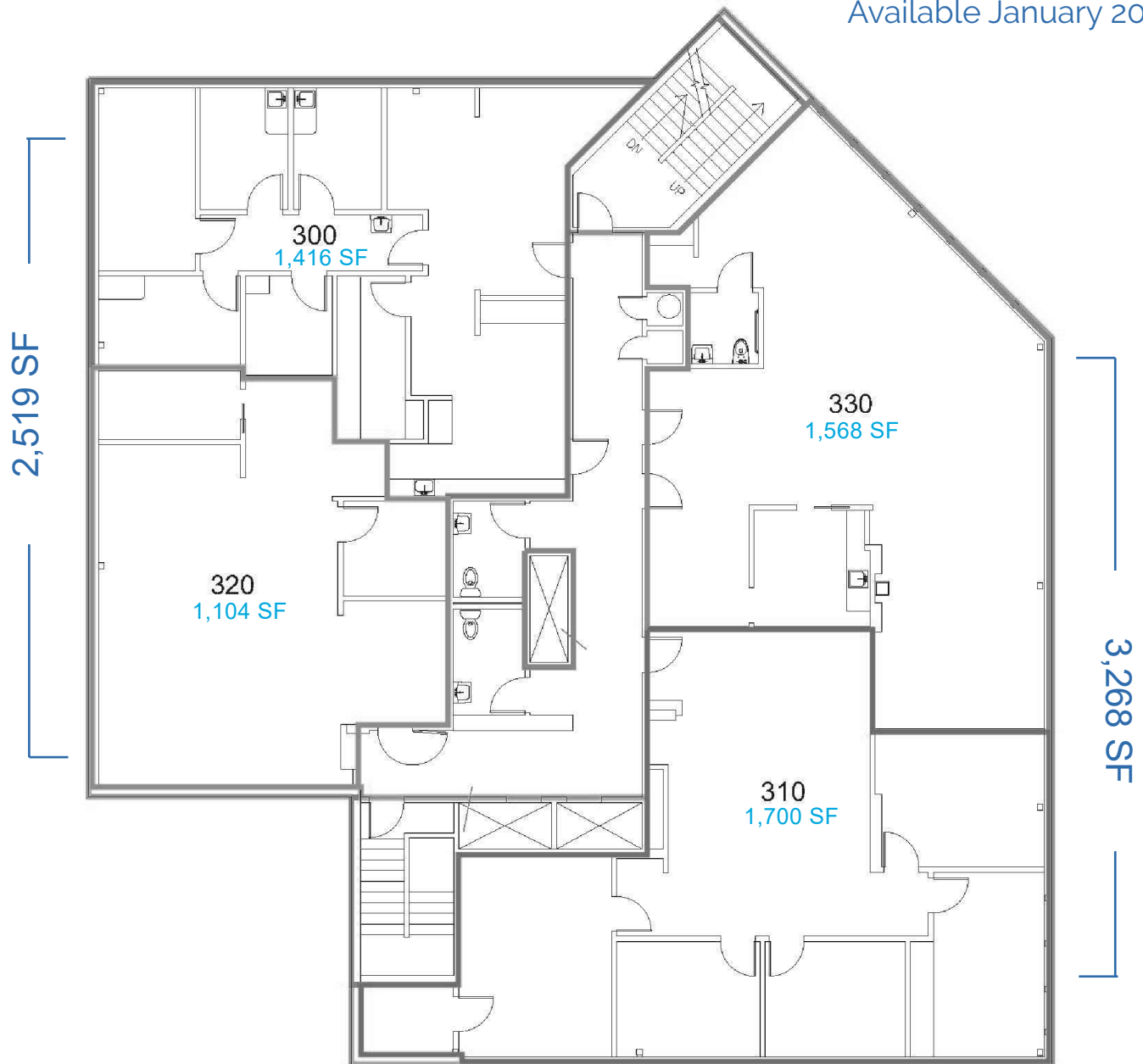
PMBRES.COM

AVAILABLE SPACE

3RD FLOOR – FULL FLOOR

5,787 RSF

Available January 2026



For leasing information contact:

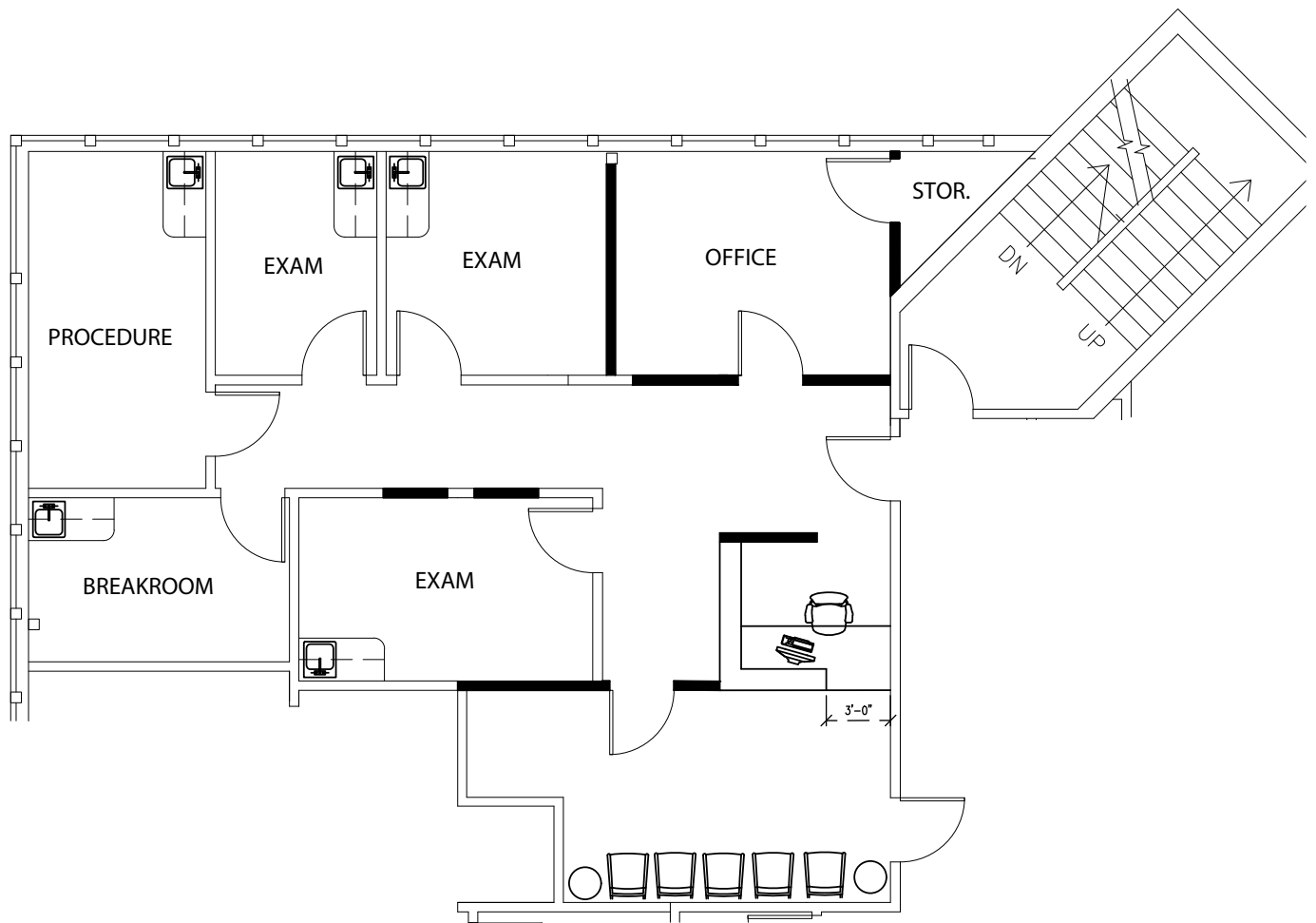
LAEL CROMPTON, Senior Director, Leasing

310.293.2231 | LCrompton@pmbres.com | CA Lic. 01871298

AVAILABLE SPACE

MOVE-IN READY SPEC SUITE
SUITE 300
1,416 RSF

Virtual tour, click [HERE](#)



For leasing information contact:

LAEL CROMPTON, Senior Director, Leasing

310.293.2231 | LCrompton@pmbres.com | CA Lic. 01871298