

ARMSTRONG BUSINESS CENTER II

MINNEAPOLIS
SOUTHEAST SUBMARKET

980 Lone Oak Road
Eagan, MN 55121



FOR LEASE

±29,247 SF

Suite 145



LEASED BY





PROPERTY OVERVIEW

Property Size 154,950 SF

Year Built 1992

Parking 275 Spaces (1.63/1,000 SF)

Clear Height 20'

Availability Immediate

Suite 145

Total Size 29,947 SF

Office Size 5,466 SF

Lease Rates Negotiable

Loading 3 Dock Doors

1 Drive-In

Ability to Add 1 Dock Door

CAM & Tax (2025) \$1.61 PSF Tax

\$1.75 PSF CAM

\$3.36 PSF Total

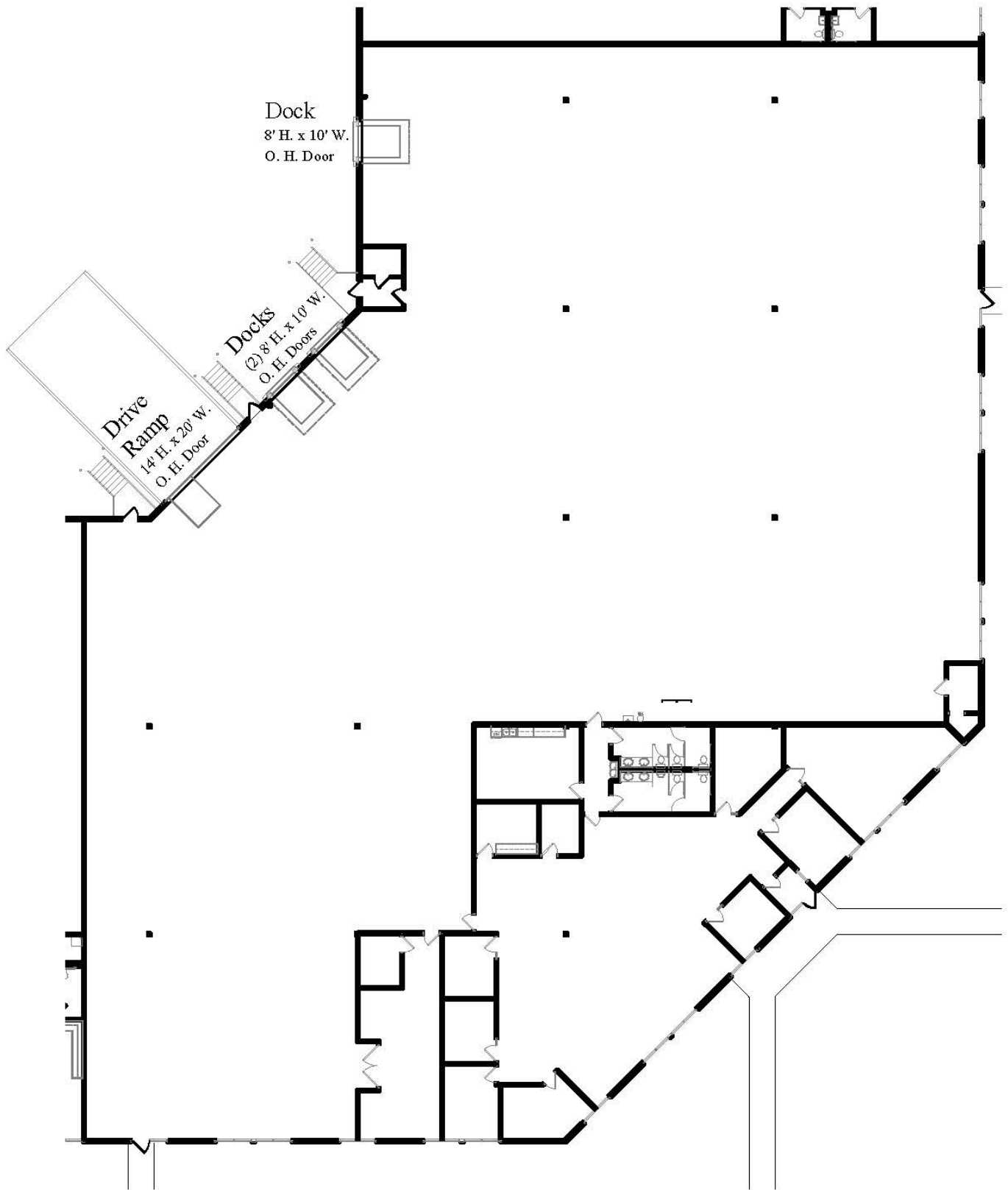
FOR LEASE

±29,247 SF



This is not an offer or acceptance of an offer to lease space. A lease will only be offered or made in a written agreement signed by landlord. No representation or warranty of any kind is made by landlord unless set forth in a written definitive lease executed by the landlord.

MINNEAPOLIS
SOUTHEAST SUBMARKET



CONTACT INFORMATION



980 Lone Oak Road
Eagan, MN 55121

Alex Baron, SIOR

alex.baron@transwestern.com
(612) 359-1658

Nate Erickson, SIOR

nate.erickson@transwestern.com
(612) 359-1657

This is not an offer or acceptance of an offer to lease space. A lease will only be offered or made in a written agreement signed by landlord. No representation or warranty of any kind is made by landlord unless set forth in a written definitive lease executed by the landlord.



LEASED BY

