

RETAIL/FLEX BUILDING FOR SUBLEASE

233 W CAROLINA AVE
VARNVILLE, SC 29944

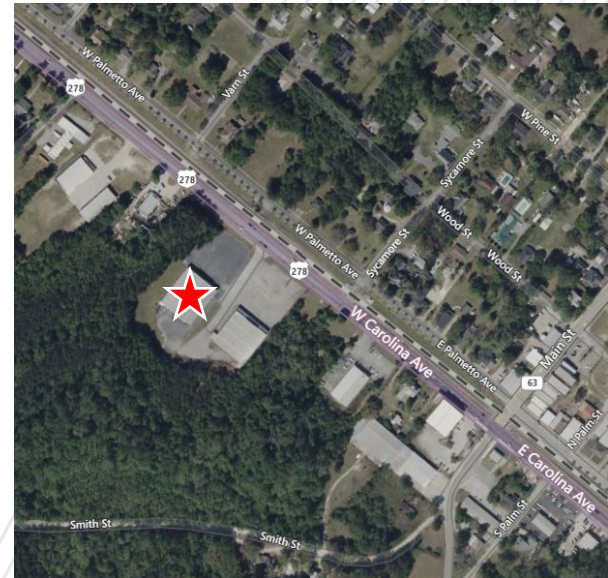


PROPERTY NOTES

Sublease term through 12/31/2025

BUILDING SF	30,000
LAND AC	2.54
PARKING	80+
BUILT	2009
RATE	\$6,000/month gross
Traffic Counts	9,348 VPD

SIGNAGE TYPE	Building
2-MILE (POP.)	2,700
5-MILE (POP.)	6,917
MED. INCOME	\$45,567
SPACE USE	Retail/Flex



DREW SCHARF

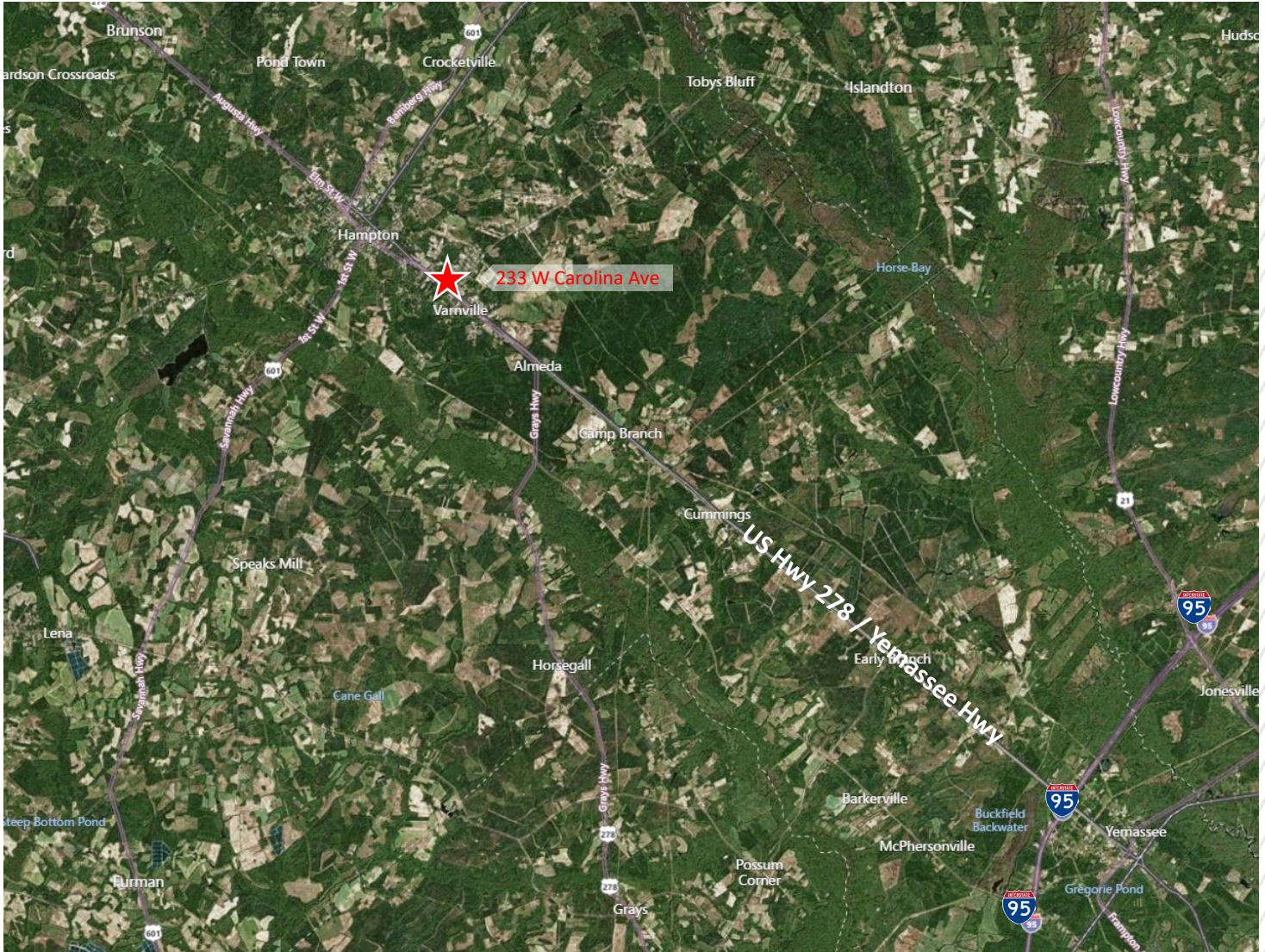
Associate
+1 843 608 9932
drew.scharf@cushwake.com

ERIC RIDLEHOOVER

Managing Director
+1 843 724 0111
eric.ridlehoover@cushwake.com

RETAIL/FLEX BUILDING FOR SUBLEASE

233 W CAROLINA AVE
VARNVILLE, SC 29944



DREW SCHARF
Associate
+1 843 608 9932
drew.scharf@cushwake.com

ERIC RIDLEHOOVER
Managing Director
+1 843 724 0111
eric.ridlehoover@cushwake.com