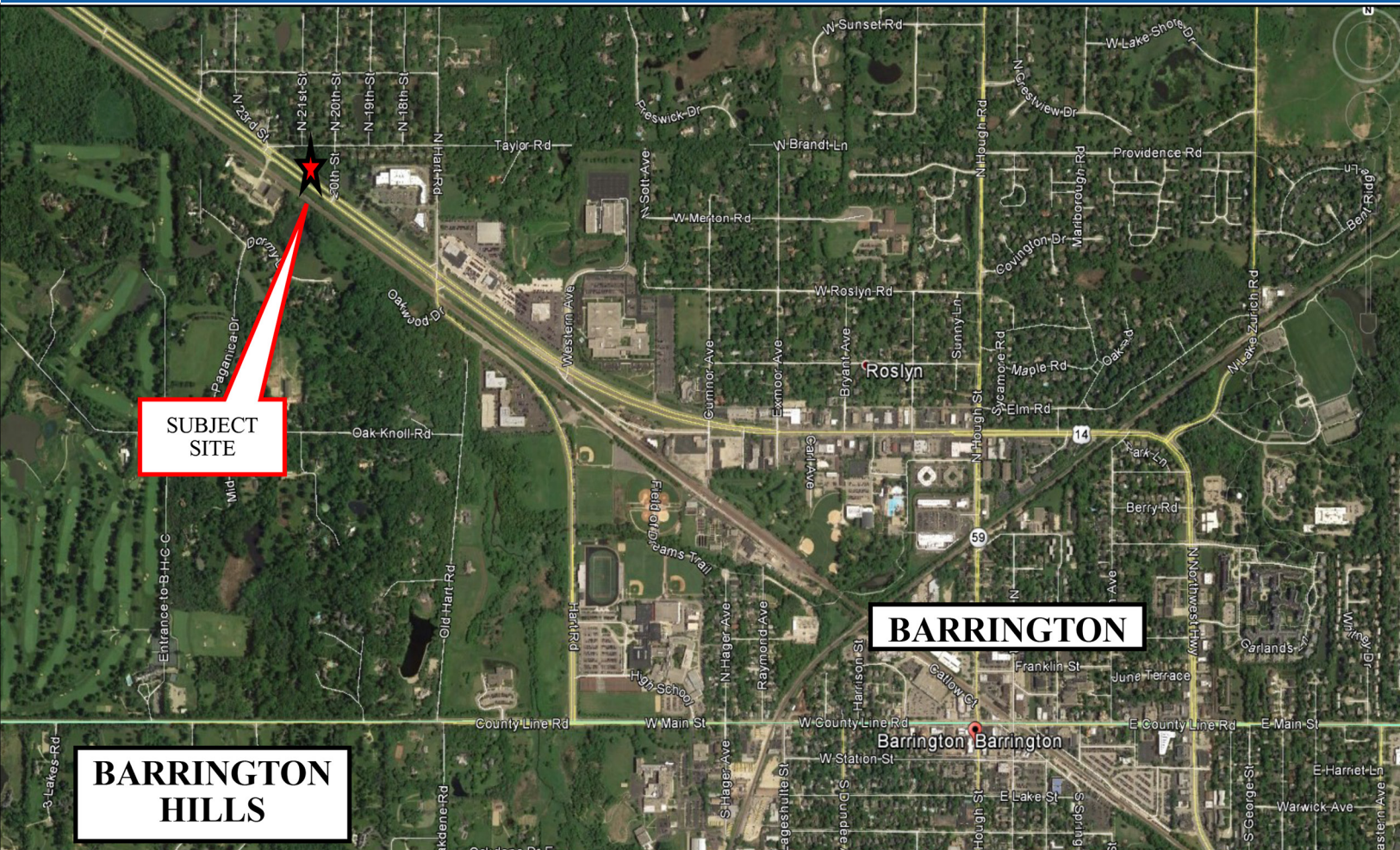




FOR SALE: PRIME BARRINGTON LAND PARCEL OF 1.45 ACRES

NW CORNER OF RT 14(NORTHWEST HWY) & 20TH STREET

******HUGE PRICE REDUCTION**** \$439,000 (\$6.95 PSF)**



1.45 Acres Located at the Northwest Corner of Route 14 & 20th Street
OVER 327 FEET OF FRONTAGE ON RT 14 (NORTHWEST HWY) OVER 27,900
CARS PER DAY
LOCATED 1 BLOCK NW OF THE BARRINGTON FOUNDRY RETAIL DEVELOPMENT

Prepared by:



**Chicagoland
Commercial**
REAL ESTATE

Randy Olczyk
Direct: 847.246.9611
Randy@chicagolandcommercial.com



1.45 ACRES ON NWC OF RTE 14 & 20TH ST BARRINGTON, IL

New Investment or Development Opportunity in the Barrington area adjacent to the Foundry

POTENTIAL USES:

Ideal for Restaurants, Retail, Medical, Office or Residential

TRAFFIC

- 327 feet of frontage on Route 14 with 27,900 vehicles per day,
Neighbors include: Northern Trust Bank, The Foundry Retail Center (Over 80,000 SF retail center) & Wickstrom Ford
- Unique investment opportunity to hold or develop 1.45 Acre prime parcel located in prestigious Barrington, IL
- Several parcels totaling \pm 1.45 Acres
- Zoning Unincorporated Lake County
- Taxes payable in 2022= \$1,845

DEMOGRAPHICS (2022)

	3 Miles	5 Miles
• Total Population	20,718	76,284
• Median HH Income	\$134,729	\$119,631

Prepared by:

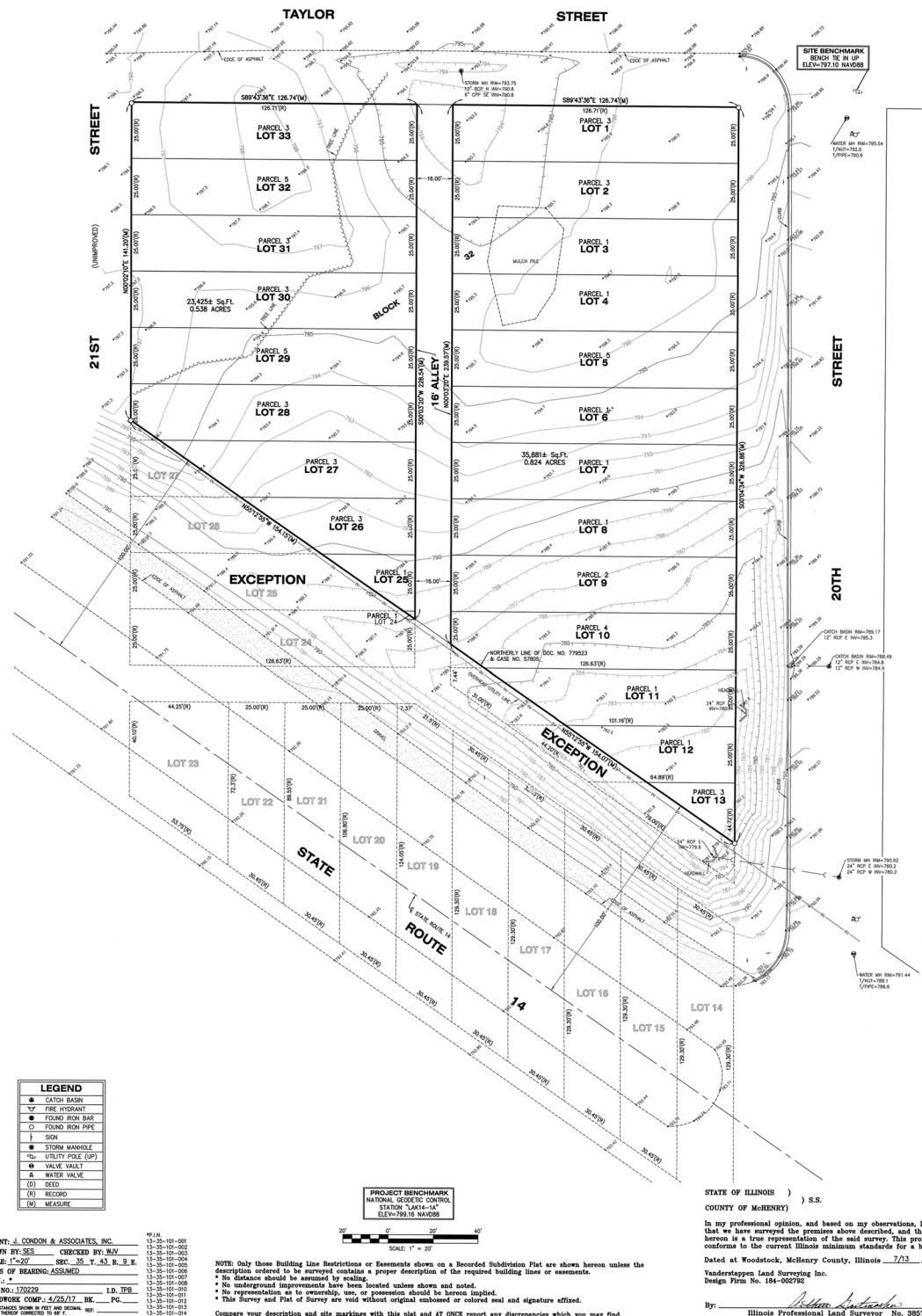


Randy Olczyk
Direct: 847.246.9611
Randy@chicagolandcommercial.com



LEASING
SALES
TENANT ADVISORY
MANAGEMENT

■ PLAT OF SURVEY



Brokers of Chicagoland Commercial, Inc. have a minority ownership interest in the property. Information contained herein has been obtained from the owners of the property or from other sources that we deem reliable. We have no reason to doubt its accuracy, but do not guarantee it