



GREENSBORO PARK

8180 & 8200 Greensboro Drive
Tysons, VA



**AVISON
YOUNG**



REVITALIZE

Extensive lobby renovations and upgrades in both 8180 and 8200 Greensboro Drive.



Tenant only Conference Centers and Pre-Function Lounge redesign and upgrade in 8200 Greensboro Drive.



Tenant Lounge expansion and upgrade in 8180 Greensboro Drive.



Fitness Center renovation and expansion at 8200 Greensboro Drive.



Common area Elevator Lobby and Corridor upgrades in 8180 and 8200 Greensboro Drive.



Brand new Outdoor Courtyard Area with hardscaping, seating and wifi between 8180 and 8200 Greensboro Drive.



[CLICK TO TOUR](#)

8200 LOBBY/LOUNGE



[CLICK TO TOUR](#)

8180 LOBBY/LOUNGE



HIGHLIGHTS

8180 and 8200 Greensboro Drive are part of a two-building complex, Greensboro Park, which is LEED Gold Certified, Wired Certified Gold and Fitwel certified and totals approximately 514,048 rentable SF.



On site amenities include:



Rideshare account during business hours to Tysons Corner, Spring Hill, and Greensboro Metro Stations



Two Conference Centers with Pre-Function Lounge



Tenant Lounge with Games and Wifi



Expanded Fitness Center with Showers and Lockers



Boulevard Café



Outdoor Lounge with Bocce



Ample Parking at 3.0 spaces/1,000 SF



Electric Car Charging Stations



Bike Room & Tune-up Station



Dry Cleaners



Easy access to Hot Lanes, I-495 and I-66

TENANT LOUNGE



WELLNESS

Fitwel-Certified

Greensboro Park has been awarded a Fitwel 1 Star Rating by the Center for Active Design. Greensboro Park joins buildings, sites, and communities from around the world as part of Fitwel Certification System, the world's leading certification system committed to building health for all.



Outdoor Areas

Tenants enjoy easy access to outdoor areas with lots of sunshine



On-Site Activity

On-site fitness available plus easy walkability to public transit



Healthy Options

Nearby farmers market and an unbeatable selection of eateries



Padel Ball

Coming soon to the premises, offering tenants another fun way to stay active.





FITNESS CENTER

 CLICK TO TOUR



CONFERENCE CENTER #1

 CLICK TO TOUR

ON-SITE AMENITIES



BOULEVARD CAFE

 CLICK TO TOUR



CONFERENCE CENTER #2

 CLICK TO TOUR



AT THE CORNER OF GREENSBORO AND EVERYTHING

Uber

FOR BUSINESS

Greensboro Park provides a tenant-only Uber account during normal business hours to Greensboro, Tysons Corner and Spring Hill Metro Stations.

ACCESS



TYSONS GALLERIA

The Cheesecake Factory	Maggiano's Little Italy
CMX Stone Bar	The Palm
Empanadas de Mendoza	P.F. Chang's
Entyse	Paul
Fogo de Chão	Andy's Pizza
Founding Farmers	Ralph's Coffee
Jiwa Singapura	Sweet Green
Lady M Confections	Wildfire
Lebonese Taverna	Yardhouse

THE BORO

70,000 SF Whole Foods	Poki DC
430,000 SF of Retail	Santouka Ramen
2,000 Residential Units	Tasty Kabob
19,000 SF Library	Tropical Smoothie Cafe
Look Dine-In Cinemas	Colour Bar
Bluestone Lane	Ethan Allen
Circa	LaserAway
El Bebe	MyEyeDr
Fish Taco	Paper Source
Flower Child	Roosters
Jeni's Splendid Ice Creams	The Shade Store
North Italia	Tyson's Nail Lounge
Paris Baguette	F45 Training

TYSONS CORNER CENTER

&pizza	Eddie V's
Barrel & Bushel	Five Guys
California Pizza Kitchen	La Sandia
California Tortilla	McDonald's
Capital Grille	Panda Express
Charleys Philly Steaks	Seasons 52
Chipotle Mexican Grill	Shake Shack
Chopathis Indian Kitchen	Silver Diner
Coastal Flats	T.G.I. Friday's
Earl's Kitchen + Bar	Wasabi

HOTELS

1. The Ritz-Carlton, Tysons Corner
2. DoubleTree by Hilton McLean Tysons
3. Courtyard by Marriott Tysons McLean
4. Hyatt Regency Tysons Corner Center
5. Hilton McLean Tysons
6. Residence Inn by Marriott
7. Hilton Garden Inn Tysons Corner
8. Tysons Corner Marriott

AMENITIES





8180



BUILDING AMENITIES

-  Tenant Lounge with games and wifi
-  Boulevard Café
-  Dry Cleaners

FLOOR	AVAILABILITY
4th	<u>CONTIGUOUS</u> - 9,609 SF 402 - 5,196 SF 404 - 4,413 SF
5th*	<u>CONTIGUOUS</u> - 24,245 SF 525/550/585 - 11,060 SF available 2/1/26 500/501/575 - 13,185 SF available 4/1/26 *Full 5th floor available 2026
6th	600 - 7,182 SF - Plug & Play 630 - 6,411 SF
7th	720 - 2,734 SF 750 - 7,536 SF available 7/1/26
8th	850 - 13,567 SF
9th	950 - 3,937 SF



GREENSBORO PARK

4TH FLOOR

SUITES 402/404 - 9,609 SF



8180

Greensboro Drive



GREENSBORO PARK

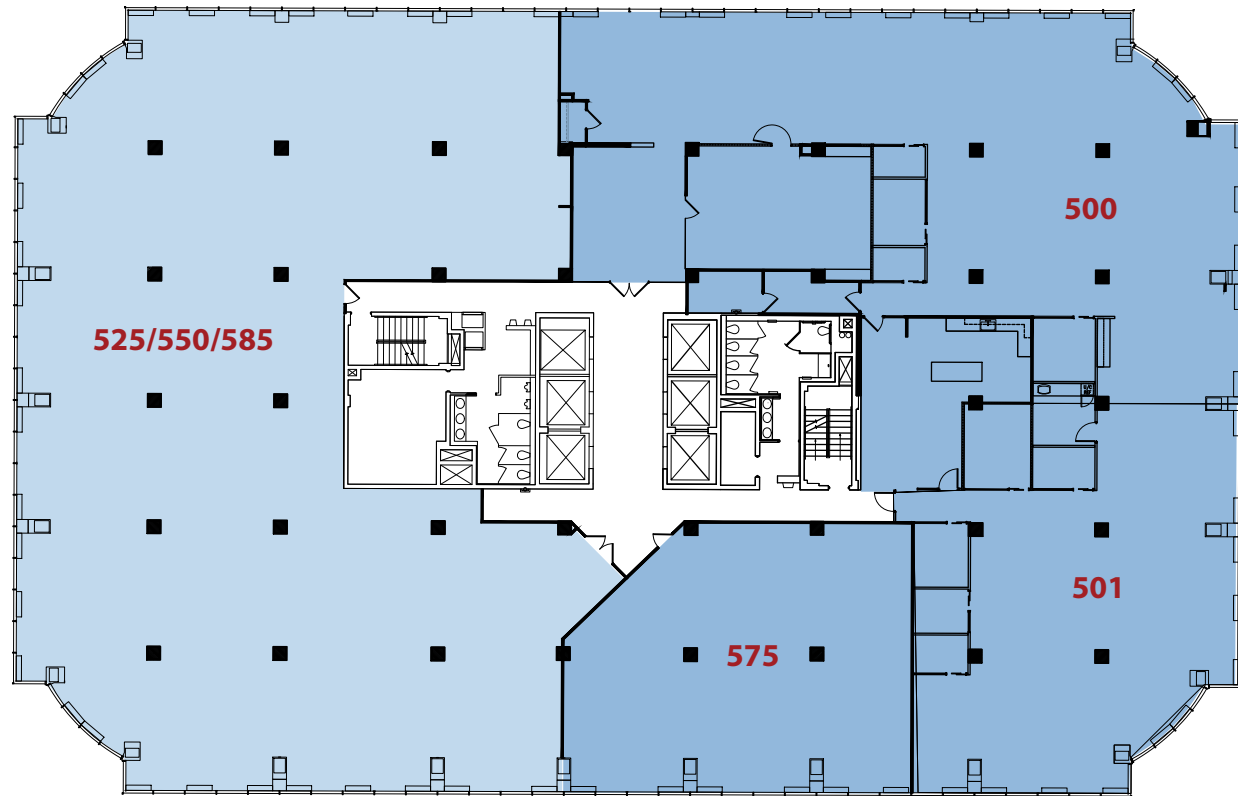
5TH FLOOR

CONTIGUOUS - 24,245 SF

SUITES 525/550/585 - 11,060 SF
(AVAILABLE 2/2026)

SUITES 500/501/575 - 13,185 SF
(AVAILABLE 4/2026)

CONTIGUOUS with 4TH FLOOR
33,854 SF



8180

Greensboro Drive



GREENSBORO PARK

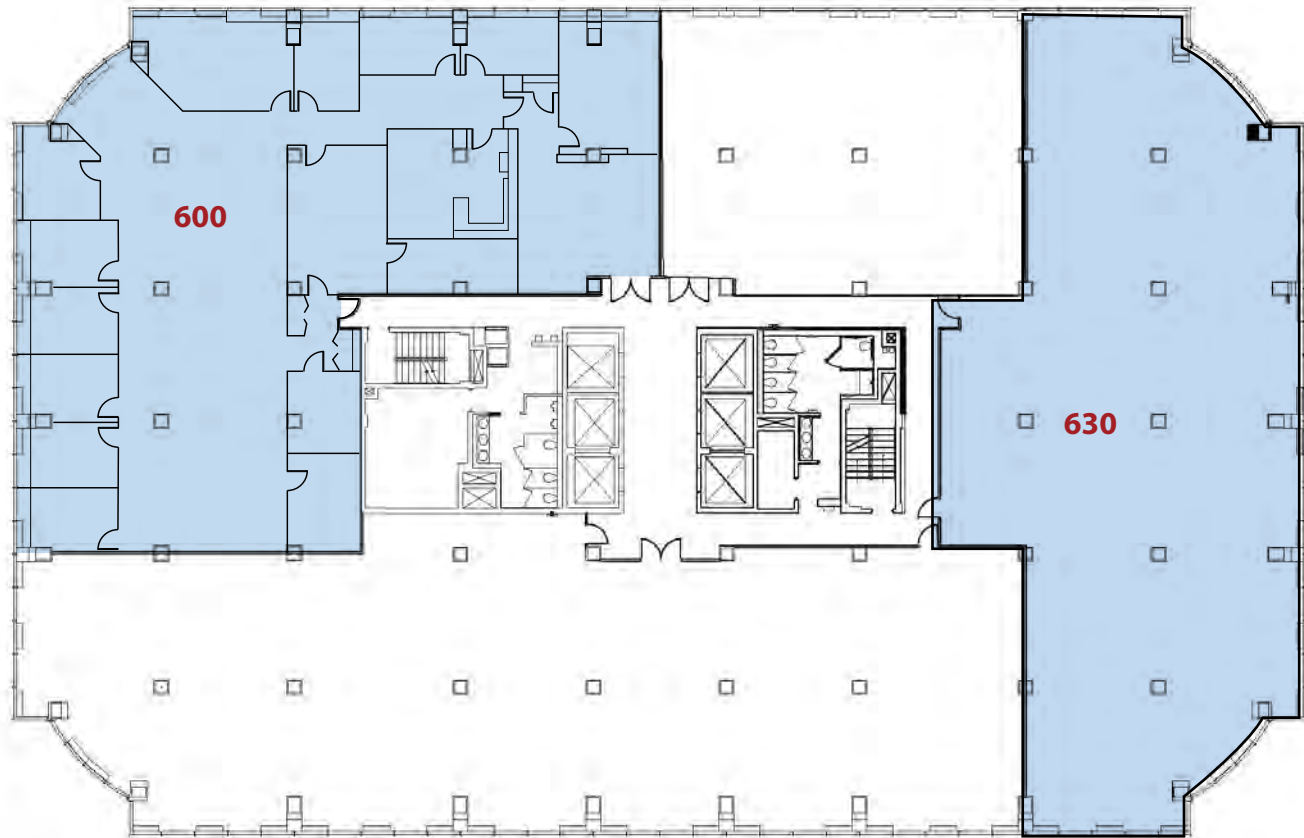
6TH FLOOR



**PLUG AND PLAY
FULLY FURNISHED**

SUITE 600 - 7,182 SF

SUITE 630 - 6,411 SF



8180

Greensboro Drive

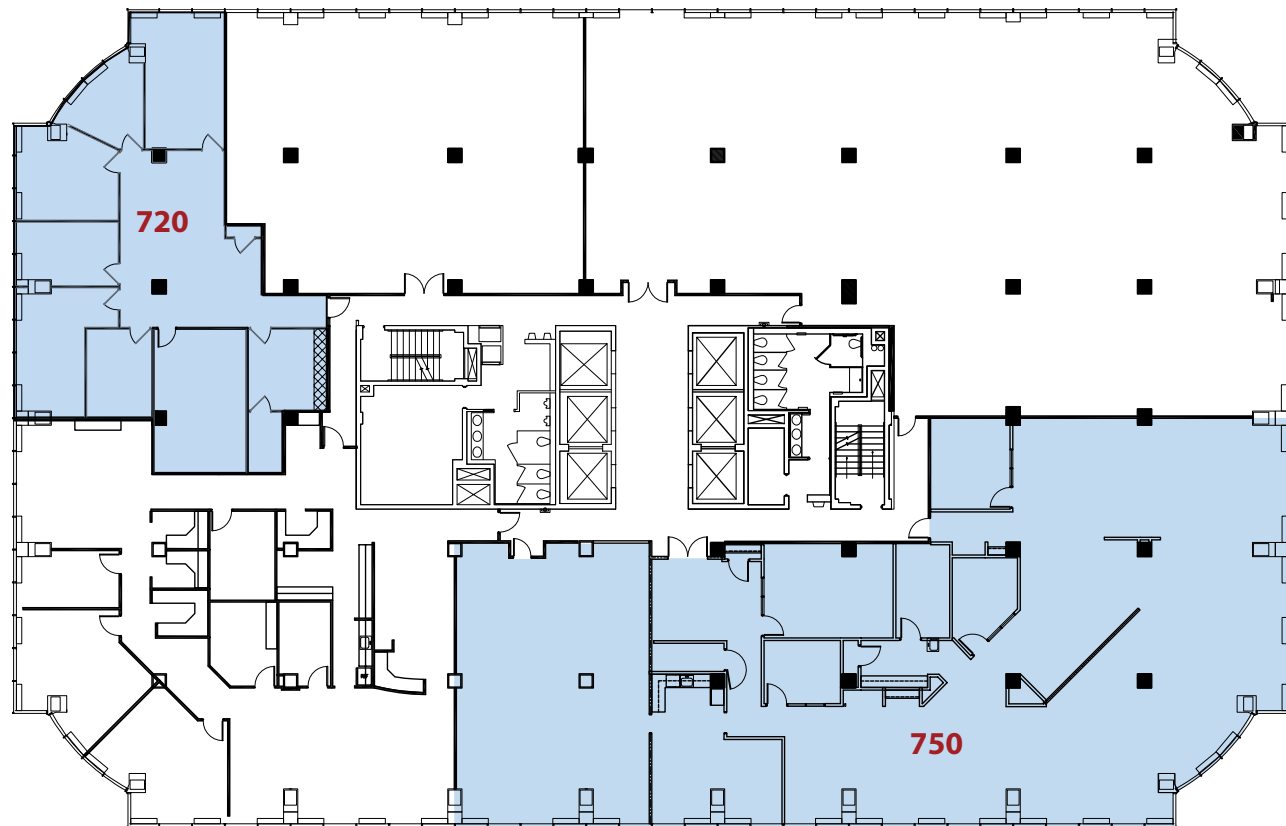


GREENSBORO PARK

7TH FLOOR

SUITE 720 - 2,734 SF

SUITE 750 - 7,536 SF
(AVAILABLE 7/2026)

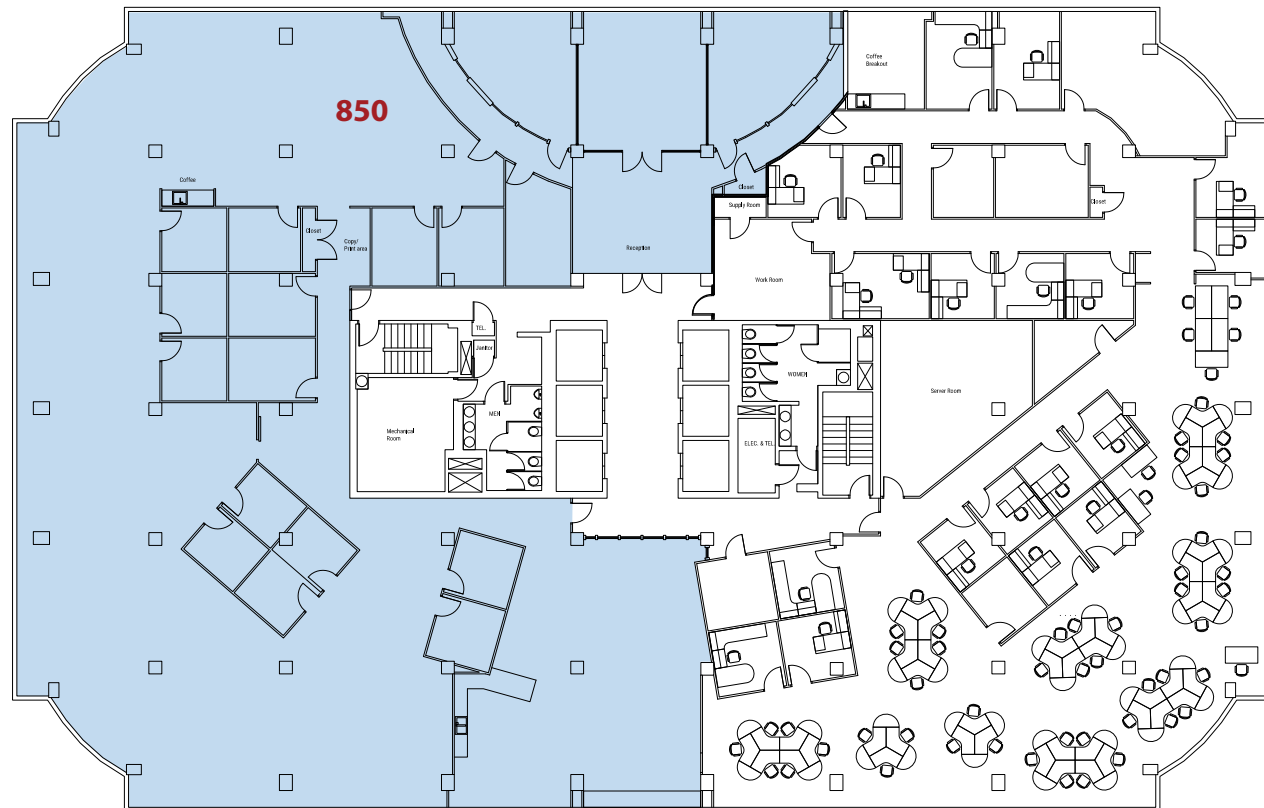




GREENSBORO PARK

8TH FLOOR

SUITE 850 - 13,567 SF



8180

Greensboro Drive



GREENSBORO PARK



9TH FLOOR

SUITE 950 - 3,937 SF



8180

Greensboro Drive



8200



BUILDING AMENITIES



Two Conference Centers with Pre-Function Lounge



Expanded Fitness Center with showers and lockers

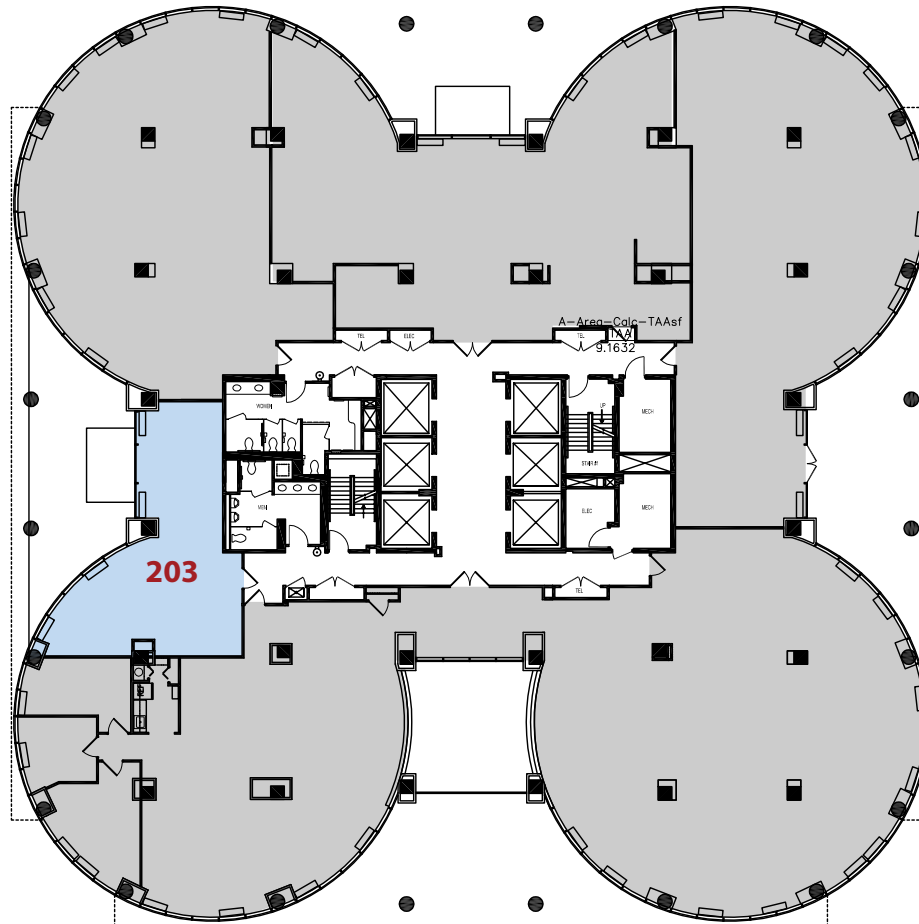
FLOOR	AVAILABILITY
2nd	203 - 945 SF
3rd	<u>CONTIGUOUS</u> - 6,105 SF 302 - 2,678 SF 350 - 3,427 SF
4th	401 - 3,867 SF
5th	<u>FRAMEWORK</u> 525 - 4,744 SF - SPEC SUITE
6th	601 - 2,653 SF 650 - 7,990 SF
11th	1175 - 3,372 SF available 1/1/26
12th	Entire Floor - 20,011 SF



GREENSBORO PARK

2ND FLOOR

SUITE 203 - 945 SF



8200

Greensboro Drive



GREENSBORO PARK

3RD FLOOR

CONTIGUOUS - 6,105 SF

SUITE 302 - 2,678 SF

SUITE 350 - 3,427 SF



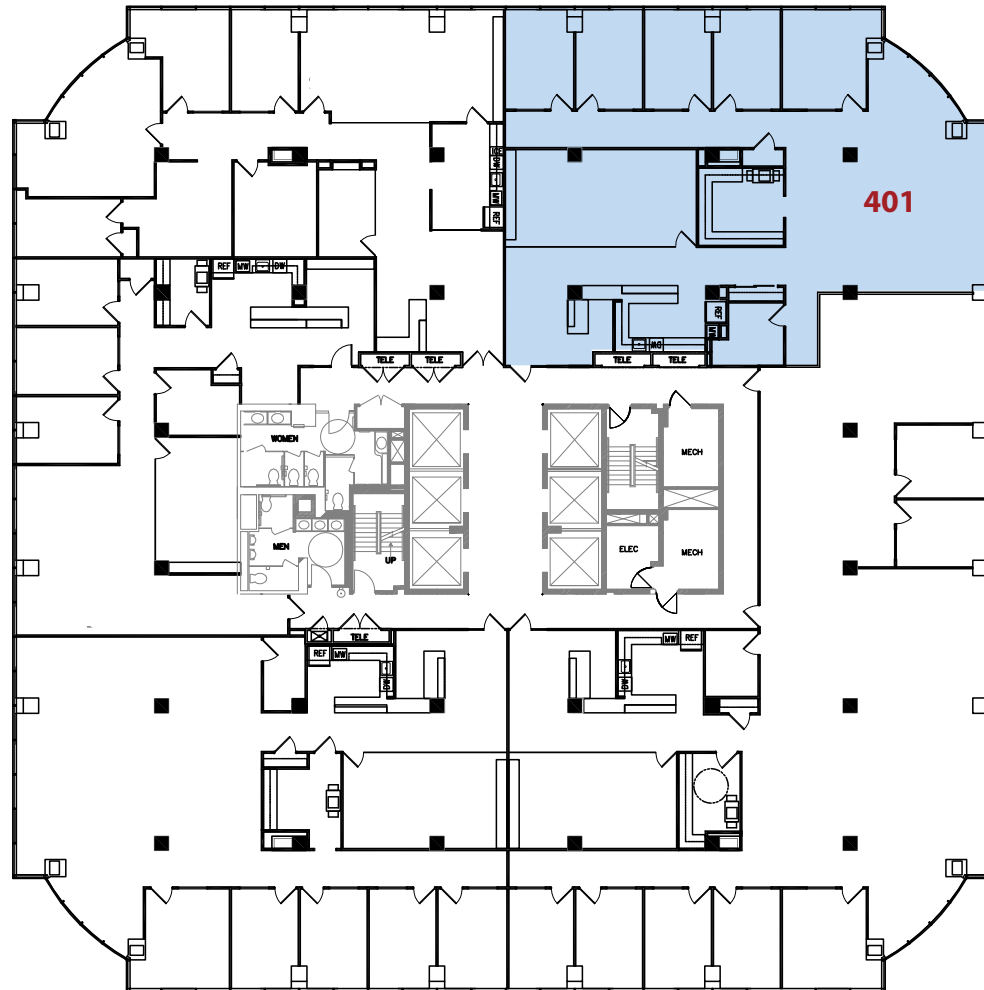
8200

Greensboro Drive



4TH FLOOR

SUITE 401 - 3,867 SF



8200

Greensboro Drive



GREENSBORO PARK

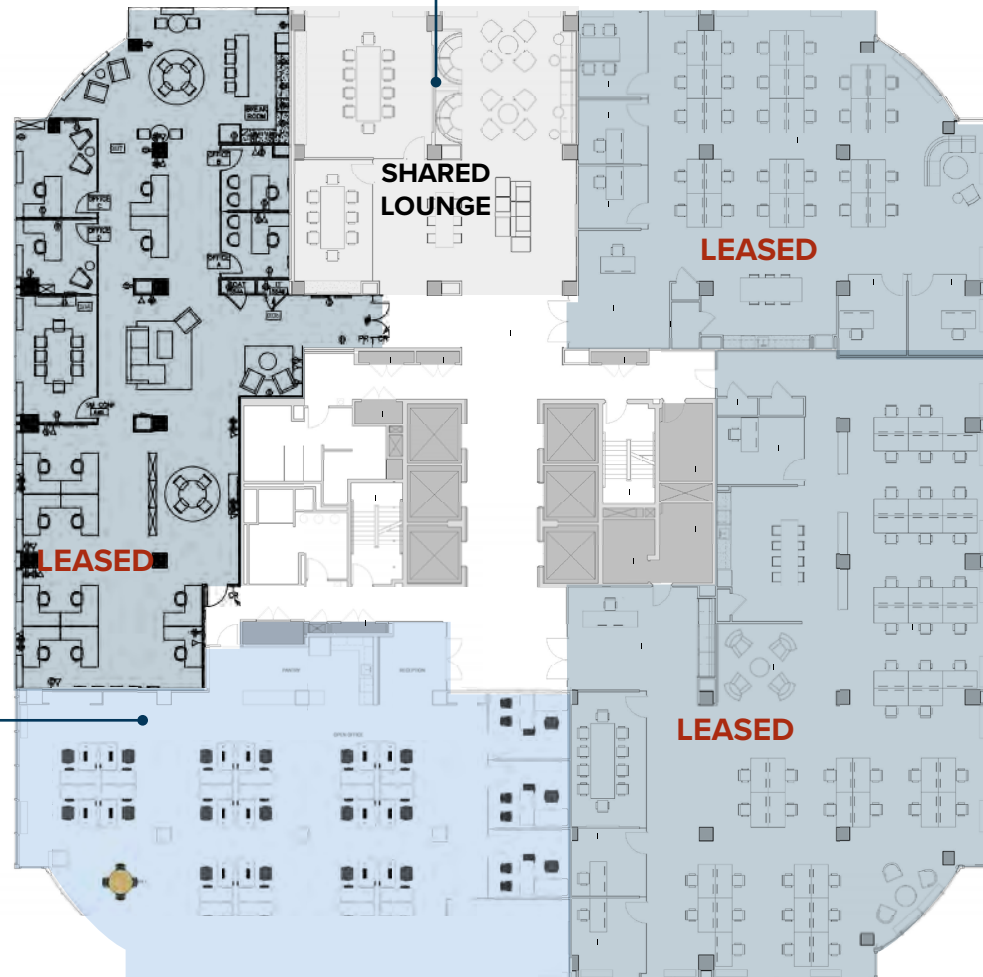
5TH FLOOR

FRAMEWORK LAYOUT



Common Lounge

- Seating/Workstations
- 10 Person Conference
- 8 Person Conference



SPEC SUITE 525

4,744 SF

- 20 Workstations
- 1 Conference Room
- 2 Huddle Areas
- 3 Offices
- Kitchen
- Reception
- Total Seats=25

*Suite furniture configurations are hypothetical



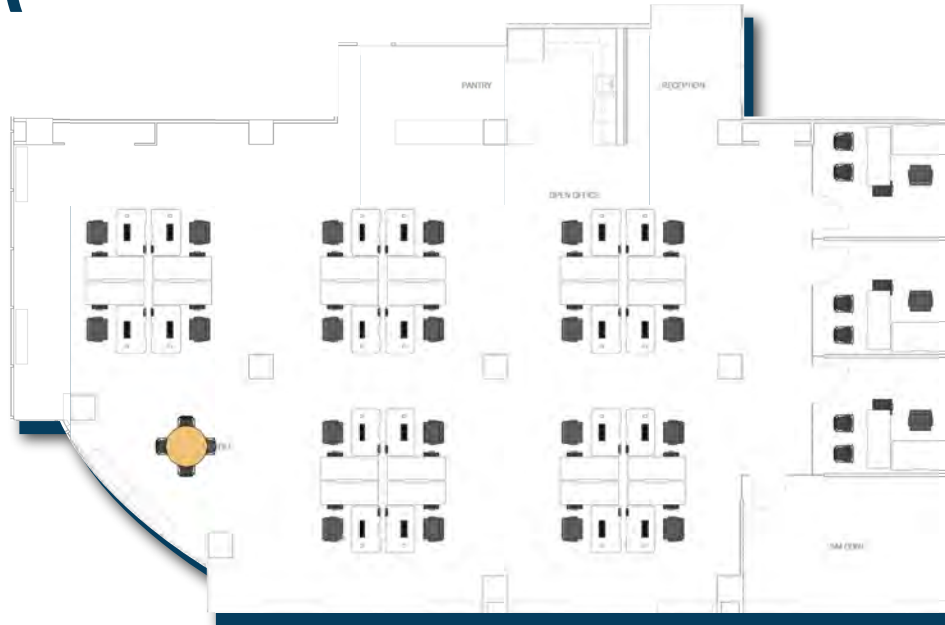
GREENSBORO PARK

5TH FLOOR

FURNISHED
BY VARI

SPEC SUITE 525 4,744 SF

- 29 Workstations
- 1 Conference Room
- 2 Huddle Areas
- 3 Offices
- Kitchen
- Reception
- Total Seats=33



WORK

- Unique Office Suites
- Creative Design



FLEX

- Fitted with or without workstations



MEET

- Shared conferencing
- Collaborative spaces



GROW

- Efficient planning
- Flexible lease terms



8200

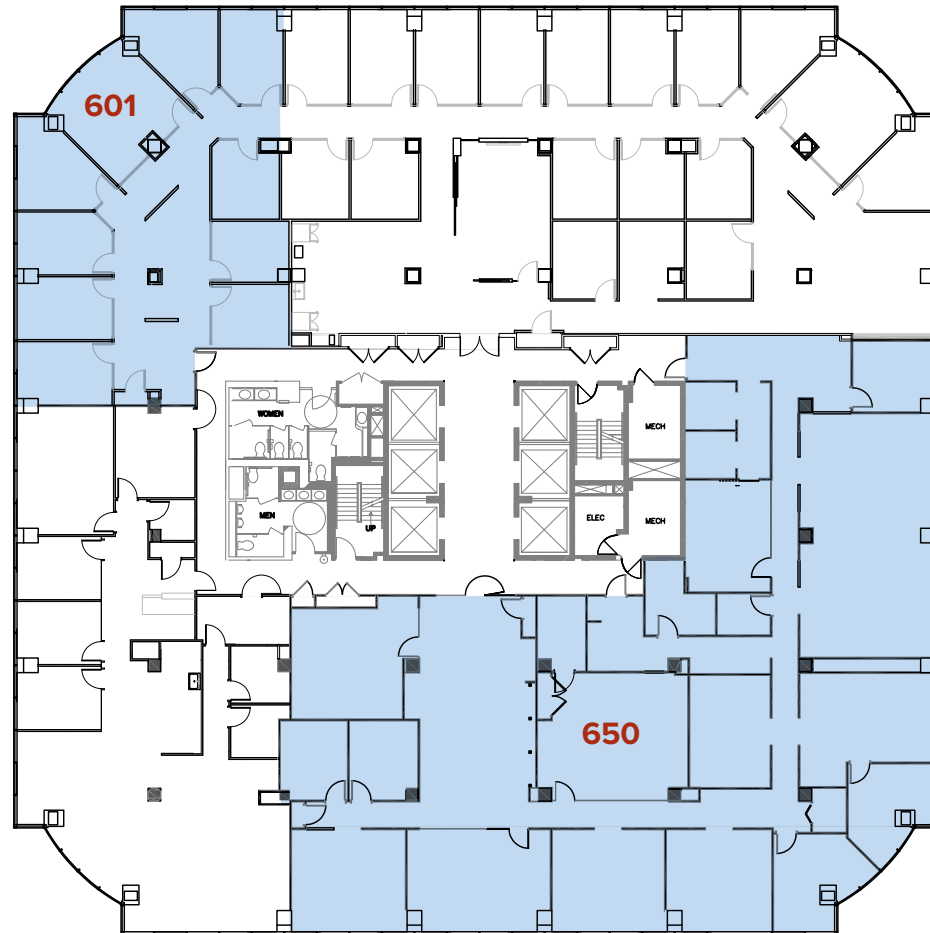
Greensboro Drive



GREENSBORO PARK

6TH FLOOR

SUITE 601 - 2,653 SF
SUITE 650 - 7,990 SF



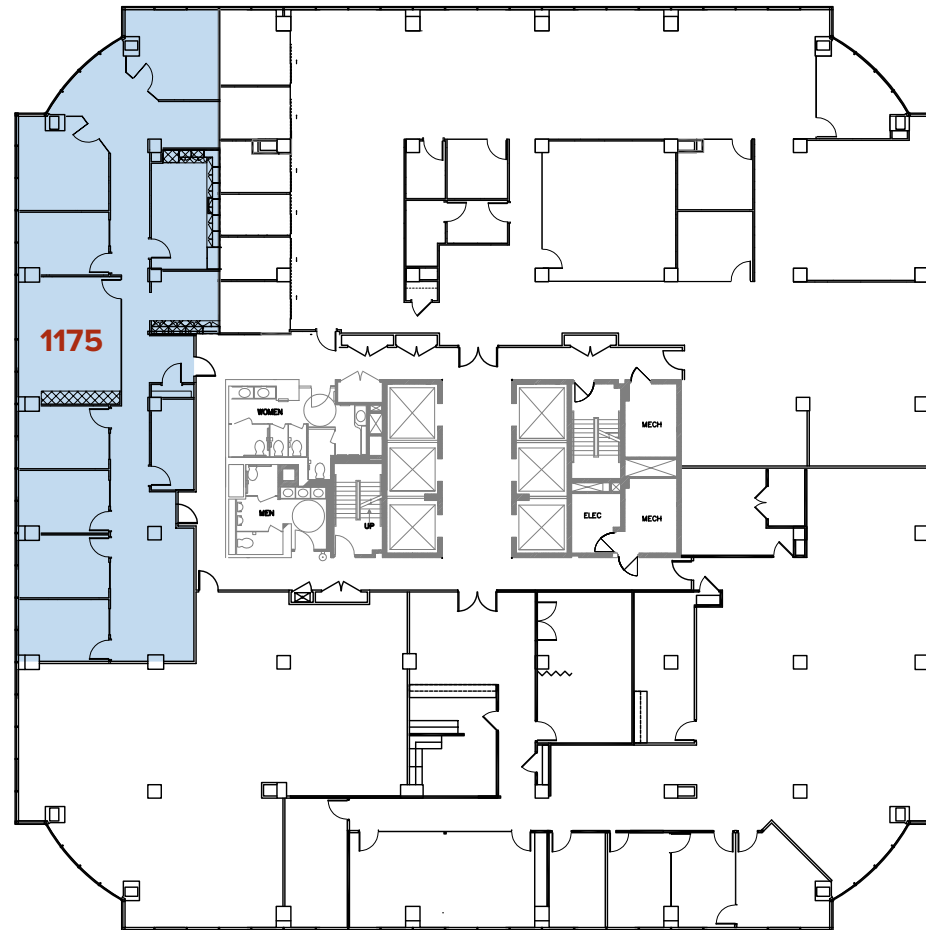
8200
Greensboro Drive



GREENSBORO PARK

11TH FLOOR

SUITE 1175 - 3,372 SF
(AVAILABLE 1/2026)



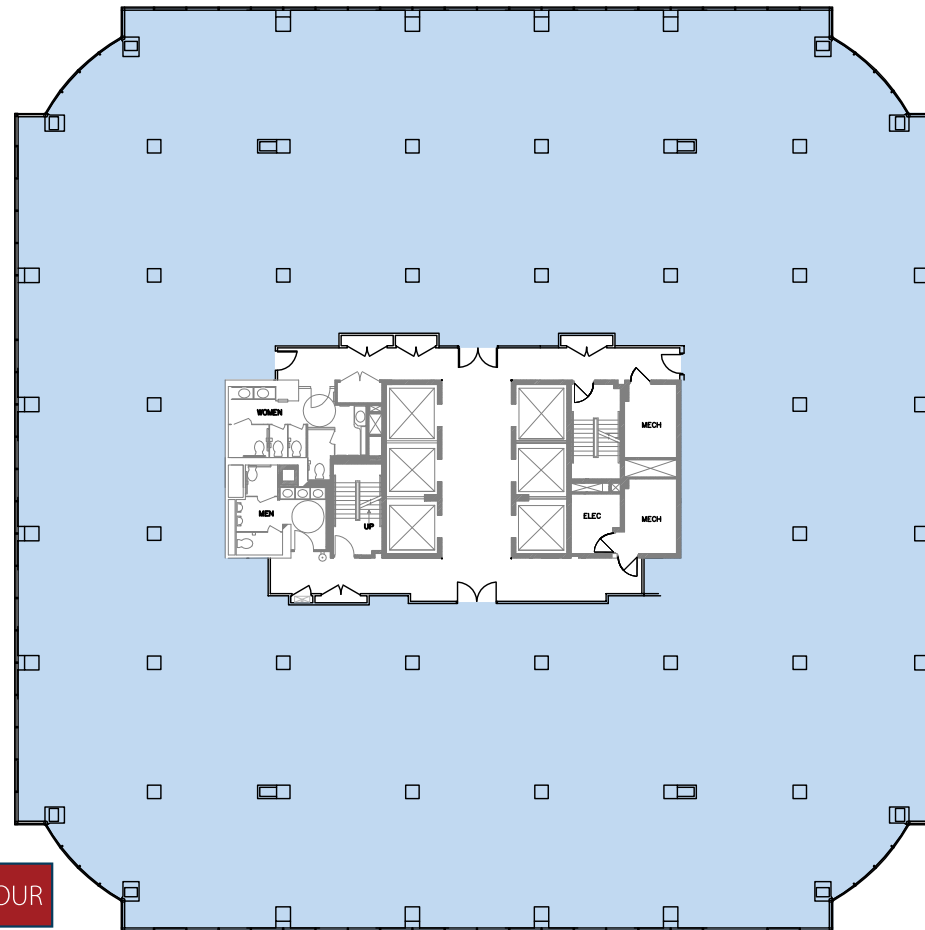
8200
Greensboro Drive



GREENSBORO PARK

12TH FLOOR

ENTIRE FLOOR - 20,011 SF



8200
Greensboro Drive



GREENSBORO PARK

Nick Gregorios

Principal
703.752.4922
nicholas.gregorios@avisonyoung.com

Peter Berk

Principal
703.752.4920
peter.berk@avisonyoung.com

Wesley Preuss

Principal
202.644.8691
welsey.preuss@avisonyoung.com

Owned by:

VELOCIS

altus
REALTY

AVISON
YOUNG