



ELLIOT PARK

516 S 10th Street ♦ Minneapolis, MN 55404



- ◆ Year Built: 1968
- ◆ Warehouse Building Size: 1,824 SF
Land Size: .12 AC
- ◆ Zoned: DT1 Downtown Center District
- ◆ One Drive In 12'x12'
10 On-site Parking Stalls
- ◆ Sale Price: Negotiable
- ◆ Adjacent to 917 5th Avenue S. with easy access to 10th Street
- ◆ Convenient access to 35W, I-94, downtown and public transit
- ◆ Close proximity to US Bank Stadium and multiple amenities

FOR SALE

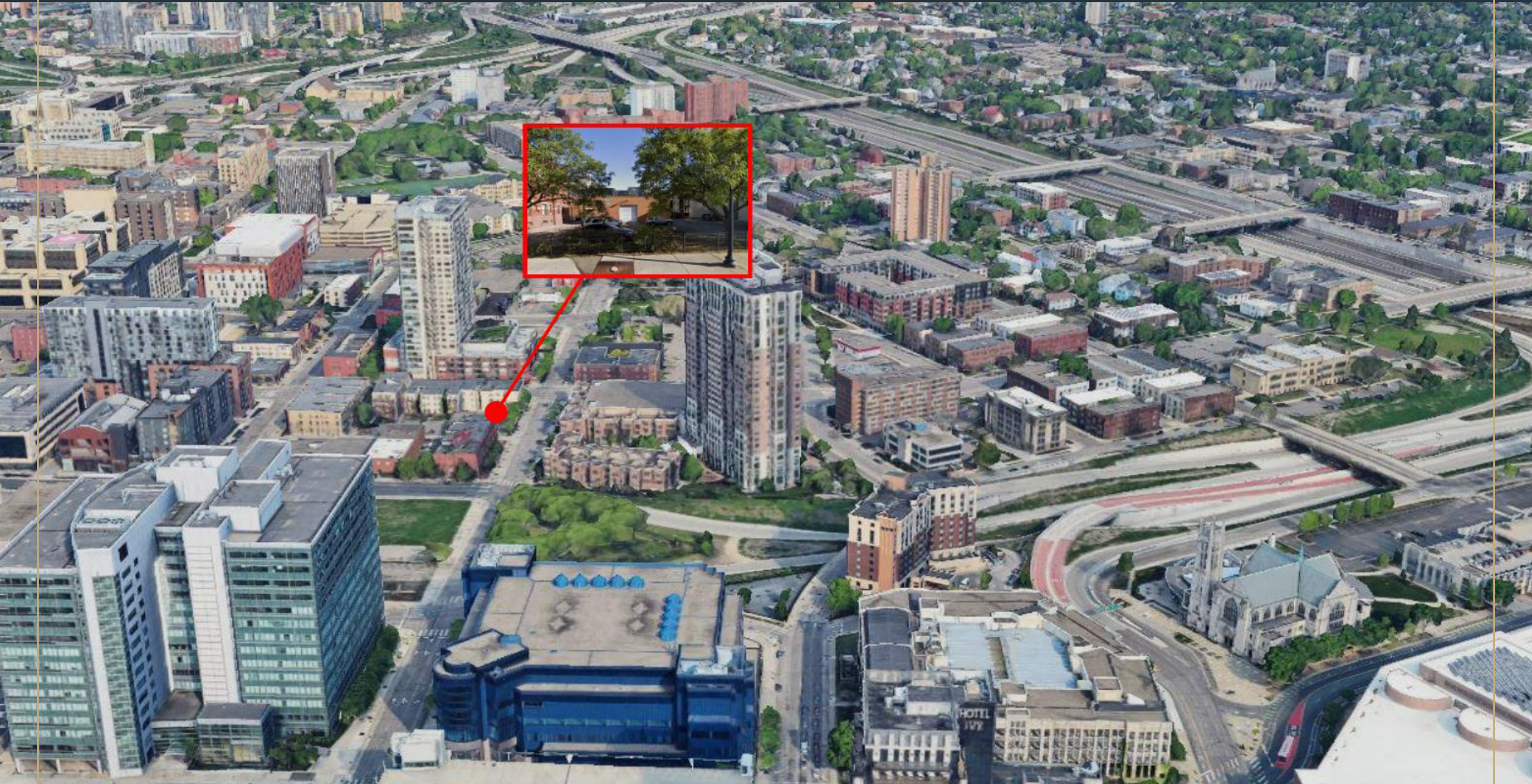
ESTD  1983
FRAUENSHUH
COMMERCIAL REAL ESTATE

BRITT PLEC
(651) 401-2714
britt.plec@frauenshuh.com

ELLIOT PARK ♦ FOR SALE
516 S 10th Street ♦ Minneapolis, MN



ELLIOT PARK ♦ FOR SALE ♦ MAP
516 S 10th Street ♦ Minneapolis, MN



FRAUENSHUH
COMMERCIAL REAL ESTATE

BRITT PLEC
(651) 401-2714
britt.plec@frauenshuh.com



ELLIOT PARK

917 5th Avenue S. † Minneapolis, MN 55404



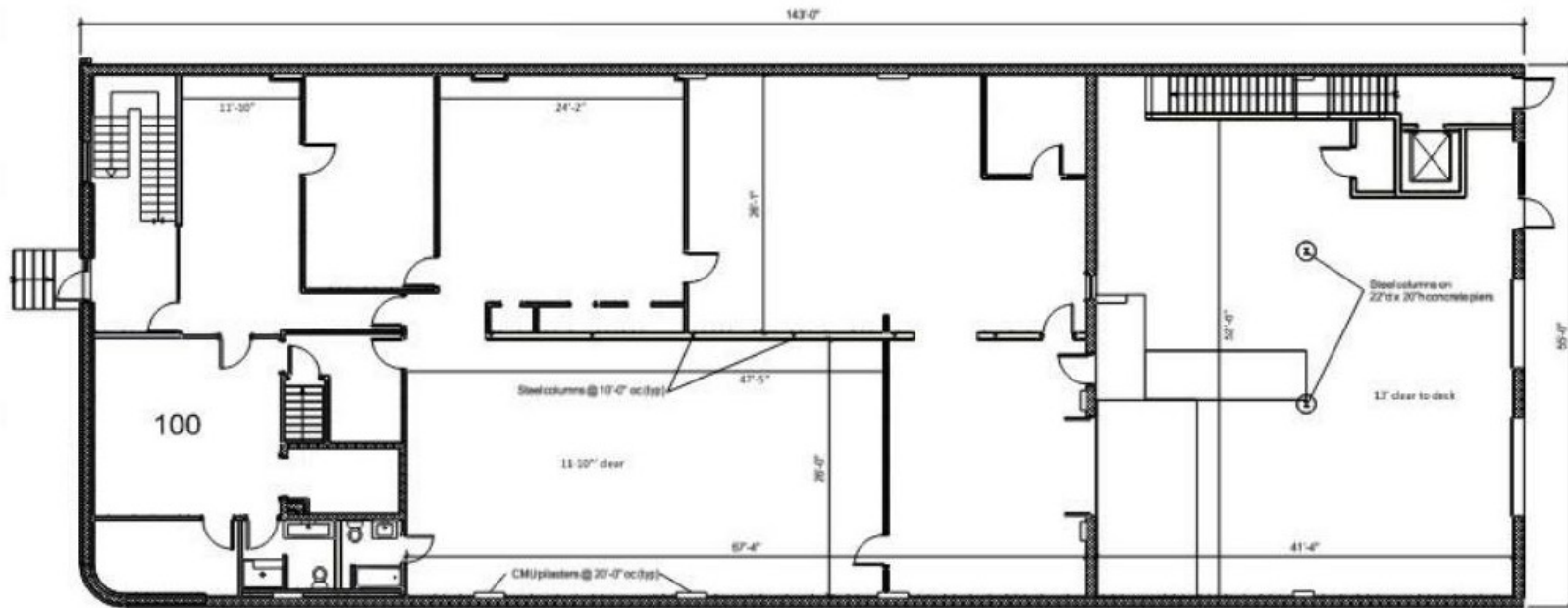
- ◆ Year Built: 1960/Renovated 2010
- ◆ Building Size: 15,750 SF
Land Size: .20 AC
- ◆ Zoned: DT1 Downtown Center District
- ◆ Drive Ins: two 9'x9' overhead doors and one 12'x10' Clear Height 16'
- ◆ Sale Price: Negotiable
- ◆ Single or Multi-tenant Opportunity
- ◆ Easy access to 35W, I-94, downtown and public transit
- ◆ Close proximity to US Bank Stadium and multiple amenities

FOR SALE

ESTD  1983
FRAUENSHUH
COMMERCIAL REAL ESTATE

BRITT PLEC
(651) 401-2714
britt.plec@frauenshuh.com

ELLIOT PARK ♦ FOR SALE ♦ FLOOR PLAN
917 5th Avenue S. ♦ Minneapolis, MN

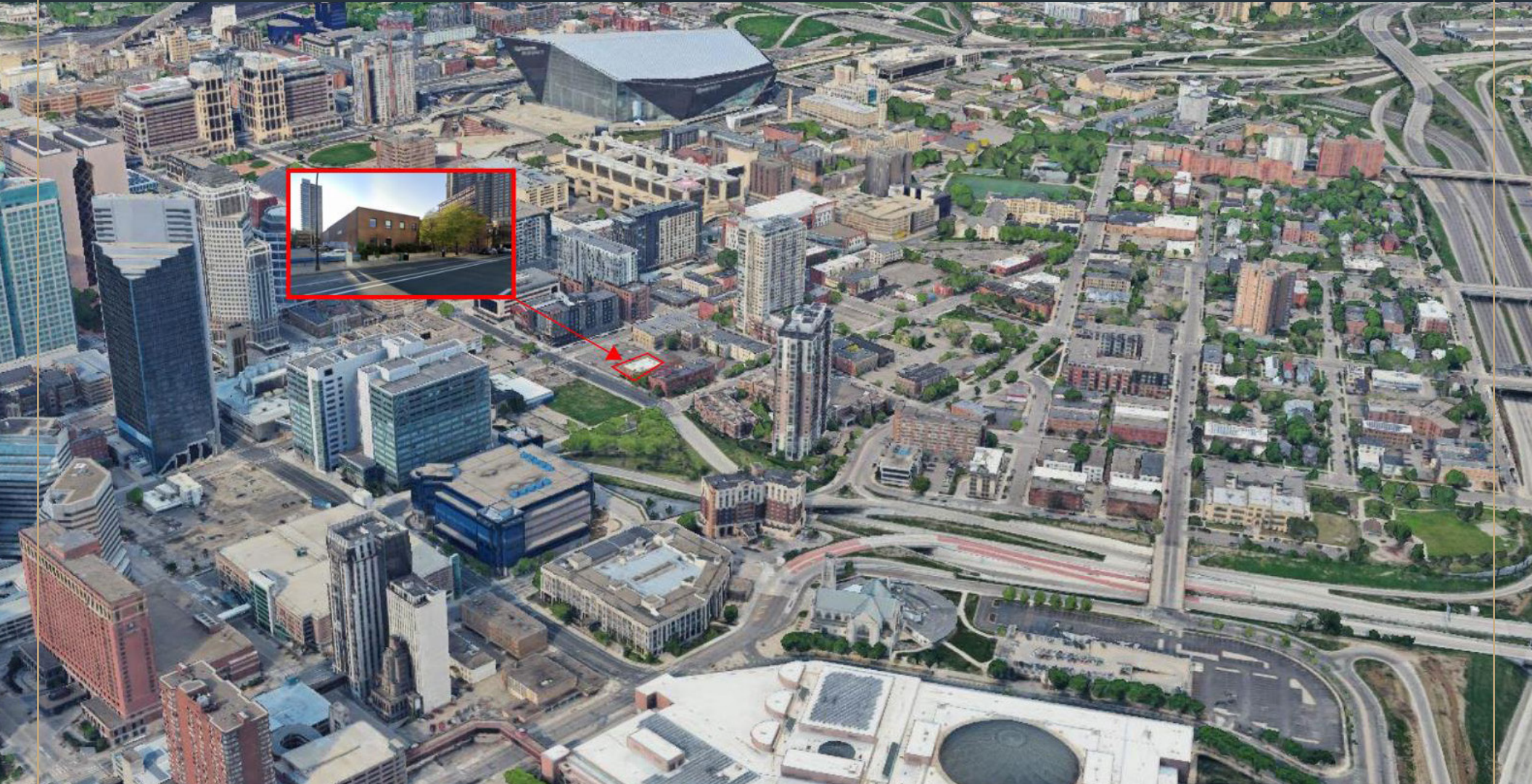


1 Existing/Demo Plan
Scale: 3/16" = 1'-0"

Building Renovations
917 5th Avenue South
Minneapolis, Minnesota
24 December 2015 - BASE DRAWING

Main Level
scale: 3/16" = 1'-0"

ELLIOT PARK ♦ FOR SALE ♦ MAP
917 5th Avenue S. ♦ Minneapolis, MN



FRAUENSHUH
COMMERCIAL REAL ESTATE

BRITT PLEC
(651) 401-2714
britt.plec@frauenshuh.com