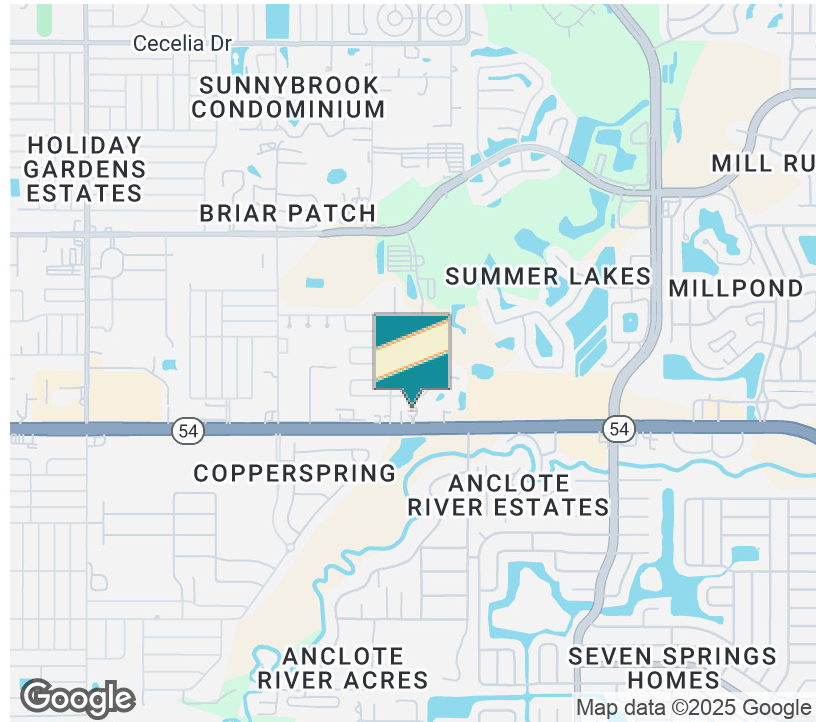




2ND GENERATION RESTAURANT STATE ROAD 54

6813 State Road 54 , New Port Richey , FL 34653

EXECUTIVE SUMMARY



OFFERING SUMMARY

Available SF: 1,680 SF

Lease Rate: \$3,500.00 per month)

PROPERTY OVERVIEW

Showings are by appointment only and can be scheduled with George William, Senior Broker Associate with Grimaldi Commercial Realty Corp

Fully equipped 2nd generation restaurant space that's ready for immediate occupancy. This turn-key opportunity features a complete commercial kitchen with a 10-foot hood, a large commercial oven and stove, and a flat-top grill, offering an ideal setup for a wide range of restaurant concepts. The space also includes a second hood system, providing flexibility for additional cooking equipment such as pizza ovens or even teppanyaki-style cooking in front of guests, making it suitable for both traditional and interactive dining experiences. The kitchen is fully equipped with a three-compartment sink, two hand-washing stations, and two restrooms, providing full compliance for food service operations. The existing layout offers a practical flow between kitchen and dining areas, with ample space for seating and customer service.

This is a true turn-key restaurant space that allows a new operator to open quickly without the high costs or delays of a full buildout. All major infrastructure is already in place—just bring your concept, menu, and team, and start serving customers.

George William

727.482.2818

george@grimaldicommercialrealty.com

The information contained in this offering memorandum has been obtained from sources we believe reliable; however, Grimaldi Commercial Realty Corp. has not verified, and will not verify, any of the information contained herein, nor has Grimaldi Commercial Realty Corp. conducted any investigation regarding these matters and makes no warranty or representation whatsoever regarding the accuracy or completeness of the information provided. All potential buyers and tenants must take appropriate measures to verify all of the information set forth herein.



2ND GENERATION RESTAURANT STATE ROAD 54

6813 State Road 54 , New Port Richey , FL 34653

COMPLETE HIGHLIGHTS

LEASE HIGHLIGHTS

- 2nd Generation Restaurant
- 10 Ft Kitchen Hood System
- Three Compartment sink and two hand washing stations
- Commercial Kitchen equipment including stove, oven, and Flat grills
- Large Pylon Signage
- Frontage on State Road 54, a heavily traveled Road surrounded by large Residential communities



George William

727.482.2818

george@grimaldicommercialrealty.com

The information contained in this offering memorandum has been obtained from sources we believe reliable; however, Grimaldi Commercial Realty Corp. has not verified, and will not verify, any of the information contained herein, nor has Grimaldi Commercial Realty Corp. conducted any investigation regarding these matters and makes no warranty or representation whatsoever regarding the accuracy or completeness of the information provided. All potential buyers and tenants must take appropriate measures to verify all of the information set forth herein.



2ND GENERATION RESTAURANT STATE ROAD 54

6813 State Road 54 , New Port Richey , FL 34653

PROPERTY DESCRIPTION

LOCATION DESCRIPTION

The restaurant is ideally positioned along Florida State Road 54 (SR-54) — the major east-west corridor slicing through the heart of West Pasco County, connecting areas such as US-19 in the west to interior suburban nodes further east. That puts the site squarely in the fast-growing trade-area of the Trinity, Florida community, within reach of both residential neighborhoods and regionally commuting traffic.

The surrounding residential communities are both well-established and actively expanding. Immediately north, east, and south are master-planned communities such as Starkey Ranch, Longleaf, Heritage Springs, and other neighborhoods in the Trinity umbrella (e.g. gated golf communities, family subdivisions, and age-restricted developments). With consistent new home construction, infill development, and expansions of residential parcels, rooftops continue to increase.

Demographically Trinity is an affluent, stable market. As of 2023 the local population was about 19,300 residents, showing growth of around 3.3% year-over-year from 2022. Median household income is strong, at approximately \$113,125. Homeownership is high, and many households are long-term residents, supporting discretionary spending on dining and local amenities. The area also shows moderate diversity, with a portion (about 13.1%) of the population born outside the U.S., and a high citizenship rate.

From a mobility and traffic perspective, improvements and planning reinforce the location's strength. The local transportation agency (Florida Department of Transportation, FDOT) is actively working on intersection improvements at SR-54 and US-41 (SR-45), indicating traffic congestion mitigation is in progress to improve flow of goods, commuters, and local trips. Also, the FDOT provides public traffic count data for SR-54 segments via their traffic-count mapping tool.

Finally, the commercial and retail environment complements the restaurant trade. Nearby retail nodes and power centers along SR-54 and intersecting arterials attract strong daytime and weekend traffic: residents, employees, shoppers, and families all frequent the corridors. The mixed residential base (families, retirees, professionals) gives a steady base of potential customers across breakfast, lunch, dinner, and weekend brunch / social dining.

George William

727.482.2818

george@grimaldicommercialrealty.com

The information contained in this offering memorandum has been obtained from sources we believe reliable; however, Grimaldi Commercial Realty Corp. has not verified, and will not verify, any of the information contained herein, nor has Grimaldi Commercial Realty Corp. conducted any investigation regarding these matters and makes no warranty or representation whatsoever regarding the accuracy or completeness of the information provided. All potential buyers and tenants must take appropriate measures to verify all of the information set forth herein.



2ND GENERATION RESTAURANT STATE ROAD 54

6813 State Road 54 , New Port Richey , FL 34653

PROPERTY DETAILS

Lease Rate	\$3,500.00 PER MONTH
------------	----------------------

LOCATION INFORMATION

Building Name	2ND GENERATION RESTAURANT STATE ROAD 54
Street Address	6813 State Road 54
City, State, Zip	New Port Richey , FL 34653
County	Pasco

BUILDING INFORMATION

Building Size	6,720 SF
---------------	----------

PROPERTY INFORMATION

Property Type	Retail
Property Subtype	Strip Center

PARKING & TRANSPORTATION

George William

727.482.2818

george@grimaldicommercialrealty.com

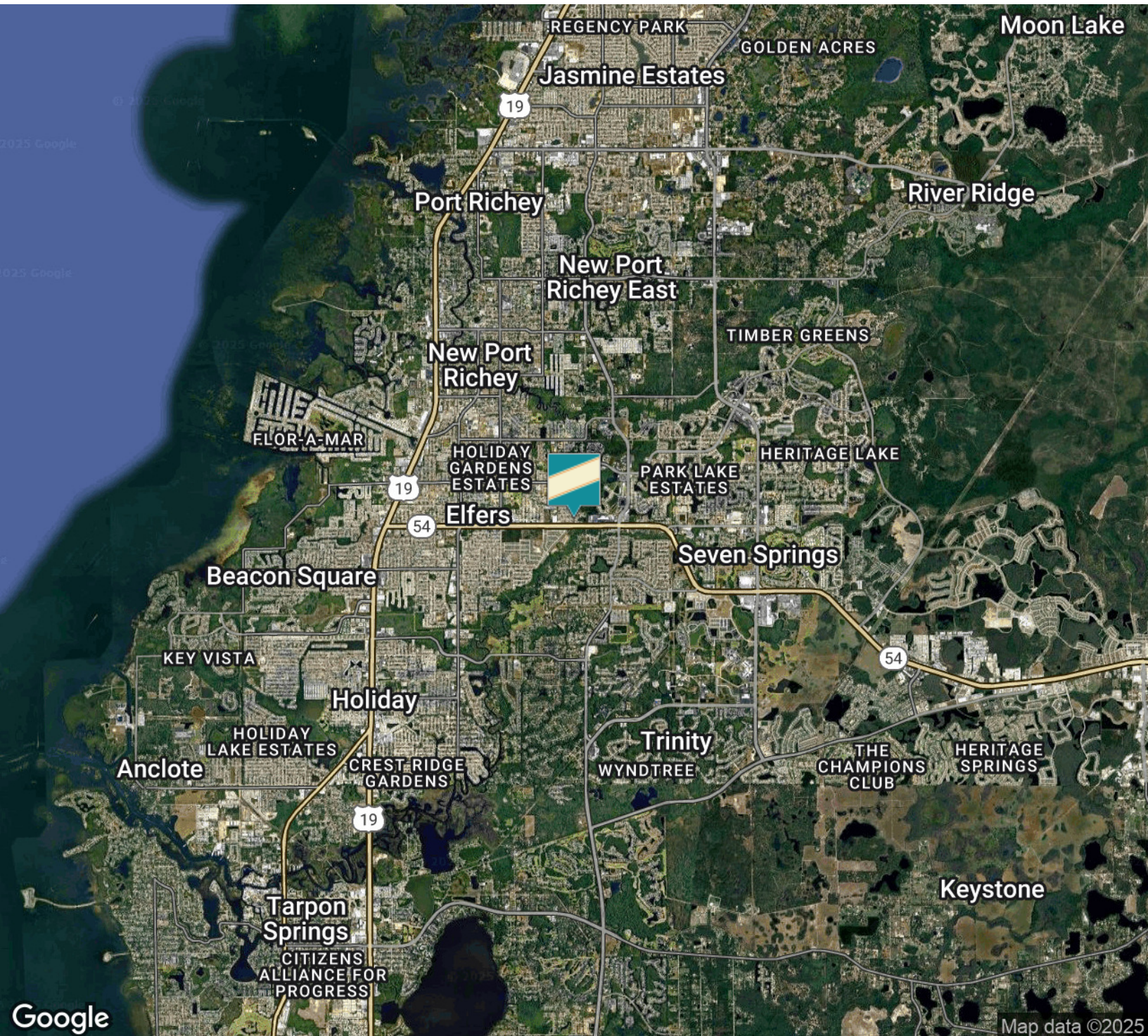
The information contained in this offering memorandum has been obtained from sources we believe reliable; however, Grimaldi Commercial Realty Corp. has not verified, and will not verify, any of the information contained herein, nor has Grimaldi Commercial Realty Corp. conducted any investigation regarding these matters and makes no warranty or representation whatsoever regarding the accuracy or completeness of the information provided. All potential buyers and tenants must take appropriate measures to verify all of the information set forth herein.



2ND GENERATION RESTAURANT STATE ROAD 54

6813 State Road 54 , New Port Richey , FL 34653

LOCATION MAP



George William

727.482.2818

george@grimaldicommercialrealty.com

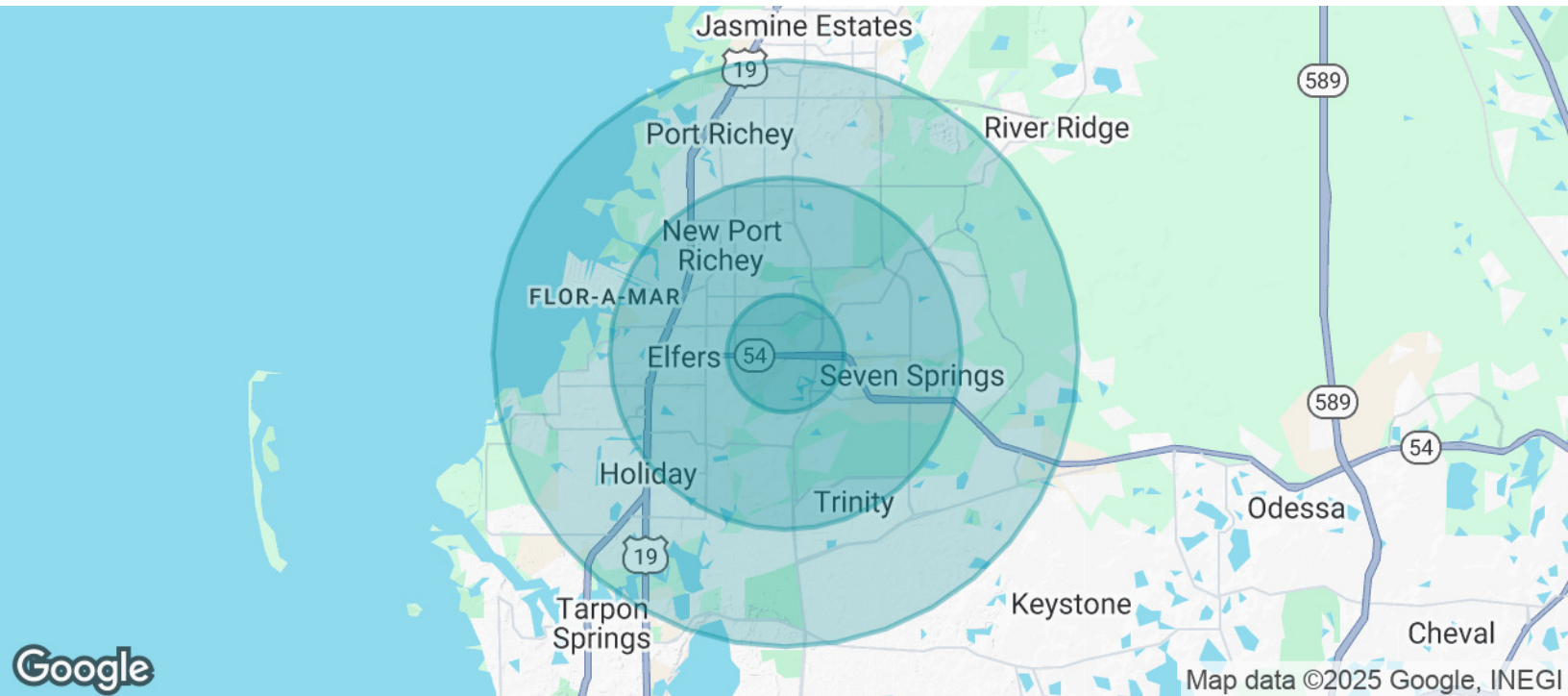
The information contained in this offering memorandum has been obtained from sources we believe reliable; however, Grimaldi Commercial Realty Corp. has not verified, and will not verify, any of the information contained herein, nor has Grimaldi Commercial Realty Corp. conducted any investigation regarding these matters and makes no warranty or representation whatsoever regarding the accuracy or completeness of the information provided. All potential buyers and tenants must take appropriate measures to verify all of the information set forth herein.



2ND GENERATION RESTAURANT STATE ROAD 54

6813 State Road 54 , New Port Richey , FL 34653

DEMOGRAPHICS MAP & REPORT



POPULATION	1 MILE	3 MILES	5 MILES
Total Population	9,854	76,781	151,801
Average Age	42.3	44.6	45.0
Average Age (Male)	38.9	42.0	43.1
Average Age (Female)	45.4	46.4	46.1

HOUSEHOLDS & INCOME	1 MILE	3 MILES	5 MILES
Total Households	4,136	32,827	65,601
# of Persons per HH	2.4	2.3	2.3
Average HH Income	\$50,229	\$51,241	\$52,507
Average House Value	\$158,643	\$193,213	\$202,697

2020 American Community Survey (ACS)

George William

727.482.2818

george@grimaldicommercialrealty.com

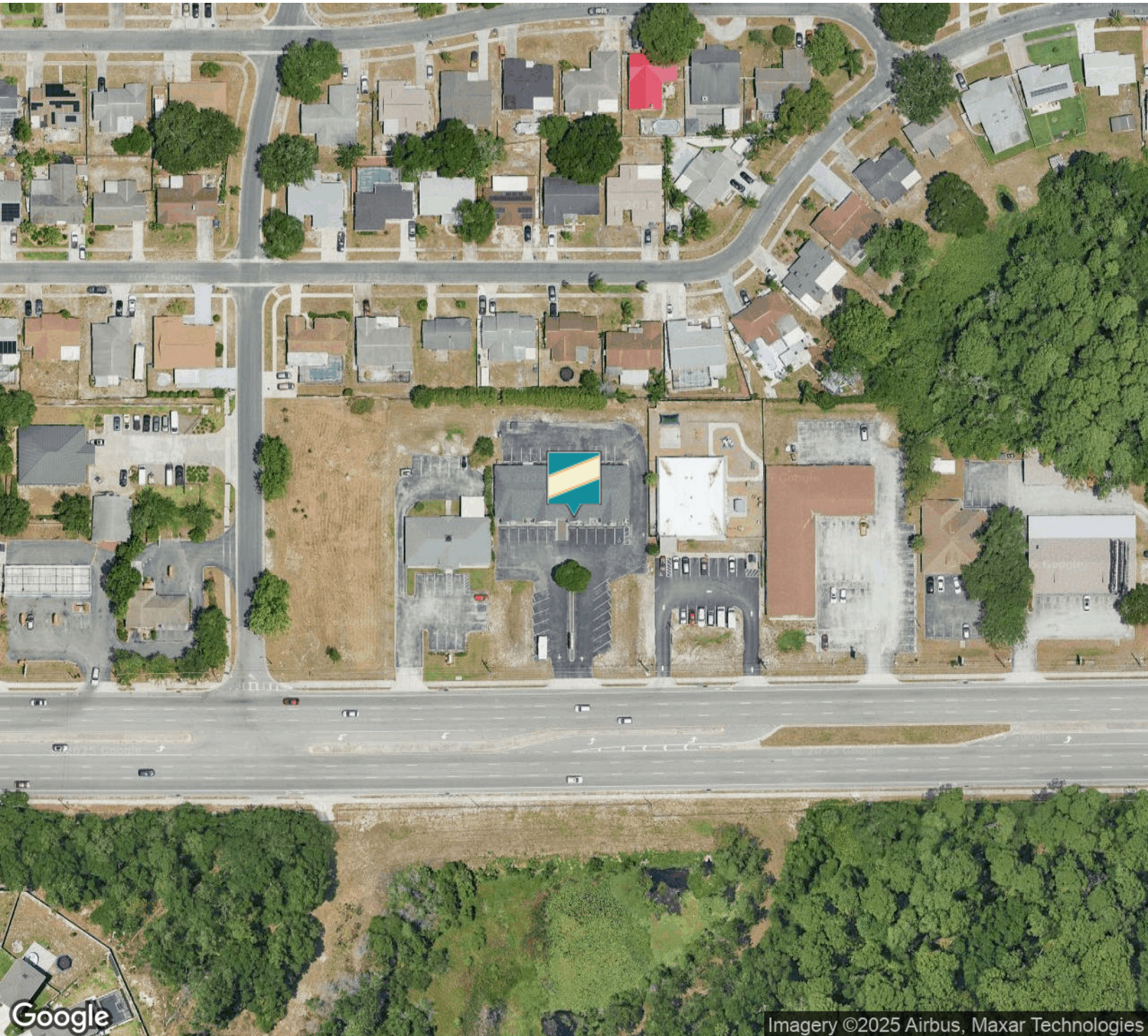
The information contained in this offering memorandum has been obtained from sources we believe reliable; however, Grimaldi Commercial Realty Corp. has not verified, and will not verify, any of the information contained herein, nor has Grimaldi Commercial Realty Corp. conducted any investigation regarding these matters and makes no warranty or representation whatsoever regarding the accuracy or completeness of the information provided. All potential buyers and tenants must take appropriate measures to verify all of the information set forth herein.



2ND GENERATION RESTAURANT STATE ROAD 54

6813 State Road 54 , New Port Richey , FL 34653

AERIAL MAP



George William

727.482.2818

george@grimaldicommercialrealty.com

The information contained in this offering memorandum has been obtained from sources we believe reliable; however, Grimaldi Commercial Realty Corp. has not verified, and will not verify, any of the information contained herein, nor has Grimaldi Commercial Realty Corp. conducted any investigation regarding these matters and makes no warranty or representation whatsoever regarding the accuracy or completeness of the information provided. All potential buyers and tenants must take appropriate measures to verify all of the information set forth herein.



2ND GENERATION RESTAURANT STATE ROAD 54

6813 State Road 54 , New Port Richey , FL 34653

ADVISOR BIO & CONTACT 1

GEORGE WILLIAM

Senior Broker Associate



115 W Bearss Ave
Tampa, FL 33613
T 727.482.2818
george@grimaldicommercialrealty.com

PROFESSIONAL BACKGROUND

Meet George William, your esteemed guide to the dynamic world of commercial real estate in the Tampa Bay area. With a legacy of 10 years in the industry, George is a seasoned Commercial Real Estate Broker renowned for his unwavering commitment to client success and unmatched market insights.

George's journey in real estate began with a passion for helping businesses and investors achieve their goals. Over the years, he has honed his expertise, becoming a trusted advisor to a diverse clientele. George's reputation for transparency, integrity, and personalized service has been the cornerstone of his thriving career. George's deep-rooted connections within the Tampa Bay community and his finger on the pulse of the industry empower his clients to make informed decisions, even in the face of complexity. With an innate ability to identify opportunities that align with his clients' objectives, George has successfully facilitated countless transactions –from leasing prime retail spaces to brokering high-value investment deals. His strategic approach and innovative thinking consistently yield favorable outcomes, making him a sought-after broker in the region.

Beyond his professional accomplishments, George is celebrated for his dedication to ongoing education. He stays ahead of the curve by staying attuned to market shifts, legal nuances, and emerging technologies, ensuring his clients receive the most up-to-date advice. George's commitment to excellence and his genuine interest in helping you achieve your commercial real estate aspirations set him apart. Contact him today to unlock the boundless potential of the Tampa Bay commercial real estate market.

Areas of Expertise:

- Investment and income producing properties
- Sale of businesses
- Retail Sales and Leasing
- Industrial Sales and Leasing
- Self Storage
- Gas Stations and Convenience Stores

George William

727.482.2818
george@grimaldicommercialrealty.com