

FOR LEASE

Harford County, Maryland

FLEX OFFICE SPACE AVAILABLE

WILLIAM PACA INDUSTRIAL PARK | 1309-1311 CONTINENTAL DRIVE | ABINGDON, MARYLAND 21009

AVAILABLE

5,484 - 13,948 sf of flex office space

OCCUPANCY

Immediate

TERM

3 - 5 Years

PARKING RATIO

4 : 1,000 sf

RENTAL RATE

Warehouse: \$9.90 sf NNN

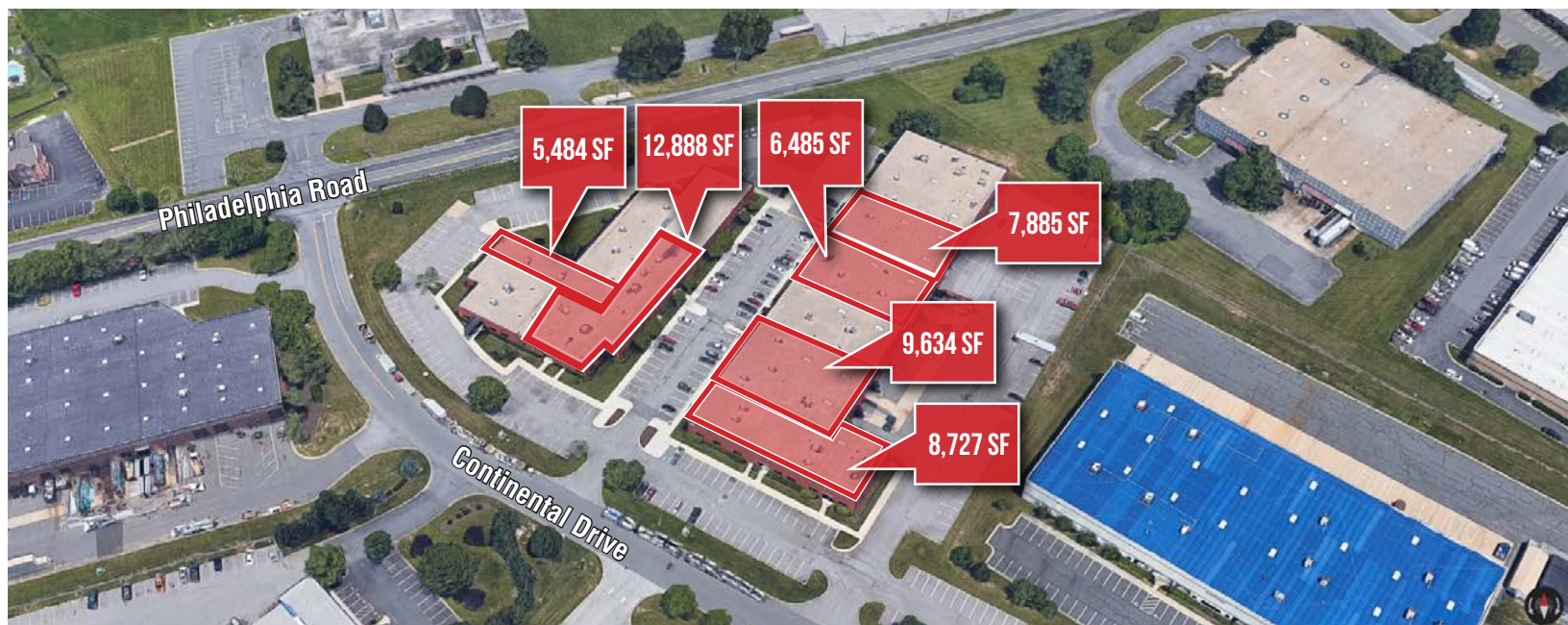
Office: \$12.50 sf NNN

AVAILABLE SUITES

1309 Suite A	8,727 sf
1309 Suite K	9,634 sf
1309 Suite M	6,485 sf
1309 Suite N	7,885 sf
1311 Suite A	12,888 sf
1311 Suite G	5,484 sf (office)

HIGHLIGHTS

- ▶ Suite signage opportunity with Rt. 7 visibility
- ▶ Wonderful window line
- ▶ Efficient layouts with offices, conference room, and open areas
- ▶ Signalized intersection for easy "in and out"
- ▶ Office and warehouse potential
- ▶ Excellent value!

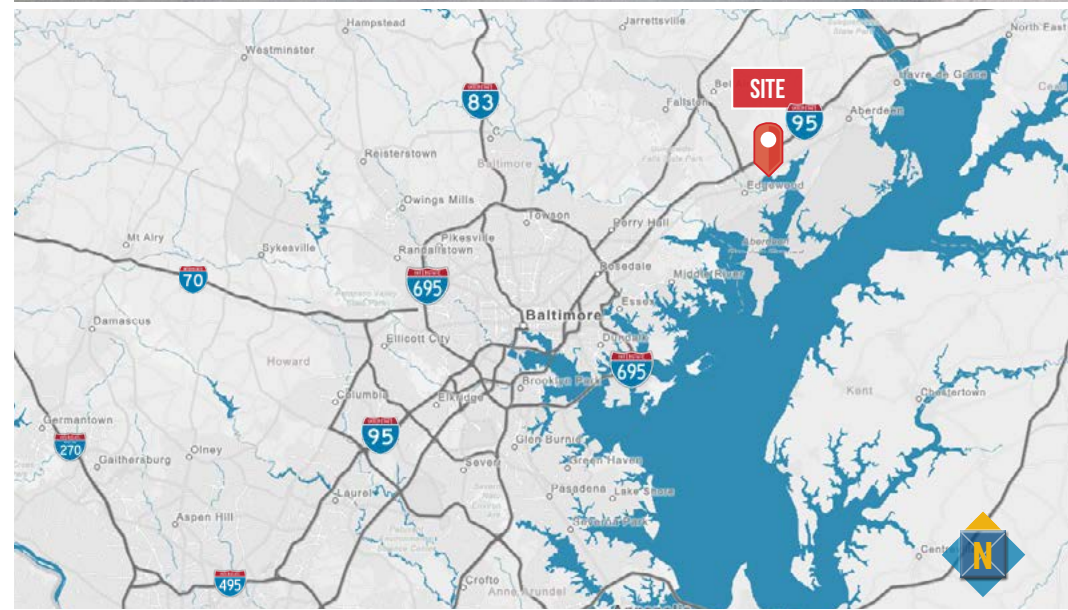
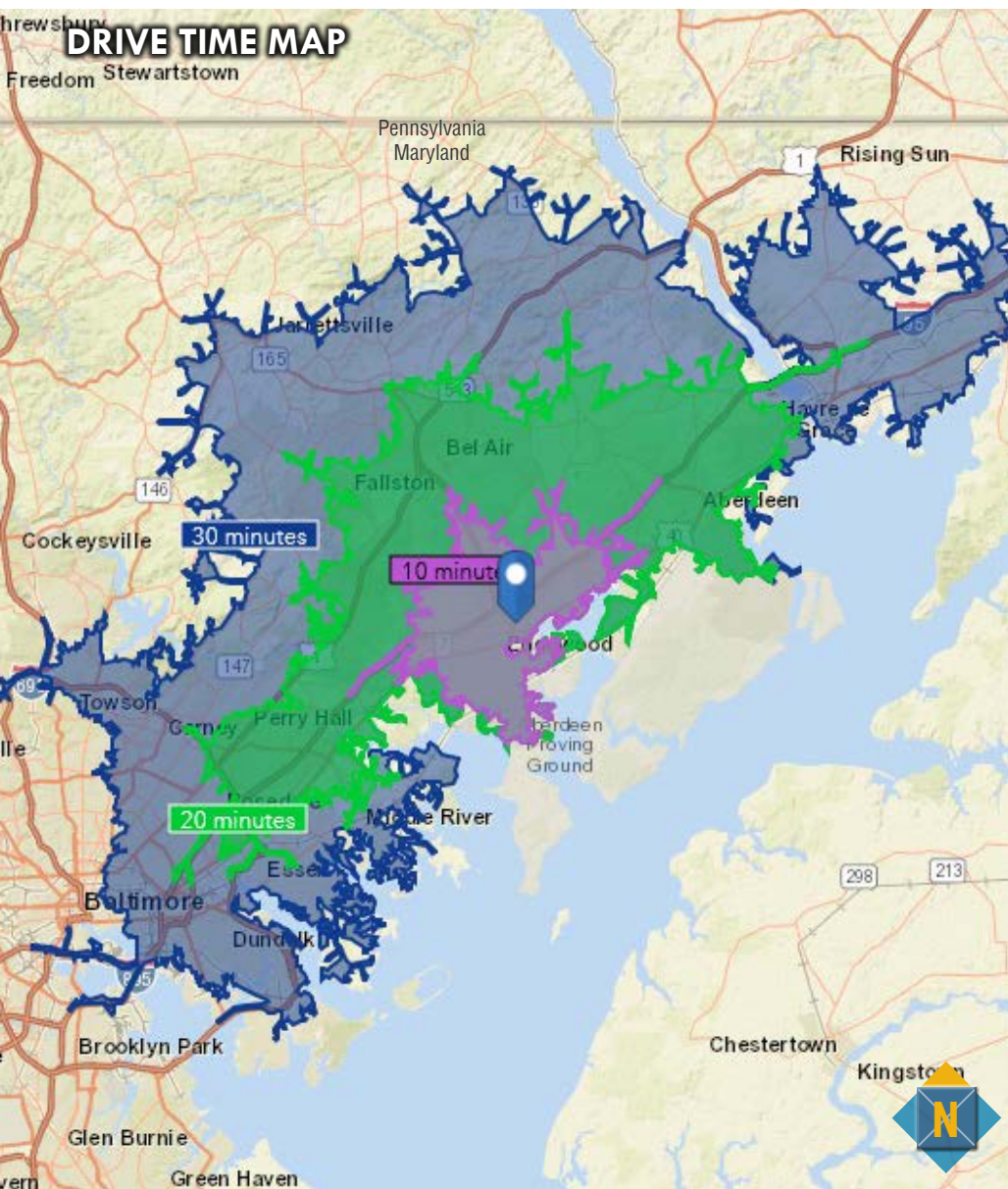


FOR LEASE

Harford County, Maryland

LOCATION/DRIVE TIME/STREET VIEW

WILLIAM PACA INDUSTRIAL PARK | 1309-1311 CONTINENTAL DRIVE | ABINGDON, MARYLAND 21009

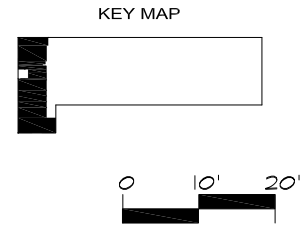
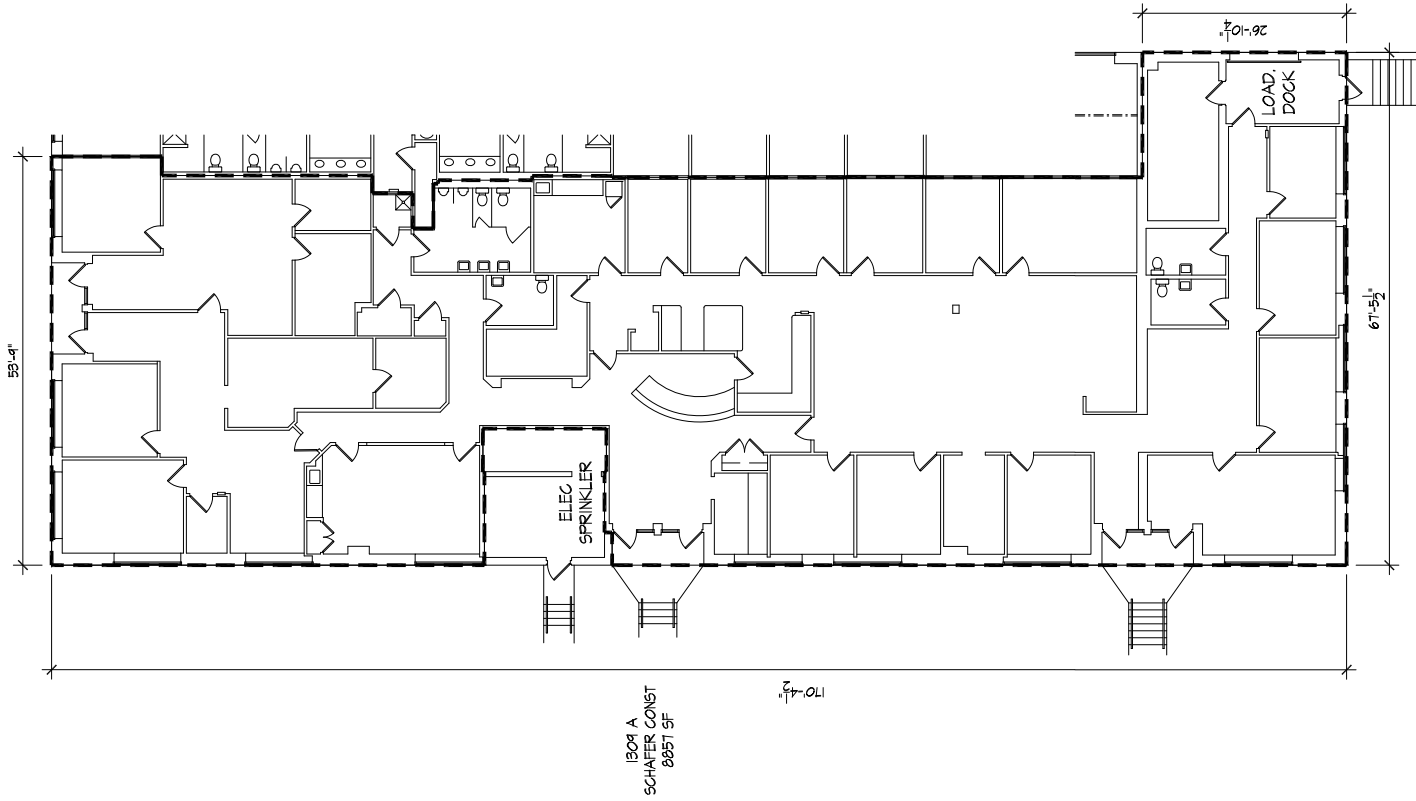


FOR LEASE

Harford County, Maryland

FLOOR PLAN: 1309 - SUITE A

WILLIAM PACA INDUSTRIAL PARK | 1309-1311 CONTINENTAL DRIVE | ABINGDON, MARYLAND 21009



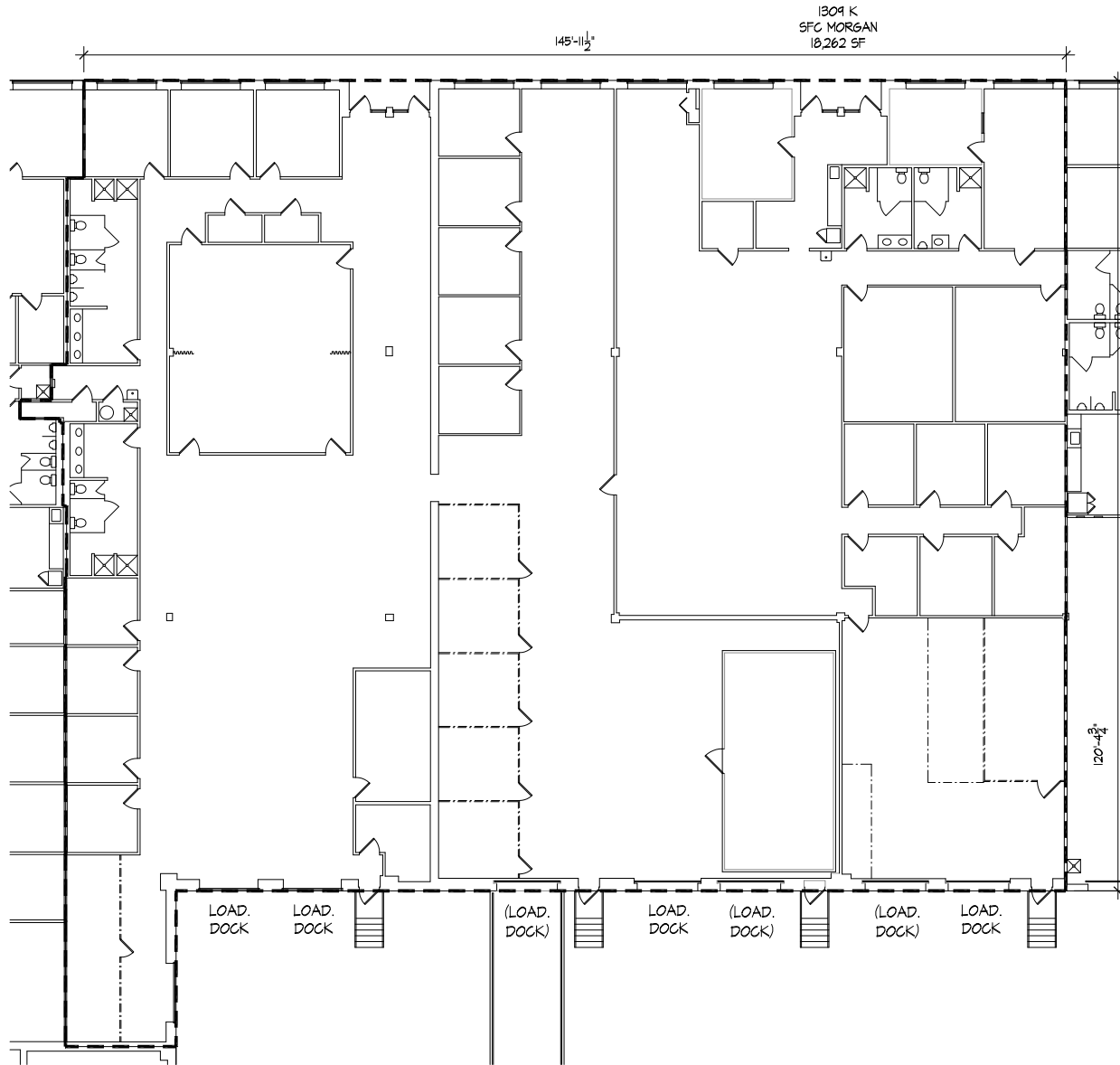
1309 A PACA ABINGDON, MD	
DATE: 9.15.13 DRAWING: SCALE: 13024 1" = 20' SHT SIZE: 8,5 x 11	1309A
Architectural Building Surveys 410 . 466 . 1034	Trisun Financial Group 410 . 653 . 5550

FOR LEASE

Harford County, Maryland

FLOOR PLAN: 1309 - SUITE K

WILLIAM PACA INDUSTRIAL PARK | 1309-1311 CONTINENTAL DRIVE | ABINGDON, MARYLAND 21009



KEY MAP

0 10' 20'

1309 K
PACA
ABINGDON, MD

DATE: 9.15.13
DRAWING: 13024
SCALE: 1" = 20'
SHT SIZE: 8.5 x 11

1309K

Architectural Building Surveys
410.468.1034

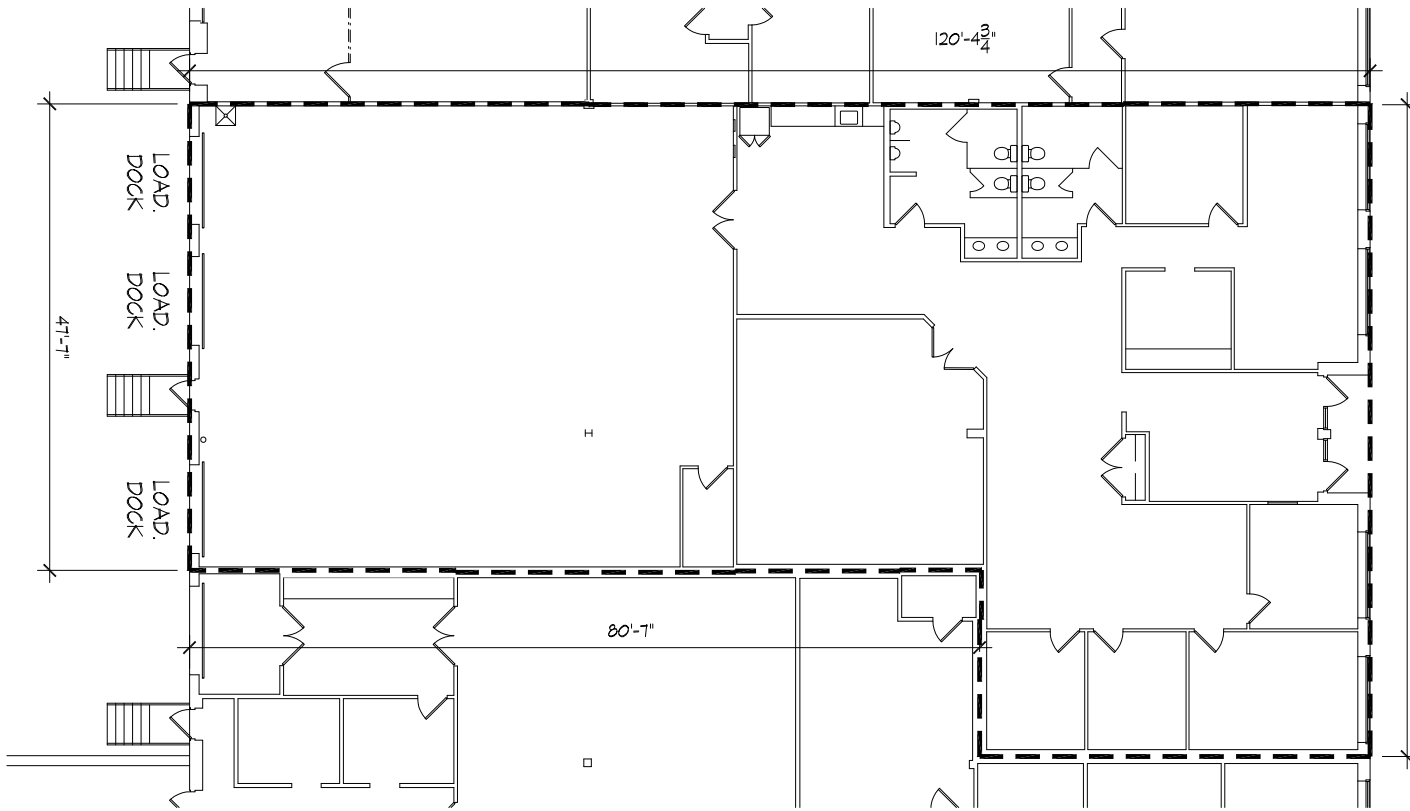
Trisun Financial Group
410.653.5550

FOR LEASE

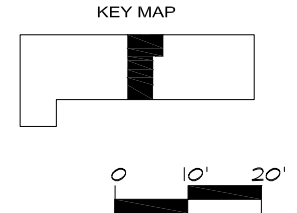
Harford County, Maryland

FLOOR PLAN: 1309 - SUITE M

WILLIAM PACA INDUSTRIAL PARK | 1309-1311 CONTINENTAL DRIVE | ABINGDON, MARYLAND 21009



1309 M
VETERAN CORPUS
6405 SF



1309 M
PACA
ABINGDON, MD

DATE: 9.15.13
DRAWING: 13024
SCALE: 1" = 20'
SHT SIZE: 8.5 x 11

1309M

410.466.1034
Architectural
Building
Surveys

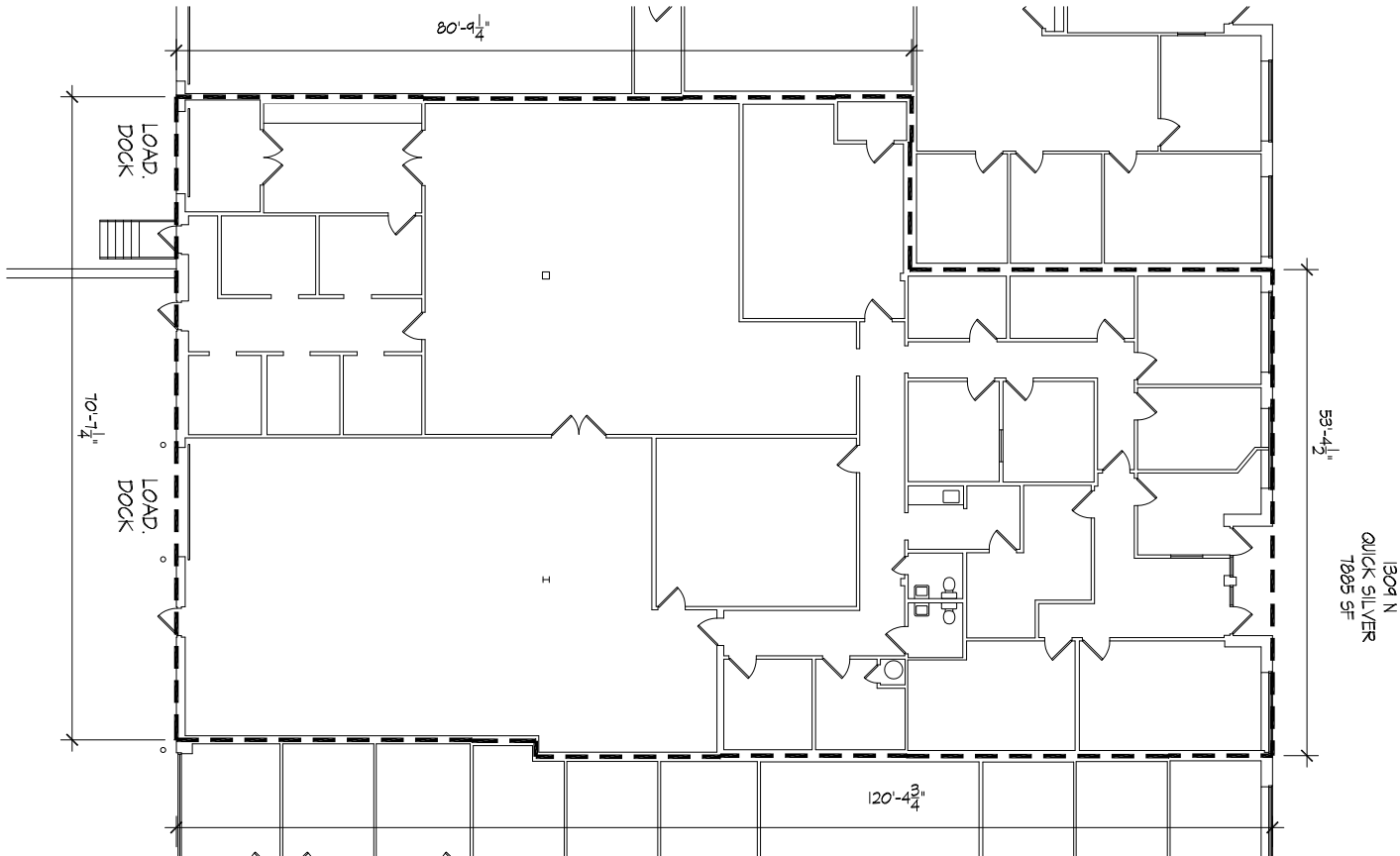
Trisun
Financial
Group
410.653.5550

FOR LEASE

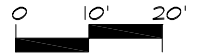
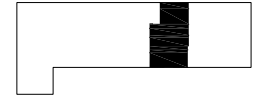
Harford County, Maryland

FLOOR PLAN: 1309 - SUITE N

WILLIAM PACA INDUSTRIAL PARK | 1309-1311 CONTINENTAL DRIVE | ABINGDON, MARYLAND 21009



KEY MAP



1309 N
PACA
ABINGDON, MD

DATE: 9.15.13
DRAWING:
13024
SCALE:
1" = 20'
SHT SIZE:
8.5 x 11

1309N

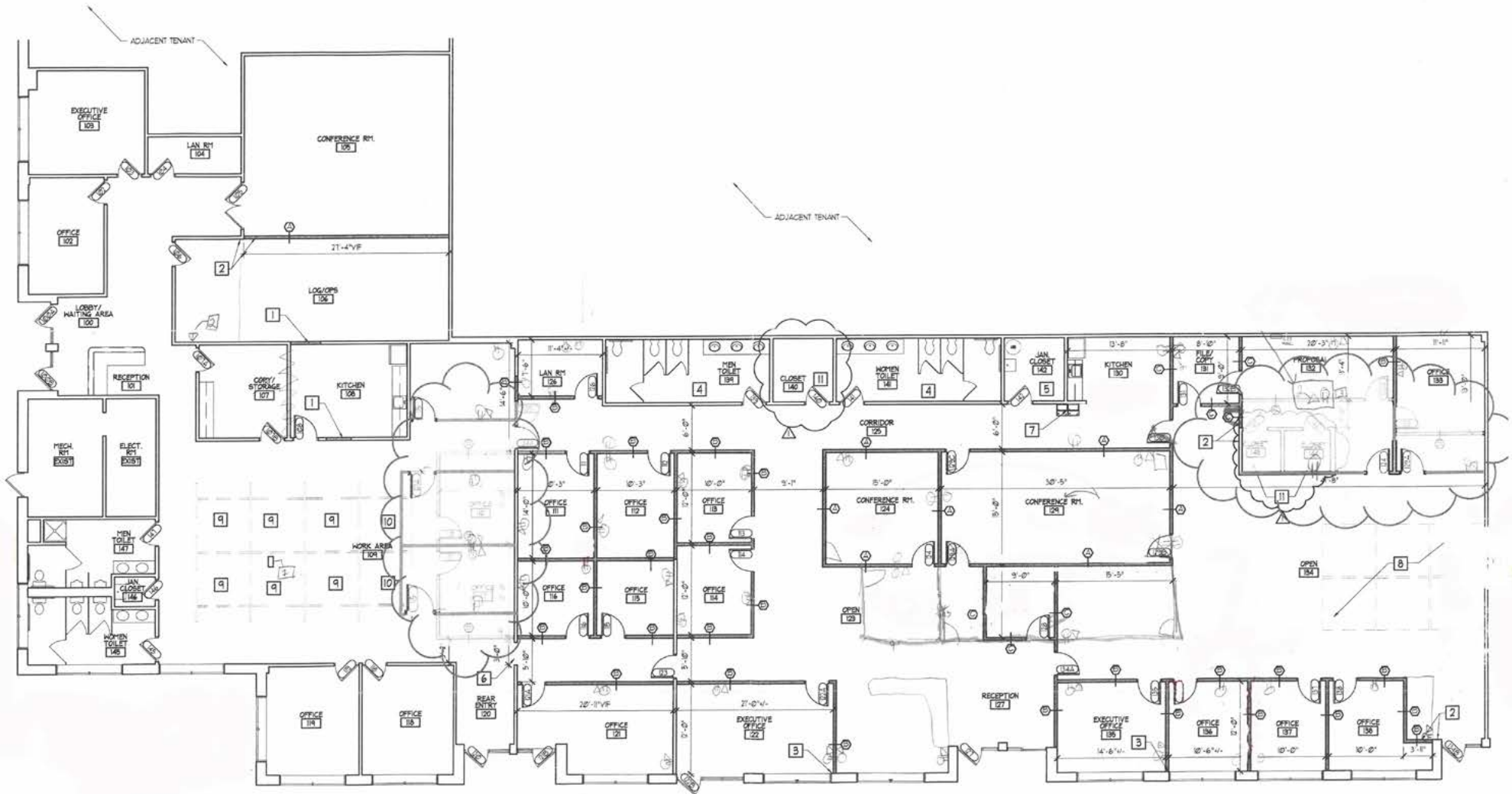


FOR LEASE

Harford County, Maryland

FLOOR PLAN: 1311 - SUITE A

WILLIAM PACA INDUSTRIAL PARK | 1309-1311 CONTINENTAL DRIVE | ABINGDON, MARYLAND 21009



FOR LEASE

Harford County, Maryland

FLOOR PLAN: 1311 - SUITE G

WILLIAM PACA INDUSTRIAL PARK | 1309-1311 CONTINENTAL DRIVE | ABINGDON, MARYLAND 21009



FOR LEASE

Harford County, Maryland

TRADE AREA

WILLIAM PACA INDUSTRIAL PARK | 1309-1311 CONTINENTAL DRIVE | ABINGDON, MARYLAND 21009

