



1401 Bells Ferry Rd

1401 Bells Ferry Rd, Marietta, GA 30066



Joseph Clay

Coldwell Banker Commercial Realty
800 Whitlock Ave, Suite 115, Marietta, GA 30064
joseph.clay@coldwellbankeratlanta.com
(404) 401-4400

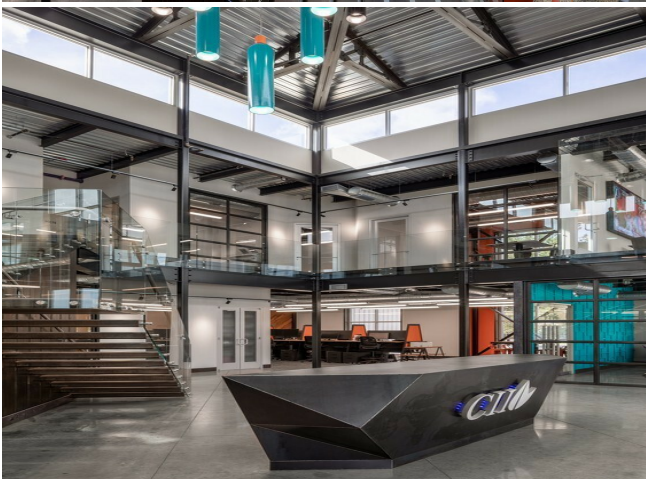
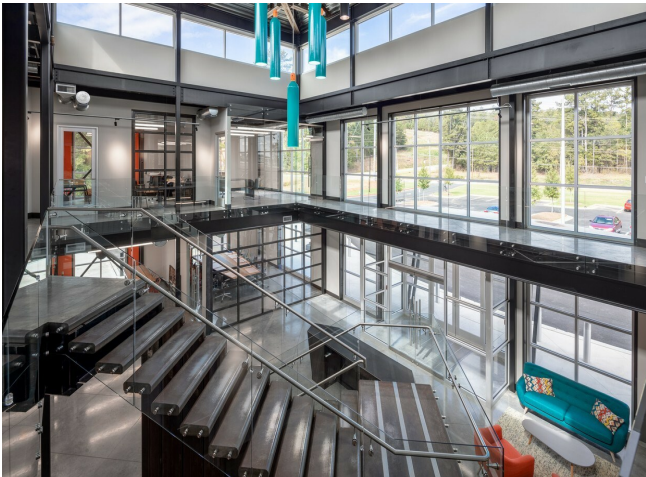


1401 Bells Ferry Rd

\$14.00 /SF/Yr

Under construction, delivery timeframe is flexible based on tenant requirements. Excellent location in Marietta, just off Cobb Pkwy. and close to I-75. Very upscale two story office buildout, plus clear span warehouse, up to 22,000 sq. ft. in total space across three buildings. Current delivery timeframe is Q4 2022....

- Excellent Marietta location, very upscale office buildout



Rental Rate:	\$14.00 /SF/Yr
Total Space Available:	21,900 SF
Max. Contiguous:	7,800.00 SF
Property Type:	Flex
Property Subtype:	R&D
Building Class:	B
Rentable Building Area:	22,000 SF
Year Built:	2022
Construction Status:	Proposed
Rental Rate Mo:	\$1.17 USD/SF/Mo

1st Floor

Space Available	7,800 SF
Rental Rate	\$14.00 /SF/Yr
Contiguous Area	7,800 SF
Date Available	December 01, 2022
Service Type	Modified Gross
Office Size	7,800 SF
Space Type	Relet
Space Use	Flex
Lease Term	7 - 10 Years

Under construction, delivery timeframe is flexible based on tenant requirements. Excellent location in Marietta, just off Cobb Pkwy. and close to I-75. Very upscale two story office buildout, plus clear span warehouse, up to 22,000 sq. ft. in total space, across three buildings. Current delivery timeframe is Q4 2022.

1st Floor

Space Available	6,300 SF
Rental Rate	\$14.00 /SF/Yr
Date Available	December 01, 2022
Service Type	Modified Gross
Space Type	Relet
Space Use	Flex
Lease Term	7 - 10 Years

1st Floor

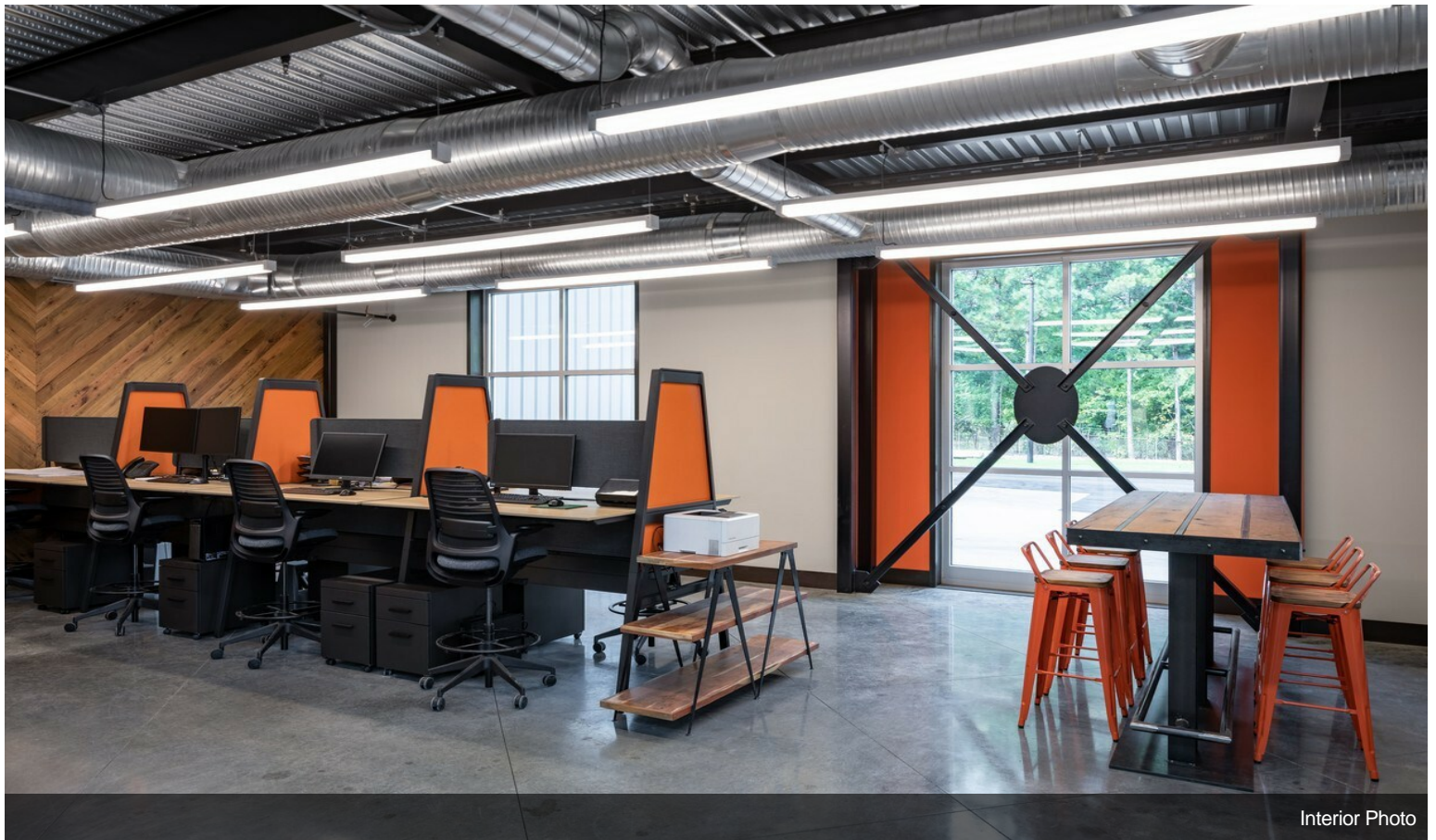
Space Available	7,800 SF
Rental Rate	\$14.00 /SF/Yr
Date Available	December 01, 2022
Service Type	Modified Gross
Space Type	Relet
Space Use	Flex
Lease Term	7 - 10 Years



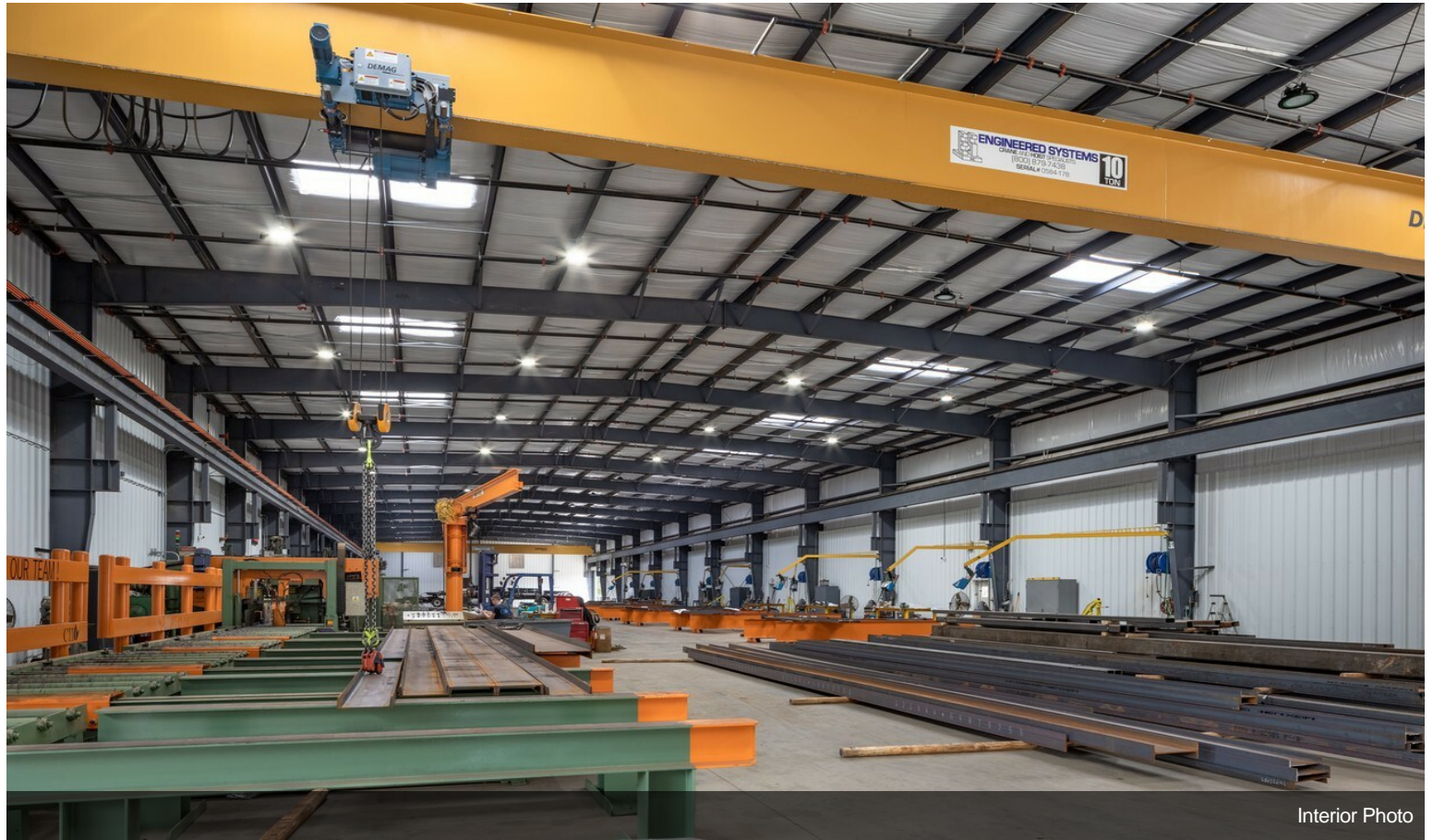
1401 Bells Ferry Rd, Marietta, GA 30066

Under construction, delivery timeframe is flexible based on tenant requirements. Excellent location in Marietta, just off Cobb Pkwy. and close to I-75. Very upscale two story office buildout, plus clear span warehouse, up to 22,000 sq. ft. in total space across three buildings. Current delivery timeframe is Q4 2022.

Property Photos



Property Photos



Interior Photo