

FOR LEASE | INDUSTRIAL/RETAIL

1775 N. LAPEER RD.



1775 N. LAPEER RD
OXFORD, MI 48370

PROPERTY HIGHLIGHTS:

- 2,800 SF unit for lease with Lapeer Rd frontage
- Industrial or industrial/retail for lease in fantastic location on Lapeer Rd.
- Unit has 500 SF of office/reception and 2,300 SF of warehouse with high, pitched ceilings and overhead door
- Floor drains, gas forced furnaces, ceiling fans/LED lighting, great clean warehouse space
- Tenant pays 1/4 insurance and taxes, landlord pays all landscaping/snow/salt and refuse
- Lease rate is \$2,450.00/unit/mo plus taxes and insurance

The information provided herein along with any attachment(s) was obtained from sources believed to be reliable, however, Friedman Real Estate makes no guarantees, warranties, or representations as to the completeness or accuracy of such information and legal counsel is advised. All information provided is subject to verification and no liability for reliance on such information or errors or omissions is assumed. The presentation of this property is submitted subject to errors, omissions, change of price or conditions, prior sale or lease, or withdrawal without notice. Copyright © 2025 Friedman Real Estate. All rights reserved.

FOR MORE INFORMATION PLEASE CONTACT:

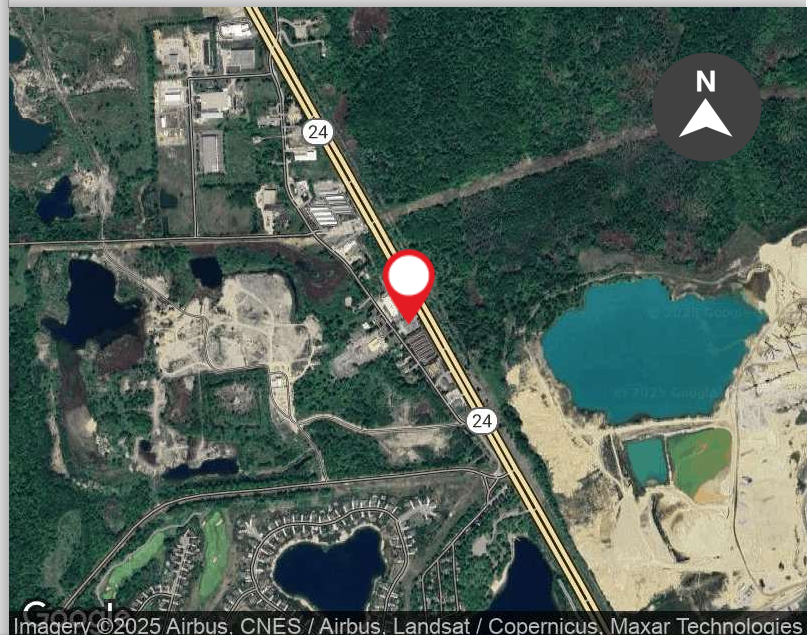


LARRY SCHULTZ

Vice President, Brokerage Services
larry.schultz@freg.com

248.324.2000

eCODE 238



1775 N. LAPEER RD.**PROPERTY INFORMATION****HIGHLIGHTS**

Building SF:	11,200 SF
Available SF:	2,800 SF
Office SF (Per Unit):	500 SF
Warehouse SF (Per Unit):	2,300 SF
County:	Oakland
Zoning:	Light Industrial
Cross Streets:	N. Lapeer and Ray Rd.

GENERAL

Parking Ratio:	4.0
Parking Type:	Surface

PRICING

Lease Rate:	\$2,450.00/unit/mo (+taxes and insurance)
-------------	---

BUILDING INFORMATION

Type:	Industrial/Retail
Year Built:	2000
Stories:	1
Lighting:	LED
Heating:	GFA
Clear Height:	14'-22'
Restrooms:	1
Electrical:	220/3p
# Grade Level Doors:	1
Overhead Door Height:	12'

FOR MORE INFORMATION **PLEASE CONTACT:****LARRY SCHULTZ**
larry.schultz@freg.com

1775 N. LAPEER RD.
PROPERTY PHOTOS



FOR MORE INFORMATION **PLEASE CONTACT:**



LARRY SCHULTZ
larry.schultz@freg.com