



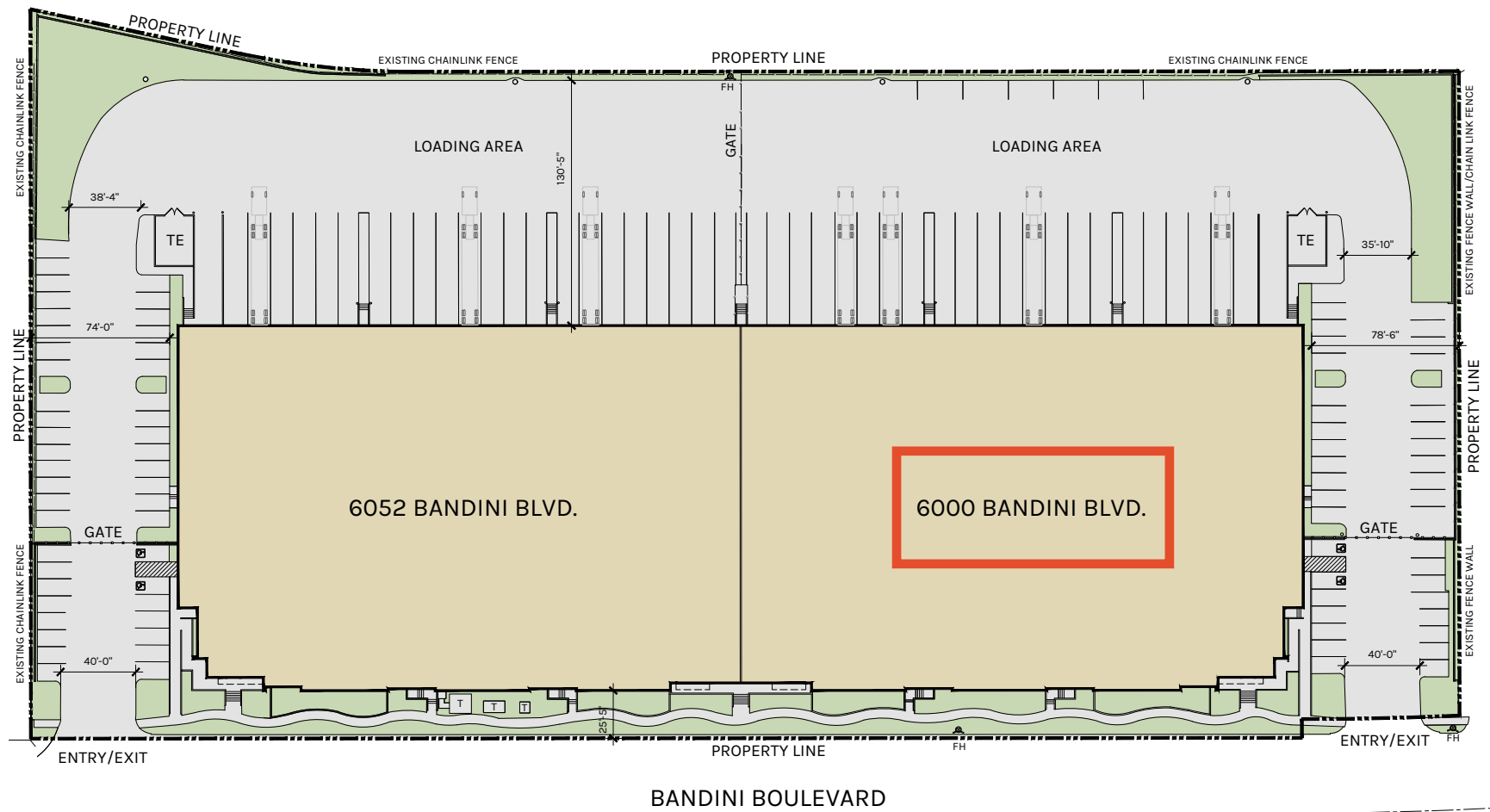
58,810 SQUARE FEET FOR LEASE

PREMIER WAREHOUSE DISTRIBUTION FACILITY AVAILABLE
6000 Bandini Blvd | Commerce, CA 90040



Property Highlights

- 58,810 square feet
- 4,698 square feet of office
- 32' minimum warehouse clearance
- (11) dock high positions, (1) grade level door
- 600 amps, 277/480 Volts
- ESFR sprinkler system (K25 sprinkler heads)
- 100% concrete truck court

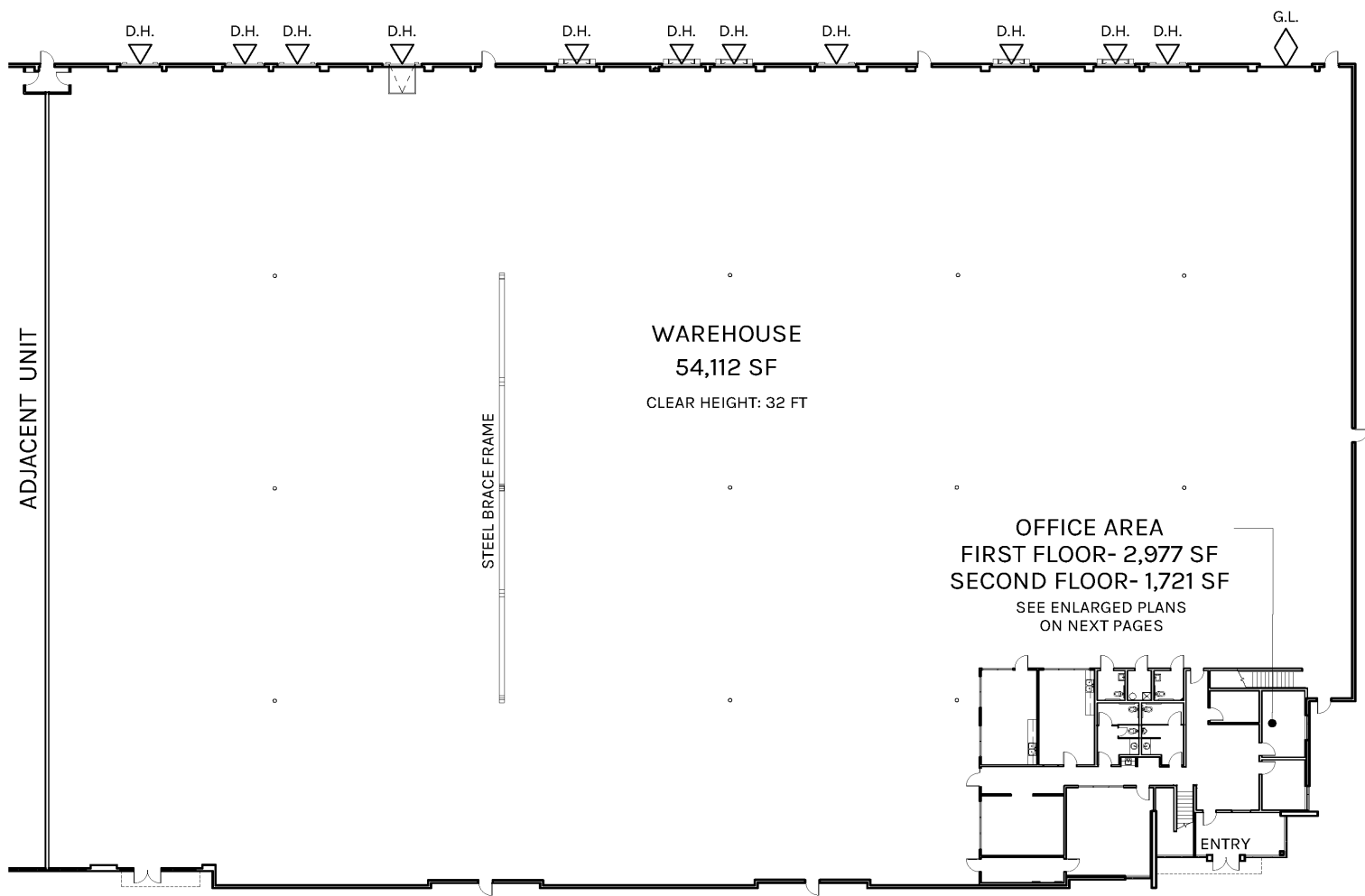


WAREHOUSE
54,112 SF

OFFICE
4,698 SF

TOTAL
58,810 SF

PLAN LAYOUT SUBJECT TO FIELD CONDITIONS AND MAY DIFFER FROM PLAN AS SHOWN. ALL INFORMATION PRESENTED ON THIS DRAWING IS PRESUMED TO BE ACCURATE, HOWEVER TENANT SHOULD VERIFY PERTINENT INFORMATION PRIOR TO COMMITTING TO A LEASE. ANY FURNITURE OR APPLIANCES SHOWN ON PLAN ARE FOR CONCEPT ONLY AND WILL BE TENANT PROVIDED.



WAREHOUSE
54,112 SF

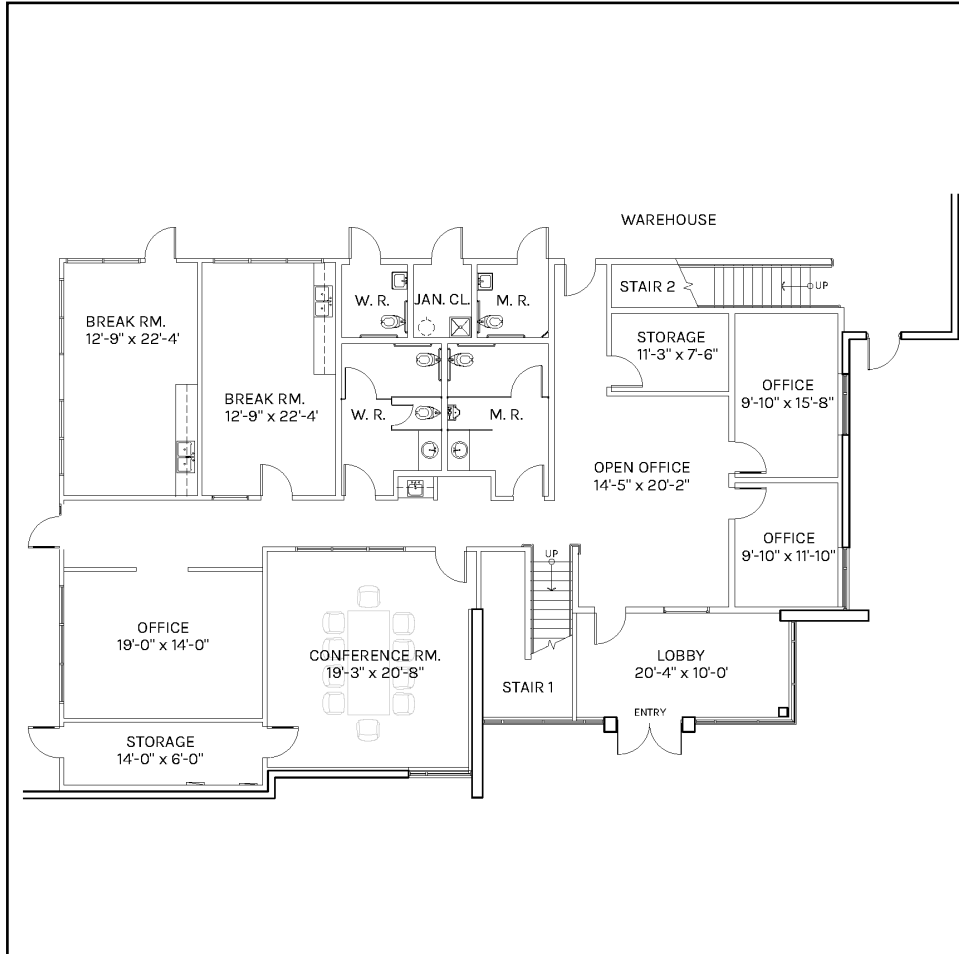
OFFICE
4,698 SF

TOTAL
58,810 SF

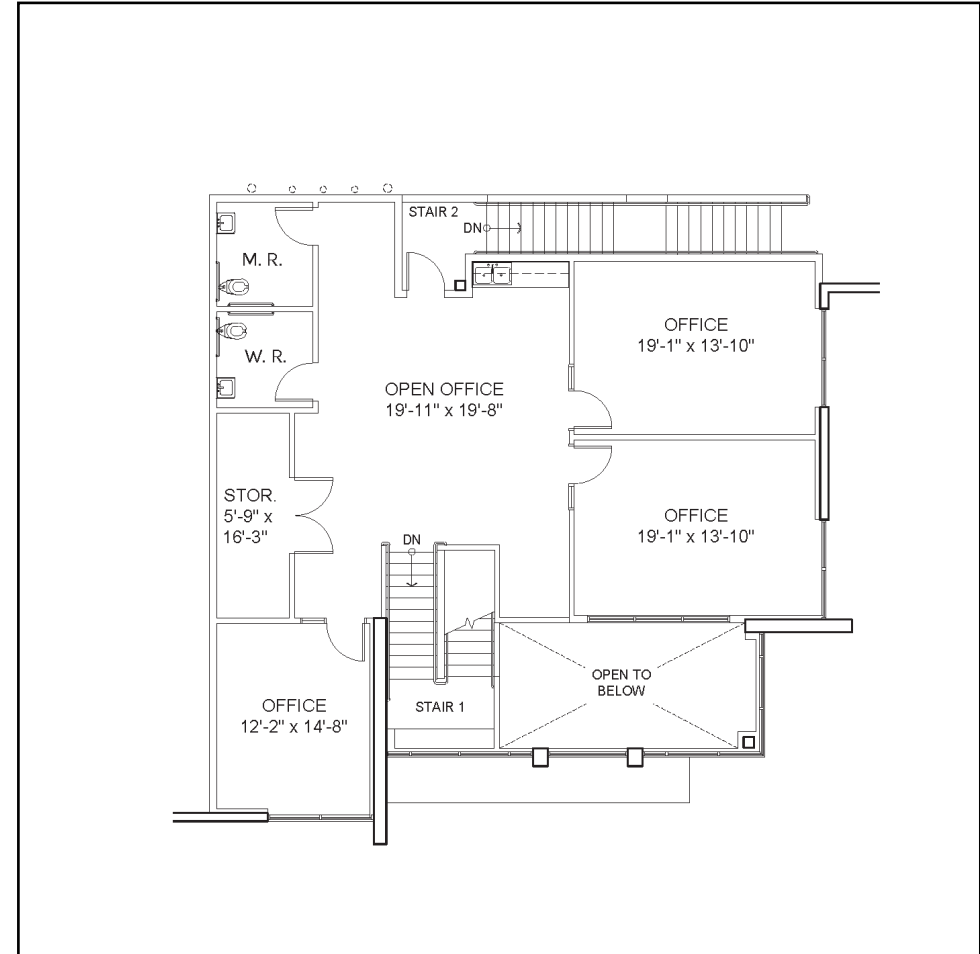
PLAN LAYOUT SUBJECT TO FIELD CONDITIONS AND MAY DIFFER FROM PLAN AS SHOWN. ALL INFORMATION PRESENTED ON THIS DRAWING IS PRESUMED TO BE ACCURATE, HOWEVER TENANT SHOULD VERIFY PERTINENT INFORMATION PRIOR TO COMMITTING TO A LEASE. ANY FURNITURE OR APPLIANCES SHOWN ON PLAN ARE FOR CONCEPT ONLY AND WILL BE TENANT PROVIDED.



1st Floor



2nd Floor

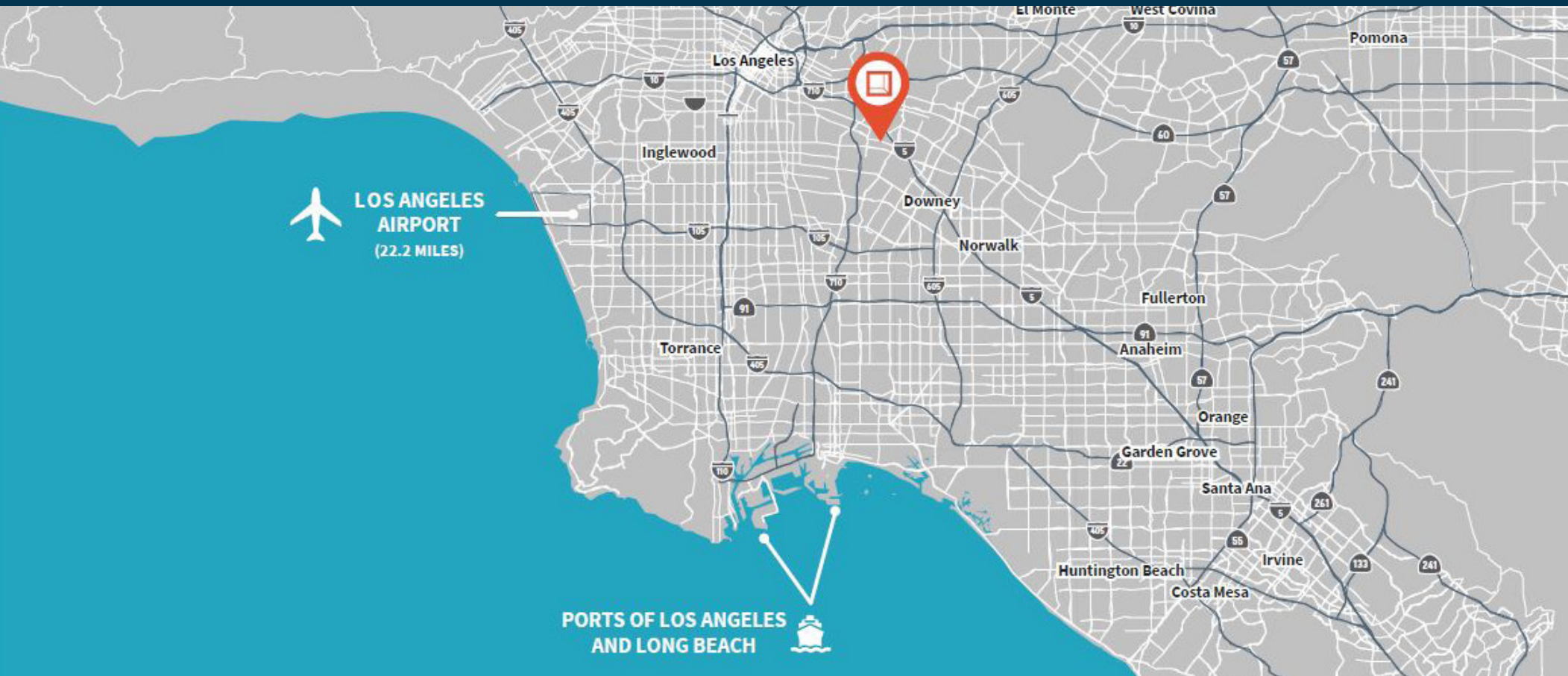


WAREHOUSE
54,112 SF

OFFICE
4,698 SF

TOTAL
58,810 SF

PLAN LAYOUT SUBJECT TO FIELD CONDITIONS AND MAY DIFFER FROM PLAN AS SHOWN. ALL INFORMATION PRESENTED ON THIS DRAWING IS PRESUMED TO BE ACCURATE, HOWEVER TENANT SHOULD VERIFY PERTINENT INFORMATION PRIOR TO COMMITTING TO A LEASE. ANY FURNITURE OR APPLIANCES SHOWN ON PLAN ARE FOR CONCEPT ONLY AND WILL BE TENANT PROVIDED.



Location Highlights

- Same day serviceability to all of Los Angeles County
- Immediate access to 5, 710 and 105 Freeways
- Proximity to multiple parcel delivery hubs
- Minutes to BNSF and Union Pacific intermodal rail yards
- Amenities and eateries at nearby Citadel Outlets

2.3 Miles
to I-5

23.1 Miles
to LAX

20.2 Miles
to Long Beach
Airport

1.9 Miles
to I-710

23.0 Miles
to Port of LA and LA

18.5 Miles
to Alameda Corridor

13.7 Miles
to I-105

10.1 Miles
to DTLA

16.7 Miles
to ICTF



**Rexford
Industrial**

LEASING CONTACTS

ZAC SAKOWSKI
Vice Chairman
424-294-3429
zac.sakowski@jll.com
LIC # 01856260

BRIANNA DEMUS
Managing Director
424-294-3436
brianna.demus@jll.com
LIC #02049585



Jones Lang LaSalle
2141 Rosecrans Ave., Suite 6100
El Segundo, CA 90245

424.294.3400
<https://www.us.jll.com/>

JONES LANG LASALLE BROKERAGE, INC. LICENSE #01856260. COPYRIGHT © JONES LANG LASALLE IP, INC.
2025 ALL RIGHTS RESERVED. ALL INFORMATION CONTAINED HEREIN IS FROM SOURCES DEEMED RELIABLE;
HOWEVER, NO REPRESENTATION OR WARRANTY IS MADE TO THE ACCURACY THEREOF.