

# 28 KENNEDY BLVD EAST BRUNSWICK, NJ 08816

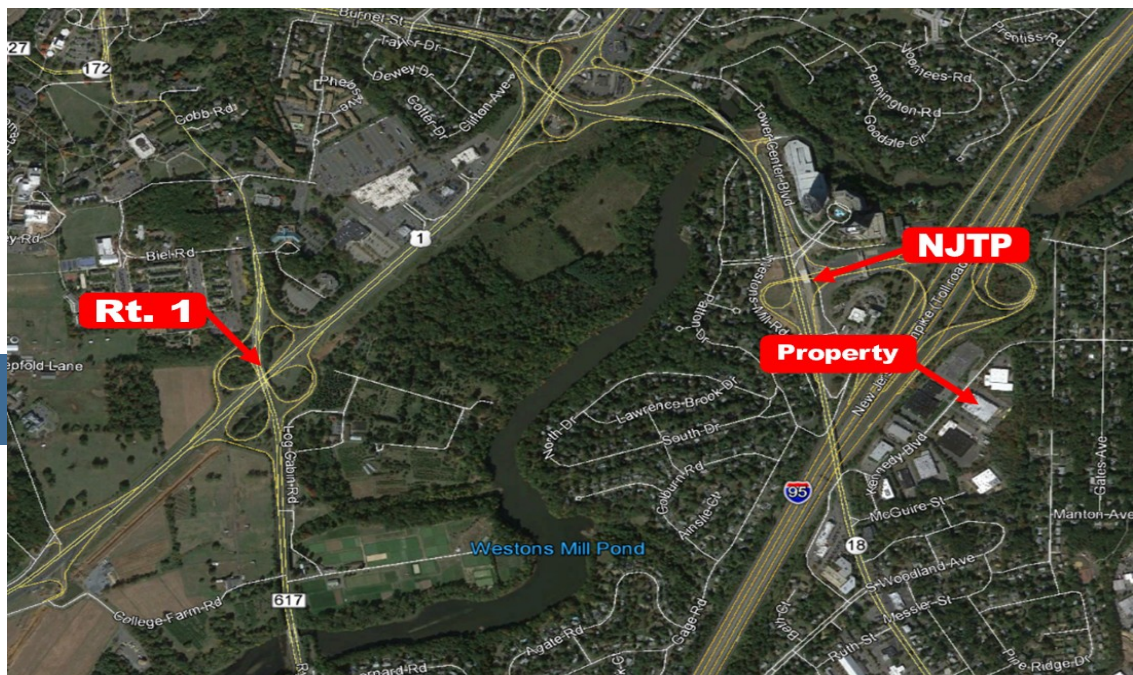
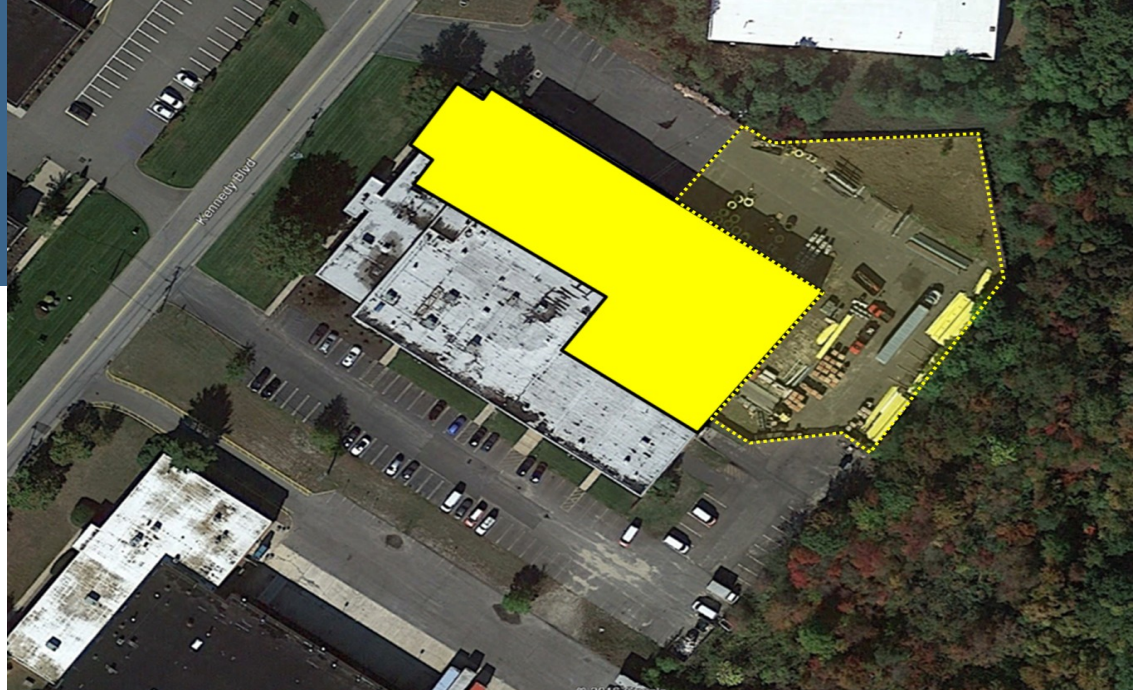
AVAILABLE FOR LEASE

SECONDS FROM EXIT 9 OF THE NJ TURNPIKE,  
ROUTE 18 AND ROUTE 1

- 27,765 SQUARE FEET AVAILABLE
- 2,567 SF OFFICE SPACE
- 20' CLEAR WAREHOUSE
- TWO INTERNAL LOADING DOORS
- TWO OVERSIZED DRIVE-IN DOORS
- AMPLE PARKING
- +/- 1 ACRE TRAILER PARKING/IOS
- OCCUPANCY JUNE 1, 2025

ASKING \$15.95 PSF, NNN

*Lance Bram*  
COMMERCIAL BROKERAGE  
[www.lancebram.com](http://www.lancebram.com)



JOE D'AGOSTINO 732.690.6339 [JOE@LANCEBRAM.COM](mailto:JOE@LANCEBRAM.COM)

This information has been secured from sources we believe to be reliable. Accordingly, no warranty or representation, express or implied, is made to the accuracy of the information contained herein, and same submitted to errors, omissions, change of price, rental or other conditions, withdrawal notice, and to any special listing conditions imposed by our principals.