



# RETAIL AT STONEWALL COMMONS

3101 Clays Mill Road, Ste. 103, Lexington, KY

## CONTACT

BRYAN LITTLE

859.619.4969 | [bryan@littlerealestateky.com](mailto:bryan@littlerealestateky.com)



[kycommercial.net](http://kycommercial.net)

The information contained herein was obtained from sources deemed reliable; however, no guarantees, warranties or representations as to the completeness or accuracy thereof. The presentation of this real estate information is subject to errors; omissions; change of price; prior sale or lease; or withdrawal without notice.

# PROPERTY DESCRIPTION

## Retail Space at Stonewall Commons

3101 Clays Mill Road, Ste. 103, Lexington, KY



### LOCATION

Located at the intersection of Reynolds Road and Clays Mill Road, in close proximity to Fayette Mall.

### AVAILABLE

+/-5,107 SF retail leasing opportunity

### RATE

\$18/SF/YR NNN

### HIGHLIGHTS

- Last remaining retail opportunity in Stonewall Commons, a well-established neighborhood shopping center
- Located at the signalized intersection of Clays Mill Road and Reynolds Road
- Strong visibility and accessibility with steady daily traffic
- Positioned just minutes from Fayette Mall and major retail corridors
- Surrounded by a strong mix of local and national tenants
- Co-tenancy includes North Lime Coffee & Donuts, Crank & Boom, Bluegrass Baking Company, Big Kahuna, Goodwill, and more
- High foot traffic driven by destination food and service users
- Ample on-site parking with convenient access points
- Located within a dense and established residential trade area

### DEMOGRAPHICS

	1 Mile	3 Mile	5 mile
Population	8.8K	92.4K	195.6K
Daytime Population	12.3K	82.3K	192.1K
Household Income Avg.	\$113.5K	\$109.2K	\$97K

### KY COMMERCIAL

1908 Bryant Road, Suite 250, Lexington, KY 40509  
www.kycommercial.net

BRYAN LITTLE

p: 859.619.4969

e: bryan@littlerealestateky.com



# PROEPRTY PHOTOS

# Retail Space at Stonewall Commons

3101 Clays Mill Road, Ste. 103, Lexington, KY



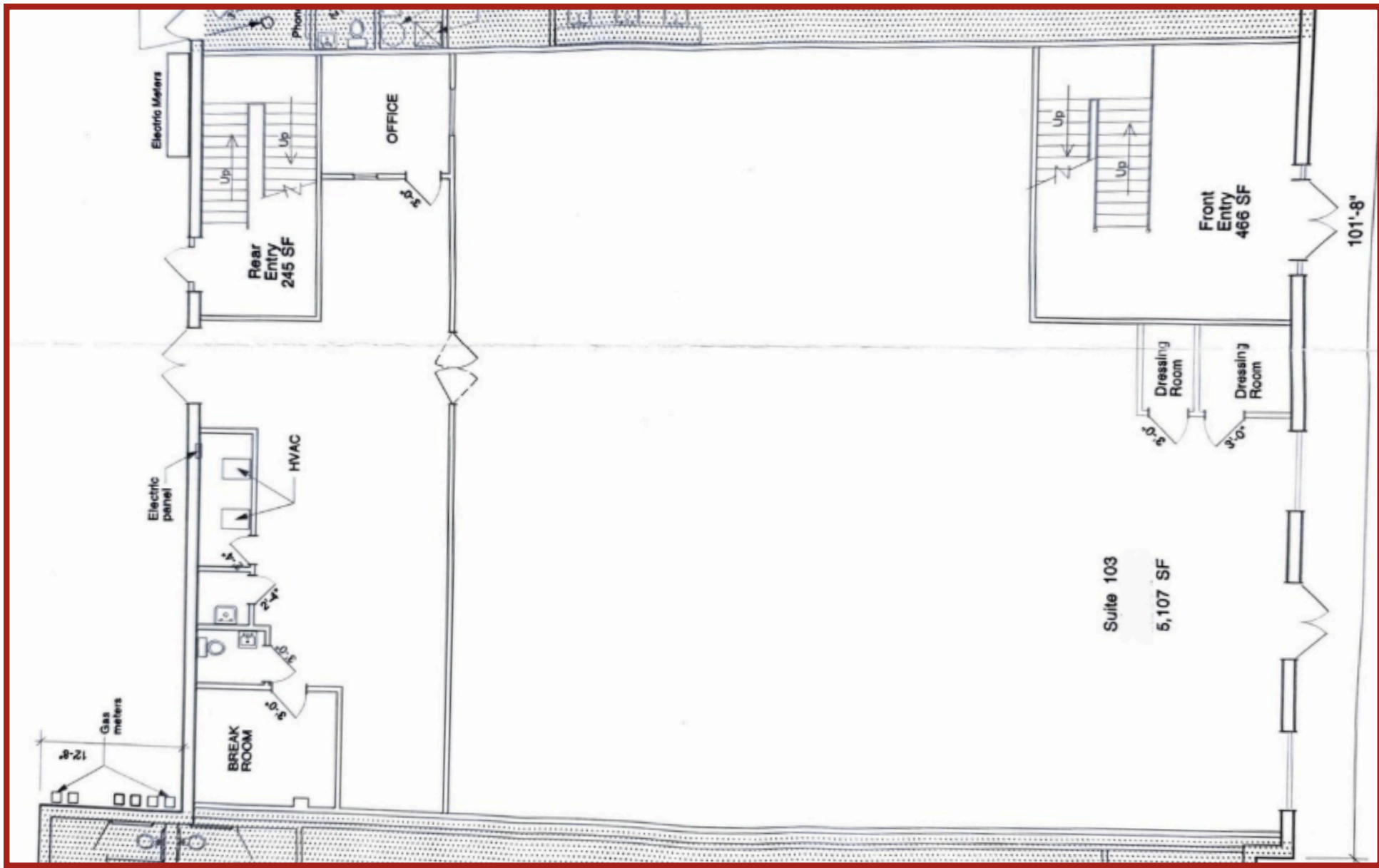
**KY COMMERCIAL**  
1908 Bryant Road, Suite 250, Lexington, KY 40509  
[www.kycommercial.net](http://www.kycommercial.net)

**BRYAN LITTLE**  
p: 859.619.4969  
e: [bryan@littlerealestateky.com](mailto:bryan@littlerealestateky.com)

# FLOORPLAN

# Retail Space at Stonewall Commons

3101 Clays Mill Road, Ste. 103, Lexington, KY



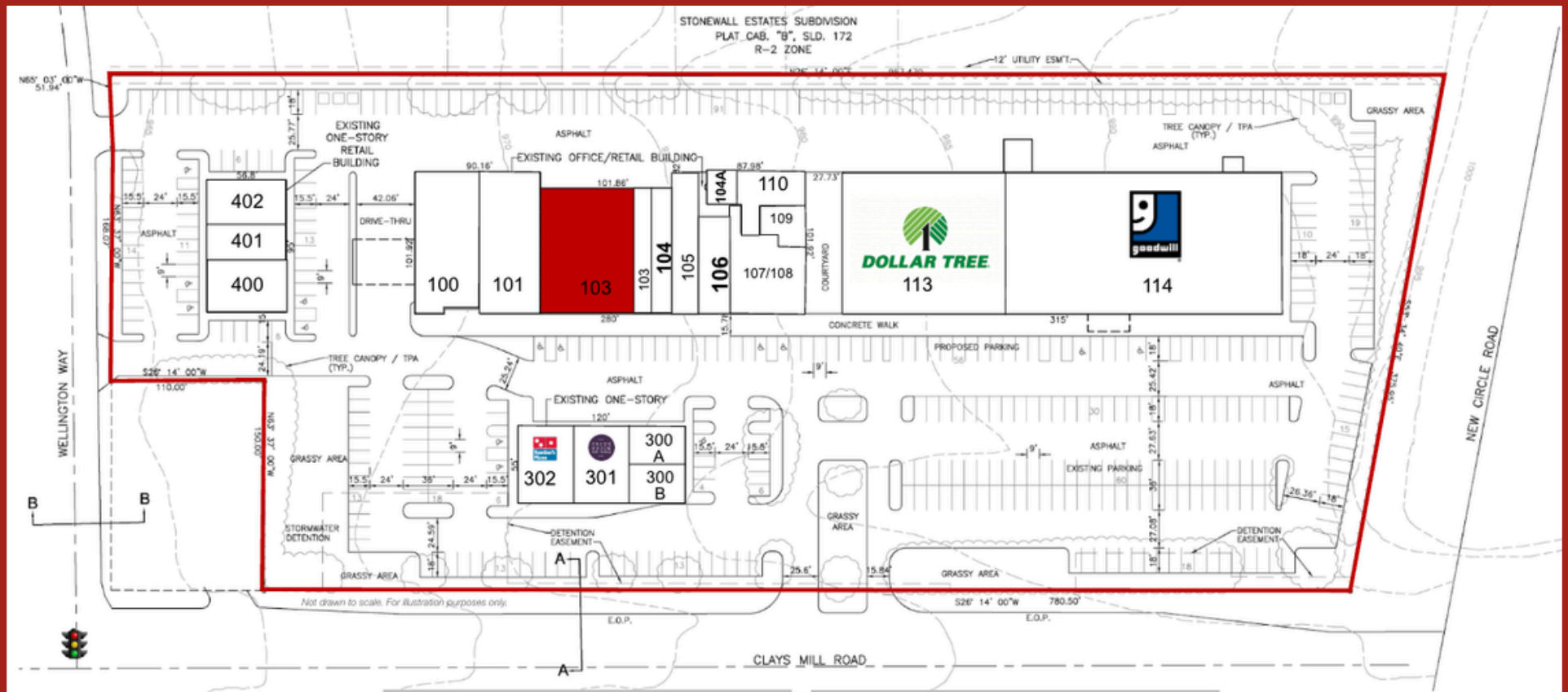
**KY COMMERCIAL**  
1908 Bryant Road, Suite 250, Lexington, KY 40509  
[www.kycommercial.net](http://www.kycommercial.net)

**BRYAN LITTLE**  
p: 859.619.4969  
e: [bryan@littlerealestateky.com](mailto:bryan@littlerealestateky.com)

# SITE PLAN

# Retail Space at Stonewall Commons

3101 Clays Mill Road, Ste. 103, Lexington, KY



Retail Building 100			Retail Building 300		
Suite	Tenant	Size (sf)	Suite	Tenant	Size (sf)
100	Park Federal Credit Union	3,750	300A	North Lime Coffee & Donuts	1,673
101	DY Market	5,379	300B	Cheng's Restaurant	1,629
103	<b>AVAILABLE</b>	<b>5,107</b>	301	Crank & Boom Craft Ice Cream	2,200
103A	Bei Capelli Salon	1,623	302	Domino's Pizza	1,100
104	Rimi Med & Aesthetics	1,678			
104A	Big Kahuna	530			
105	Bella Blooms	2,361			
106	Big Kahuna	1,540			
107/108	Bluegrass Baking	2,418			
109	The Local Agents	565			
110	Sothka Candy Touch	1,546			
113	Dollar Tree	11,282			
114	Goodwill	21,900			

Retail Building 400		
Suite	Tenant	Size (sf)
400	Hi Acres Liquor	2,400
401	Kitchen Shift	1,401
402	State Farm Insurance	1,316



**KY COMMERCIAL**  
1908 Bryant Road, Suite 250, Lexington, KY 40509  
www.kycommercial.net

**BRYAN LITTLE**  
p: 859.619.4969  
e: bryan@littlerealestateky.com