

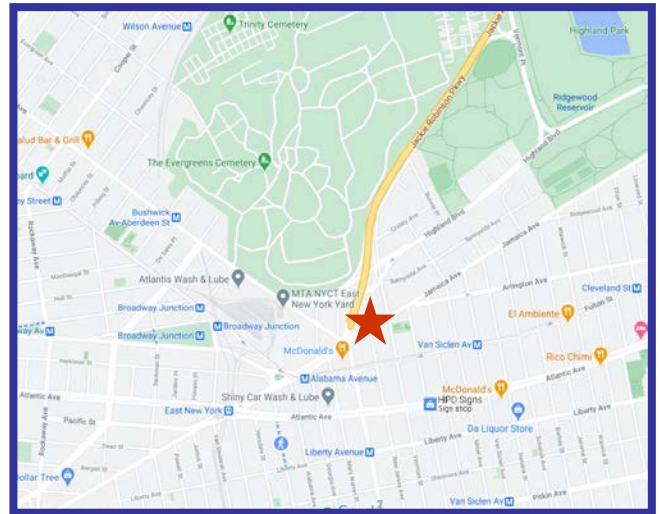
PRIME EAST NEW YORK BUILDING FOR LEASE 5,800 SQ. FT. ~ TWO STORY BUILDING WITH DEDICATED PARKING



105 Jamaica Avenue, Brooklyn, NY

FEATURES:

- ❖ Immediate occupancy
- ❖ 5,000 sq. ft. ground industrial
- ❖ 800 sq. ft. 2nd floor finished offices with tenant controlled HVAC, windows, hardwood floors and exposed brick
- ❖ Front and rear entrances
- ❖ 300 amps of power
- ❖ 1 drive in
- ❖ Gas heat
- ❖ Fantastic signage
- ❖ 22' – 25' ceilings
- ❖ Zone R4
- ❖ Easy access to Jackie Robinson Parkway
- ❖ Close to J & Z subway and Q56 bus



~ Ideal For Light Manufacturing, Contractor, Marble, Flex Tech, Retail ~

For Further Information and Inspection, Please Call Exclusive Agent:

Melissa Grasso

Salesperson

718-371-0127

mgrasso@s-z.com

 **Sholom &
Zuckerbrot** Realty LLC
Established 1962

Kaufman Astoria Studios
35-11 35th Avenue, LIC 11106

105 Jamaica Avenue, Brooklyn, NY



For Further Information and Inspection, Please Call Exclusive Agent:

Melissa Grasso

Salesperson

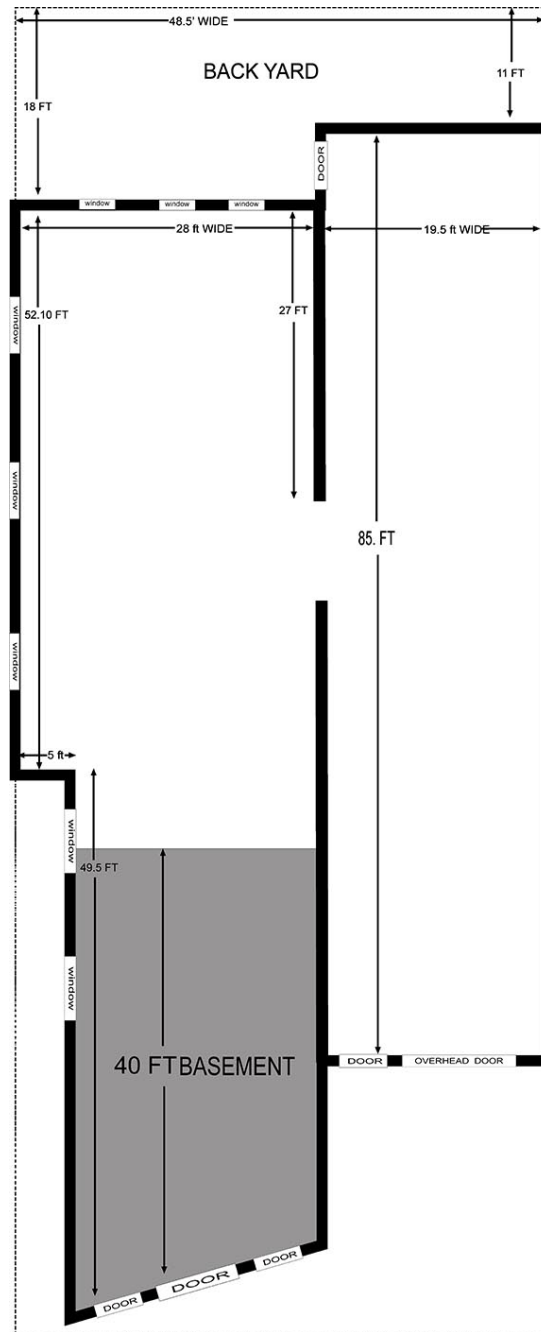
718-371-0127

mgrasso@s-z.com

 **Sholom &
Zuckerbrot Realty LLC**
Established 1962

Kaufman Astoria Studios
35-11 35th Avenue, LIC 11106

105 Jamaica Avenue, Brooklyn, NY



For Further Information and Inspection, Please Call Exclusive Agent:

Melissa Grasso

Salesperson

718-371-0127

mgrasso@s-z.com

**Sholom &
Zuckerbrot** Realty LLC
Established 1962

Kaufman Astoria Studios
35-11 35th Avenue, LIC 11106