

PRIME LOCATION IN PORTLAND'S CULTURAL DISTRICT

Century Tower

1201 SW 12TH AVENUE, PORTLAND, OR 97205



Nonprofit hub in Downtown Portland

CONTACT

Sara Daley

Justin Darling

503 568 5908 / 503 224 6791 / sdaley@naielliott.com

503 457 2990 / 503 224 6791 / jdarling@naielliott.com

NAIElliott

The information herein has been obtained from sources we deem reliable. We do not, however, guarantee its accuracy. All information should be verified prior to purchase/leasing. View the Real Estate Agency Pamphlet by visiting our website, www.naielliott.com/agencydisclosures



Collaborative workspace for non-profits

AVAILABLE SPACES

- Suites 224 & 225 (combined) - 1,701 RSF
- Suite 400 - 758 RSF
- Suite 605 - 666 RSF
- Suite 610 - 5,618 RSF
- Suites 605 & 610 (combined) - 6,284 RSF

AREA DESCRIPTION

Located at 1201 SW 12th Avenue, this property sits at the heart of Portland's thriving Cultural District. Just steps from the Portland Art Museum, South Park Blocks, PSU, and countless dining and retail options, the area offers unmatched walkability and access to transit. With a dynamic blend of arts, education, and business, this vibrant downtown neighborhood is ideal for tenants seeking visibility, convenience, and connection.

PROPERTY HIGHLIGHTS

- Secure, covered onsite car and bike parking below downtown market rates
- Large common conference room with wifi and flatscreen
- Close proximity to Hwy 26, I-405, and PSU campus
- Affordable nonprofit rates



Portland's Cultural Core is a lively blend of culture, education, and urban energy.

Anchored by Portland State University and the Portland Art Museum, it offers green spaces, diverse dining, and downtown amenities—making it one of the most connected and vibrant areas in the city.



NEARBY BUSINESSES

- Northwest Academy
- Portland Art Museum
- Portland's Center for the Arts
- Oregon Historical Society
- South Park Blocks
- PSU Campus
- Safeway
- Director Park
- 21st Century Pizza
- Dil Se Indian Cuisine
- Walk the Wok
- Providence Park
- Blue Star Donuts
- Pioneer Courthouse Square
- Madrina Cocina
- Thai Chili Jam



96

BIKE SCORE



99

WALK SCORE



92

TRANSIT SCORE

CONTACT

Sara Daley
Justin Darling

503 568 5908 / 503 224 6791 / sdaley@naielliott.com
503 457 2990 / 503 224 6791 / jdarling@naielliott.com

NAI Elliott

Area Attractions



CONTACT

Sara Daley
Justin Darling

503 568 5908 / 503 224 6791 / sdaley@naielliott.com
503 457 2990 / 503 224 6791 / jdarling@naielliott.com

NAI Elliott

The information herein has been obtained from sources we deem reliable. We do not, however, guarantee its accuracy. All information should be verified prior to purchase/leasing. View the Real Estate Agency Pamphlet by visiting our website, www.naielliott.com/agencydisclosures

Vacancies

SUITES 224 & 225 - 1,701 RSF



Tower 2nd Floor

CONTACT

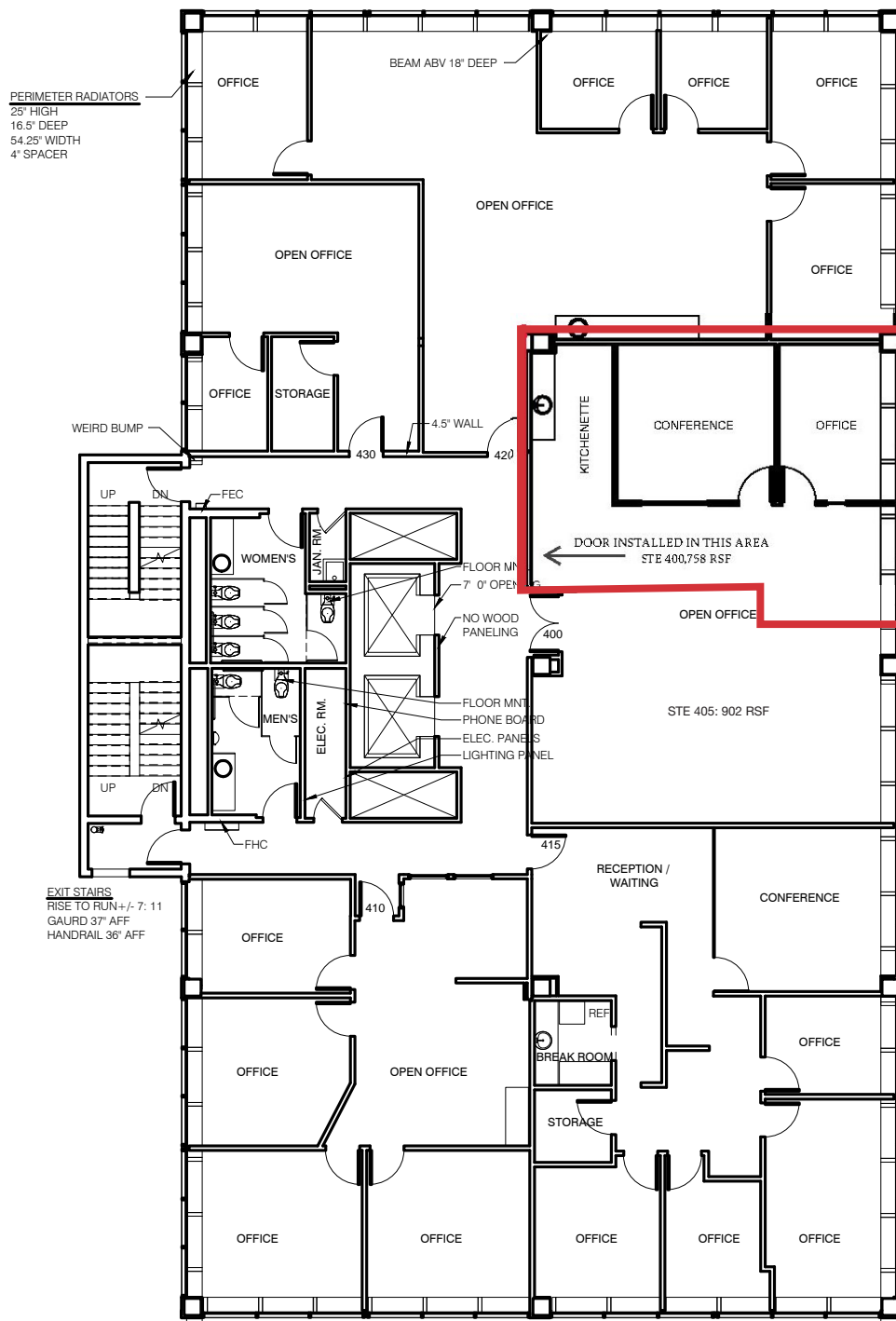
Sara Daley
Justin Darling

503 568 5908 / 503 224 6791 / sdaley@naielliott.com
503 457 2990 / 503 224 6791 / jdarling@naielliott.com

NAIElliott

Vacancies

SUITE 400 - 758 RSF



Tower 4th Floor

CONTACT

Sara Daley
Justin Darling

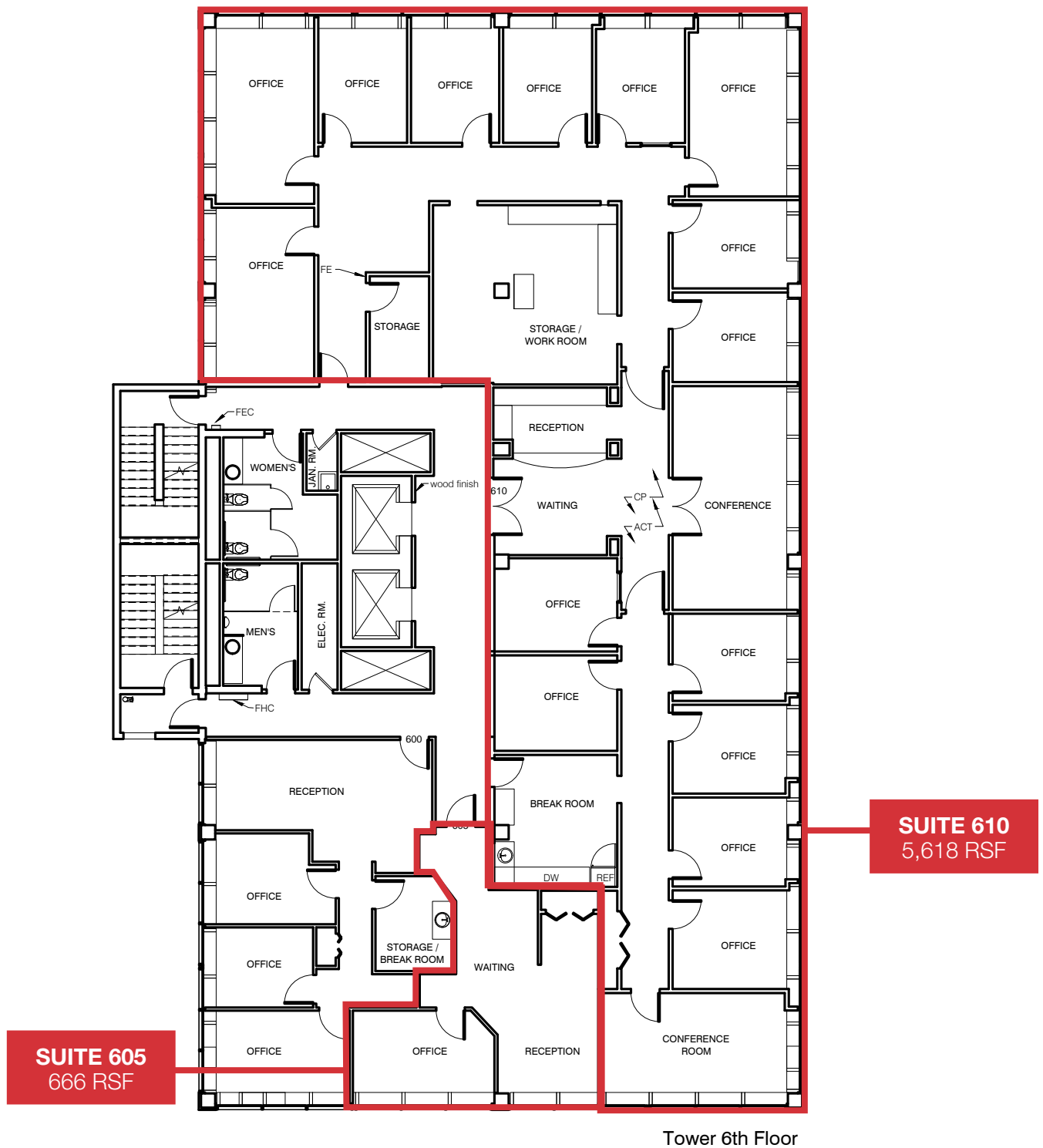
503 568 5908 / 503 224 6791 / sdaley@naielliott.com
503 457 2990 / 503 224 6791 / jdarling@naielliott.com



Vacancies

SUITE 605 - 666 RSF / SUITE 610 - 5,618 RSF

SUITES 605 & 615 COMBINED - 6,284 RSF



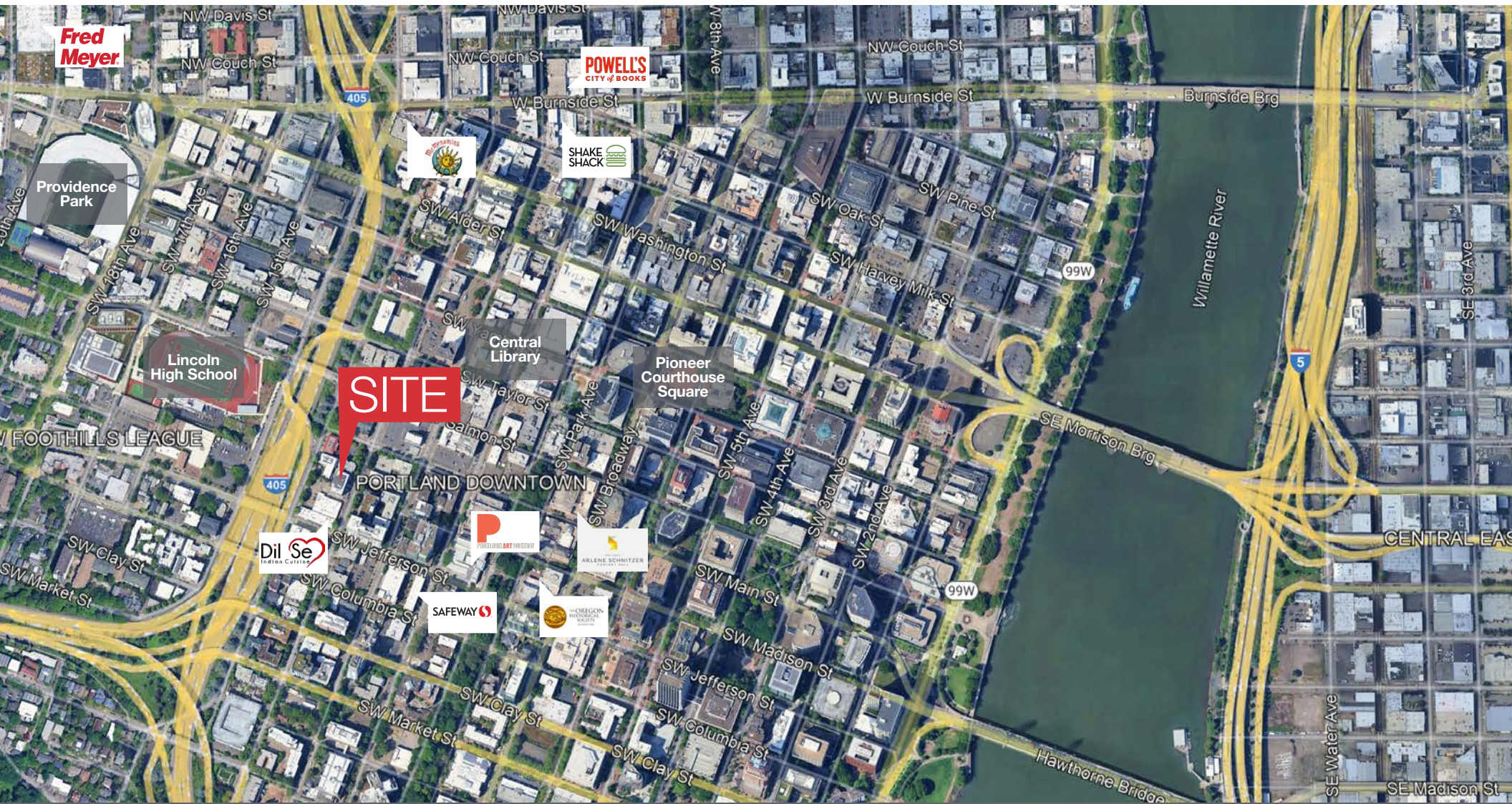
CONTACT

Sara Daley
Justin Darling

503 568 5908 / 503 224 6791 / sdaley@naielliott.com
503 457 2990 / 503 224 6791 / jdarling@naielliott.com

NAI Elliott

Location Map



CONTACT

Sara Daley

503 568 5908 / sdaley@naielliott.com

NAI Elliott

The information herein has been obtained from sources we deem reliable. We do not, however, guarantee its accuracy. All information should be verified prior to purchase/leasing. View the Real Estate Agency Pamphlet by visiting our website, www.naielliott.com/agencydisclosures