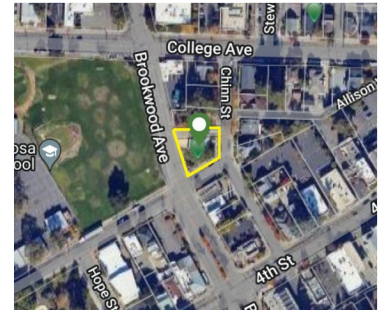


Artisan

Sotheby's
INTERNATIONAL REALTY

1915 Luxury Craftsman Office

403 Chinn Street, Santa Rosa, California



4 Offices
1 Bathroom
1,600± sq.ft

Luxury Interior Design
Conference Room
Kitchenette

6+ Car Parking Lot
3 Sided Frontage
Great Location

\$759,000

403Chinn.com

This Santa Rosa 1915 Luxury Craftsman Office boasts an exquisite downtown location on a large corner parcel with Brookwood Ave, 5th St, and Chinn St frontage. Highly visible to downtown commuters, it features a private 6+ car parking lot accessible from Brookwood Ave and Chinn St. The manicured grounds include expansive lawns, a 75-year-old Magnolia tree, and ample signage. Meticulously restored inside and out, it offers a newer roof, paint, reconstructed epoxy hardwood decks, updated wood sash windows, central HVAC, and electric remote-controlled blinds. The professionally designed interior showcases an elegant white marble foyer, high ceilings, original wood doors, newer hardwood floors, a designer kitchenette with slate flooring and leathered marble countertops, and a beautifully restored 1915-era bathroom. Five large offices open off the marble foyer, one currently serving as a luxurious conference room. A sixth potential office, now a copy room, has a Brookwood Ave rear entrance. Zoned commercial, this property could potentially convert to mixed-use or retail. Arguably one of the finest offices in downtown, it offers an unmatched location and aesthetic appeal.



Doug Swanson
DRE# 01297381
707.291.4400
doug.swanson@sothebysrealty.com

Artisan Sotheby's International Realty | 1200 College Avenue, Santa Rosa, California 95404 | 707.284.1111

© 2024 Sotheby's International Realty. All Rights Reserved. Sotheby's International Realty® is a registered trademark and used with permission. Each Sotheby's International Realty office is independently owned and operated, except those operated by Sotheby's International Realty, Inc. All offerings are subject to errors, omissions, changes including price or withdrawal without notice. Equal Housing Opportunity.