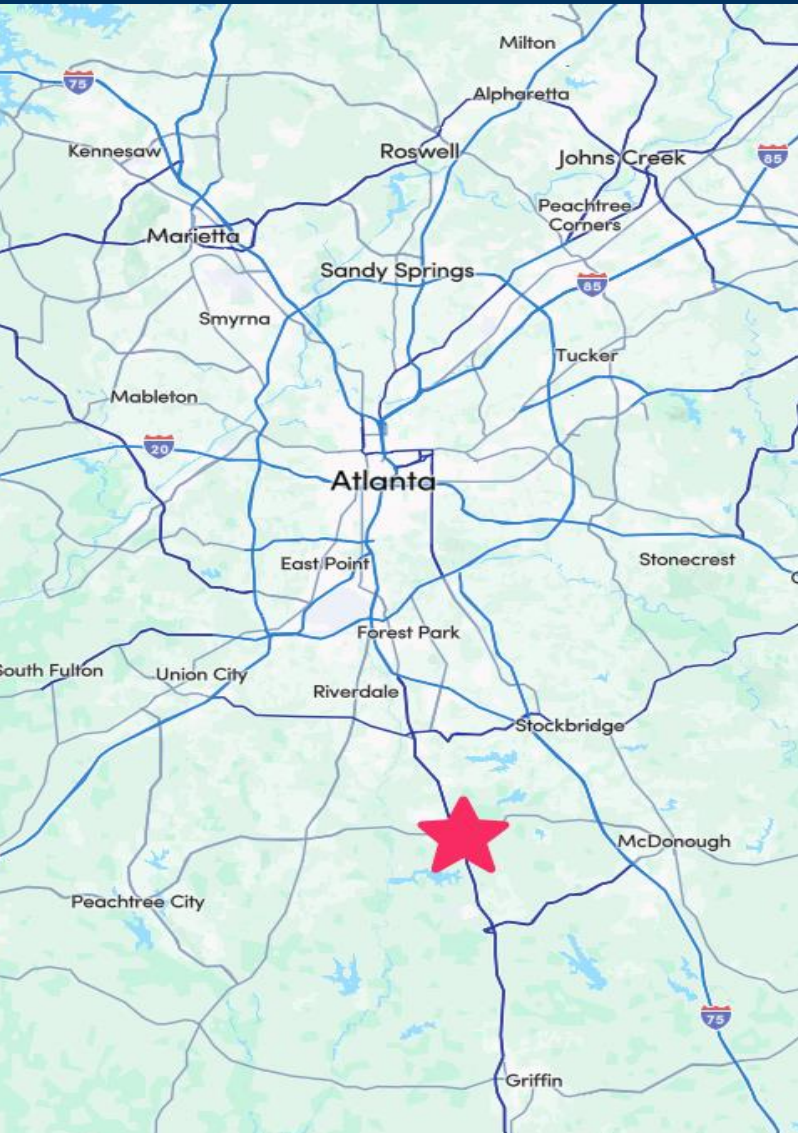


# 11531 Tara Boulevard

11531 Tara Boulevard,  
Hampton, GA 30228



## Leasing Contacts

Allie Hodge  
678-955-7676  
[Ahodge@riverwoodproperties.com](mailto:Ahodge@riverwoodproperties.com)

Marrissa Chanin  
678-955-7676  
[Marrissa@riverwoodproperties.com](mailto:Marrissa@riverwoodproperties.com)

[riverwoodproperties.com](http://riverwoodproperties.com)

## Property Highlights

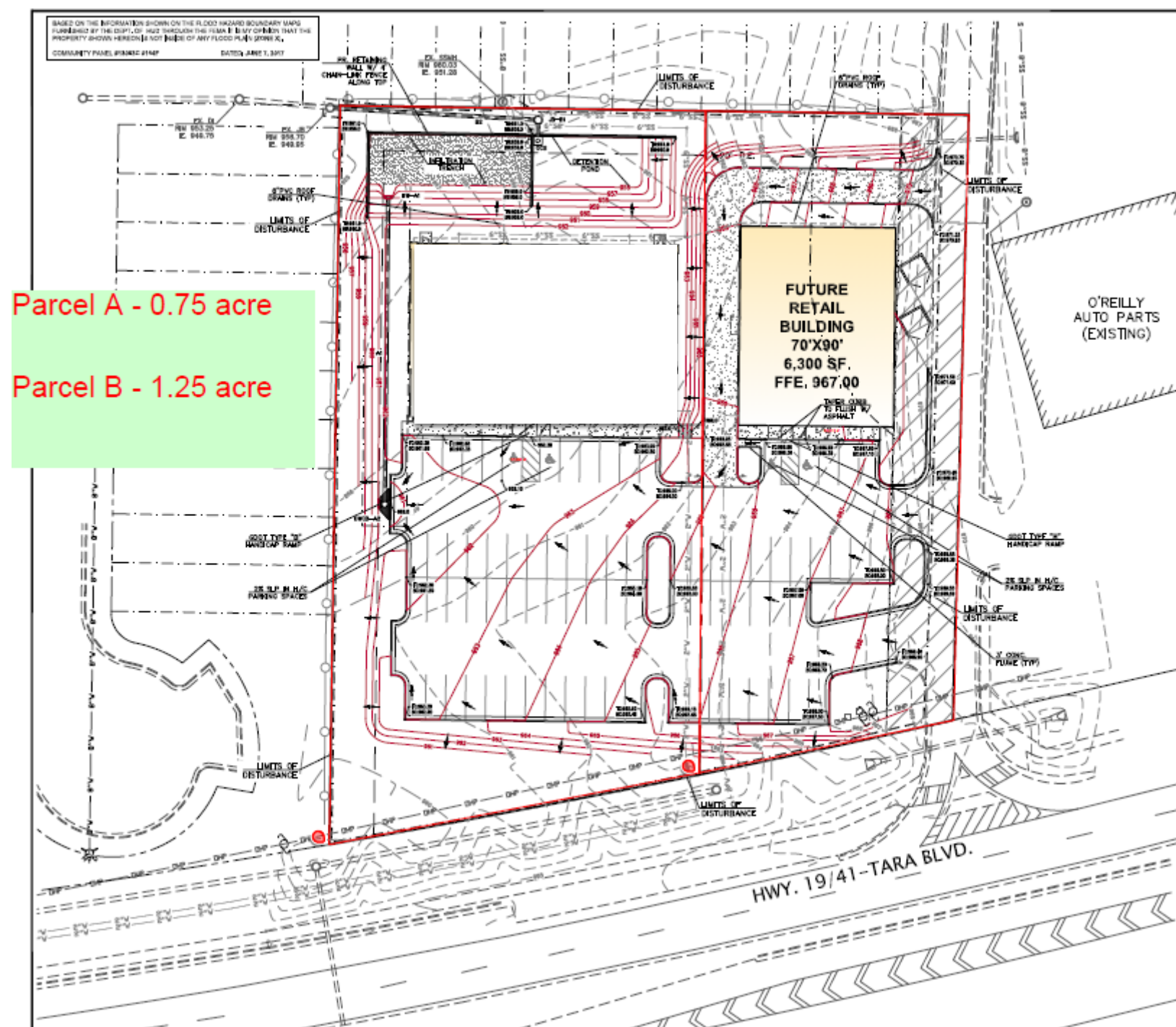
### Henry County

11531 Tara Boulevard, Hampton, GA 30228

- This property is along where Tara Boulevard turns into Highway 41.
- An excess of 28,500 VPD, providing retailers exceptional exposure and great visibility.
- Signage opportunities visible along a high-traffic street.
- Within 5-miles of the subject property there are over 81,000 residents with a household income exceeding \$99,000.
- Prime visibility from Tara Boulevard with curb cuts
- Just down from neighborhood Walmart center with a plethora of QSRs.
- Zoned Commercial.



<b>B</b>	<b>At lease with Medical User</b>	<b>1.25 Acres</b>
----------	-----------------------------------	-------------------



## Site Plan



# AREA DEMOGRAPHICS



2024  
Population

1 MILE	10,172
3 MILE	36,966
5 MILE	77,307



2024 Daytime  
Population

1 MILE	3,867
3 MILE	34,966
5 MILE	54,197



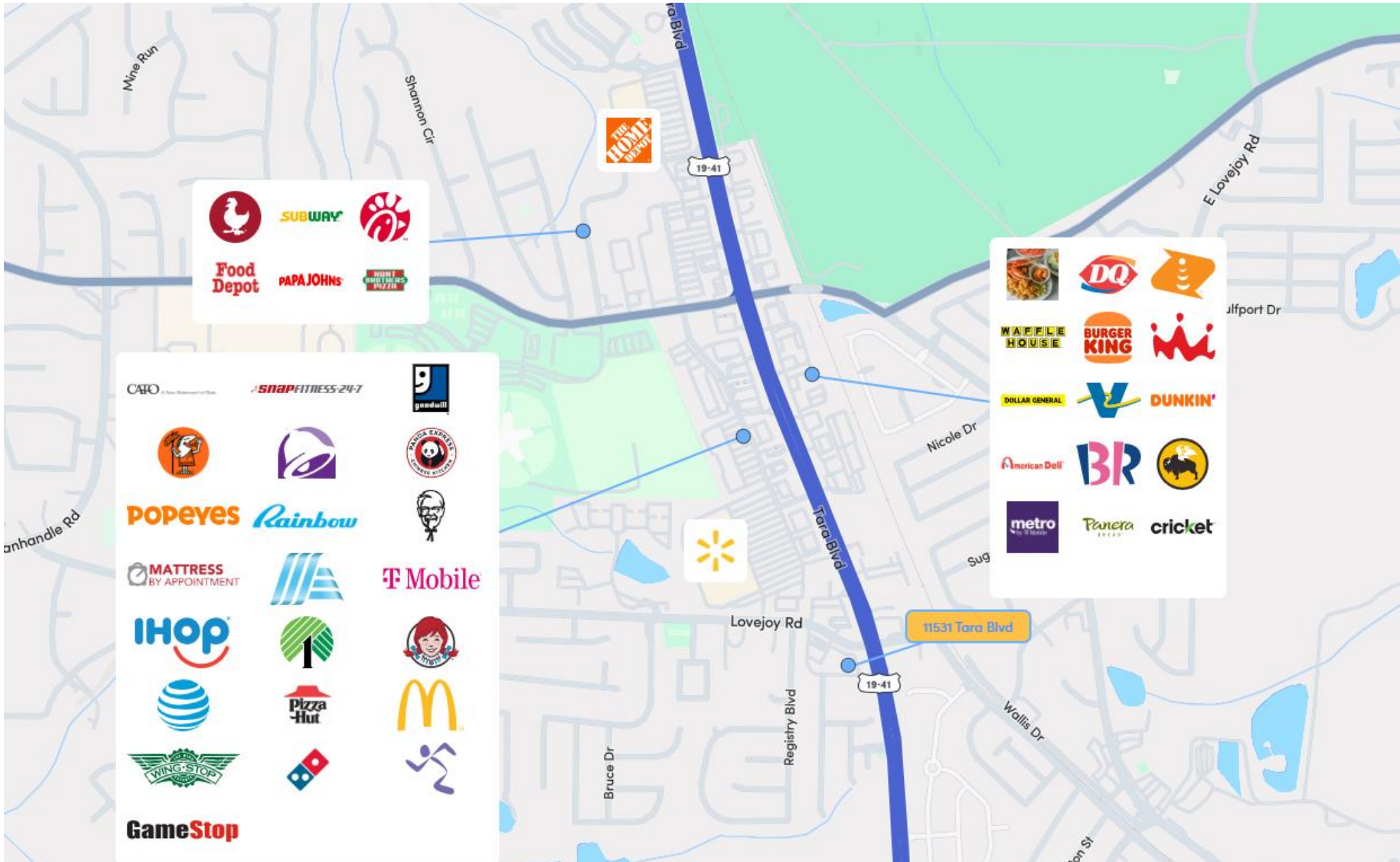
Household 2024

1 MILE	3,018
3 MILE	11,261
5 MILE	25,585



Household  
Income

1 MILE	\$70,000
3 MILE	\$80,600
5 MILE	\$91,100



## 11531 TARA BOULEVARD

Trade Area Overview

