

FOR LEASE
\$20.00/SF Gross

±1,253 SF - West Bridge Office

1025 SW Martin Downs Blvd., Palm City, FL 34990



Presented By:

NAI Southcoast

Douglas Legler

Principal | Broker Associate

+1 772 405 7778

douglas@naisouthcoast.com

Casey Combs

Broker Associate

+1 772 285 8769

ccombs@naisouthcoast.com



Property Details

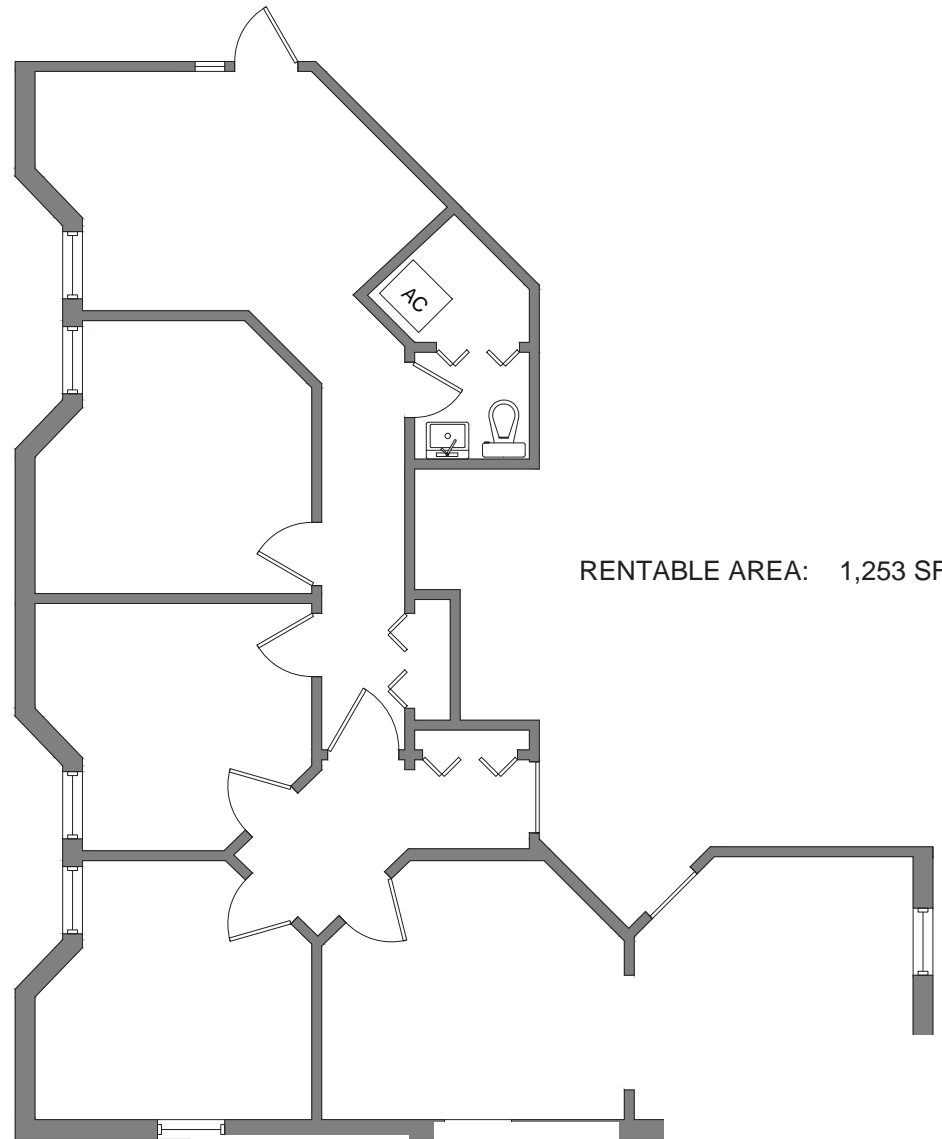
Location:	1025 SW Martin Downs Blvd. Palm City, FL 34990
Space Available:	1,253 SF
Lease Rate:	\$20.00/SF Gross
Traffic Count:	41,000 AADT

Property Overview

Positioned prominently at 1025 SW Martin Downs Blvd. in Palm City, FL, this newly available corner office suite offers 1,253 square feet of prime professional space. With a high visibility location on one of the area's most traveled corridors—boasting a traffic count of 41,000 AADT—this property provides an exceptional opportunity for businesses seeking exposure and convenience. The suite features a professional layout ideal for a range of office uses.

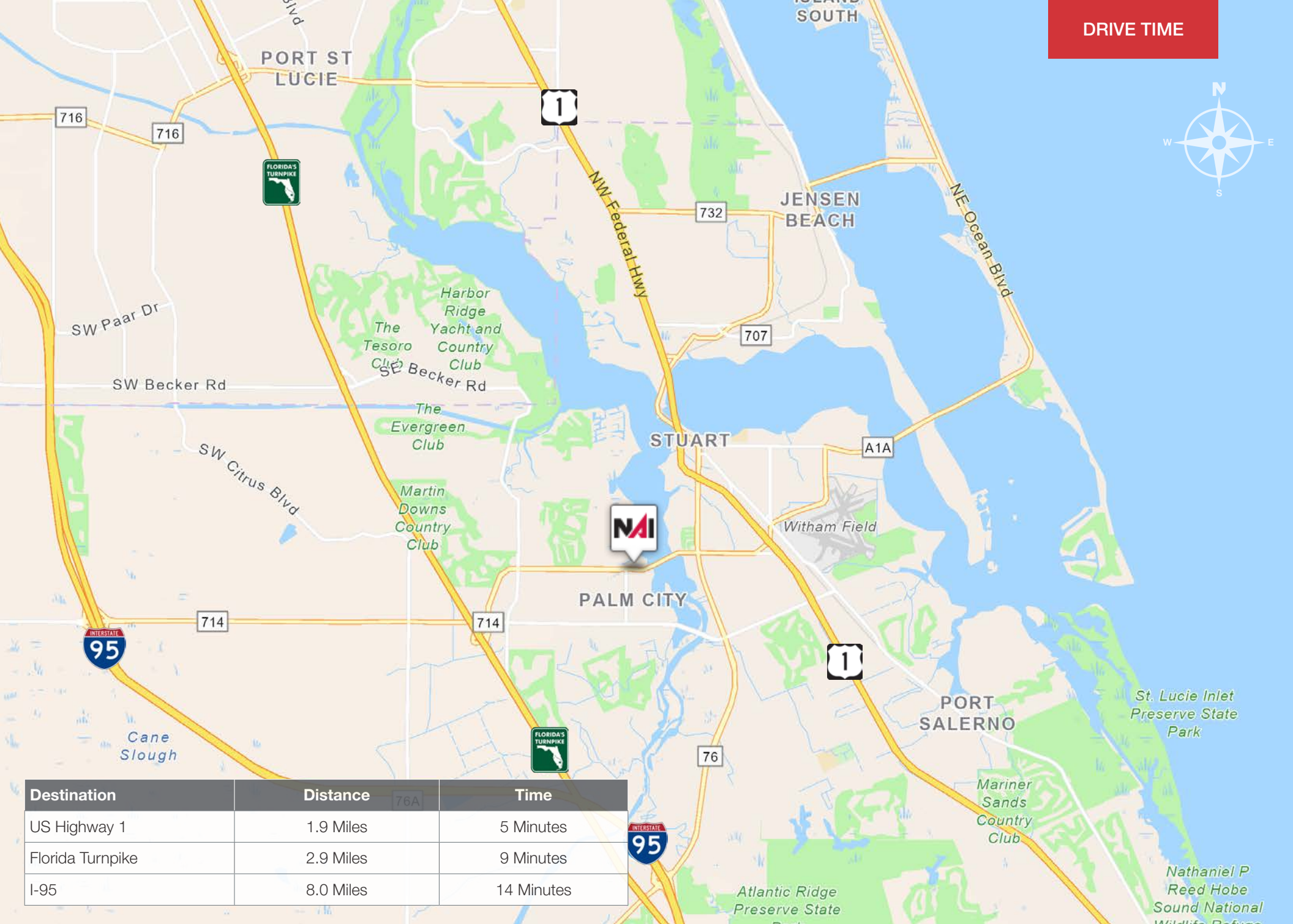
Surrounded by a thriving mix of professional offices, local restaurants, and both national and local retailers, the property benefits from strong foot and vehicle traffic and is easily accessible to both clients and staff. This location offers a strategic presence in the heart of Palm City's commercial district, making it a compelling choice for businesses aiming to establish or expand their footprint in a well-connected, high-demand area.



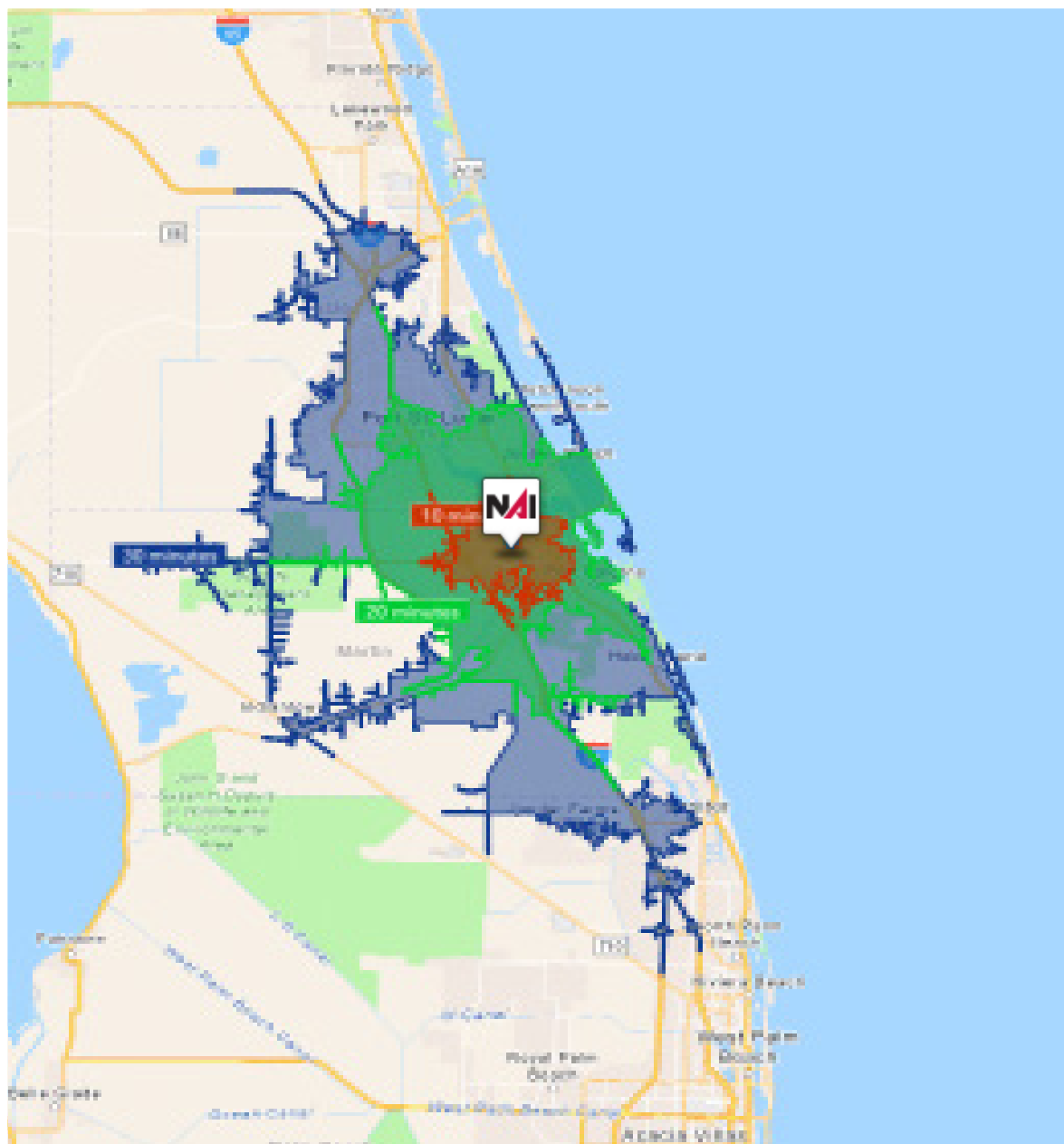








Destination	Distance	Time
US Highway 1	1.9 Miles	5 Minutes
Florida Turnpike	2.9 Miles	9 Minutes
I-95	8.0 Miles	14 Minutes



10 Minutes

44,328
2010 Population

51,483
2025 Population

16.1%
2010-2025
Population Growth

0.39%
2025-2030 (Annual)
Est. Population Growth

49.3
2025 Median Age

\$112,085
Average Household
Income

50.9%
Percentage with
Associates Degree
or Better

61.3%
Percentage in White
Collar Profession

20 Minutes

184,104
2010 Population

226,524
2025 Population

23.0%
2010-2025
Population Growth

1.43%
2025-2030 (Annual)
Est. Population Growth

49.0
2025 Median Age

\$113,977
Average Household
Income

46.5%
Percentage with
Associates Degree
or Better

58.9%
Percentage in White
Collar Profession

30 Minutes

350,998
2010 Population

453,606
2025 Population

29.2%
2010-2025
Population Growth

1.77%
2025-2030 (Annual)
Est. Population Growth

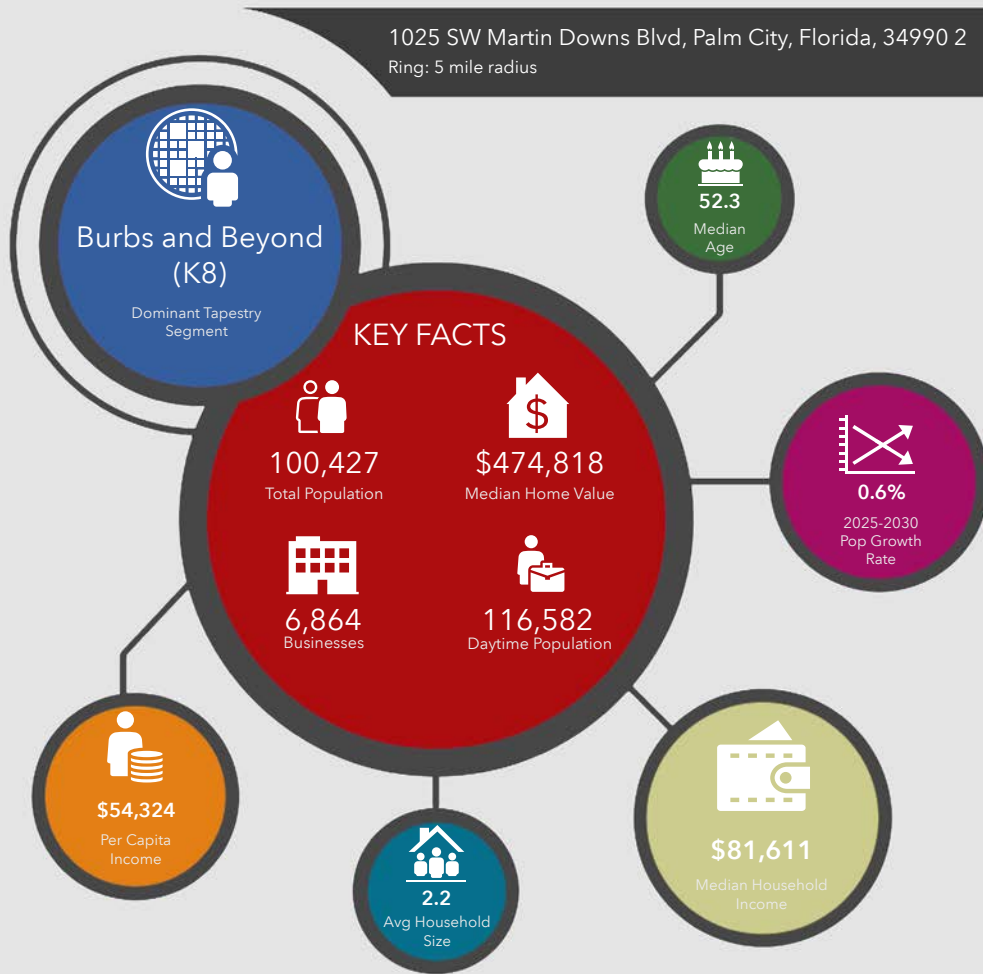
48.7
2025 Median Age

\$111,924
Average Household
Income

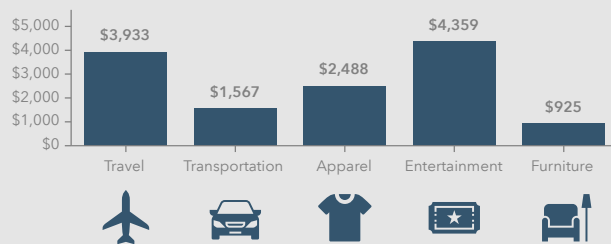
45.6%
Percentage with
Associates Degree
or Better

60.2%
Percentage in White
Collar Profession

1025 SW Martin Downs Blvd, Palm City, Florida, 34990 2
Ring: 5 mile radius



KEY SPENDING FACTS



NAISouthcoast
COMMERCIAL REAL ESTATE SERVICES WORLDWIDE

Source: This infographic contains data provided by Esri (2025, 2030), Esri-Data Axle (2025), Esri-U.S. BLS (2025).

© 2025 Esri

Spending facts are average annual dollars per household

Population

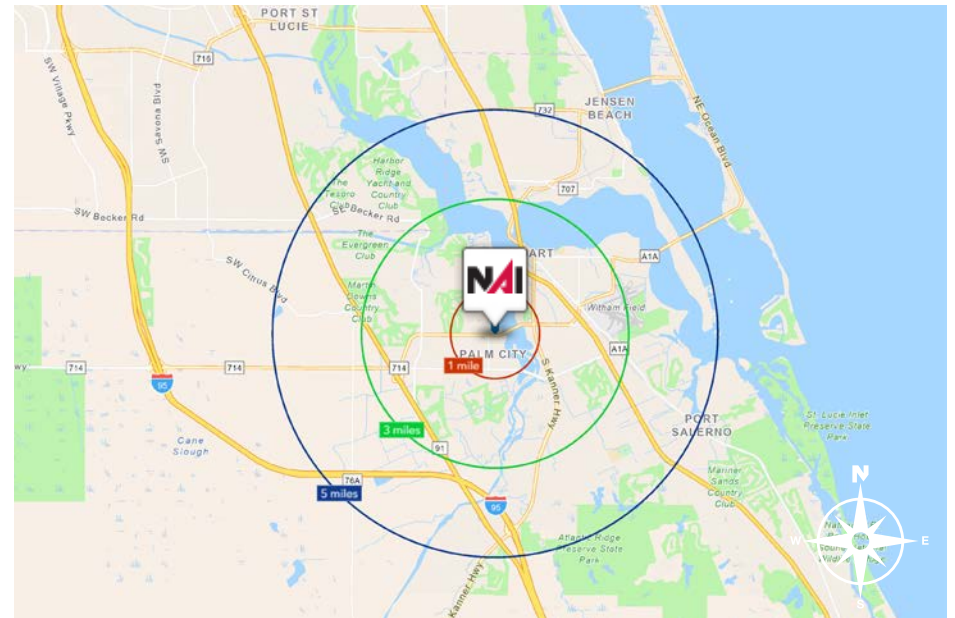
1 Mile:	6,204
3 Mile:	48,515
5 Mile:	100,427

Average Household Income

1 Mile:	\$106,673
3 Mile:	\$119,611
5 Mile:	\$122,500

Median Age

1 Mile:	55.8
3 Mile:	51.1
5 Mile:	52.3



Palm City, Florida

Palm City, situated in Martin County, Florida, is a captivating blend of natural beauty and suburban charm. Nestled along the St. Lucie River, this scenic town offers a tranquil escape from the bustling cities nearby. Renowned for its lush landscapes, Palm City showcases an array of palm trees and well-manicured greenery, painting a picturesque backdrop against the Florida sky.

The community prides itself on a family-friendly atmosphere, with top-rated schools, safe neighborhoods, and a strong sense of camaraderie. Residents enjoy a range of recreational opportunities, including boating, fishing, and golfing, thanks to the area's proximity to water bodies and golf courses. The historic downtown area exudes a quaint ambiance, hosting local boutiques, eateries, and cultural events that reflect the town's unique character.

Palm City's location offers easy access to both the Atlantic Coast and the Gulf of Mexico, making it a haven for water enthusiasts and nature lovers. The warm climate ensures year-round outdoor enjoyment, while the town's commitment to preserving its natural surroundings contributes to a sustainable and eco-friendly lifestyle.

Palm City, Florida, is more than just a location; it's a lifestyle embraced by those who value a balance between nature's splendor and modern comforts. Whether you seek serene landscapes, engaging community activities, or a peaceful haven to call home, Palm City invites you to experience its one-of-a-kind charm.

Martin County, Florida

The cities that make up Martin County include Jensen Beach/Rio, Stuart/Sewall's Point, Hutchinson Island, Hobe Sound, Jupiter/ Tequesta, Palm City, Port Salerno and Indiantown. Martin County is a wonderful place to visit and live, with beaches, golf, fishing and boating. The County boasts arts, quaint downtowns with shops, gourmet dining, galleries, museums, historic places, festivals and more.

Martin County is for...

The golf enthusiast... Martin County is home to over 35 world-class golf courses all within a 15-mile radius. The sun worshiper... The County offers its visitors and residents alike some of the finest beaches on the east coast. The discriminating arts shopper... More than 20 galleries participate in a monthly First Thursday gallery night. Many of these galleries are in the historic downtowns of Stuart, Jensen Beach, Port Salerno and Hobe Sound. The music lover... The historic Lyric Theatre offers a wide-array of first class talent nearly 300 days a year... This acoustically amazing theatre features concerts for all music lovers, from classical to rock and roll, and theatrical performances by local and national talent.

Mark your calendars for a plethora of events to look forward to in Martin County, Florida. The Stuart Air Show, Stuart Boat Show, ArtsFest, and the Martin County Fair are just some of the many events taking place throughout the year. The Treasure Coast Children's Museum, located at Indian Riverside Park, is a great place for kids and families, offering a water play area, fishing, and a riverfront view. Often, there are events in the park including concerts, orchid shows, and more. Indian Riverside Park also features the Maritime and Yachting Museum. Hutchinson Island is home to the Elliott Museum which celebrates the genius of innovation, creativity and the historical events of Martin County. Named after the prolific inventor Sterling Elliott, the museum hosts permanent exhibits showcasing Model A Trucks, early transportation, the history of Stuart and its surrounding regions, and baseball memorabilia. For the scientifically minded and curious kids, the Florida Oceanographic Coastal Center offers fun opportunities to learn about our local ecosystem.





Douglas Legler
Principal | Broker Associate
+1 772 405 7778
douglas@naisouthcoast.com



Casey Combs
Broker Associate
+1 772 285 8769
ccombs@naisouthcoast.com

±1,253 SF - West Bridge Office
1025 SW Martin Downs Blvd., Palm City, FL 34990

FOR LEASE:
\$20.00/SF Gross