

**6213 KINGSTON PIKE**  
**KNOXVILLE, TN**



**RESTAURANT/ BAR SPACE AVAILABLE FOR LEASE**

**Property Information**

- ◆ **1,292 Sq. Ft.**
- ◆ **\$34 PSF NNN plus prorata share of utilities**
- ◆ **Estimated NNN: \$4 PSF**
- ◆ **Traffic Count: 28,974 Kingston Pike; 209,711 I-40/I-75; 22,350 S Northshore Drive**
- ◆ **Retail Nearby: First Watch, Freddy's, CAVA, Whole Foods, REI, Ulta, Food City**
- ◆ **Demographics:**

	<b><u>1-Mile</u></b>	<b><u>3-Mile</u></b>	<b><u>5-Mile</u></b>
Population:	5,171	50,455	152,366
Avg Household Income:	\$125,677	\$103,248	\$89,687

**Crosse Smith**

**7216 Wellington Drive, Suite One**  
**Knoxville, Tennessee 37919**

**Office: (865) 584-2000 Cell: (865) 898-2920**

**Email: crosse@oliversmithrealty.com**

**Ethan Davenport**

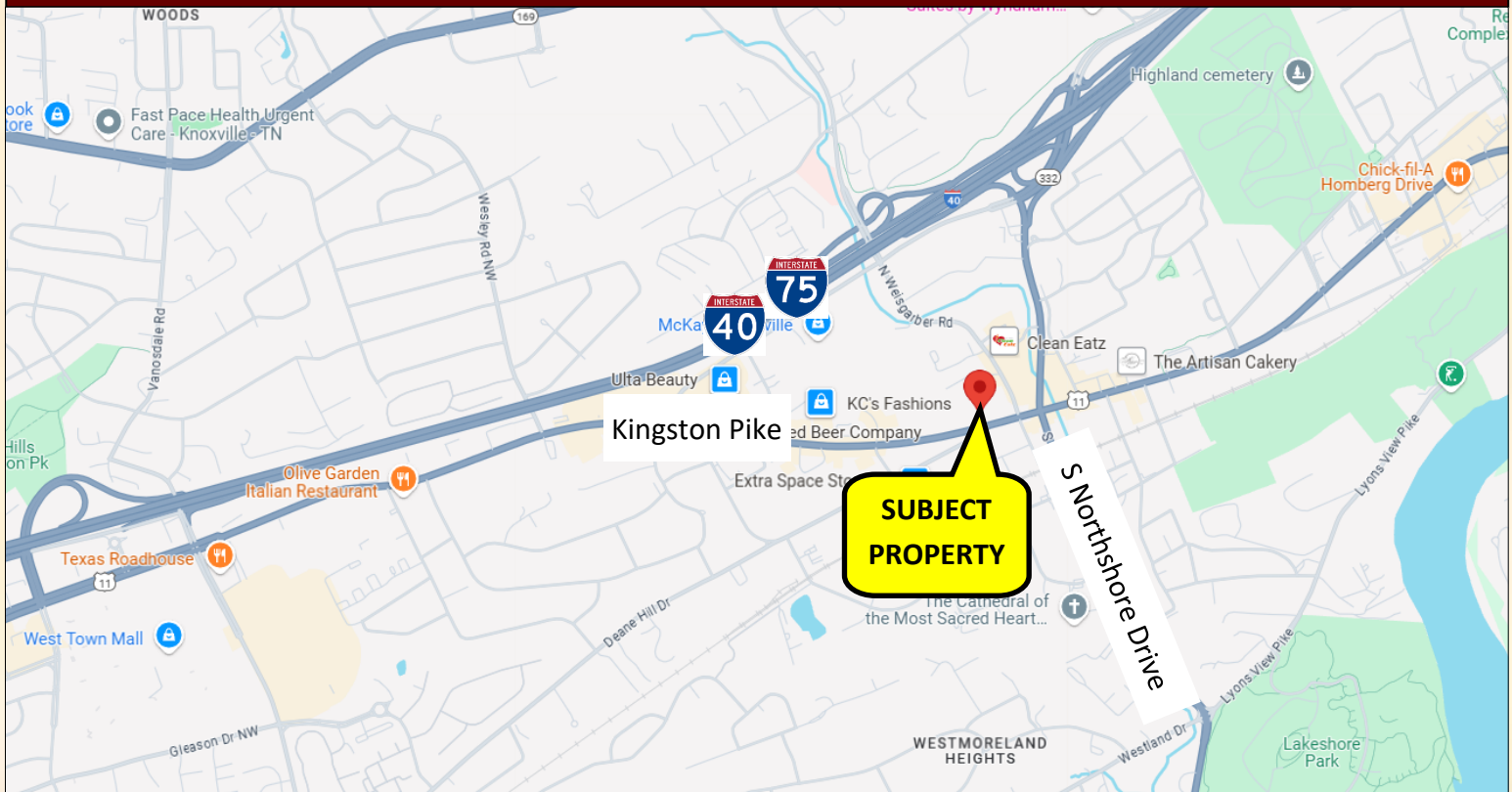
**7216 Wellington Drive, Suite One**  
**Knoxville, Tennessee 37919**

**Office: (865) 584-2000 Cell: (423) 871-3991**

**Email: ethan@oliversmithrealty.com**



## **Regional Map**



**Crosse Smith**

7216 Wellington Drive, Suite One  
Knoxville, Tennessee 37919

Office: (865) 584-2000 Cell: (865) 898-2920

Email: [crosse@oliversmithrealty.com](mailto:crosse@oliversmithrealty.com)

**Ethan Davenport**

7216 Wellington Drive, Suite One  
Knoxville, Tennessee 37919

Office: (865) 584-2000 Cell: (423) 871-3991

Email: [ethan@oliversmithrealty.com](mailto:ethan@oliversmithrealty.com)



## Trade Area Aerial





**Site**



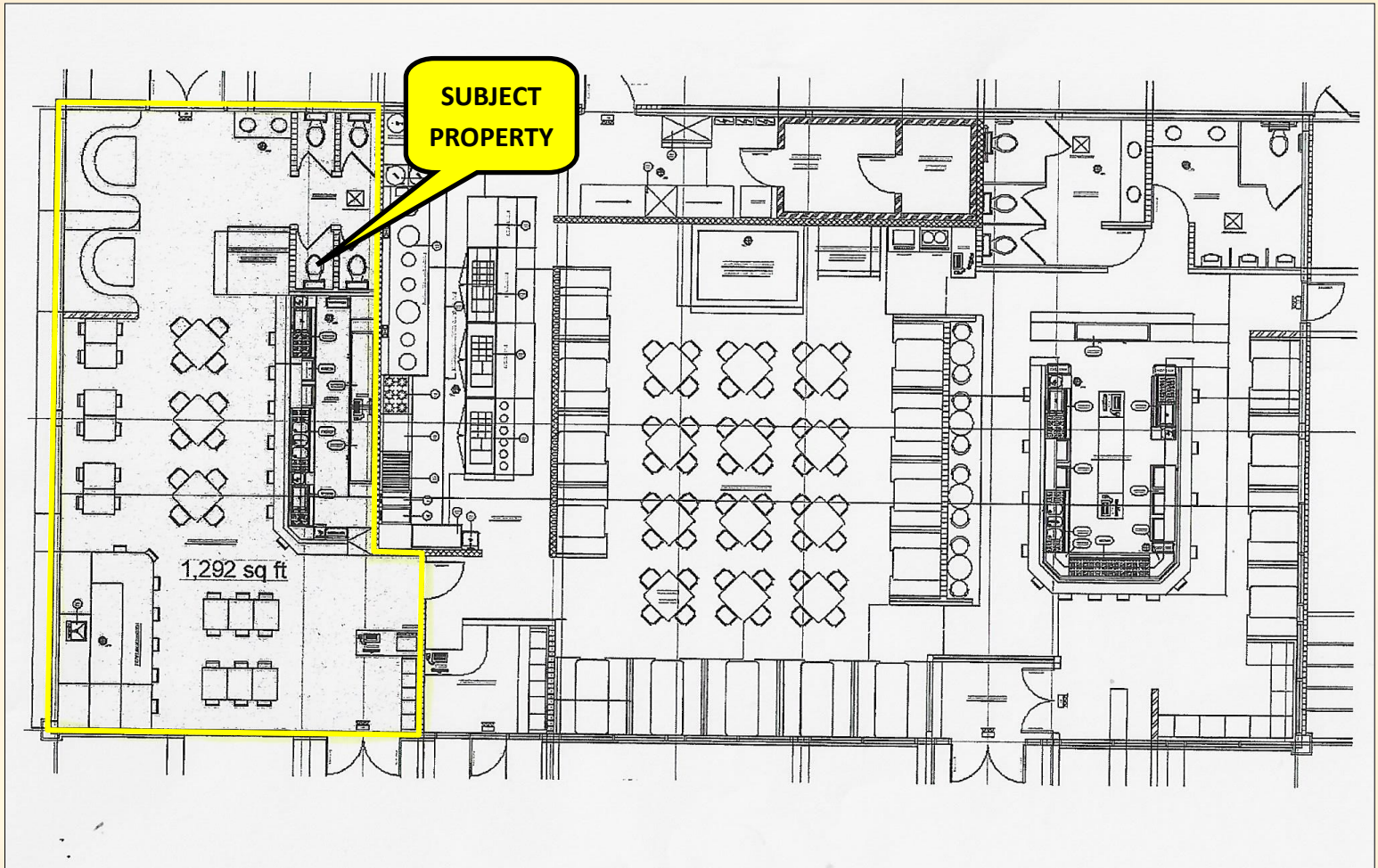
**Crosse Smith**

7216 Wellington Drive, Suite One  
Knoxville, Tennessee 37919  
Office: (865) 584-2000 Cell: (865) 898-2920  
Email: [crosse@oliversmithrealty.com](mailto:crosse@oliversmithrealty.com)

**Ethan Davenport**

7216 Wellington Drive, Suite One  
Knoxville, Tennessee 37919  
Office: (865) 584-2000 Cell: (423) 871-3991  
Email: [ethan@oliversmithrealty.com](mailto:ethan@oliversmithrealty.com)

**Floor Plans**



**Crosse Smith**

7216 Wellington Drive, Suite One

Knoxville, Tennessee 37919

Office: (865) 584-2000 Cell: (865) 898-2920

Email: crosse@oliversmithrealty.com

**Ethan Davenport**

7216 Wellington Drive, Suite One

Knoxville, Tennessee 37919

Office: (865) 584-2000 Cell: (423) 871-3991

Email: ethan@oliversmithrealty.com



**Elevations**



**Crosse Smith**

7216 Wellington Drive, Suite One

Knoxville, Tennessee 37919

Office: (865) 584-2000 Cell: (865) 898-2920

Email: [crosse@oliversmithrealty.com](mailto:crosse@oliversmithrealty.com)

**Ethan Davenport**

7216 Wellington Drive, Suite One

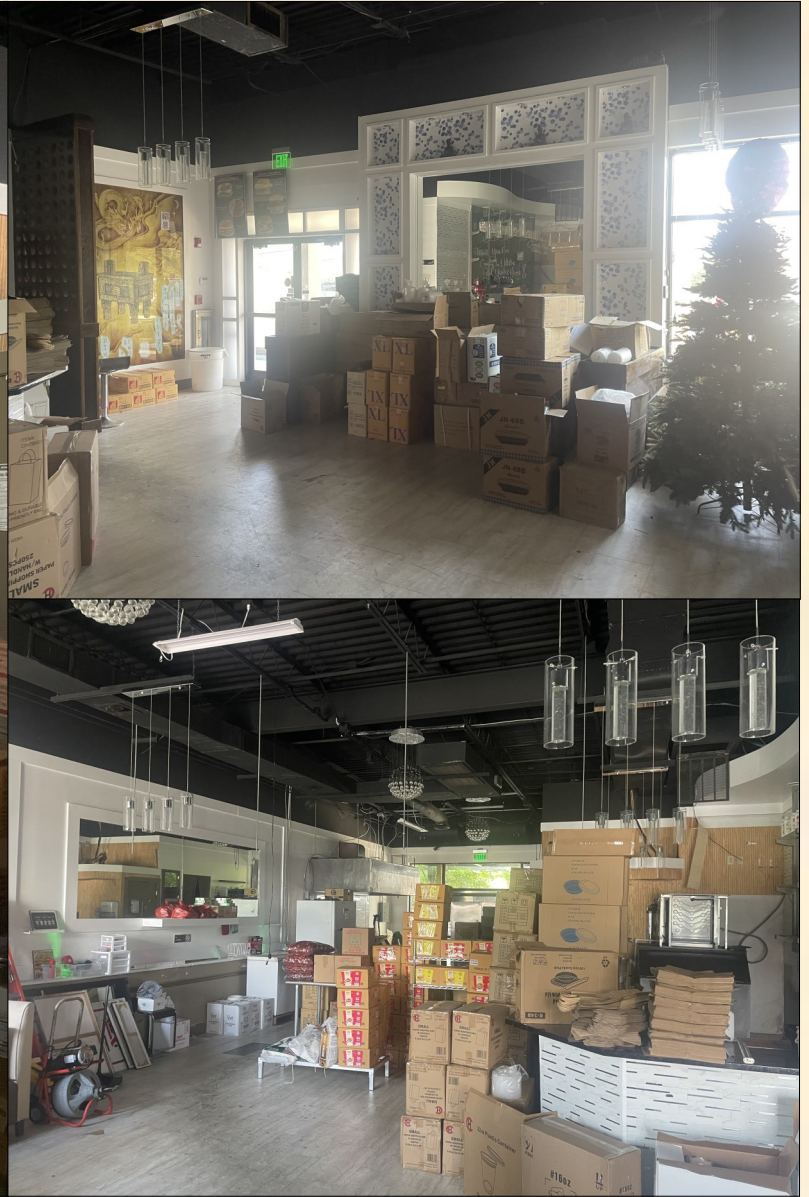
Knoxville, Tennessee 37919

Office: (865) 584-2000 Cell: (423) 871-3991

Email: [ethan@oliversmithrealty.com](mailto:ethan@oliversmithrealty.com)



**Interior Photos**



**Crosse Smith**

7216 Wellington Drive, Suite One

Knoxville, Tennessee 37919

Office: (865) 584-2000 Cell: (865) 898-2920

Email: [crosse@oliversmithrealty.com](mailto:crosse@oliversmithrealty.com)

**Ethan Davenport**

7216 Wellington Drive, Suite One

Knoxville, Tennessee 37919

Office: (865) 584-2000 Cell: (423) 871-3991

Email: [ethan@oliversmithrealty.com](mailto:ethan@oliversmithrealty.com)



**Rear Exterior Photos**



**Crosse Smith**

7216 Wellington Drive, Suite One

Knoxville, Tennessee 37919

Office: (865) 584-2000 Cell: (865) 898-2920

Email: [crosse@oliversmithrealty.com](mailto:crosse@oliversmithrealty.com)

**Ethan Davenport**

7216 Wellington Drive, Suite One

Knoxville, Tennessee 37919

Office: (865) 584-2000 Cell: (423) 871-3991

Email: [ethan@oliversmithrealty.com](mailto:ethan@oliversmithrealty.com)



## **Demographics**

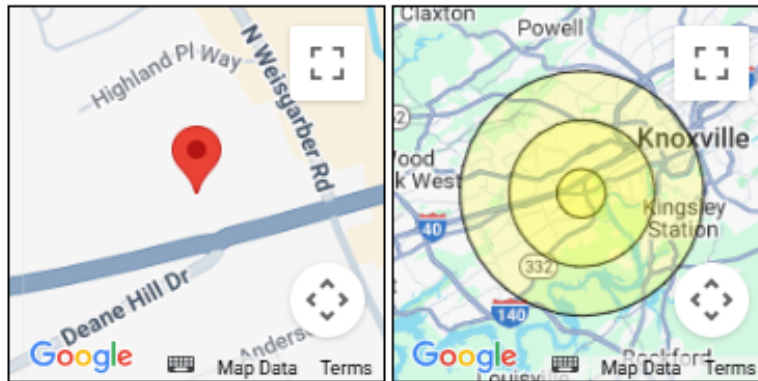


### **EASI Updated Site Selection Reports & Analysis** **Executive Summary**

Address: 6213 Kingston Pike Knoxville TN

Latitude: 35° : 55' : 58"

Longitude: -84° : 00' : 17"



Description	1 Miles	3 Miles	5 Miles
<b>POPULATION BY YEAR</b>			
Population (4/1/2000)	5,195	43,532	122,445
Population (4/1/2010)	5,222	45,093	134,985
Population (4/1/2020)	4,975	48,184	145,094
Population (1/1/2024)	5,171	50,455	152,366
Population (1/1/2029)	5,449	53,181	160,217
Percent Growth (2024/2020)	3.94	4.71	5.01
Percent Forecast (2029/2024)	5.38	5.40	5.15
<b>HOUSEHOLDS BY YEAR</b>			
Households (4/1/2000)	2,491	20,407	51,875
Households (4/1/2010)	2,452	21,175	56,482
Households (4/1/2020)	2,254	22,260	59,471
Households (1/1/2024)	2,398	23,863	63,877
Households (1/1/2029)	2,558	25,428	68,031
Percent Growth (2024/2020)	6.39	7.20	7.41
Percent Forecast (2029/2024)	6.67	6.56	6.50
<b>GENERAL POPULATION CHARACTERISTICS</b>			
Median Age	34.8	37.1	32.4
Male	2,577	23,883	74,221
Female	2,594	26,572	78,145
Density	1,498.7	1,929.9	2,183.5
Urban	5,171	50,439	151,590
Rural	0	16	776

**Crosse Smith**

7216 Wellington Drive, Suite One

Knoxville, Tennessee 37919

Office: (865) 584-2000 Cell: (865) 898-2920

Email: crosse@oliversmithrealty.com

**Ethan Davenport**

7216 Wellington Drive, Suite One

Knoxville, Tennessee 37919

Office: (865) 584-2000 Cell: (423) 871-3991

Email: ethan@oliversmithrealty.com



# Oliver Smith Realty & Development Co.

www.oliversmithrealty.com

## Demographics

<b>GENERAL HOUSEHOLD CHARACTERISTICS</b>			
Households (1/1/2024)	2,398	23,863	63,877
Families	1,326	12,635	34,816
Non-Family Households	1,072	11,228	29,061
Average Size of Household	2.11	2.08	2.23
Median Age of Householder	45.9	47.4	46.4
Median Value Owner Occupied (\$)	462,195	304,213	262,086
Median Rent (\$)	907	967	950
Median Vehicles Per Household	2.0	2.1	2.2
<b>GENERAL HOUSING CHARACTERISTICS</b>			
Housing, Units	2,553	25,468	68,599
Housing, Owner Occupied	1,293	12,238	34,030
Housing, Renter Occupied	1,105	11,625	29,847
Housing, Vacant	155	1,605	4,722
<b>POPULATION BY RACE</b>			
White Alone	3,883	38,695	111,590
Black Alone	392	3,903	14,763
Asian Alone	428	2,061	5,772
American Indian and Alaska Native Alone	6	149	712
Other Race Alone	156	1,578	6,922
Two or More Races	306	4,069	12,607
<b>POPULATION BY ETHNICITY</b>			
Hispanic	318	3,282	12,827
White Non-Hispanic	3,792	37,759	108,506
<b>GENERAL INCOME CHARACTERISTICS</b>			
Total Personal Income (\$)	305,518,729	2,485,085,430	5,796,893,129
Total Household Income (\$)	301,372,898	2,463,809,225	5,728,963,166
Median Household Income (\$)	72,095	65,340	61,109
Average Household Income (\$)	125,677	103,248	89,687
Per Capita Income (\$)	59,083	49,254	38,046
<b>RETAIL SALES</b>			
Total Retail Sales (including Food Services) (\$)	342,036	2,425,043	4,681,219
<b>CONSUMER EXPENDITURES</b>			
Total Annual Expenditures (\$000)	180,766.2	1,660,323.5	4,271,702.4
<b>EMPLOYMENT BY PLACE OF BUSINESS</b>			
Employees, Total (by Place of Work)	4,836	43,952	87,855
Establishments, Total (by Place of Work)	302	2,215	4,655
<b>EASI QUALITY OF LIFE</b>			
EASI Quality of Life Index (US Avg=100)	104	103	102
EASI Total Crime Index (US Avg=100; A=High)	111	106	108
EASI Weather Index (US Avg=100)	106	106	106
BLOCK GROUP COUNT	4	32	92

**Crosse Smith**

7216 Wellington Drive, Suite One

Knoxville, Tennessee 37919

Office: (865) 584-2000 Cell: (865) 898-2920

Email: crosse@oliversmithrealty.com

**Ethan Davenport**

7216 Wellington Drive, Suite One

Knoxville, Tennessee 37919

Office: (865) 584-2000 Cell: (423) 871-3991

Email: ethan@oliversmithrealty.com



## **Disclosure**

This is a confidential Memorandum intended solely for your limited use and benefit in determining whether you desire to express further interest in the acquisition of the Property. The information contained in the following Memorandum is proprietary and strictly confidential. It is intended to be reviewed only by the party receiving it from Oliver Smith Realty & Development Company Inc. and should not be made available to any other person or entity without the written consent of Oliver Smith Realty & Development Co. Inc. This Memorandum has been prepared to provide summary, unverified information to prospective purchasers, and to establish only a preliminary level of interest in the subject property. The information contained herein is not a substitute for a thorough due diligence investigation. All financial projections and information are provided for general reference purposes only and are based on assumptions relating to the general economy, market conditions, competition and other factors beyond the control of the Owner and Oliver Smith Realty & Development Co. Inc. Therefore, all projections, assumptions and other information provided and made herein are subject to material. In this Memorandum, certain documents, including leases and other materials, are described in summary form. These summaries do not purport to be complete nor necessarily accurate descriptions of the full agreements referenced. Interested parties are expected to review all such summaries and other documents of whatever nature independently and not rely on the contents of this Memorandum in any manner. Oliver Smith Realty & Development Co. Inc. has not made any investigation, and makes no warranty or representation, with respect to the income or expenses for the subject property, the future projected financial performance of the property, the size and square footage of the property and improvements, the presence or absence of contaminating substances, PCB's or asbestos, the compliance with State and Federal regulations, the physical condition of the improvements thereon, or the financial condition or business prospects of any tenant, or any tenant's plans or intentions to continue its occupancy of the subject property. The Owner expressly reserves the right, at its sole discretion, to reject any or all expressions of interest or offers to purchase or lease the Property, and/or to terminate discussions with any entity at any time with or without notice which may arise as a result of review of this Memorandum. The Owner shall have no legal commitment or obligation to any entity reviewing this Memorandum or making an offer to purchase the Property unless and until written agreement(s) for the purchase or lease of the Property have been fully executed, delivered and approved by the Owner and any conditions to the Owner's obligations therein have been satisfied. Photos herein are the property of their respective owners and use of these images without the express written consent of the Owner is prohibited. Recipient also agrees not use this Memorandum or any of its contents in any manner detrimental to the interest of the Owner or Oliver Smith Realty & Development Co. Inc. The information contained in this Memorandum has been obtained from sources we believe to be reliable; however, Oliver Smith Realty & Development Co. Inc. has not verified, and will not verify, any of the information contained herein, nor has Oliver Smith Realty & Development Co. Inc. conducted any investigation regarding these matters and makes no warranty or representation whatsoever regarding the accuracy or completeness of the information provided. All potential buyers must take appropriate measures and efforts to verify all the information set forth herein or provided by Oliver Smith Realty & Development Co. Inc.

### **Crosse Smith**

**7216 Wellington Drive, Suite One**

**Knoxville, Tennessee 37919**

**Office: (865) 584-2000 Cell: (865) 898-2920**

**Email: crosse@oliversmithrealty.com**

### **Ethan Davenport**

**7216 Wellington Drive, Suite One**

**Knoxville, Tennessee 37919**

**Office: (865) 584-2000 Cell: (423) 871-3991**

**Email: ethan@oliversmithrealty.com**