



COMMERCIAL REALTY SOLUTIONS

For Sale / Lease
Industrial
Condo's



WAVERLY

Business Park

Sales Price: \$220,000.00 Lease Rate: \$10.00/psf

Building: 9,000/sf (1,800/sf each)

126 6th St South, Waverly, MN 55390

Sheila Zachman, Broker
763.244.0600
SZachman@Crs-Mn.com



PROPERTY LOCATION

- * South of Highway 12
- * East of County Road 8
- * Businesses in the Area:
Citizens State Bank, Wolf Auto Parts, Waverly City Hall,
US Post Office, Domino's Pizza and more...

TRAFFIC COUNTS - 2024

- * Highway 12 - 8,614 VPD
- * County Road 8 - 2,926 VPD



The information contained herein was obtained from sources believed to be reliable, but Commercial Realty Solutions has not verified nor has any knowledge regarding the accuracy of information and makes no representation or warranty concerning the same. Therefore, Commercial Realty Solutions disclaims all liabilities in connection with any inaccuracies or incompleteness. This marketing material is for the implicit use by Commercial Realty Solutions for the marketing of their listings and is not for use by other brokerage(s).

PROPERTY OVERVIEW

126 6th Street South, Waverly, MN

Sales Price

\$220,000.00 / 1,800/sf Condo

Lease Rate

\$10.00/psf NNN

Operating Expenses: \$2.50/psf

Building Size

Building #1 (9,000/sf)

Unit 1 (1,800/sf) - Leased

Unit 2 (1,800/sf) - Available

Unit 3 (1,800/sf) - Leased

Unit 4 (1,800/sf) - Available

Unit 5 (1,800/sf) - Available

Building #2 (11,520/sf)

Unit 6 (2,880/sf) - SOLD

Unit 7 (1,800/sf) - Available

Unit 8 (1,800/sf) - Available

Unit 9 (1,800/sf) - Available

Unit 10 (3,240/sf) - Leased

County

Wright

PIDs

116-043-000001 - \$1,600/mo

116-043-000002 - \$1,600/mo

116-043-000003 - \$1,500/mo

116-043-000004 - \$1,600/mo

116-043-000005 - \$1,600/mo

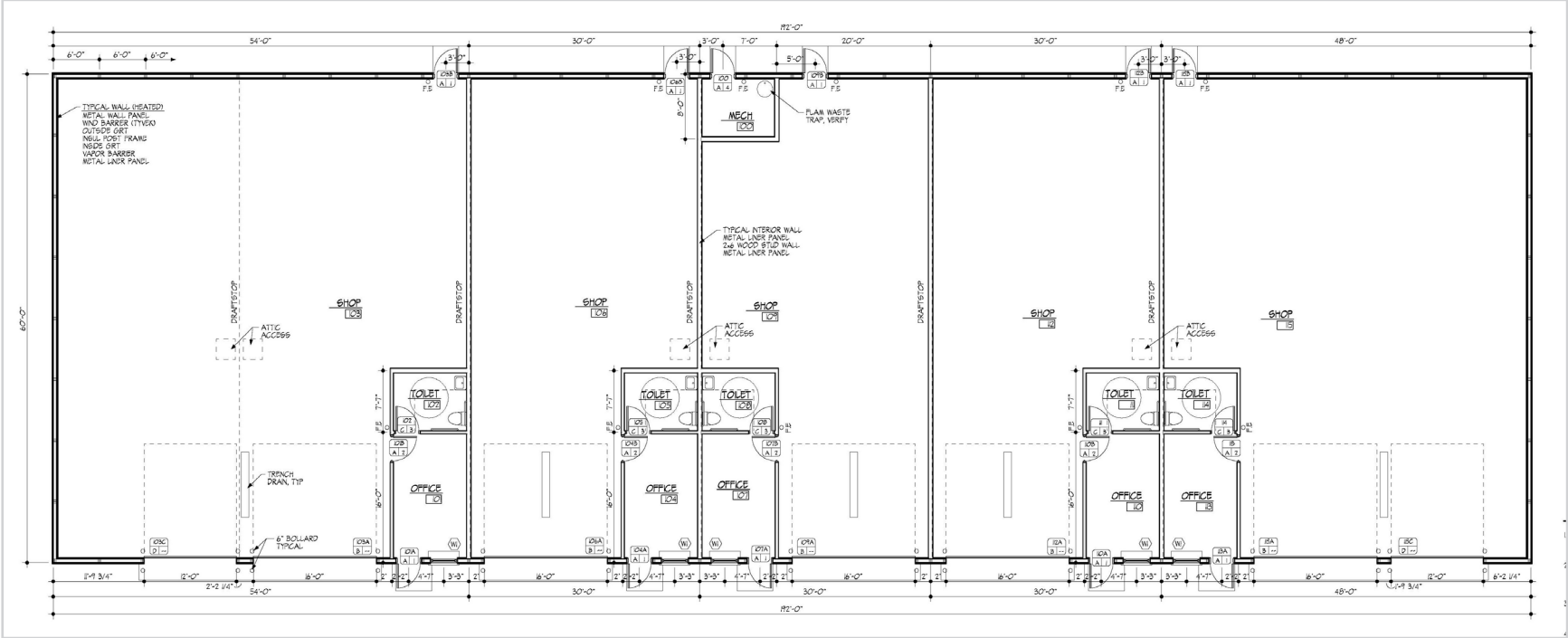
Zoned

I-1 Industrial



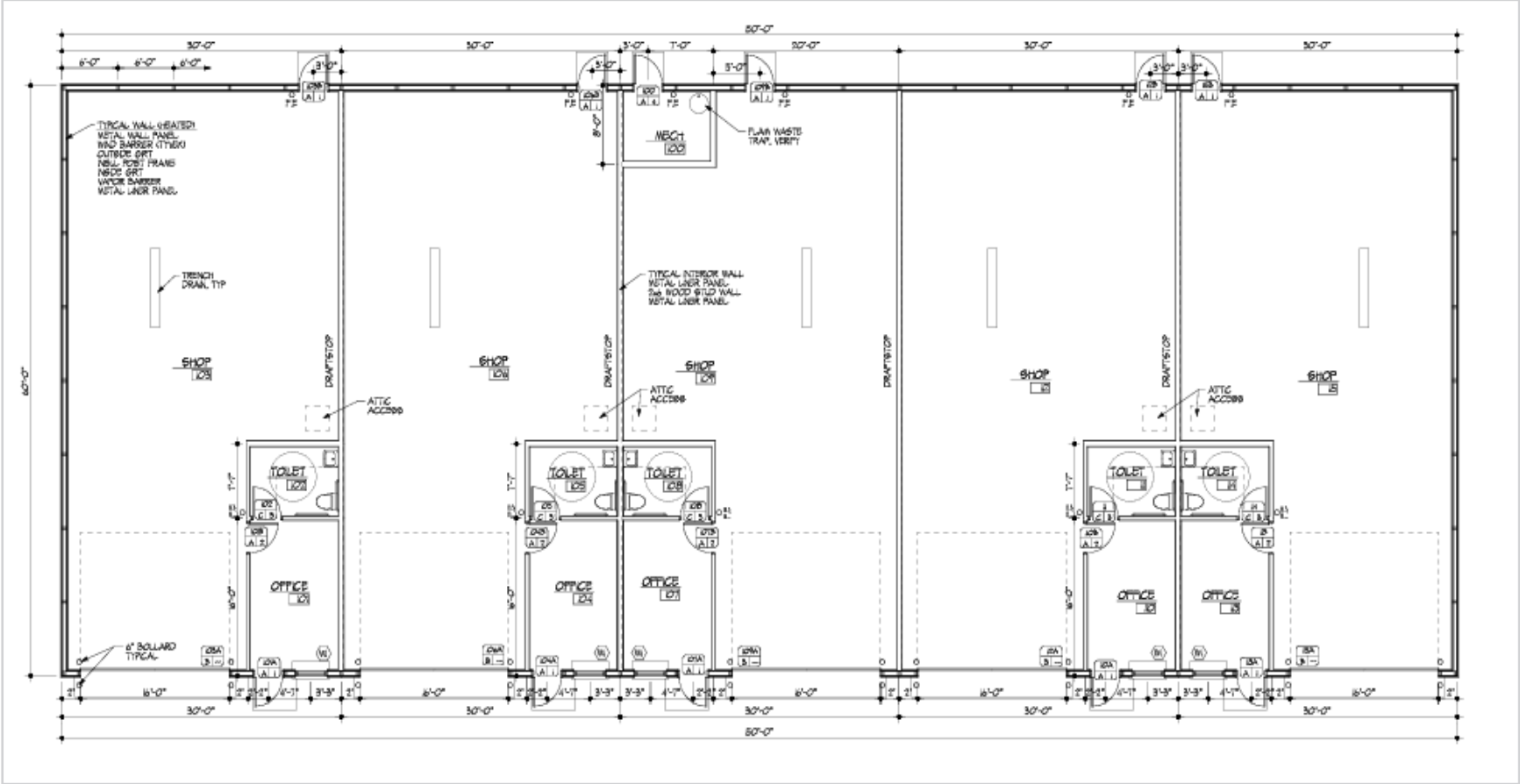
This information has been secured from sources we believe to be reliable, but we make no representations or warranties explained or implied as to the accuracy of the information. Buyer must verify the information and bears all risk for any inaccuracies.

BUILDING PLAN - Larger Building



The information contained herein was obtained from sources believed to be reliable, but Commercial Realty Solutions has not verified nor has any knowledge regarding the accuracy of information and makes no representation or warranty concerning the same. Therefore, Commercial Realty Solutions disclaims all liabilities in connection with any inaccuracies or incompleteness. This marketing material is for the implicit use by Commercial Realty Solutions for the marketing of their listings and is not for use by other brokerage(s).

BUILDING PLAN - Smaller Building



The information contained herein was obtained from sources believed to be reliable, but Commercial Realty Solutions has not verified nor has any knowledge regarding the accuracy of information and makes no representation or warranty concerning the same. Therefore, Commercial Realty Solutions disclaims all liabilities in connection with any inaccuracies or incompleteness. This marketing material is for the implicit use by Commercial Realty Solutions for the marketing of their listings and is not for use by other brokerage(s).

INTERIOR



OFFICE



SHOP

The information contained herein was obtained from sources believed to be reliable, but Commercial Realty Solutions has not verified nor has any knowledge regarding the accuracy of information and makes no representation or warranty concerning the same. Therefore, Commercial Realty Solutions disclaims all liabilities in connection with any inaccuracies or incompleteness. This marketing material is for the implicit use by Commercial Realty Solutions for the marketing of their listings and is not for use by other brokerage(s).

EXTERIOR



* Building 1	9,000/sf Total	Monthly Rent
Suite 1 (1-1)	1,800/sf	LEASED
Suite 2 (1-2)	1,800/sf	\$1,600/mo
Suite 3 (1-3)	1,800/sf	LEASED
Suite 4 (1-4)	1,800/sf	\$1,600/mo
Suite 5 (1-5)	1,800/sf	\$1,600/mo
* Building 2	11,520/sf Total	
Suite 6 (2-1)	2,880/sf	SOLD
Suite 7 (2-2)	1,800/sf	\$1,875/mo
Suite 8 (2-3)	1,800/sf	\$1,875/mo
Suite 9 (2-4)	1,800/sf	\$1,875/mo
Suite 10 (2-5)	3,240/sf	Leased
* Building 3		
To Be Built		
* Building 4		
To Be Built		
* Building 5		
To Be Built		
* Building 6		
To Be Built		

PROPERTY INFORMATION

- * Overhead Doors - (1) One 14' Drive-In
- * Clear Height - 16'
- * 5" Concrete Floors
- * Floor Drains with Flammable Waste Trap
- * Unit Heaters in Warehouse (A/C in Office & Restroom Only)
- * Spray Foam (walls R-26) and (ceiling R-54)
- * Mezzanine (23' x 10')
- * Easy Access
- * Second Building is Under Construction
- * Utilities Separately Metered
- * Post Frame Building