



ONE EVEREST PLACE

1029-1101 E GRAND AVE / ROTHSCILD, WI

INLINE &
OUTPARCELS



MID-AMERICA®
Real Estate-Wisconsin, LLC

ONE EVEREST PLACE

E GRAND AVENUE | ROTHSCHILD, WI

Address

1029-1101 E Grand Avenue
Rothschild, WI 54474

Availability

2,403 SF | 2,611 SF
4,990 SF | 25,218 SF
up to 8,160 SF (Outparcel)
Total GLA: 54,409 SF

Traffic Counts

19,150 VPD on Grand Avenue
43,200 VPD on WI HWY 29

Co-Tenants

**HARBOR
FREIGHT**

**COST
CUTTERS**

**Shopko
Optical**

OLLIE'S
GOOD STUFF CHEAP

DOLLAR TREE

**SALLY
BEAUTY.**



Property Details

- Easily accessible and highly visible from Grand Avenue
- Walking distance from both D.C. Everest Jr. High School and D.C. Everest Sr. High School
- Located 5 miles South of one of the top ski resorts in the Midwest, attracting visitors year-round
- Strong co-tenancy with average tenure of 8+ years

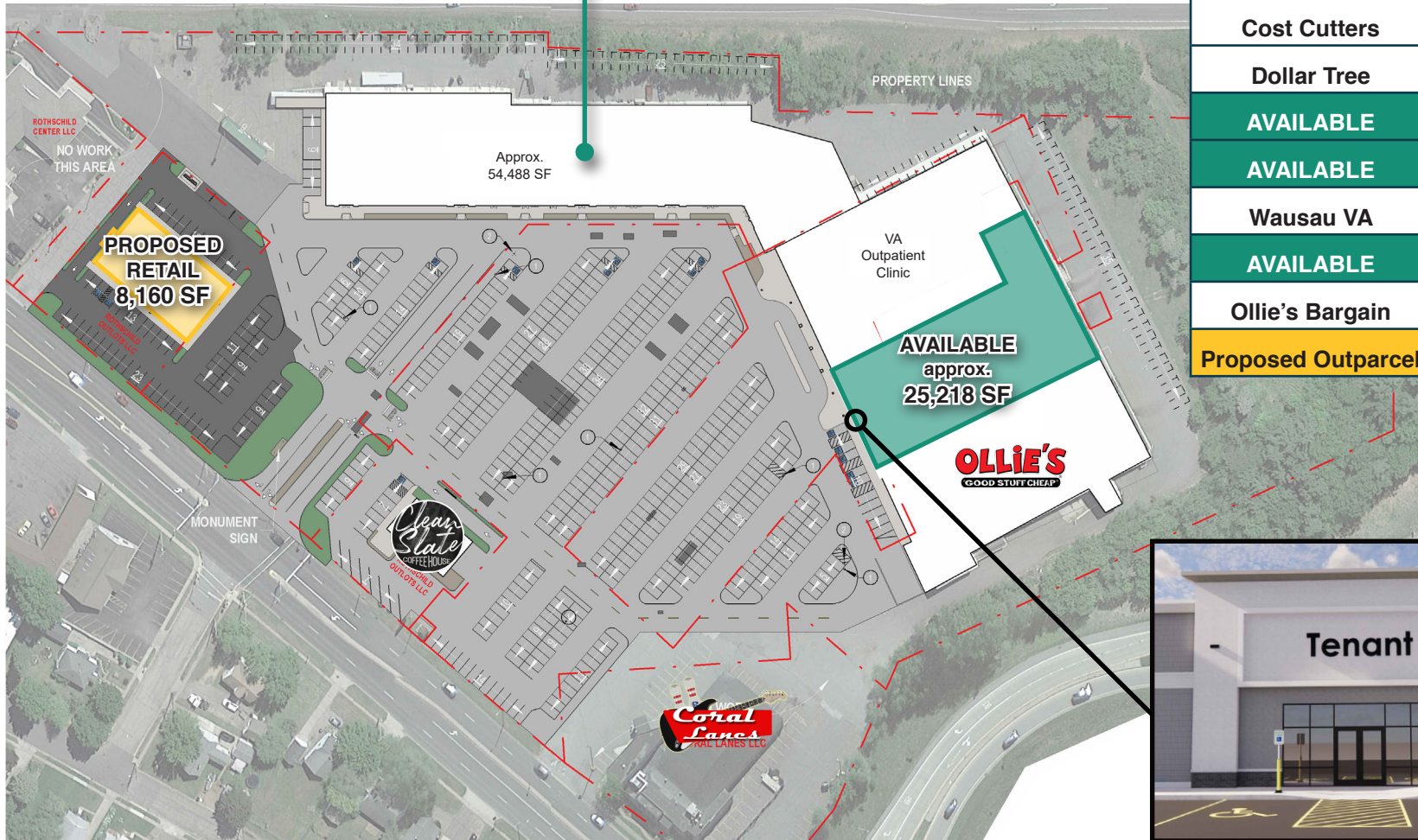
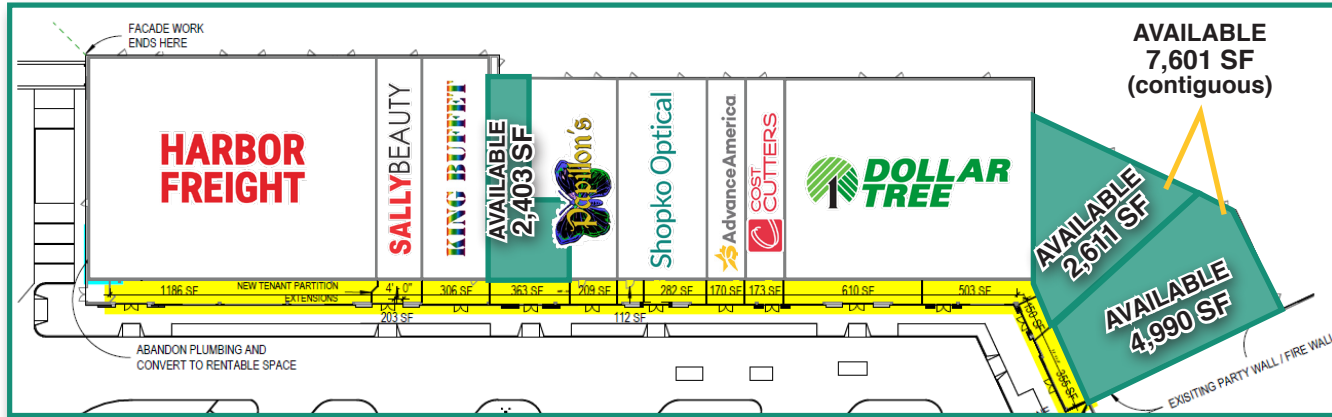
NNN Estimates:

CAM:	\$3.60 PSF
TAX:	\$0.90 PSF
INS:	\$0.20 PSF
TOTAL:	\$4.70 PSF

Demographics

	1 MILE	3 MILES	5 MILES
 POPULATION	4,396	26,288	59,219
 HOUSEHOLDS	2,030	11,187	24,806
 AVG HOUSEHOLD INCOME	\$86,693	\$91,433	\$93,186
 DAYTIME POPULATION	5,624	32,638	76,135

SITE PLAN

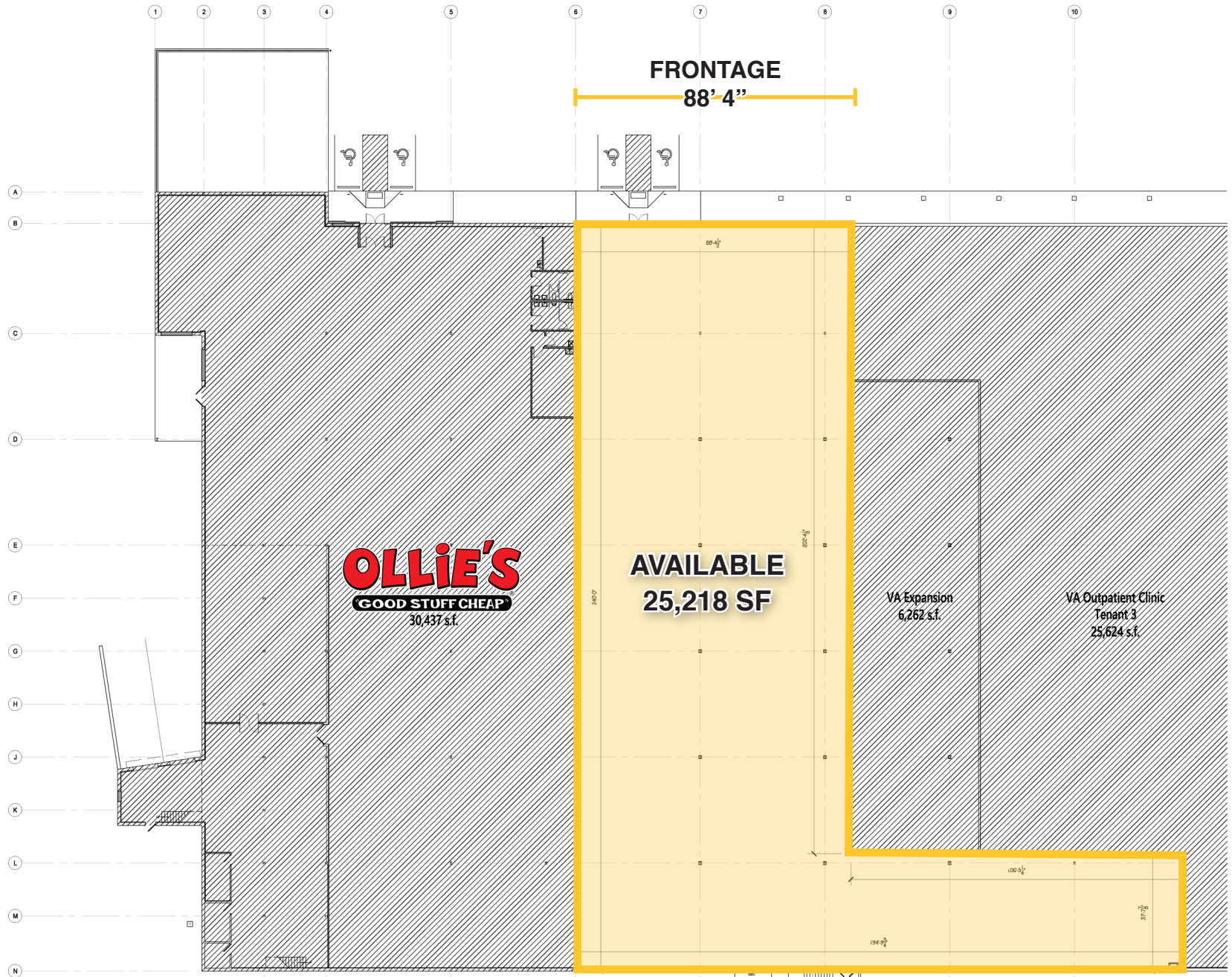


TENANT	SQ FT
Harbor Freight	12,643 SF
Sally Beauty	2,011 SF
King Chinese	2,976 SF
AVAILABLE	2,403 SF
Papillon's	3,100 SF
Shopko Optical	2,461 SF
Advance America	1,533 SF
Cost Cutters	1,485 SF
Dollar Tree	10,230 SF
AVAILABLE	2,611 SF
AVAILABLE	4,990 SF
Wausau VA	31,886 SF
AVAILABLE	25,218 SF
Ollie's Bargain	30,437 SF
Proposed Outparcel	8,160 SF





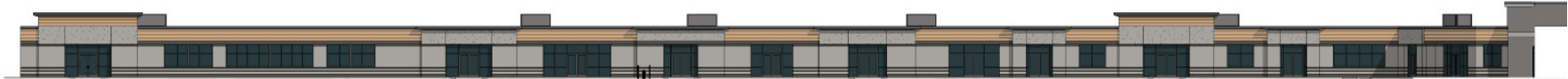
PROPOSED DEMISING PLAN



Overall Floor Plan

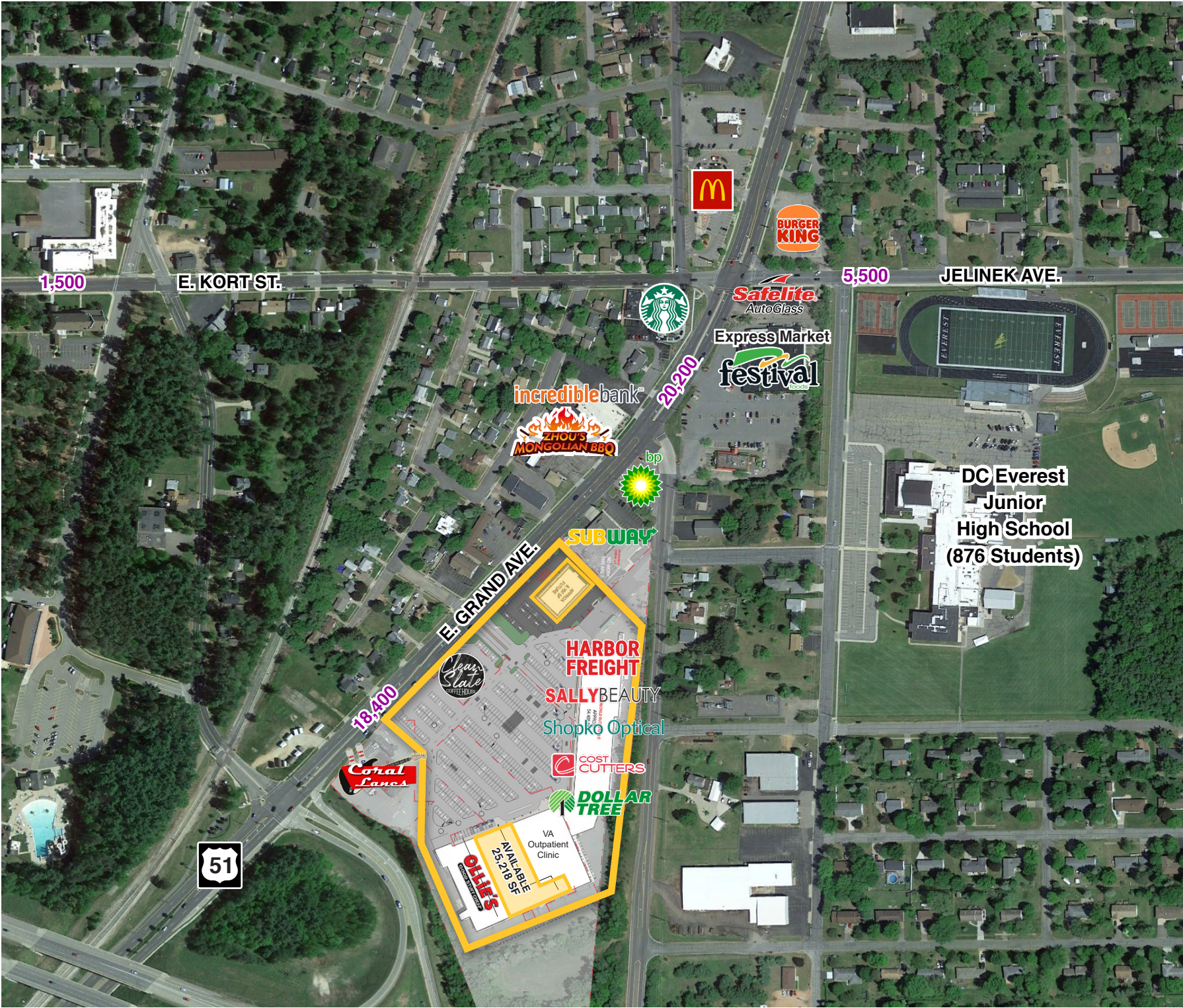
SCALE: 1/16" = 1'-0"

2025 FACADE UPDATES

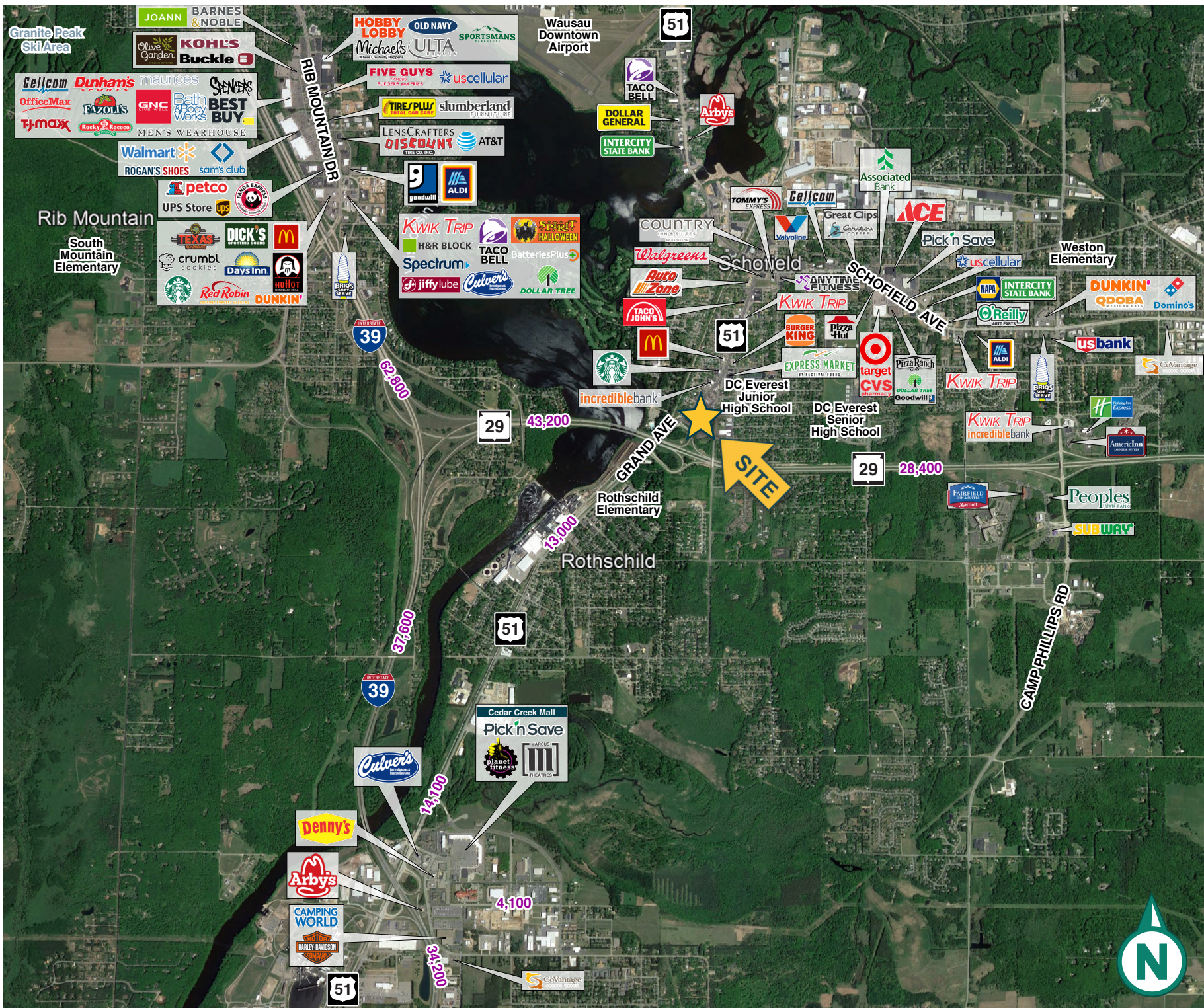




ROTHSCHILD, WI



ROTHSCHILD, WI



ONE EVEREST PLACE

E GRAND AVENUE | ROTHSCHILD, WI

ANDREW PRATER

414.390.1404

APrater@MidAmericaGrp.com

MIKE FITZGERALD

414.390.1427

Fitzgerald@MidAmericaGrp.com



MidAmericaGrp.com



600 N Plankinton Ave #301

Milwaukee, WI 53203

414.273.4600

BROKER DISCLOSURE TO NON-RESIDENTIAL CUSTOMERS

Prior to negotiating on your behalf the brokerage firm, or an agent associated with the firm, must provide you the following disclosure:

DISCLOSURE TO CUSTOMERS

You are a customer of the brokerage firm (hereinafter Firm). The Firm is either an agent of another party in the transaction or a subagent of another firm that is the agent of another party in the transaction. A broker or a salesperson acting on behalf of the Firm may provide brokerage services to you. Whenever the Firm is providing brokerage services to you, the Firm and its brokers and salespersons (hereinafter Agents) owe you, the customer, the following duties:

- The duty to provide brokerage services to you fairly and honestly.
- The duty to exercise reasonable skill and care in providing brokerage services to you.
- The duty to provide you with accurate information about market conditions within a reasonable time if you request it, unless disclosure of the information is prohibited by law.
- The duty to disclose to you in writing certain Material Adverse Facts about a property, unless disclosure of the information is prohibited by law.
- The duty to protect your confidentiality. Unless the law requires it, the Firm and its Agents will not disclose your confidential information or the confidential information of other parties.
- The duty to safeguard trust funds and other property held by the Firm or its Agents.
- The duty, when negotiating, to present contract proposals in an objective and unbiased manner and disclose the advantages and disadvantages of the proposals.

Please review this information carefully. An Agent of the Firm can answer your questions about brokerage services, but if you need legal advice, tax advice, or a professional home inspection, contact an attorney, tax advisor, or home inspector. This disclosure is required by section 452.135 of the Wisconsin statutes and is for information only. It is a plain-language summary of the duties owed to a customer under section 452.133(1) of the Wisconsin statutes.

CONFIDENTIALITY NOTICE TO CUSTOMERS

The Firm and its Agents will keep confidential any information given to the Firm or its Agents in confidence, or any information obtained by the Firm and its Agents that a reasonable person would want to be kept confidential, unless the information must be disclosed by law or you authorize the Firm to disclose particular information. The Firm and its Agents shall continue to keep the information confidential after the Firm is no longer providing brokerage services to you.

The following information is required to be disclosed by law:

1. Material Adverse Facts, as defined in Wis. Stat. § 452.01(5g) (see "Definition of Material Adverse Facts").
2. Any facts known by the Firm or its Agents that contradict any information included in a written inspection report on the property or real estate that is the subject of the transaction.

To ensure that the Firm and its Agents are aware of what specific information you consider confidential, you may list that information below. At a later time, you may also provide the Firm or its Agents with other information you consider to be confidential.

NON-CONFIDENTIAL INFORMATION (the following information may be disclosed by the Firm and its Agents): _____

(Insert information you authorize to be disclosed, such as financial qualification information.)

CONFIDENTIAL INFORMATION: _____

DEFINITION OF MATERIAL ADVERSE FACTS

A "Material Adverse Fact" is defined in Wis. Stat. § 452.01(5g) as an Adverse Fact that a party indicates is of such significance, or that is generally recognized by a competent licensee as being of such significance to a reasonable party, that it affects or would affect the party's decision to enter into a contract or agreement concerning a transaction or affects or would affect the party's decision about the terms of such a contract or agreement.

An "Adverse Fact" is defined in Wis. Stat. § 452.01(1e) as a condition or occurrence that a competent licensee generally recognizes will significantly and adversely affect the value of the property, significantly reduce the structural integrity of improvements to real estate, or present a significant health risk to occupants of the property; or information that indicates that a party to a transaction is not able to or does not intend to meet his or her obligations under a contract or agreement made concerning the transaction.

NOTICE ABOUT SEX OFFENDER REGISTRY

You may obtain information about the sex offender registry and persons registered with the registry by contacting the Wisconsin Department of Corrections on the Internet at <http://www.doc.wi.gov> or by telephone at 608-240-5830.