



CREEK|CRE

FOR LEASE

EDMOND INDUSTRIAL FLEX CONDO / STORAGE

6679 Prosper Circle, Edmond, OK 73034

JOHNNY STRADAL

405.990.0569

johnny@creekcre.com

600 NE 4TH STREET, SUITE 100 | OKLAHOMA CITY, OK 73104-6231 | 405.510.0079 | CREEKCRE.COM

NOVEMBER 13, 2024

EXECUTIVE SUMMARY



OFFERING SUMMARY

Lease Rate:	\$2,230/month (MG)
Building Size:	1,947 SF
Available SF:	1,947 SF
Submarket:	Edmond

PROPERTY OVERVIEW

This industrial condo in North Edmond offers exceptional versatility, making it ideal for a variety of uses, from personal storage solutions (cars, toys, etc.) to event space. Give us a call today to set up a tour.

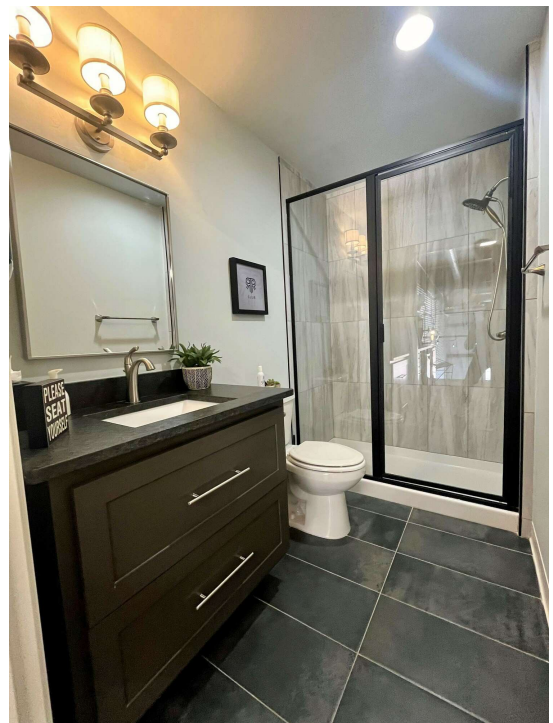
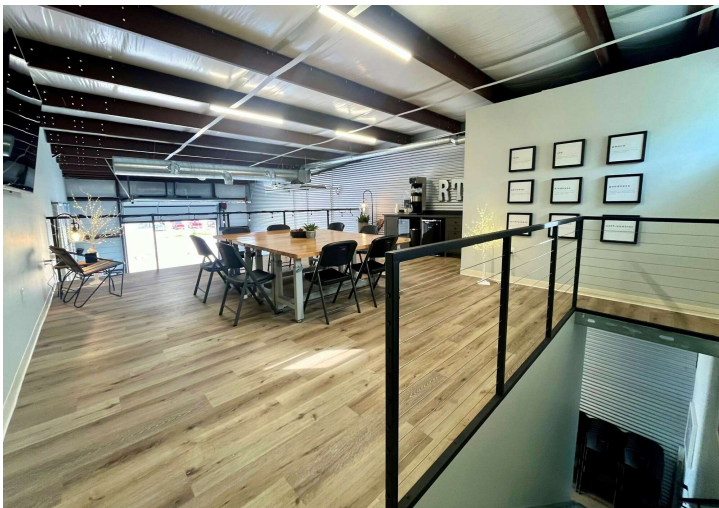
PROPERTY HIGHLIGHTS

- Warehouse, full bathroom, lounge, wet bar, etc.
- 1,320 SF of warehouse (1st floor) & 627 SF of mezzanine (2nd floor)
- Completely heated & cooled
- (1) 12' x 14' overhead door
- 20' ceiling
- AT&T fiber
- Keypad entry

JOHNNY STRADAL

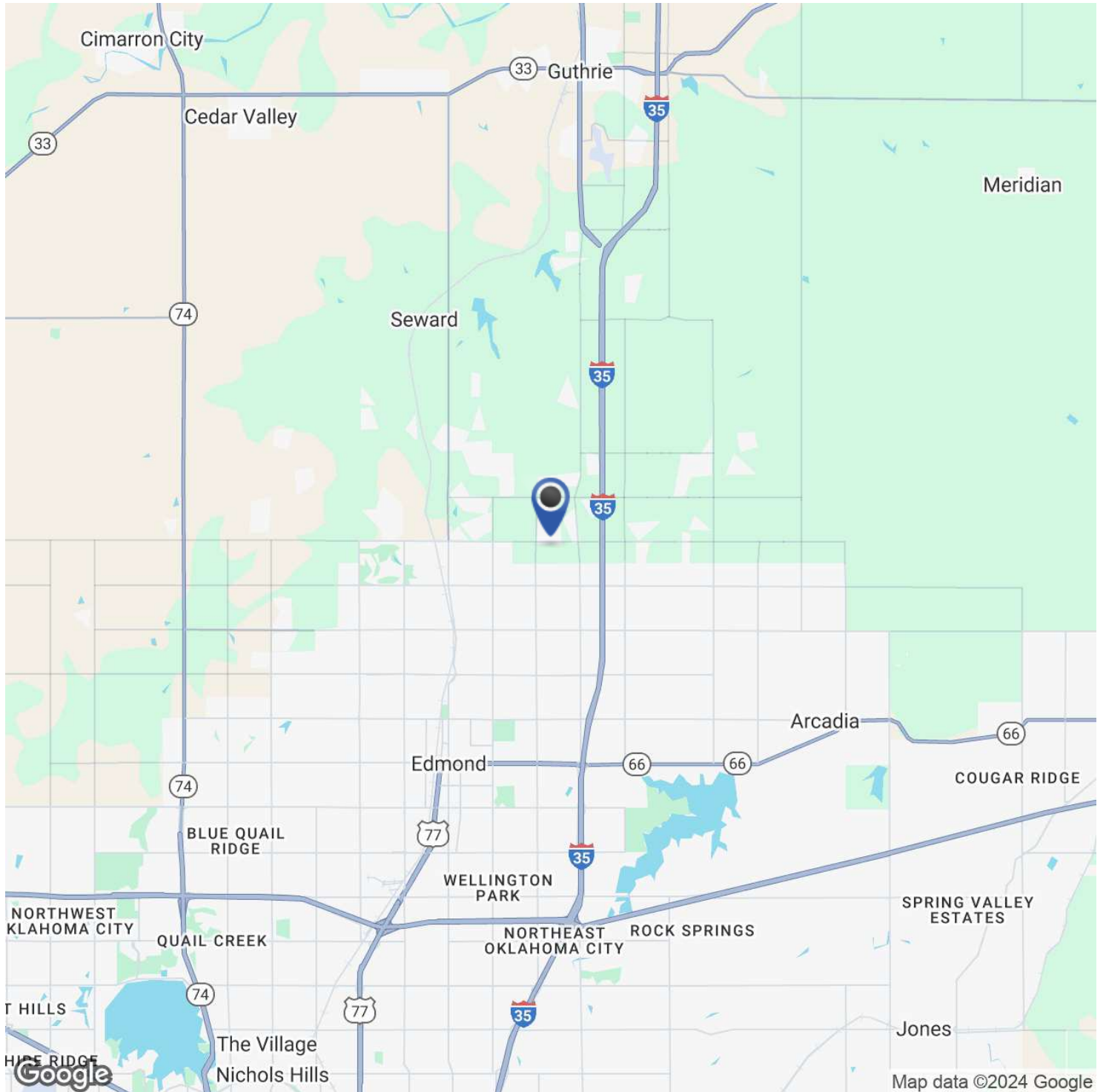
405.990.0569
johnny@creekcre.com

ADDITIONAL PHOTOS



JOHNNY STRADAL
405.990.0569
johnny@creekcre.com

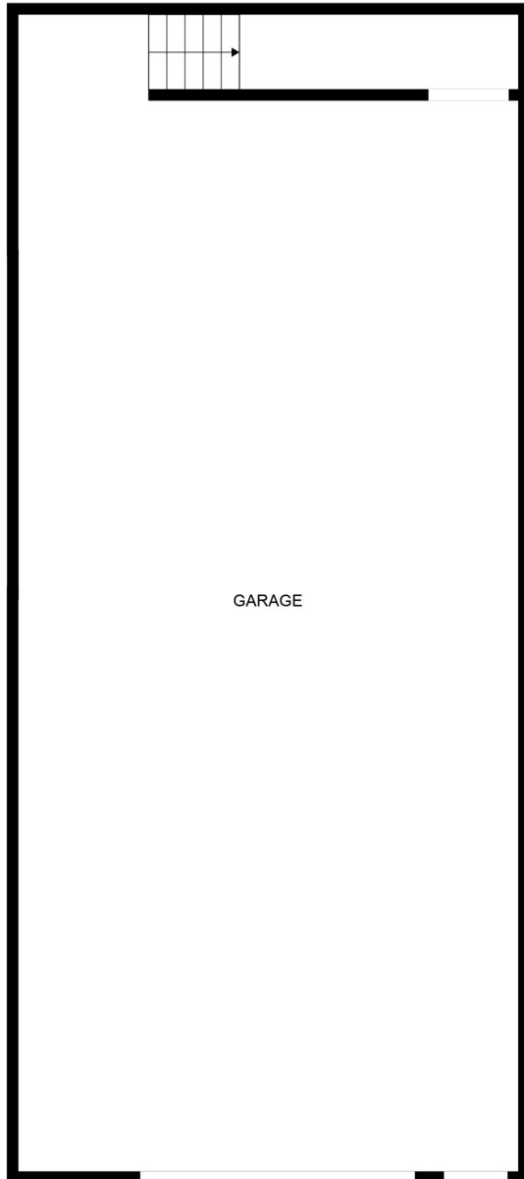
LOCATION MAP



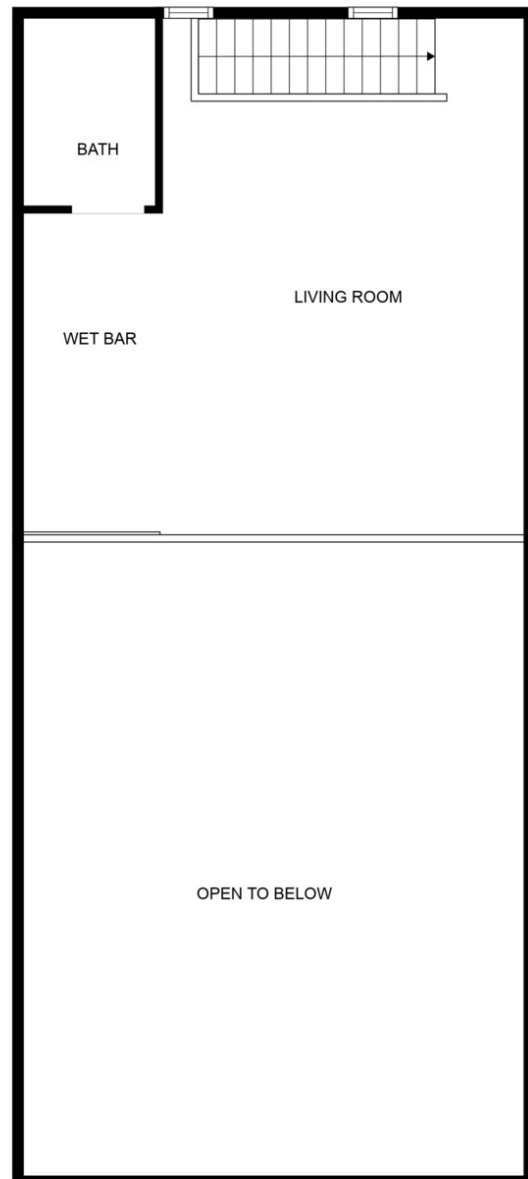
JOHNNY STRADAL

405.990.0569
johnny@creekcre.com

FLOOR PLANS



FLOOR 1



FLOOR 2

FLOOR PLAN CREATED BY CUBICASA APP. MEASUREMENTS DEEMED HIGHLY RELIABLE BUT NOT GUARANTEED.

JOHNNY STRADAL
405.990.0569
johnny@creekcre.com