

DEVELOPMENT OPPORTUNITY

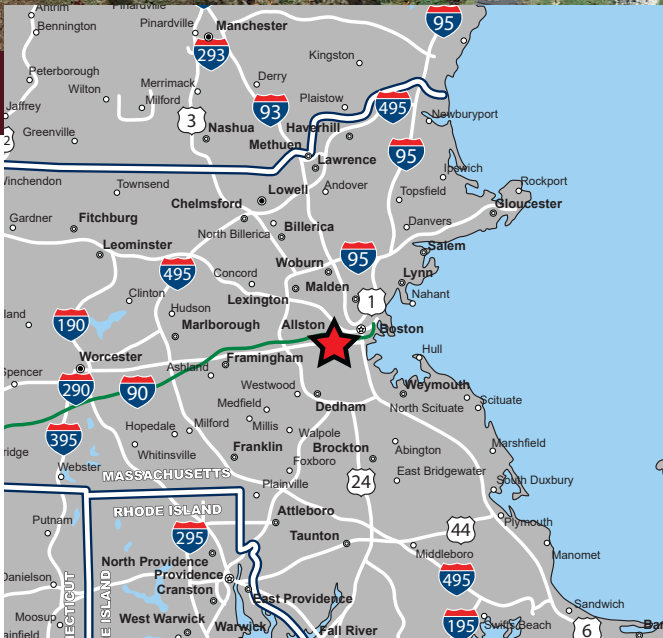
342 Bedford Street (Route 18), Whitman, Massachusetts



AVAILABLE FOR SALE OR LEASE

PROPERTY HIGHLIGHTS

- » Ground Lease or Build-To-Suit Opportunity
- » Join North Easton Savings Bank
- » Zoned Business District
- » Multiple Uses Allowed
- » Various Layouts Available
- » Excellent Visibility & Access

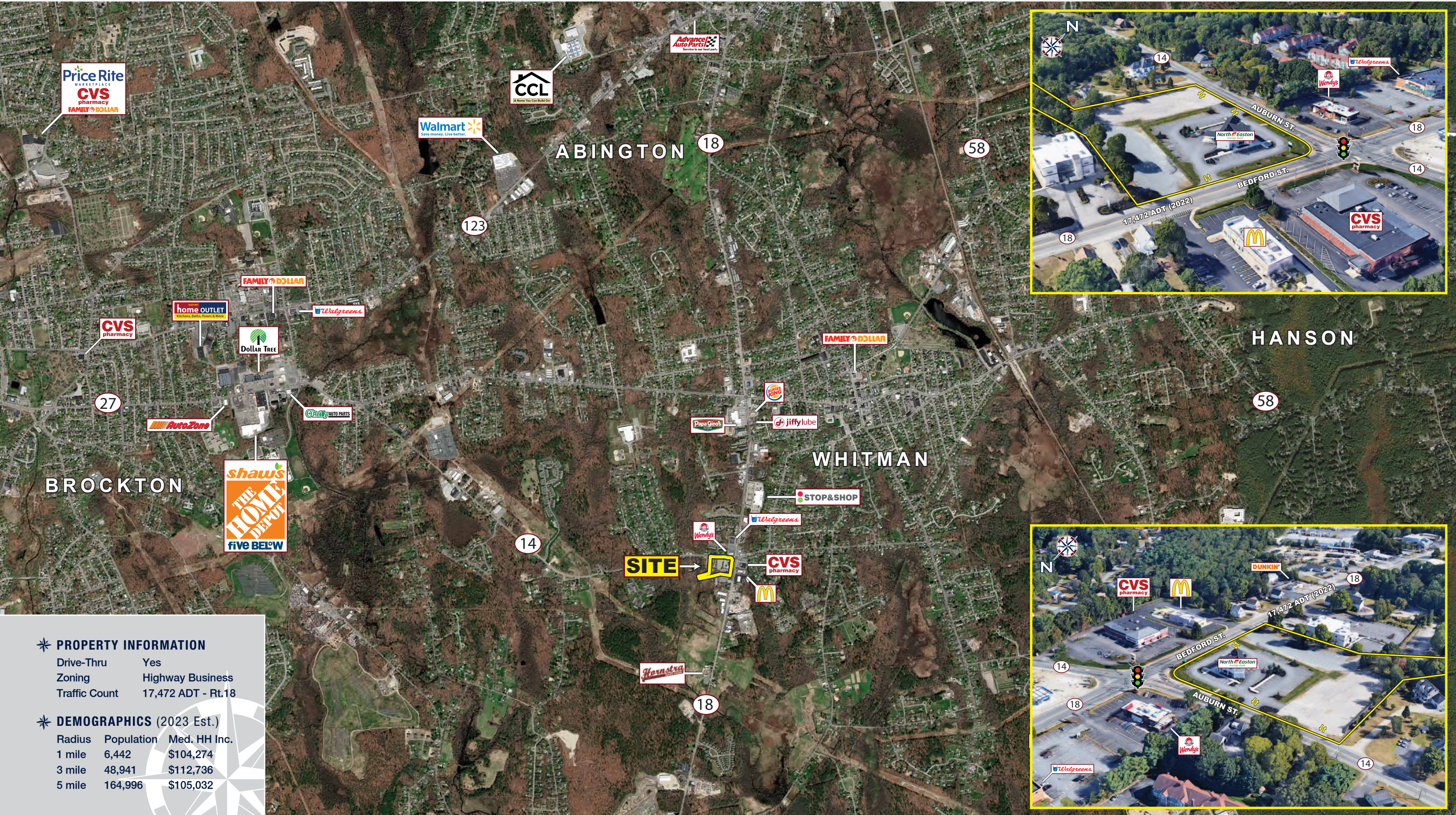


DEVELOPMENT OPPORTUNITY

342 Bedford Street (Route 18), Whitman, Massachusetts



EASTERN
RETAIL PROPERTIES

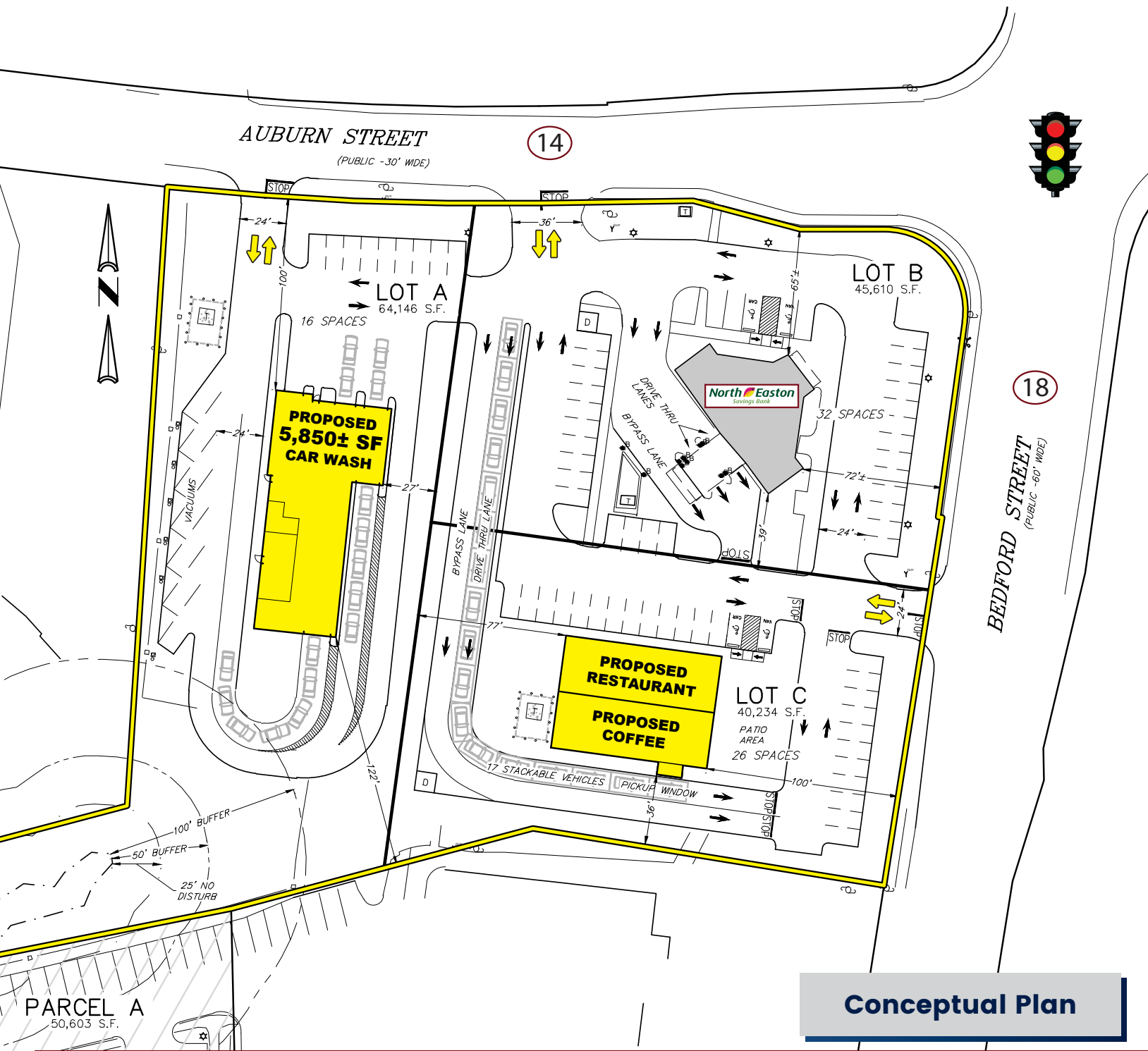


PROPERTY INFORMATION

Drive-Thru Yes
 Zoning Highway Business
 Traffic Count 17,472 ADT - Rt.18

DEMOGRAPHICS (2023 Est.)

| Radius | Population | Med. HH Inc. |
|--------|------------|--------------|
| 1 mile | 6,442 | \$104,274 |
| 3 mile | 48,941 | \$112,736 |
| 5 mile | 164,996 | \$105,032 |



Development Opportunity - 342 Bedford Street (Route 18), Whitman, MA



FOR MORE INFORMATION CONTACT:

Andrew Bonica

781.849.9011

abonica@easternretail.com

Tommy Landry

781.849-9015

tlandry@easternretail.com

P 781.849.9010 + F 781.849.9050 + www.easternretail.com + 25 Braintree Hill Office Park, Suite 305 + Braintree, MA 02184

The information above has been obtained from sources believed reliable. While we do not doubt its accuracy, we have not verified it and make no guarantee, warranty or representation about it. It is your responsibility to independently confirm its accuracy and completeness. Any projections, opinions, assumptions or estimates used are for example only and do not represent the current or future performance of the property. The value of this transaction to you depends on tax and other factors, which should be evaluated by your tax and financial advisors. You and your advisors should conduct a careful, independent investigation of the property to determine to your satisfaction, the suitability of the property for your needs.