



For sublease

3228 S Fair Lane, Tempe, AZ

±2,640 RSF

Lease Expiration: 12/31/2026

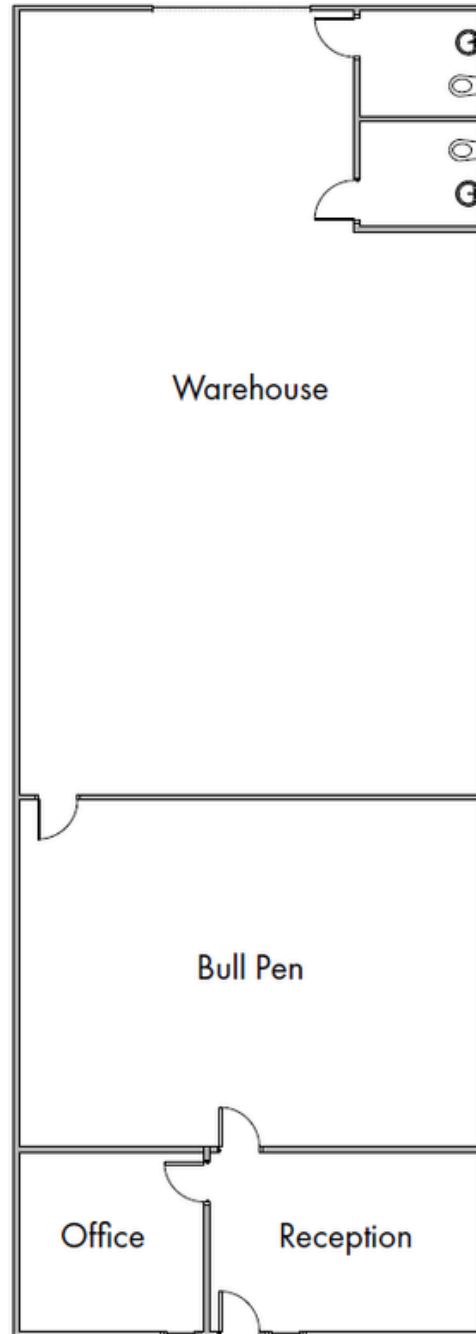
Property Highlights

- ±2,640 sf available
- Zoning: GID, City of Tempe
- 100% A/C Cooled Warehouses
- Secured Parking
- LED Lighting
- Near Sky Harbor International Airport
- New Flooring & Paint in Interior Units
- 10' x 10" Roll Up Doors



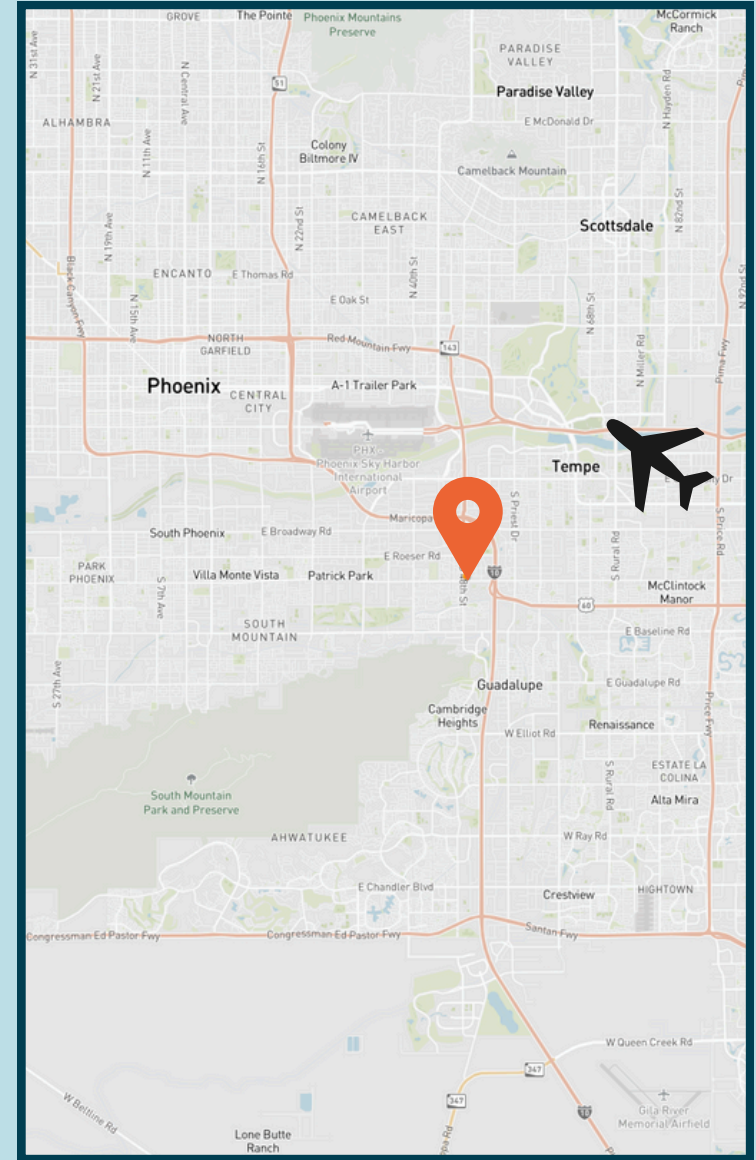
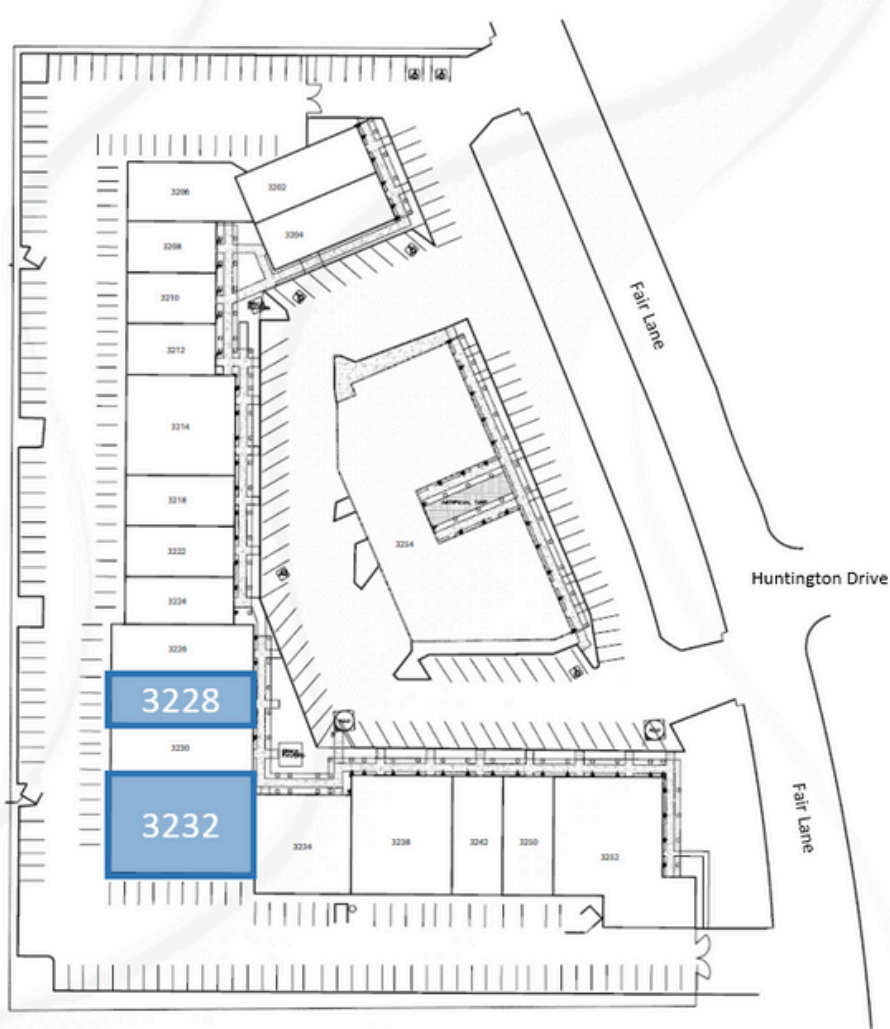
Floor Plan

±2,640 SF



3228 S Fair Lane Photos





Steve Sayre
Sr. Managing Director
602 999 7720
Steve.Sayre@jll.com