

# FOR LEASE

## Office Space

518-522 Wilshire Blvd, Santa Monica 90401

**NAI**Capital  
COMMERCIAL REAL ESTATE SERVICES, WORLDWIDE



## PROPERTY HIGHLIGHTS

- Situated in the heart of Santa Monica, just a short stroll from the vibrant Third Street Promenade
- Located a short walk from the new Expo Line
- Walker's Paradise, offering numerous dining, shopping, and entertainment options within walking distance
- Excellent visibility
- Public parking across the street

	1 mi radius	3 mi radius	5 mi radius
<b>Est. Households (2024)</b>	20,691	87,781	189,611
<b>Proj. Households (2029)</b>	20,502	86,687	185,157
<b>Est. Population (2024)</b>	38,399	180,177	420,571
<b>Proj. Population (2029)</b>	37,013	174,083	402,952
<b>Est. Average Household Income (2024)</b>	\$184,413	\$213,902	\$207,667
<b>Proj. Average Household Income (2029)</b>	\$194,528	\$224,506	\$218,740
<b>Total Businesses</b>	4,971	19,796	38,098

### Exclusively Listed By:

#### Edward Michino

Vice President  
310.878.6917  
emichino@naicapital.com  
Cal DRE Lic # 01742275

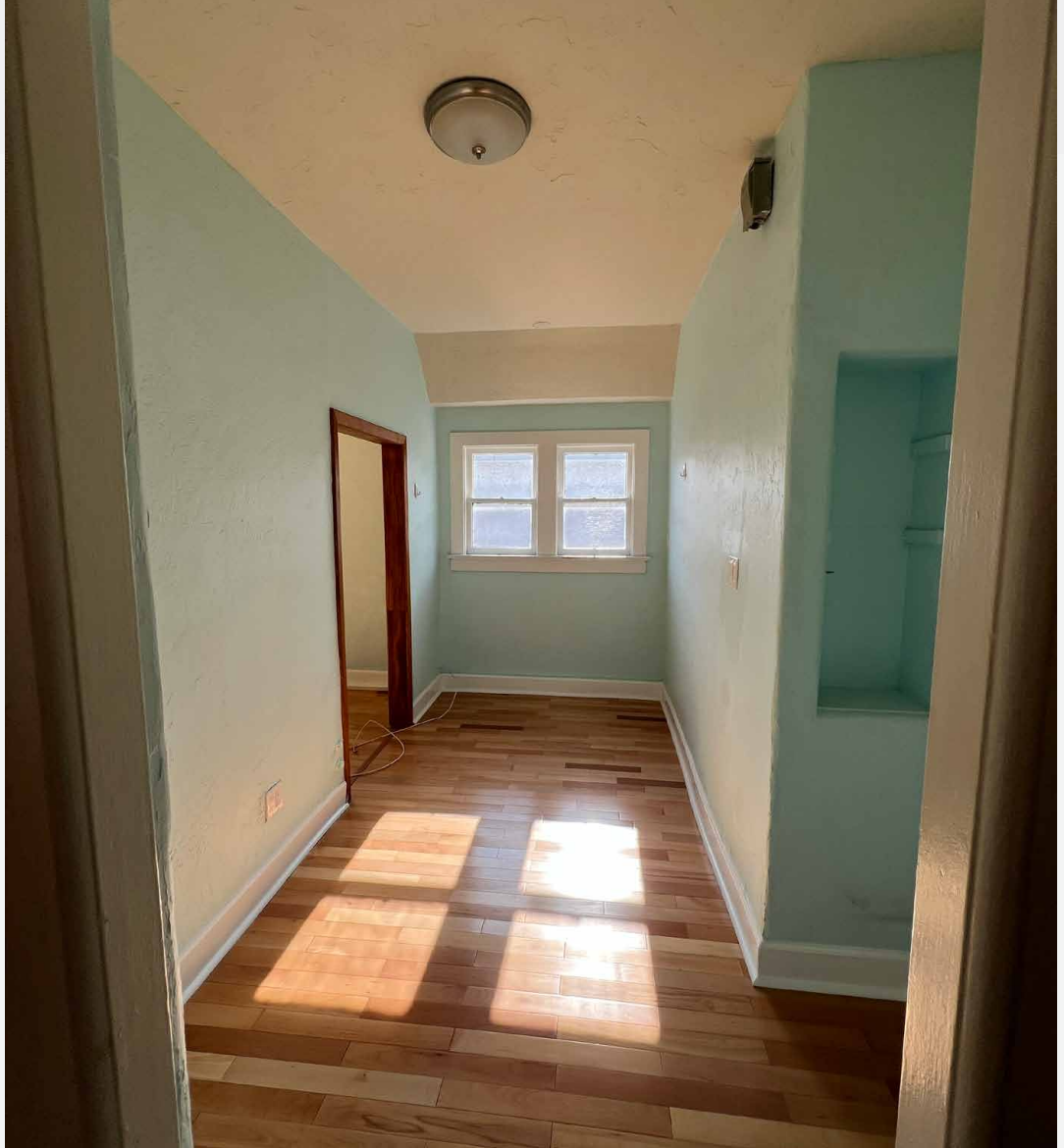
#### Jed Enomoto

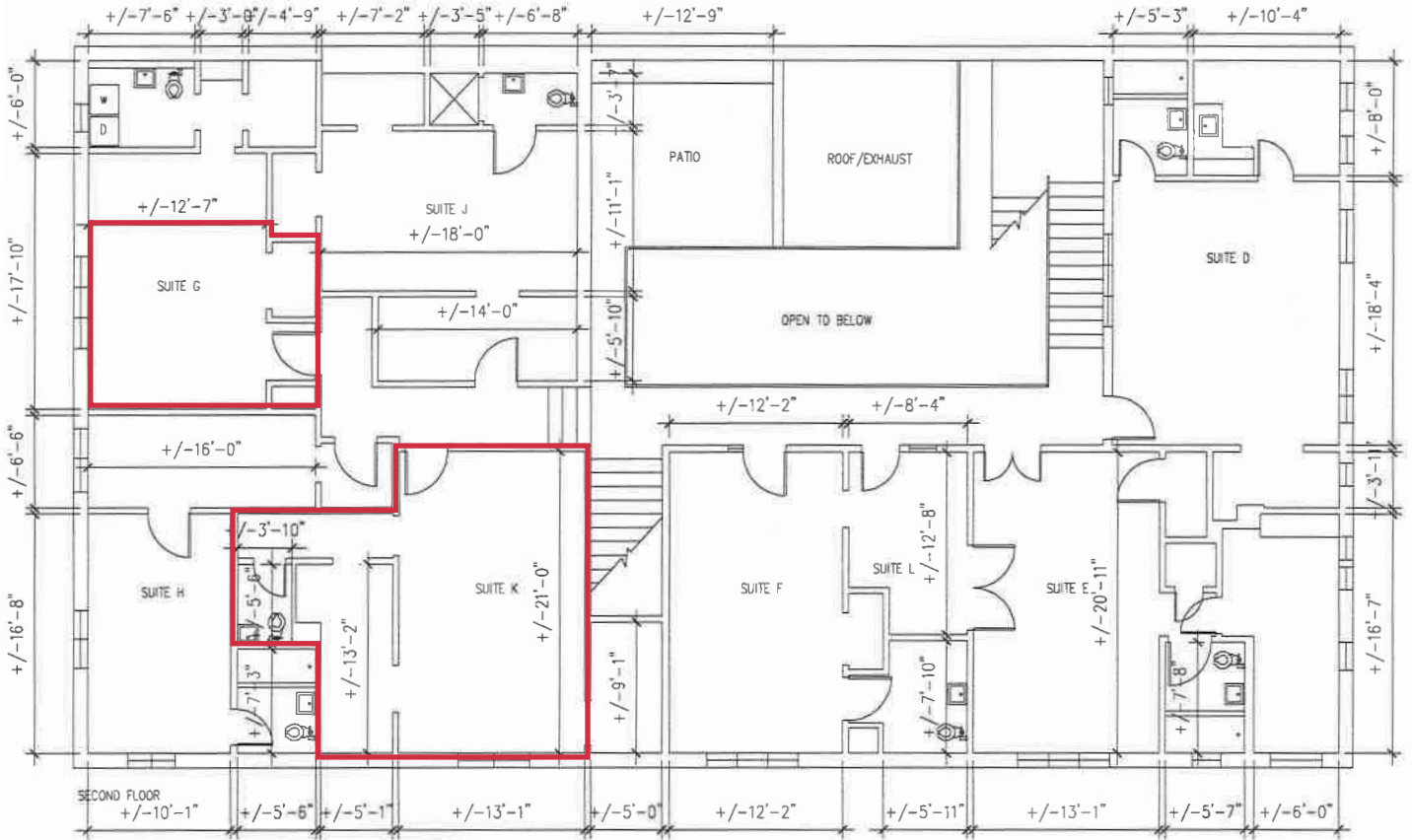
Senior Associate  
310.878.6916  
jenomoto@naicapital.com  
Cal DRE Lic #02167645

#### Katerina Kamar

Senior Associate  
310.878.6920  
kkamar@naicapital.com  
Cal DRE Lic #02111409







**Available SF:**

**Asking Rate:**

522-G	367 SF	\$3.50/SF MG
522-K	455 SF	\$3.20/SF MG



For more information:

**Edward Michino**  
 Vice President  
 310.878.6917  
 emichino@naicapital.com  
 Cal DRE Lic # 01742275

**Jed Enomoto**  
 Senior Associate  
 310.878.6916  
 jenomoto@naicapital.com  
 Cal DRE Lic #02167645

**Katerina Kamar**  
 Senior Associate  
 310.878.6920  
 kkamar@naicapital.com  
 Cal DRE Lic #02111409



# FOR LEASE

## Office Space

518-522 Wilshire Blvd, Santa Monica 90401

### Exclusively Listed By:

**Edward Michino**

Vice President  
310.878.6917  
emichino@naicapital.com  
Cal DRE Lic # 01742275

**Jed Enomoto**

Senior Associate  
310.878.6916  
jenomoto@naicapital.com  
Cal DRE Lic #02167645

**Katerina Kamar**

Senior Associate  
310.878.6920  
kkamar@naicapital.com  
Cal DRE Lic #02111409

**NAI**Capital  
COMMERCIAL REAL ESTATE SERVICES, WORLDWIDE

No warranty, express or implied, is made as to the accuracy of the information contained herein. This information is submitted subject to errors, omissions, change of price, rental or other conditions, withdrawal without notice, and is subject to any special listing conditions imposed by our principals. Cooperating brokers, buyers, tenants and other parties who receive this document should not rely on it, but should use it as a starting point of analysis, and should independently confirm the accuracy of the information contained herein through a due diligence review of the books, records, files and documents that constitute reliable sources of the information described herein. NAI Capital CA DRE #02130474