

**FOR
LEASE**



671 J CLYDE MORRIS BOULEVARD

**Lease Rate:
\$18.00 SF/yr**

PROPERTY OVERVIEW

Former Rite Aid building available for lease at the signalized intersection of J Clyde Morris Blvd and Dusk Court/Woods Road between Interstate 64 and Jefferson Avenue.

DEMOGRAPHICS

	1 MILE	3 MILES	5 MILES
Households:	6,127	35,329	75,252
Population:	13,143	81,832	170,908
Avg HH Income:	\$58,247	\$74,708	\$75,969

PROPERTY HIGHLIGHTS

- Traffic Count: 38,498 VPD
- Located at signalized intersection
- 47 parking spaces
- Double lane drive-thru with canopy
- Pylon sign
- Zoned C-1
- Enterprise Zone

AVAILABLE SPACES

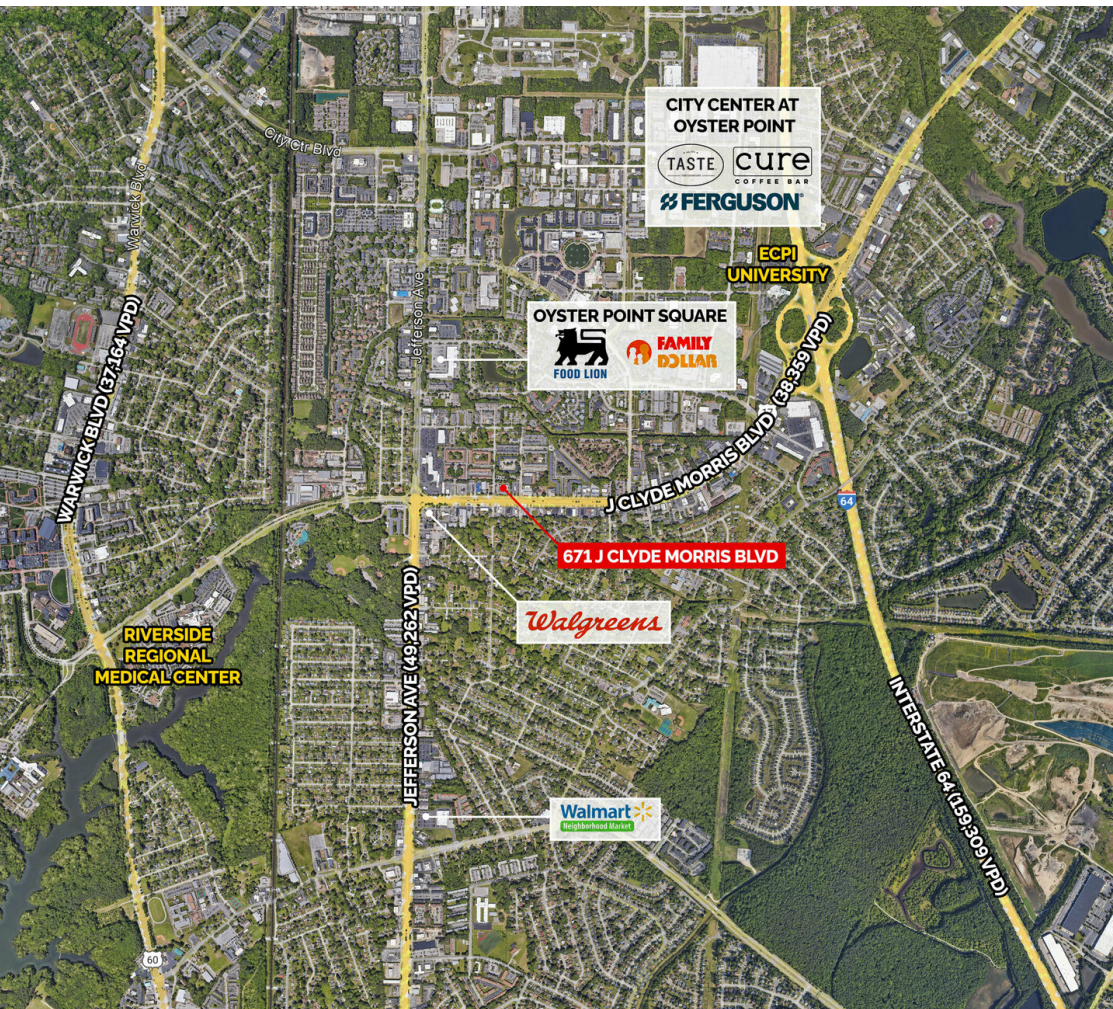
Former Rite Aid

11,309 SF

FOR FURTHER INFORMATION, PLEASE CONTACT:
LEVI THOMSON • lthomson@divaris.com • 757.333.4382



FOR LEASE



FOR FURTHER INFORMATION, PLEASE CONTACT:
LEVI THOMSON • lthomson@divaris.com • 757.333.4382

