



DEVELOPMENT LAND

# FOR SALE

80TH STREET & HIGHWAY 30 | CEDAR RAPIDS, IA



**WSG**  
CRE  
SKOGMAN  
COMMERCIAL



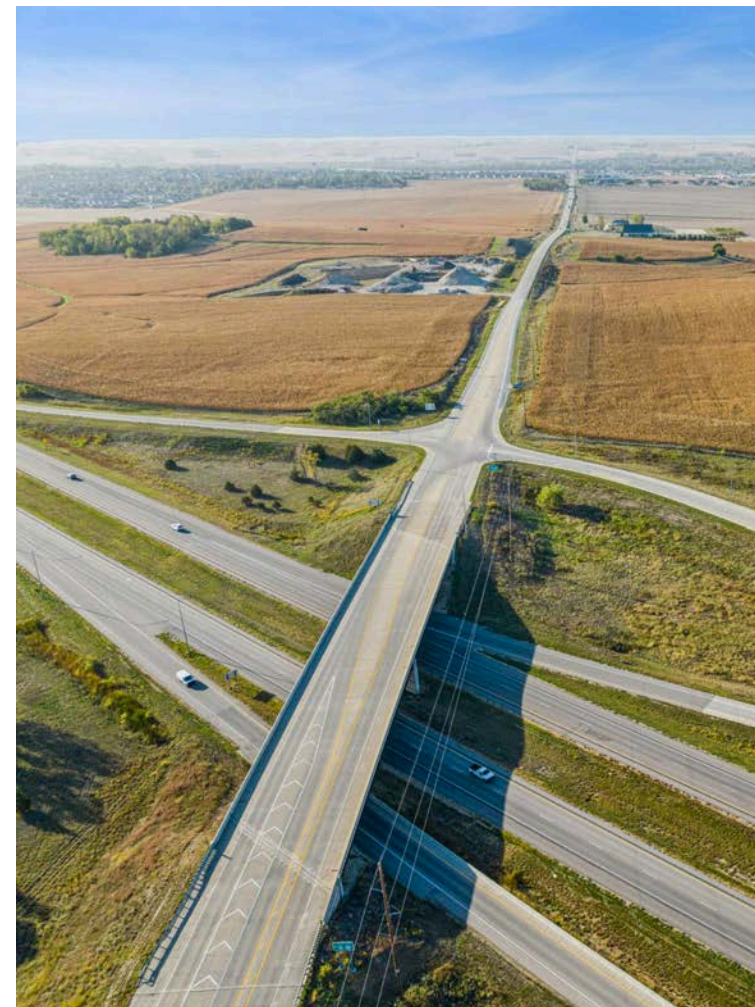


## PROPERTY OVERVIEW

Commercial development property for sale south of Highway 30, on the east side of 80th Street, north of Fairfax. Property is currently farmland and zoned agricultural. Schrader Group will provide rezoning services for the site, and bring water main and sanitary sewer main to the site. Lots will be made pad ready to meet the client's specifications. The site has not been preliminary platted and lot sizes have not been set.

### Property Details

Address	80th Street & Highway 30   Cedar Rapids, IA 52404
County	Linn
Parcel #	13343-51001-00000, 13343-76001-00000, 13344-51002-00000, 13344-76002-00000, 20032-01001-00000, 20032-26001-00000, 13343-76002-00000, 220032-01002-00000
Lot Size	166.60 Acres
Zoning	Agricultural
Property Taxes	\$8,896
Offering Price	\$15, 747, 898







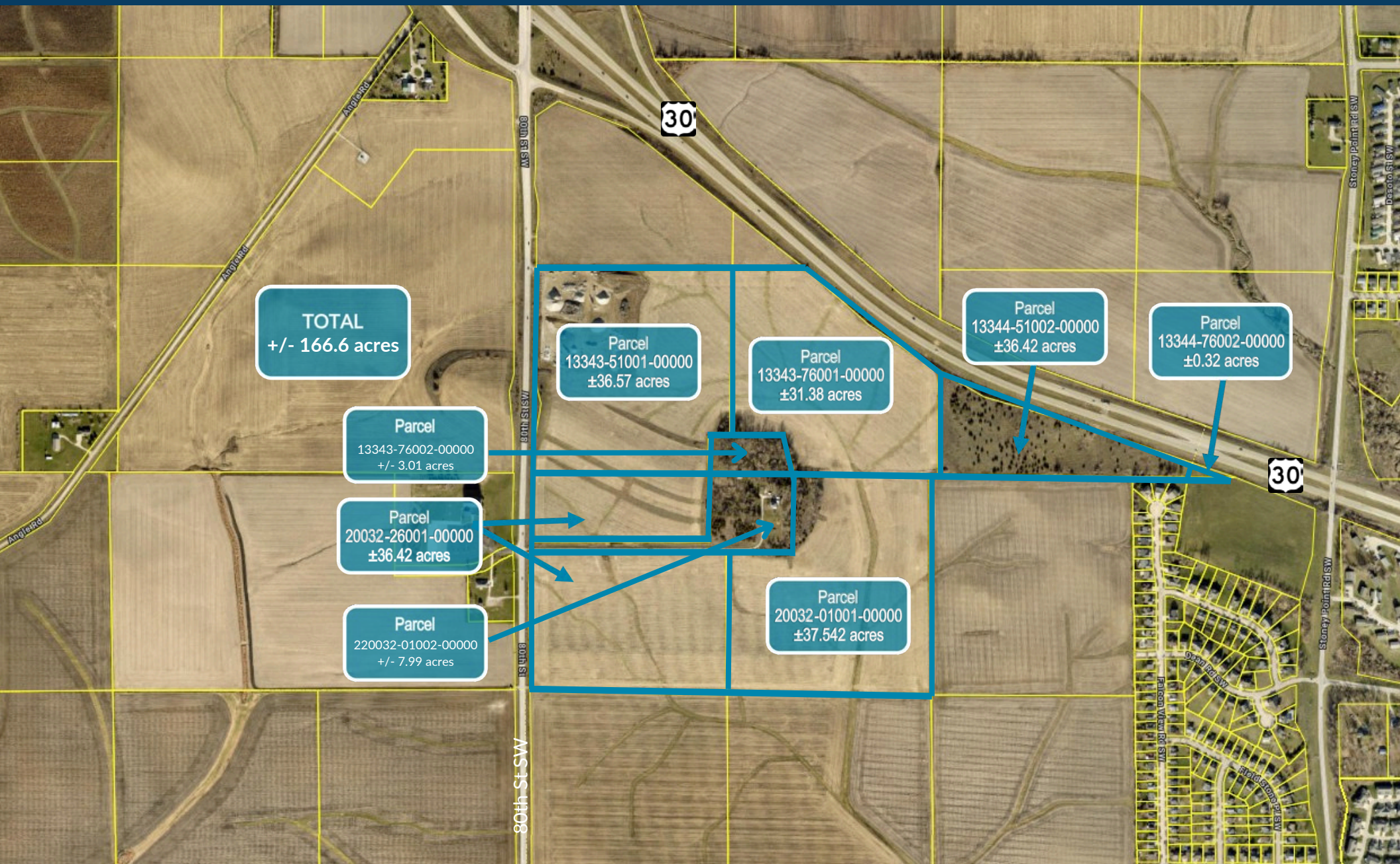
# AERIAL MAP







# PARCEL MAP







# CEDAR RAPIDS OVERVIEW

Cedar Rapids offers a prime location for industrial investment with its strategic position along major transportation corridors, including I-380, rail lines, and the Eastern Iowa Airport. The city features an extensive infrastructure supporting manufacturing and logistics, bolstered by its central Midwest location for efficient distribution. With a business-friendly environment and access to a skilled workforce, Cedar Rapids is well-suited for industrial growth and expansion.



Largest corn-processing city in the world



Second largest producer of wind energy in the U.S.



One of the leading manufacturing regions in the U.S.

## Cedar Rapids MSA

Population	276,520
Jobs	134,707
Companies	8,462
Counties	3
Cities	86
School Districts	18
Colleges & Universities	6

## Top Employers

Collins Aerospace	9,400
TransAmerica	3,800
Unity Point Health	2,979
Cedar Rapids Community	2,879
Nordstrom Direct	2,150



# TRANSPORTATION



## Driving from Cedar Rapids

	Miles	Time
Chicago, IL	247	3 hr 41 min
Detroit, MI	513	7 hr 40 min
Fargo, ND	509	7 hr 36 min
Indianapolis, IN	391	5 hr 57 min
Kansas City, MO	312	4 hr 38 min
Minneapolis, MN	275	4 hr 8 min
Omaha, NE	253	3 hr 49 min
Sioux Falls, SD	353	5 hr 17 min
St. Louis, MO	284	4 hr 28 min







# CONTACTS



**Tiffany Earl Williams**

Managing Partner/Owner Agent  
*Licensed Realtor in the State of Iowa*  
tiffanywilliams@wsgcre.com  
319-675-1694



**Josh Seamans, CCIM**

Managing Partner/Owner Broker  
*Licensed Realtor in the State of Iowa*  
joshseamans@wsgcre.com  
319-675-1694



**Gabe Golberg**

Vice President/Partner Agent  
*Licensed Realtor in the State of Iowa*  
gabegolberg@wsgcre.com  
319-675-1694



**Phil Williams**

Managing Partner/Owner Agent  
*Licensed Realtor in the State of Iowa*  
philwilliams@wsgcre.com  
319-675-1694