



PREMIER LAND SITE AVAILABLE FOR SALE



146 EAST EVESHAM ROAD | CHERRY HILL, NJ

Wolf Commercial Real Estate

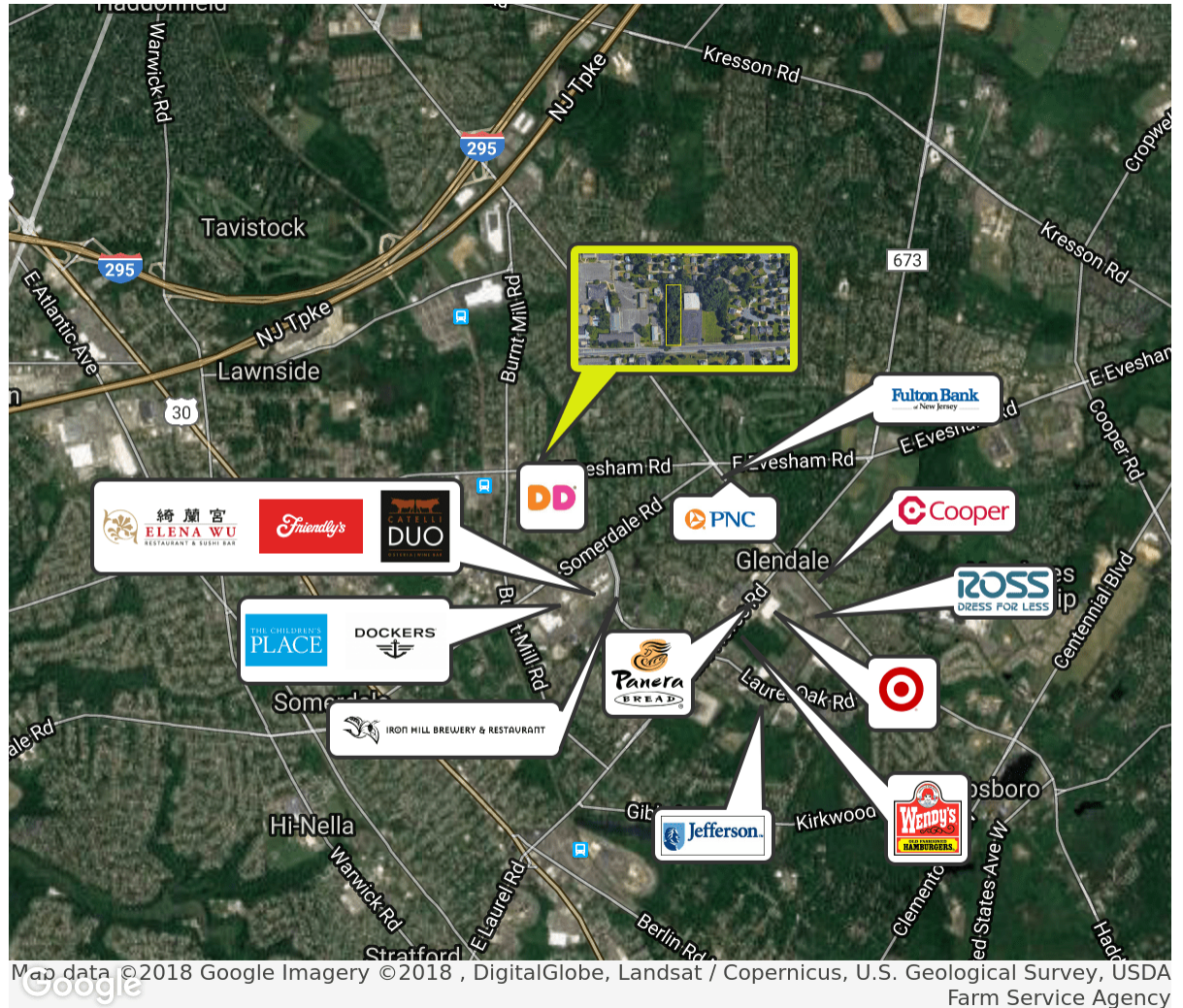
follow us:



www.WolfCRE.com

PROPERTY DESCRIPTION

- Location** 146 East Evesham Road
Cherry Hill, NJ 08003
- Acres** +/- .96 acres
- Sale Price** \$125,000
- Signage** Signage available
- Property / Area Description**
- +/- .92 acre parcel site
 - This site benefits from superior demographics, prominent visibility, and ease of access
 - Close proximity to PATCO train station & Voorhees Towne Center
 - Numerous amenities are located within the immediate area
 - Within minutes of I-295
 - Zoned Neighborhood Business (B1)-The Neighborhood Business (B1) zone is intended to provide for the mixture of shopping, individual retail uses, and office facilities that provide for personal services and needs on a neighborhood scale.



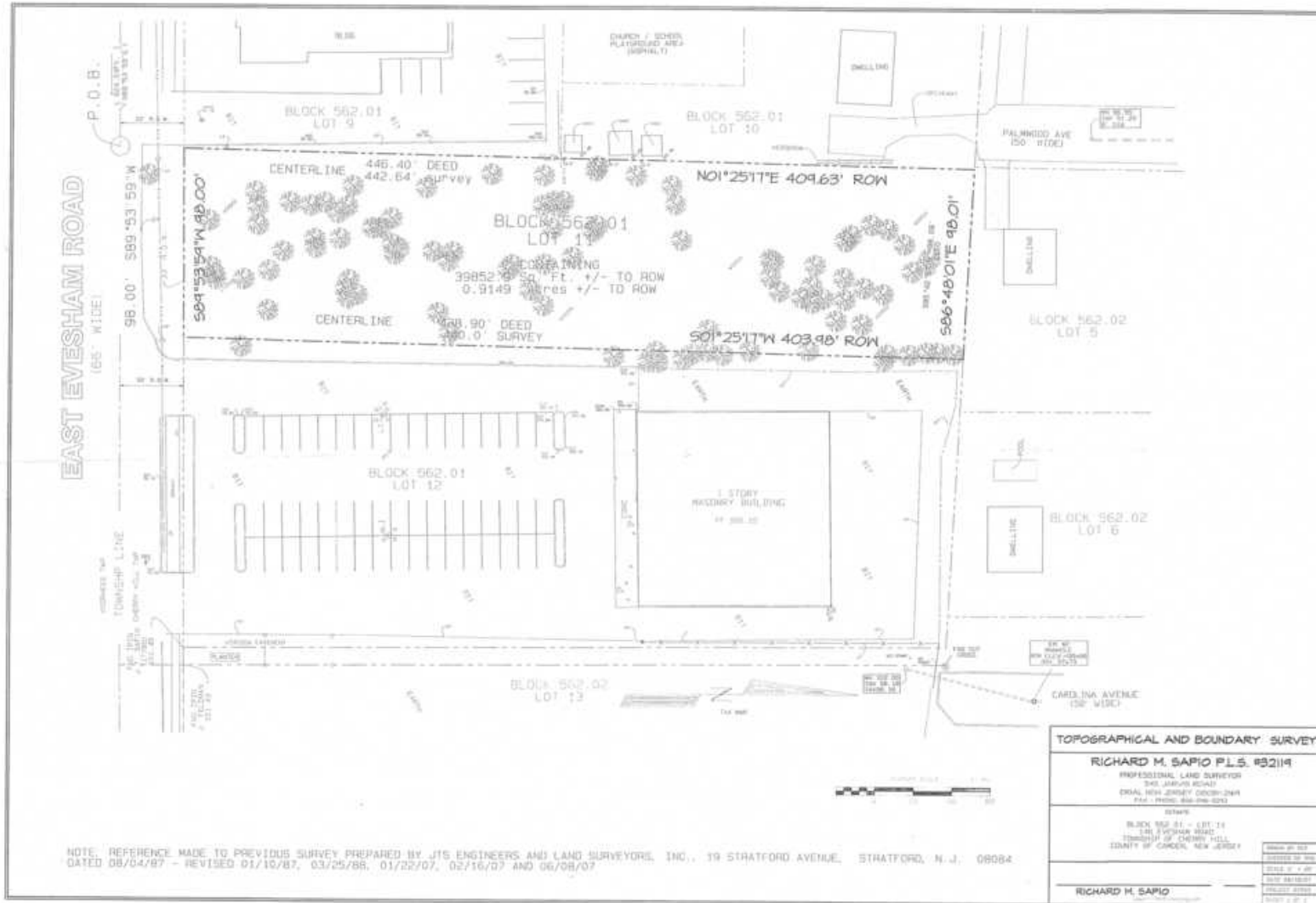
Contact Us

Christopher Henderson Principal & Vice President 856.857.6337 chris.henderson@wolfcre.com	Jason Wolf Managing Principal 856.857.6301 jason.wolf@wolfcre.com
--	--

The foregoing information was furnished to us by sources which we deem to be reliable, but no warranty or representation is made as to the accuracy thereof. Subject to correction of errors, omissions, change of price, prior sale or withdrawal from market without notice.

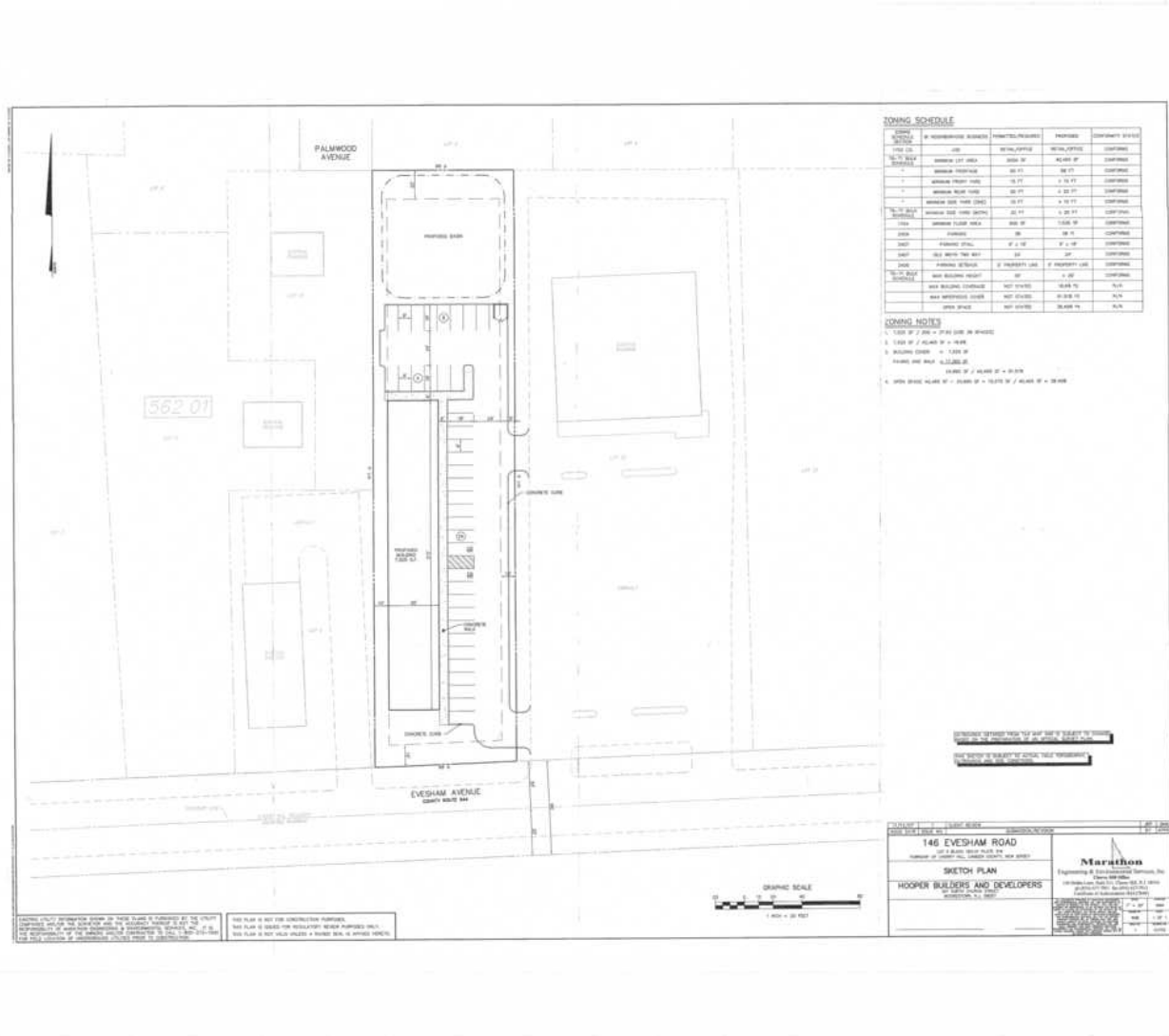
follow us:    

SITE PLAN



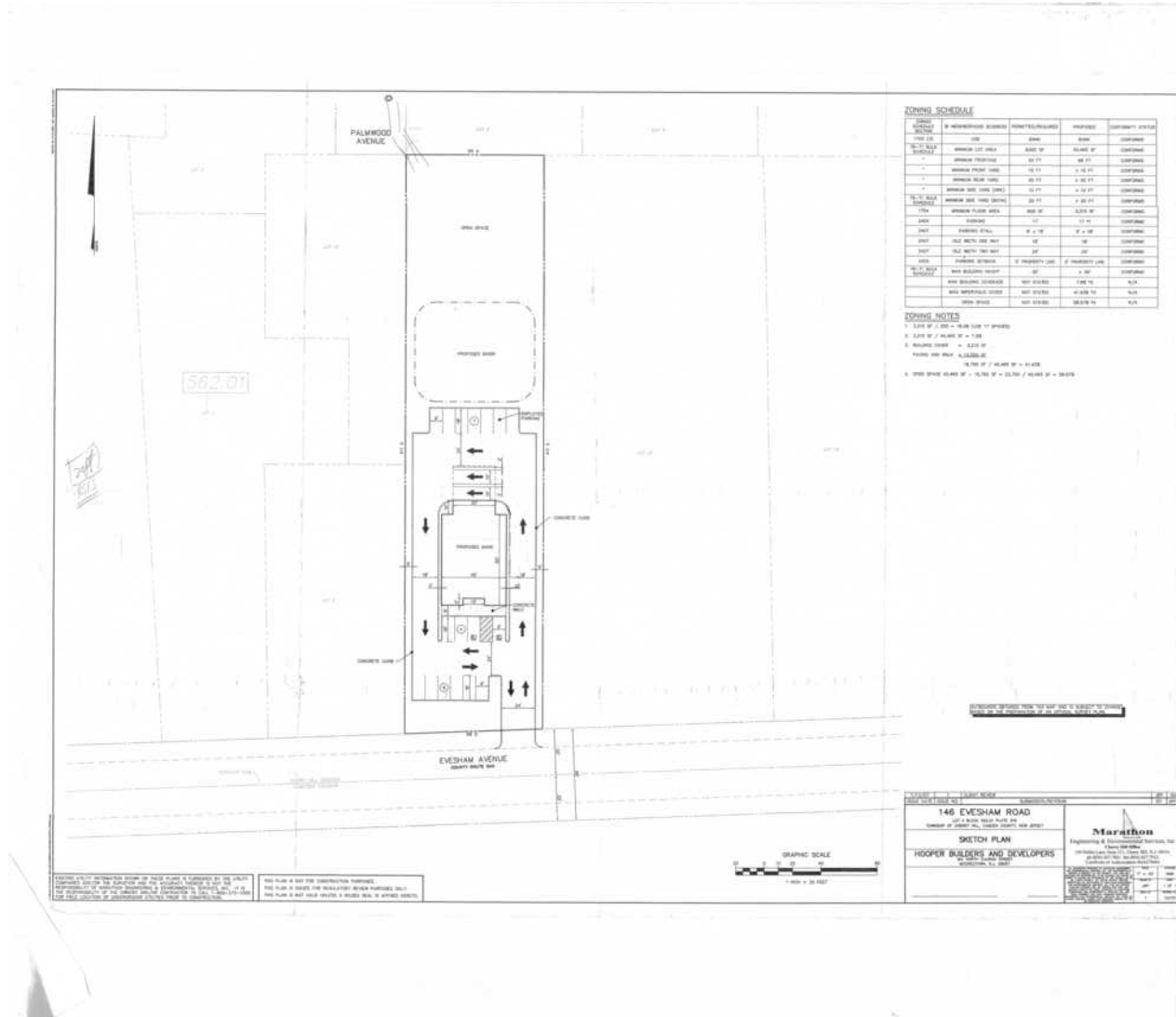
The foregoing information was furnished to us by sources which we deem to be reliable, but no warranty or representation is made as to the accuracy thereof. Subject to correction of errors, omissions, change of price, prior sale or withdrawal from market without notice.

SITE PLAN



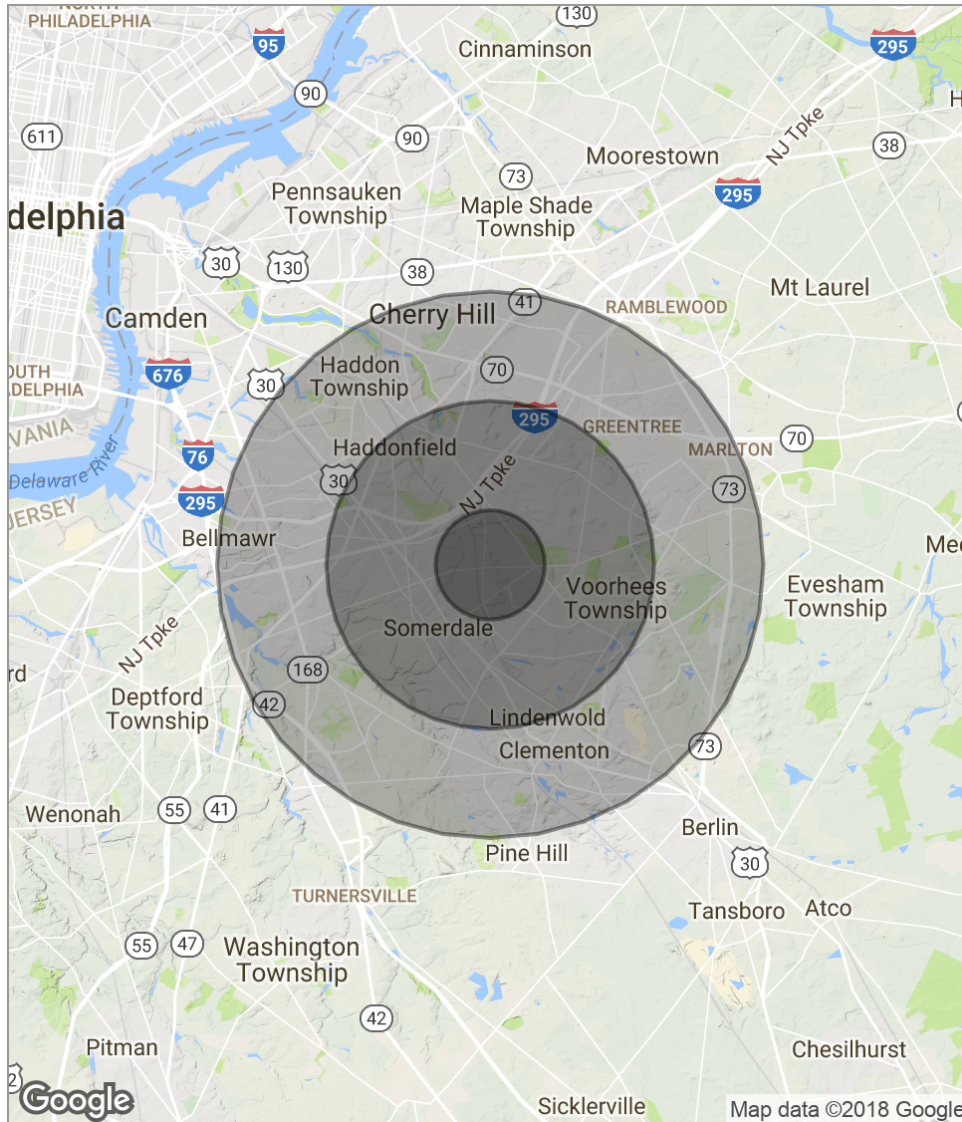
The foregoing information was furnished to us by sources which we deem to be reliable, but no warranty or representation is made as to the accuracy thereof. Subject to correction of errors, omissions, change of price, prior sale or withdrawal from market without notice.

SITE PLAN



The foregoing information was furnished to us by sources which we deem to be reliable, but no warranty or representation is made as to the accuracy thereof. Subject to correction of errors, omissions, change of price, prior sale or withdrawal from market without notice.

DEMOGRAPHICS MAP



POPULATION	1 MILE	3 MILES	5 MILES
Total population	11,550	88,524	260,377
Median age	40.0	40.9	40.4
Median age (male)	38.3	40.1	39.1
Median age (Female)	41.8	41.6	41.6
HOUSEHOLDS & INCOME	1 MILE	3 MILES	5 MILES
Total households	5,310	34,710	101,581
# of persons per HH	2.2	2.6	2.6
Average HH income	\$69,391	\$95,993	\$90,607
Average house value	\$282,386	\$290,022	\$294,178

** Demographic data derived from 2010 US Census*

The foregoing information was furnished to us by sources which we deem to be reliable, but no warranty or representation is made as to the accuracy thereof. Subject to correction of errors, omissions, change of price, prior sale or withdrawal from market without notice.