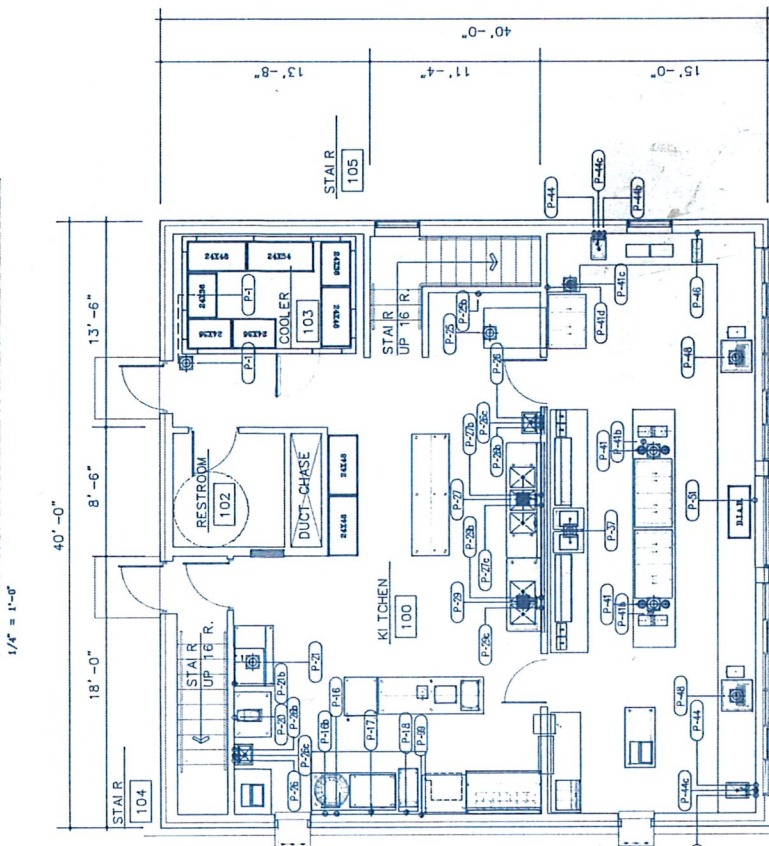


PLUMBING CONNECTION SCHEDULE

- P-1 P.C. TO EXTEND 1" DRAIN LINE FROM ITEM 1, WALK-IN COOLER TO FLOOR DRAIN
- P-16 1/2" HOT WATER, STUB OUT WALL AT 1'-0" AFF AND CONNECT AT ITEM 16, KETTLE
- P-16b 1/2" COLD WATER, STUB OUT WALL AT 1'-0" AFF AND CONNECT AT ITEM 16, KETTLE
- P-17 1/2" GAS SUPPLY INLET, 22MBTU'S, ITEM 17, GRIDDLE [SEE NOTE P99]
- P-18 3/4" GAS SUPPLY INLET, 22MBTU'S, ITEM 18, FRYER
- P-20 1/2" COLD WATER, STUB OUT WALL AT 1'-0" AFF AND CONNECT AT ITEM 20, TEA BREWER
- P-21 BREWER DRAIN, TWO (2) 3/4" INDIRECT WASTES FROM ITEM 21, ICE MAKER AND ITEM 22, ICE BIN
- P-21b 1/2" COLD WATER, STUB OUT WALL AT 1'-0" AFF AND CONNECT AT ITEM 21, ICE MAKER, CUBE-STYLE
- P-25 FLOOR DRAIN, 3/8" INDIRECT WASTE FROM ITEM 25, FROZEN CUSTARD MACHINE [BY OTHERS-VERIFY]
- P-25b 1/2" HOT WATER, STUB OUT WALL AT 1'-0" AFF AND CONNECT AT ITEM 25, FROZEN CUSTARD MACHINE [BY OTHERS-VERIFY]
- P-26 1/2" HOT WATER, STUB OUT WALL AT 1'-0" AFF AND CONNECT AT ITEM 26, HAND SINK [TWO LOCATIONS]
- P-26b 1/2" COLD WATER, STUB OUT WALL AT 1'-0" AFF AND CONNECT AT ITEM 26, HAND SINK [TWO LOCATIONS]
- P-26c 1/2" DIRECT WASTE, STUB OUT WALL AT 1'-0" AFF AND CONNECT AT ITEM 26, HAND SINK [TWO LOCATIONS]
- P-27 FLOOR SINK, THREE (3) 2" INDIRECT WASTES FROM ITEM 27, SINK, THREE COMPARTMENT [BY OTHERS-VERIFY]
- P-27b 1/2" HOT WATER, STUB OUT WALL AT 1'-0" AFF AND CONNECT AT ITEM 27, SINK, THREE COMPARTMENT
- P-27c 1/2" COLD WATER, STUB OUT WALL AT 1'-0" AFF AND CONNECT AT ITEM 27, SINK, THREE COMPARTMENT
- P-27d 1/2" DIRECT WASTE, STUB OUT WALL AT 1'-0" AFF AND CONNECT AT ITEM 27, SINK, THREE COMPARTMENT
- P-28 FLOOR SINK, THREE (3) 2" INDIRECT WASTES FROM ITEM 28, SINK, TWO COMPARTMENT
- P-28b 1/2" HOT WATER, STUB OUT WALL AT 1'-0" AFF AND CONNECT AT ITEM 28, SINK, TWO COMPARTMENT
- P-28c 1/2" COLD WATER, STUB OUT WALL AT 1'-0" AFF AND CONNECT AT ITEM 28, SINK, TWO COMPARTMENT
- P-28d 1/2" DIRECT WASTE, STUB OUT WALL AT 1'-0" AFF AND CONNECT AT ITEM 28, SINK, TWO COMPARTMENT
- P-37 FLOOR DRAIN, TWO (2) 1-1/2" WASTES FROM ITEM 37, DIPPING WELL
- P-41b 3/4" COLD WATER, STUB UP 6" AFF BRANCH OFF TO TWO CONNECTIONS AT ITEM 41, DIPPING WELL [TWO LOCATIONS]
- P-41c FLOOR DRAIN, 1-1/2" WASTE FROM ITEM 41, DIPPING WELL
- P-41d 1/2" HOT WATER, STUB OUT WALL AT 1'-0" AFF AND CONNECT AT ITEM 41, DIPPING WELL
- P-44 1/2" HOT WATER, STUB OUT WALL AT 1'-0" AFF AND CONNECT AT ITEM 44, HAND SINK, DROP-IN [TWO LOCATIONS]
- P-44b 1/2" COLD WATER, STUB OUT WALL AT 1'-0" AFF AND CONNECT AT ITEM 44, HAND SINK, DROP-IN [TWO LOCATIONS]
- P-44c 1-1/2" DIRECT WASTE HUB, STUB OUT WALL AT 1'-0" AFF AND CONNECT AT ITEM 44, HAND SINK, DROP-IN [TWO LOCATIONS]
- P-46 3/8" COLD WATER, STUB OUT WALL AT 4'-0" AFF AND CONNECT AT ITEM 46, COFFEE BREWER
- P-48 FLOOR DRAIN, 1" INDIRECT WASTE FROM ITEM 48, FRYER [BY OTHERS-VERIFY W/SUPPLIER]
- P-51 1-1/2" COLD WATER, STUB OUT WALL AT 1'-0" AFF AND CONNECT AT ITEM 51, SUPPRESSION VALVE [BY OTHERS-VERIFY W/SUPPLIER]
- P-51b 1-1/2" COLD WATER, STUB OUT WALL AT 1'-0" AFF AND CONNECT AT ITEM 51, SUPPRESSION VALVE [BY OTHERS-VERIFY W/SUPPLIER]
- P-51c 1-1/2" COLD WATER, STUB OUT WALL AT 1'-0" AFF AND CONNECT AT ITEM 51, SUPPRESSION VALVE [BY OTHERS-VERIFY W/SUPPLIER]
- P-51d 1-1/2" COLD WATER, STUB OUT WALL AT 1'-0" AFF AND CONNECT AT ITEM 51, SUPPRESSION VALVE [BY OTHERS-VERIFY W/SUPPLIER]
- P-51e 1-1/2" COLD WATER, STUB OUT WALL AT 1'-0" AFF AND CONNECT AT ITEM 51, SUPPRESSION VALVE [BY OTHERS-VERIFY W/SUPPLIER]
- P-51f 1-1/2" COLD WATER, STUB OUT WALL AT 1'-0" AFF AND CONNECT AT ITEM 51, SUPPRESSION VALVE [BY OTHERS-VERIFY W/SUPPLIER]
- P-51g 1-1/2" COLD WATER, STUB OUT WALL AT 1'-0" AFF AND CONNECT AT ITEM 51, SUPPRESSION VALVE [BY OTHERS-VERIFY W/SUPPLIER]
- P-51h 1-1/2" COLD WATER, STUB OUT WALL AT 1'-0" AFF AND CONNECT AT ITEM 51, SUPPRESSION VALVE [BY OTHERS-VERIFY W/SUPPLIER]
- P-51i 1-1/2" COLD WATER, STUB OUT WALL AT 1'-0" AFF AND CONNECT AT ITEM 51, SUPPRESSION VALVE [BY OTHERS-VERIFY W/SUPPLIER]
- P-51j 1-1/2" COLD WATER, STUB OUT WALL AT 1'-0" AFF AND CONNECT AT ITEM 51, SUPPRESSION VALVE [BY OTHERS-VERIFY W/SUPPLIER]
- P-51k 1-1/2" COLD WATER, STUB OUT WALL AT 1'-0" AFF AND CONNECT AT ITEM 51, SUPPRESSION VALVE [BY OTHERS-VERIFY W/SUPPLIER]
- P-51l 1-1/2" COLD WATER, STUB OUT WALL AT 1'-0" AFF AND CONNECT AT ITEM 51, SUPPRESSION VALVE [BY OTHERS-VERIFY W/SUPPLIER]
- P-51m 1-1/2" COLD WATER, STUB OUT WALL AT 1'-0" AFF AND CONNECT AT ITEM 51, SUPPRESSION VALVE [BY OTHERS-VERIFY W/SUPPLIER]
- P-51n 1-1/2" COLD WATER, STUB OUT WALL AT 1'-0" AFF AND CONNECT AT ITEM 51, SUPPRESSION VALVE [BY OTHERS-VERIFY W/SUPPLIER]
- P-51o 1-1/2" COLD WATER, STUB OUT WALL AT 1'-0" AFF AND CONNECT AT ITEM 51, SUPPRESSION VALVE [BY OTHERS-VERIFY W/SUPPLIER]
- P-51p 1-1/2" COLD WATER, STUB OUT WALL AT 1'-0" AFF AND CONNECT AT ITEM 51, SUPPRESSION VALVE [BY OTHERS-VERIFY W/SUPPLIER]
- P-51q 1-1/2" COLD WATER, STUB OUT WALL AT 1'-0" AFF AND CONNECT AT ITEM 51, SUPPRESSION VALVE [BY OTHERS-VERIFY W/SUPPLIER]
- P-51r 1-1/2" COLD WATER, STUB OUT WALL AT 1'-0" AFF AND CONNECT AT ITEM 51, SUPPRESSION VALVE [BY OTHERS-VERIFY W/SUPPLIER]
- P-51s 1-1/2" COLD WATER, STUB OUT WALL AT 1'-0" AFF AND CONNECT AT ITEM 51, SUPPRESSION VALVE [BY OTHERS-VERIFY W/SUPPLIER]
- P-51t 1-1/2" COLD WATER, STUB OUT WALL AT 1'-0" AFF AND CONNECT AT ITEM 51, SUPPRESSION VALVE [BY OTHERS-VERIFY W/SUPPLIER]
- P-51u 1-1/2" COLD WATER, STUB OUT WALL AT 1'-0" AFF AND CONNECT AT ITEM 51, SUPPRESSION VALVE [BY OTHERS-VERIFY W/SUPPLIER]
- P-51v 1-1/2" COLD WATER, STUB OUT WALL AT 1'-0" AFF AND CONNECT AT ITEM 51, SUPPRESSION VALVE [BY OTHERS-VERIFY W/SUPPLIER]
- P-51w 1-1/2" COLD WATER, STUB OUT WALL AT 1'-0" AFF AND CONNECT AT ITEM 51, SUPPRESSION VALVE [BY OTHERS-VERIFY W/SUPPLIER]
- P-51x 1-1/2" COLD WATER, STUB OUT WALL AT 1'-0" AFF AND CONNECT AT ITEM 51, SUPPRESSION VALVE [BY OTHERS-VERIFY W/SUPPLIER]
- P-51y 1-1/2" COLD WATER, STUB OUT WALL AT 1'-0" AFF AND CONNECT AT ITEM 51, SUPPRESSION VALVE [BY OTHERS-VERIFY W/SUPPLIER]
- P-51z 1-1/2" COLD WATER, STUB OUT WALL AT 1'-0" AFF AND CONNECT AT ITEM 51, SUPPRESSION VALVE [BY OTHERS-VERIFY W/SUPPLIER]

FLOOR PLAN
1/4" = 1'-0"



P.C. TO PROVIDE ALL LABOR AND MATERIALS TO REFINISH ARE SHOWN FROM FINISHED SURFACE TO CENTER LINE UNLESS OTHERWISE NOTED. ALL COMPONENTS PROVIDED BY K.L.C. AND PLUMB AS DIRECTED BY K.L.C.

G.C. TO PROVIDE 64" WIDE X 3/4" PLYWOOD WOOD BLOCKING LOCATED BETWEEN 64"-AFF & 78"-AFF

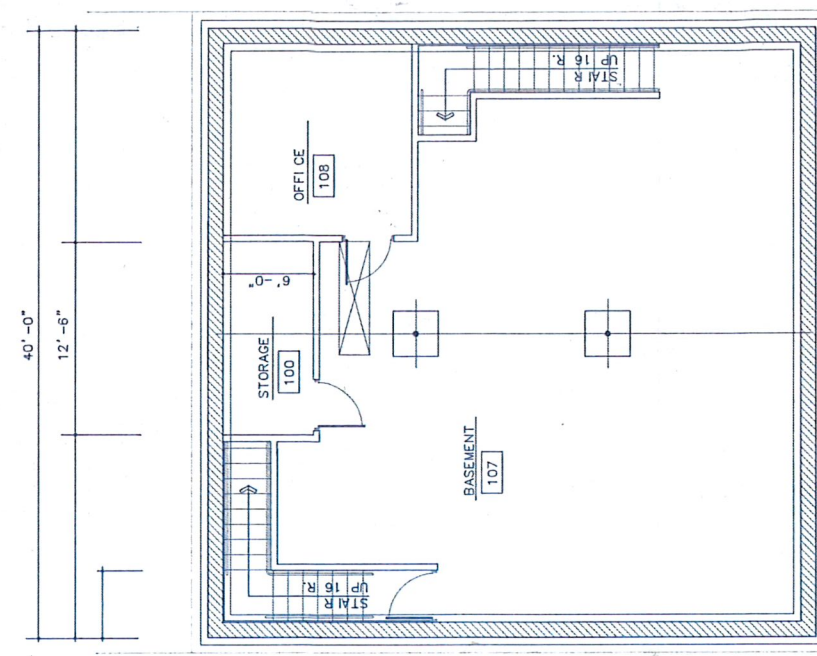
LEGEND:
WOOD BLOCKING

G.C. TO PROVIDE 24" WIDE X 3/4" PLYWOOD WOOD BLOCKING LOCATED BETWEEN 34"-AFF & 42"-AFF

LEGEND:
WOOD BLOCKING

G.C. TO PROVIDE 300 MBTU'S, NATURAL GAS, STUB OUT WALL AT 1'-0" AFF, EXTEND AND CONNECT AT ITEM 17, GRIDDLE AND ITEM 18, FRYER

P.C. TO PROVIDE AND INSTALL MECHANICAL GAS VALVE FOR FIRE SUPPRESSION SYSTEM.



BASEMENT PLAN
1/4" = 1'-0"

THIS DRAWING TO BE USED FOR ESTIMATING PURPOSES ONLY.

SPOT LOCATIONS SHOWN IN THIS DRAWING ARE FOR INFORMATION ONLY. A GUIDE ONLY AND NOT A FINISHED OR FINAL DRAWING. ALL DIMENSIONS SHOWN ARE TO FACE UNLESS OTHERWISE NOTED. THE FIELD DRAWING NOT FOR FINAL CONNECTIONS.

WOOD BLOCKING NOTE
WOOD BLOCKING IS REQUIRED FOR ALL WALLS, CEILING, AND FLOOR JOINTS. PRE-FINISH WOOD BLOCKING IS REQUIRED TO PROVIDE WOOD BLOCKING AS REQUIRED. AND INSTALL AS DIRECTED BY K.L.C.

PLUMBING SPOT LOCATIONS
OLD CUSTARD STAND
NOBLESTVILLE, IN

DATE: 4/10/98
SCALE: 1/4" = 1'-0"