



1211R1 Chesapeake Ave

1195-1215 Chesapeake Ave, Columbus, Ohio 43212

Property Features

- ±2,100 SF Office/Warehouse Suite
- Two Private Offices
- Third Area Suitable for Additional Office or Storage
- Open Warehouse Space
- One Glass Drive-in Door (10' x 8')
- Restroom with Walk-in Shower
- Convenient Location Between Grandview and OSU with Nearby Access to SR 315
- Available February 1, 2026

Lease Rate: \$10.00 SF/Yr (Gross)



For more information:

Kaydee Hurst

614 629 5226 • khurst@ohioequities.com

Matthew Osowski, SIOR

614 629 5229 • mosowski@ohioequities.com

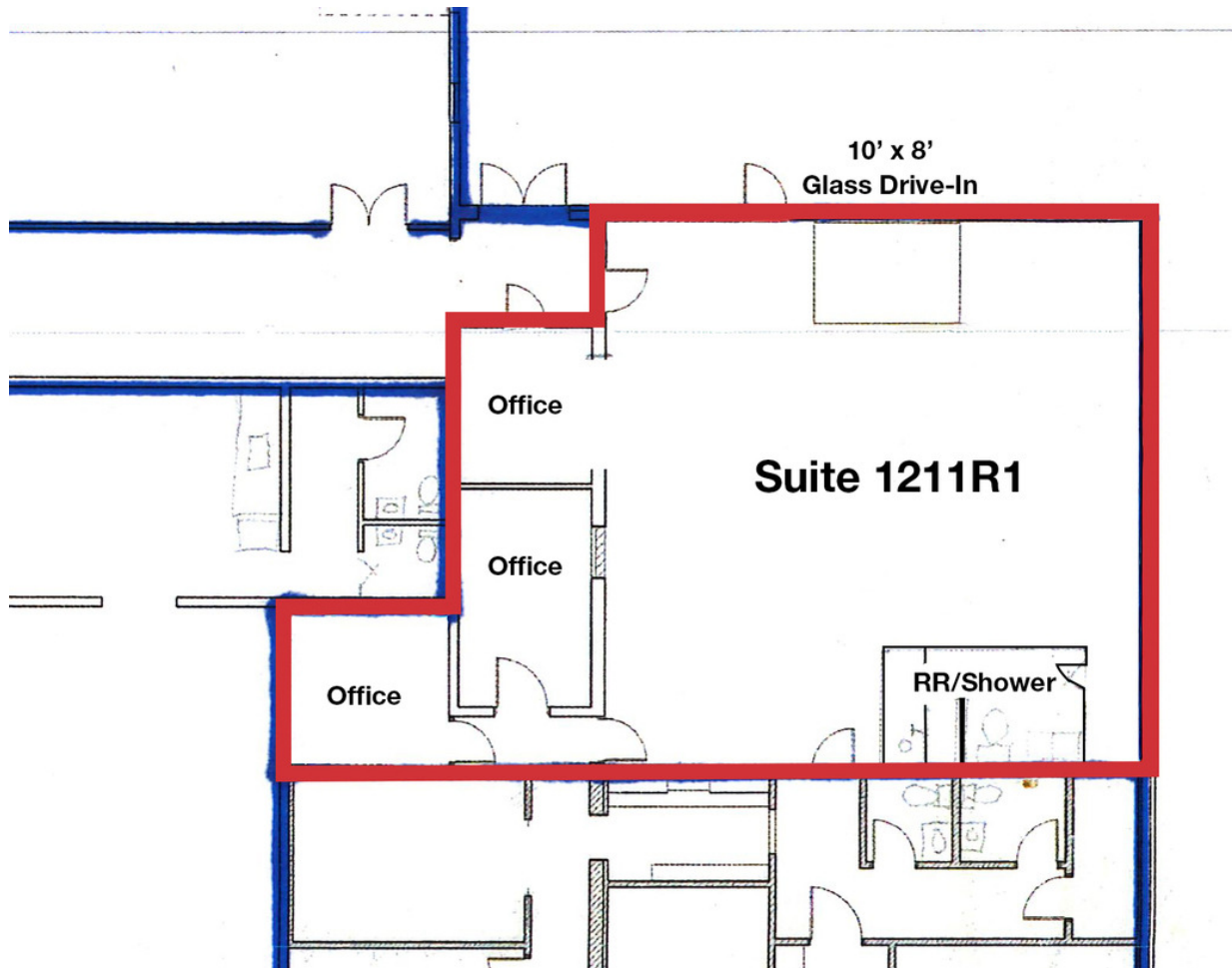
Blake DeCrane, SIOR

614 629 5269 • bdecrane@ohioequities.com

Curt Berlin, SIOR

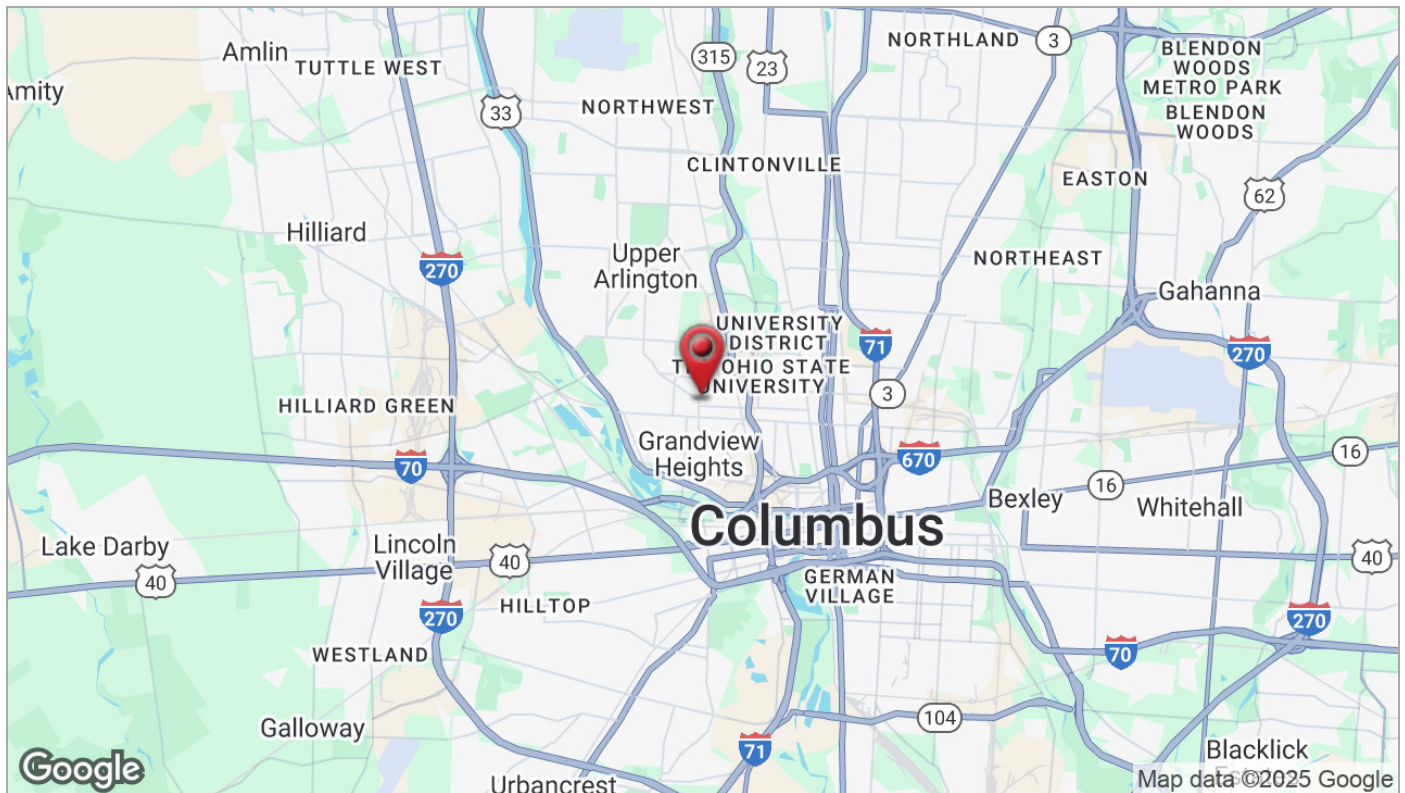
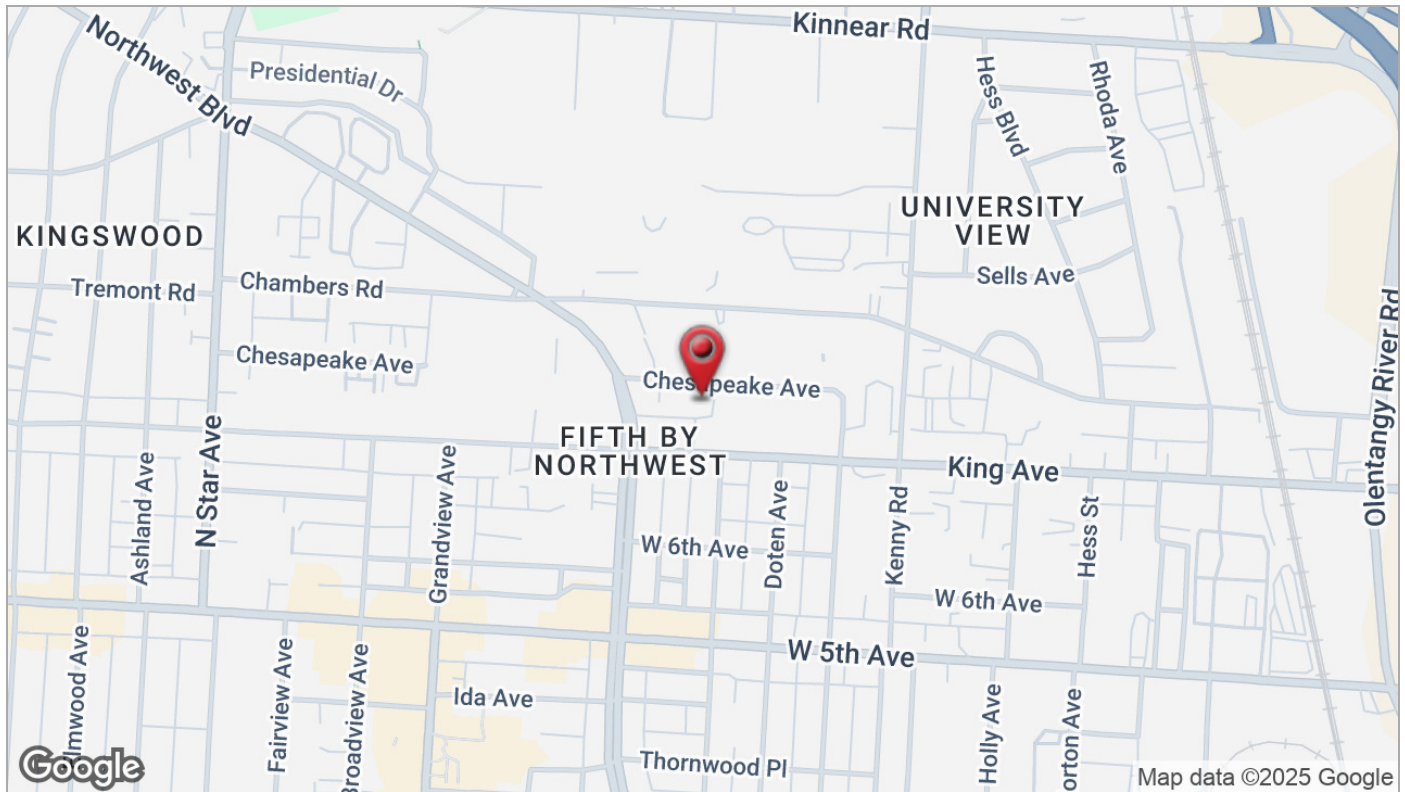
614 629 5221 • cberlin@ohioequities.com

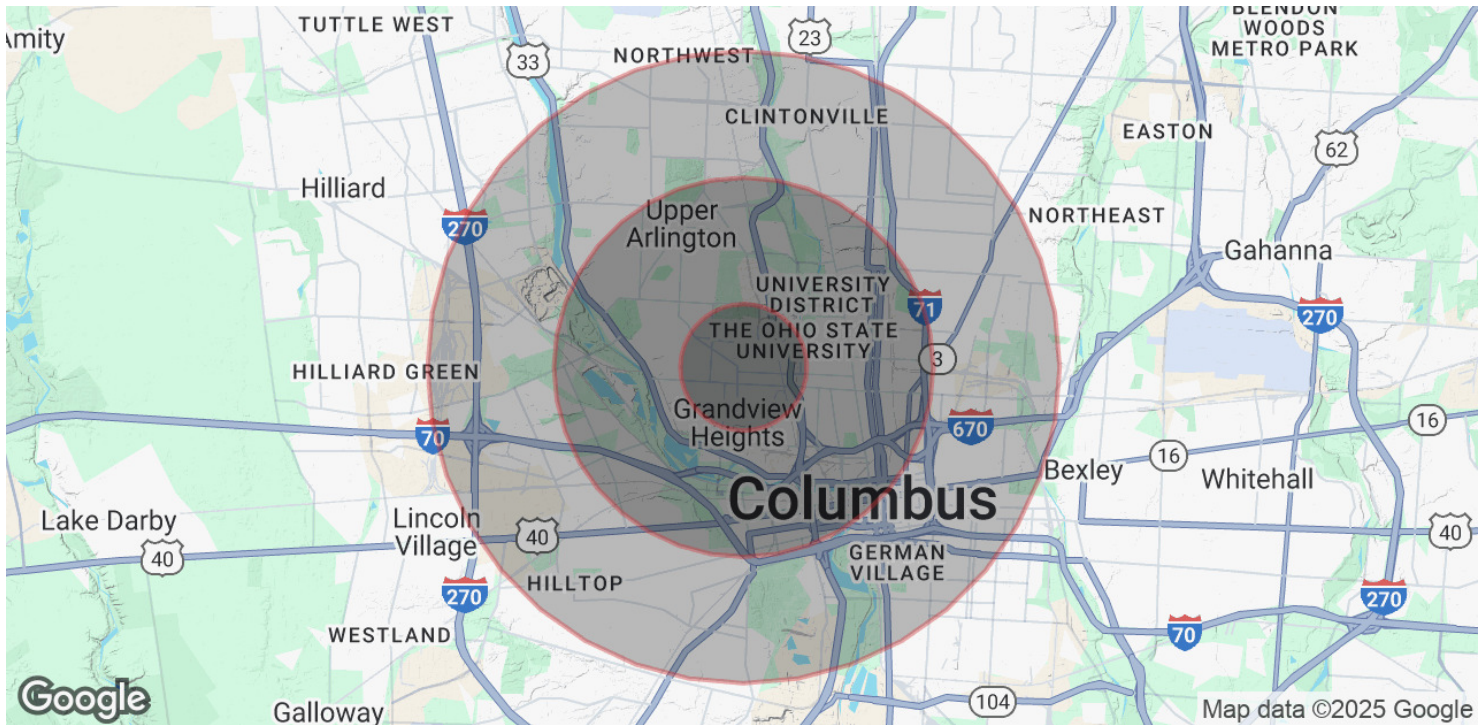




SUITE #	SPACE USE	LEASE RATE	LEASE TYPE	SIZE (SF)	DRIVE-INS	DOCKS	AVAILABILITY
1211R1	Office/Warehouse	\$10.00 SF/YR	Gross	±2,100 SF	1 (10' X 8')	0	2/1/2026







POPULATION	1 MILE	3 MILES	5 MILES
Total Population	19,566	148,333	339,377
Average Age	34	33	36
Average Age (Male)	35	33	36
Average Age (Female)	34	33	37
HOUSEHOLDS & INCOME	1 MILE	3 MILES	5 MILES
Total Households	11,450	65,876	148,447
# of Persons per HH	1.7	2.3	2.3
Average HH Income	\$108,288	\$98,439	\$92,941
Average House Value	\$470,821	\$414,362	\$355,019

Demographics data derived from AlphaMap