



# 1201 Grand Avenue

Billings, Montana 59102

## Property Highlights

- Units can be split into singular Executive Office Suites as needed
- Suite C-2,625 SF (8 Offices, Conference Room, Reception)
- Suite B-1,379 SF (3 Offices, Wet Bar, Reception)
- Elevator and Stairs with Common Area Bathrooms
- Abundant Surface Parking
- Monument Signage Available
- \$12.00/SF plus Utilities

## Property Description

Mid-town Billings Location with easy access to downtown and West Billings.



For more information

**Michael L. Walker**

O: 406 294 6304  
mwalker@naibusinessproperties.com

**Margaret Kirby**

O: 406 256 5000  
mkirby@naibusinessproperties.com

NO WARRANTY OR REPRESENTATION, EXPRESS OR IMPLIED, IS MADE AS TO THE ACCURACY OF THE INFORMATION CONTAINED HEREIN, AND THE SAME IS SUBMITTED SUBJECT TO ERRORS, OMISSIONS, CHANGE OF PRICE, RENTAL OR OTHER CONDITIONS, PRIOR SALE, LEASE OR FINANCING, OR WITHDRAWAL WITHOUT NOTICE, AND OF ANY SPECIAL LISTING CONDITIONS IMPOSED BY OUR PRINCIPALS NO WARRANTIES OR REPRESENTATIONS ARE MADE AS TO THE CONDITION OF THE PROPERTY OR ANY HAZARDS CONTAINED THEREIN ARE ANY TO BE IMPLIED.

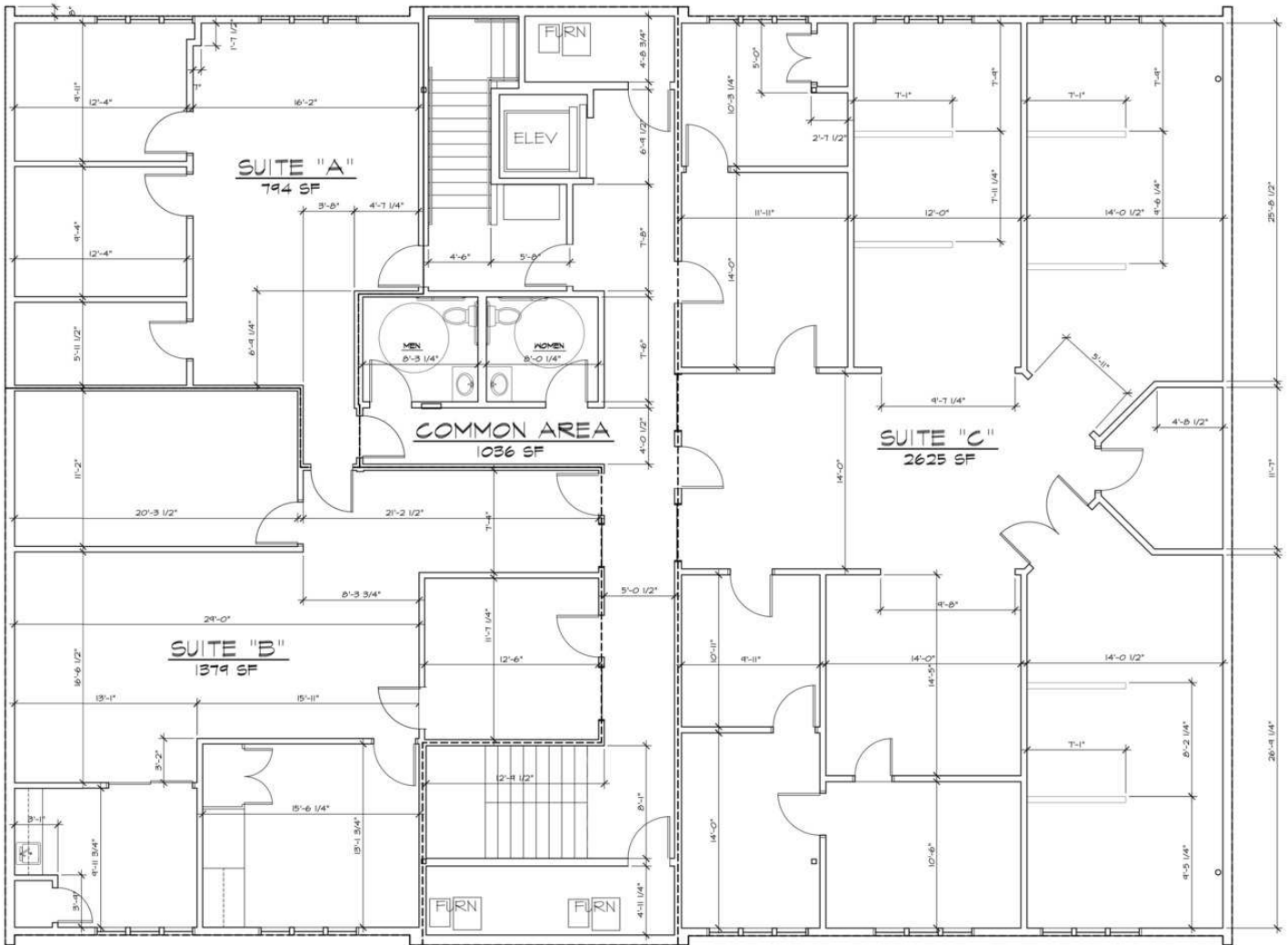
3412 Colton Blvd, Suite 201  
Billings, MT 59102  
406 256 5000 tel  
[naibusinessproperties.com](http://naibusinessproperties.com)



For Lease

# Office Space

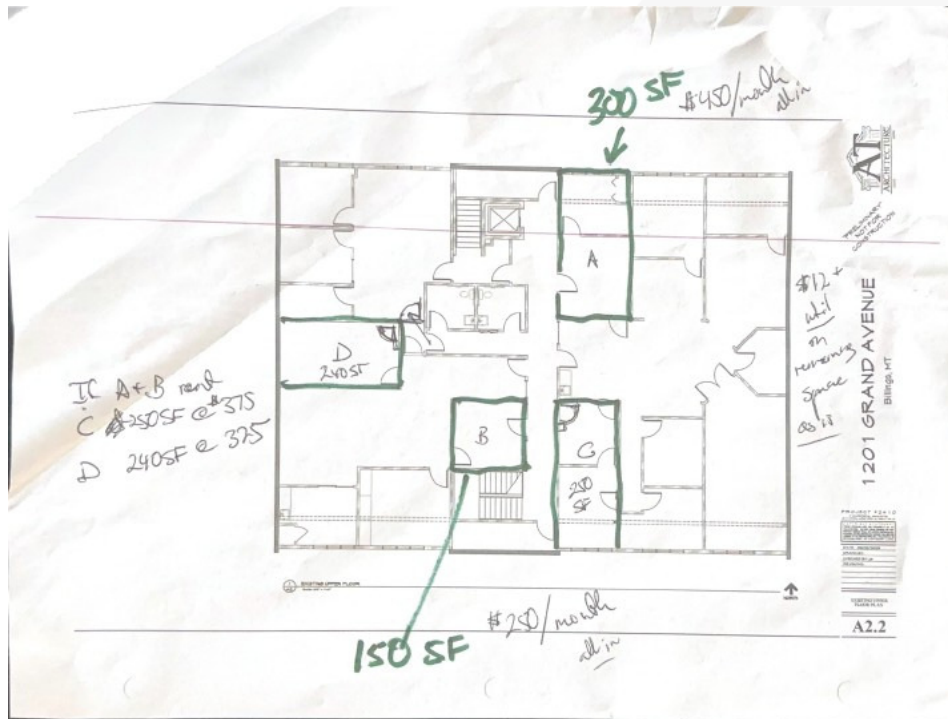
Mid-Town Location



For Lease

# Office Building

150 - 2,625 SF |



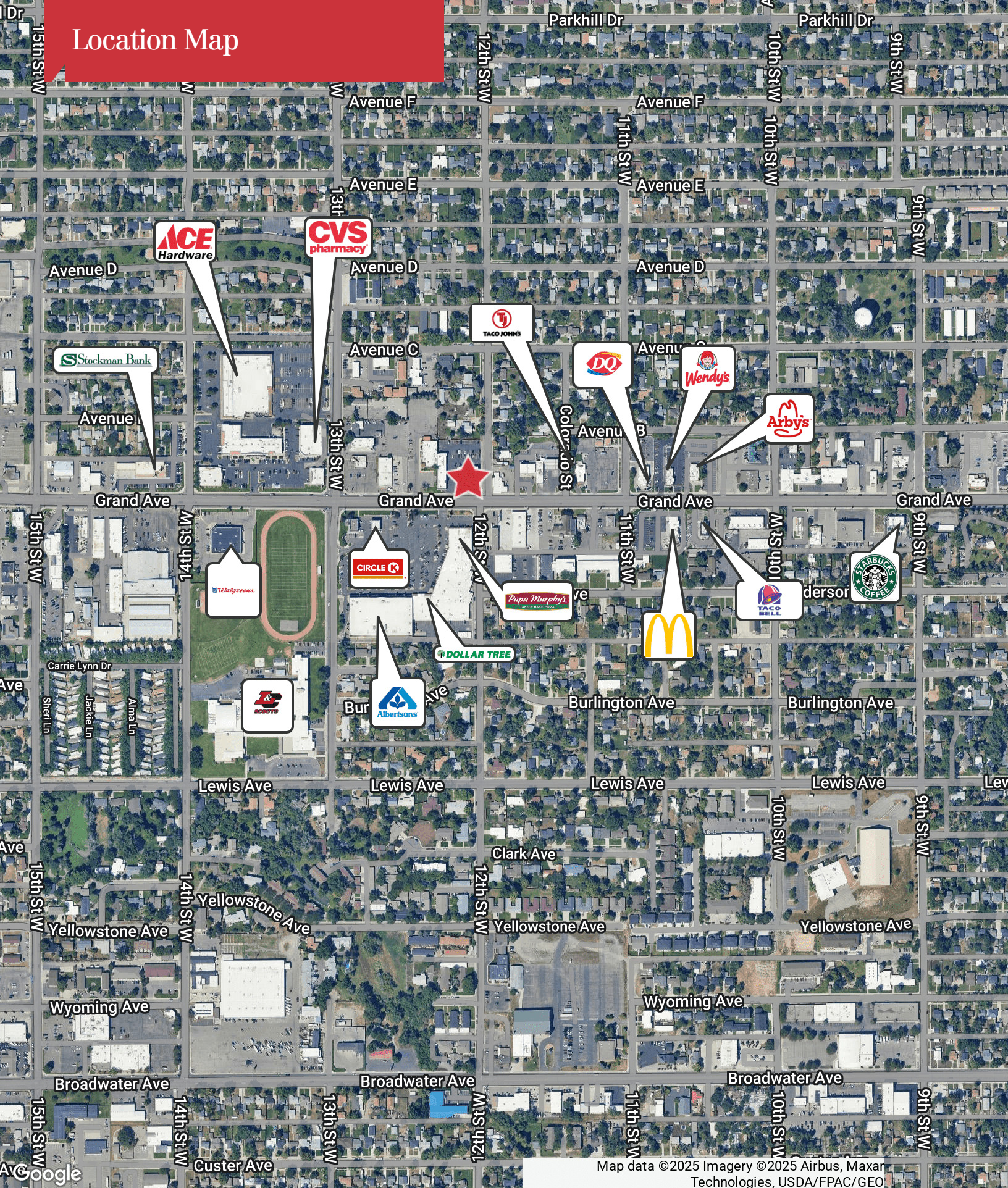
## LEASE INFORMATION

Lease Type:	MG; Gross	Lease Term:	Negotiable
Total Space:	150 - 2,625 SF	Lease Rate:	\$12 SF/yr

## AVAILABLE SPACES

SUITE	TENANT	SIZE (SF)	LEASE TYPE	LEASE RATE	DESCRIPTION
Suite C	Available	2,625 SF	Modified Gross	\$12.00 SF/yr	8 Offices, Conference Room, and Reception Area
Suite B	Available	1,379 SF	Modified Gross	\$12.00 SF/yr	3 Offices, Wet Bar, and Reception Area
Suite A - Executive Office	Available	300 SF	Gross	\$450 per month	-
Suite C - Executive Office	Available	250 SF	Gross	\$375 per month	-
Suite B - Executive Office	Available	150 SF	Gross	\$250 per month	-
Suite D - Executive Office	Available	240 SF	Gross	\$325 per month	-

# Location Map



Map data ©2025 Imagery ©2025 Airbus, Maxar Technologies, USDA/FPAC/GEO