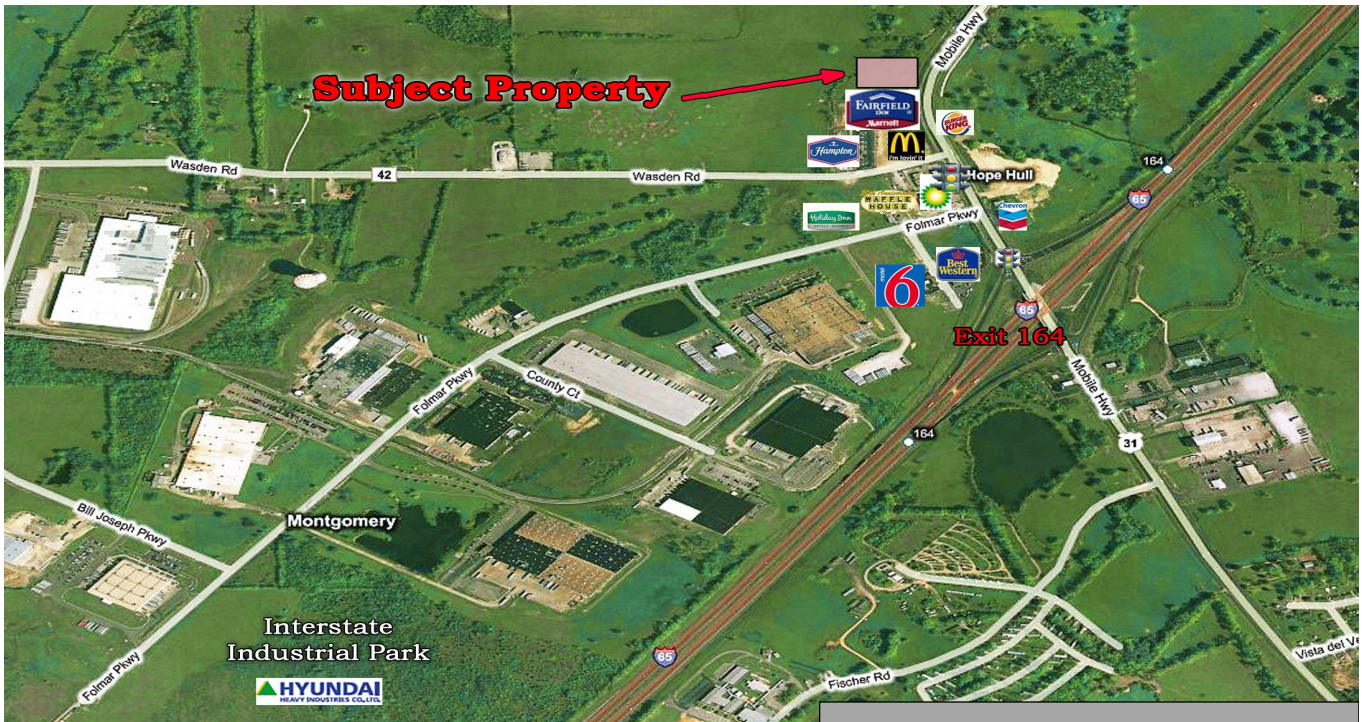




JOHN STANLEY  
&  
ASSOCIATES

COMMERCIAL REAL ESTATE



**Pirtle Property - Commercial Lot  
U.S. Hwy 31 & Wasden Road  
Hope Hull, AL 36043**

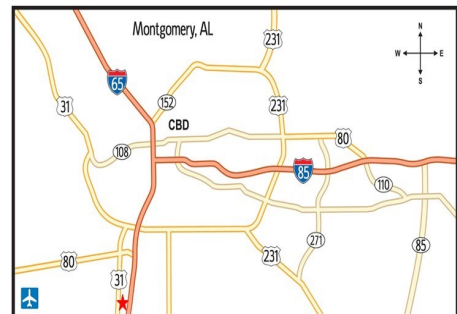
**FOR SALE**

- **Listed Price:** \$276,528.00 (\$7.77/S.F.)
- **Land Size:** ± 35,591 S.F.
- **Zoning:** B-2
- **Utilities:** Available to Property
- **Best Use:** Fast Food Restaurant, C-Store
- **Accessibility:** Good from I-65
- **Listing Type:** Exclusive

Great commercial lot. Excellent location for fast food, restaurant, bank or convenience store. Easy access to I-65 (at Exit 164) and Hyundai Heavy Plant. Call Mark Dauber for more information at (334) 271-2475.



Mark A. Dauber  
John Stanley & Associates, Inc.  
4747 Woodmere Boulevard  
Montgomery, AL 36106  
(334) 271-2475 Voice  
(334) 271-2421 Fax  
[mdauber@johnstanleyassociates.com](mailto:mdauber@johnstanleyassociates.com)  
[www.johnstanleyassociates.com](http://www.johnstanleyassociates.com)



All information is from sources deemed reliable, but no warranty is made as to the accuracy thereof and same is submitted subject to errors, omissions, change of price, or other conditions, such as prior sales or withdrawal without notice by John Stanley & Associates, Inc. or the Owner.

