

For Lease | Industrial

45 Feldland Street, Bohemia, NY



Building Size: 4,000 sf ±
Offices: 450 sf ±
Ceiling Height: 14' ±
Loading: 1 Drive-In
Heat: Gas
Power: 200 amps

- No Columns
- Good Parking
- Clean Space
- Just Off Veterans Memorial Hwy

Lease Price: \$ 16.50 psf gr

METRO
REALTY SERVICES LLC

201 Moreland Road, Ste 4, Hauppauge, NY 11788
(631) 770-0700 ~ info@metrorealtyservices.com
www.metrorealtyservices.com

Exclusive Agent:

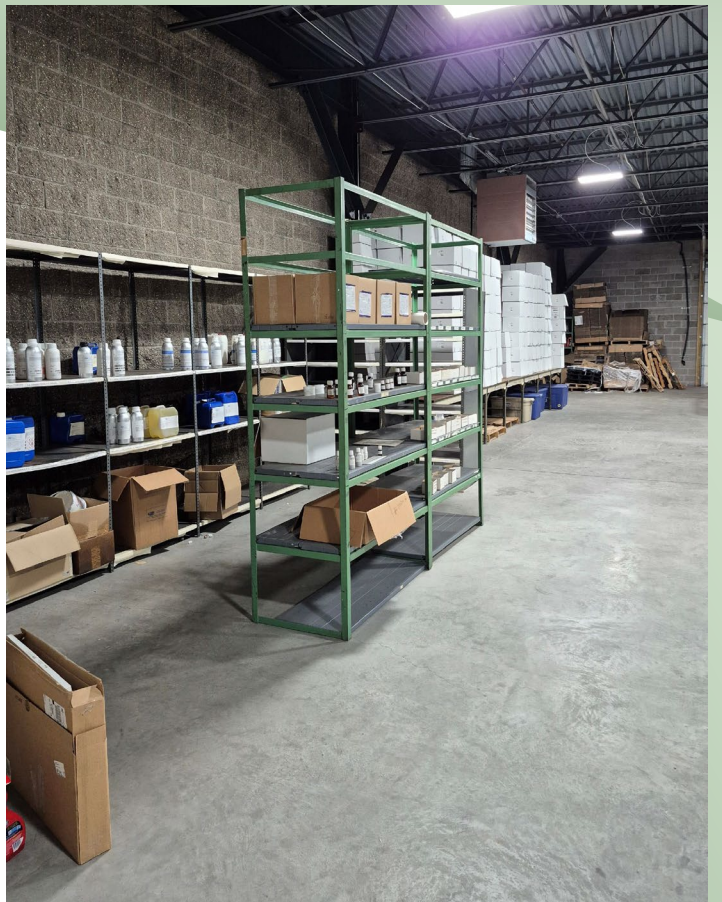
Andrew B. Blumenthal
Licensed Real Estate Broker
Managing Partner
Cell: [\(516\) 581-6140](tel:5165816140)
andy@metrorealtyservices.com

Modified: 3/31/2026

All information submitted is subject to errors, omissions, change of price or rental, change of other terms and conditions, prior sale, lease, financing or withdrawal without notice. All areas and dimensions are approximate. This advertisement does not suggest that the broker has a listing on this property or properties or that any property is currently available.

For Lease | Industrial

45 Feldland Street, Bohemia, NY



METRO

REALTY SERVICES LLC

201 Moreland Road, Ste 4, Hauppauge, NY 11788

(631) 770-0700 ~ info@metrorealtyservices.com

www.metrorealtyservices.com

Exclusive Agent:

Andrew B. Blumenthal
Licensed Real Estate Broker
Managing Partner

Cell: [\(516\) 581-6140](tel:(516)581-6140)

andy@metrorealtyservices.com

Modified: 3/31/2026

All information submitted is subject to errors, omissions, change of price or rental, change of other terms and conditions, prior sale, lease, financing or withdrawal without notice. All areas and dimensions are approximate. This advertisement does not suggest that the broker has a listing on this property or properties or that any property is currently available.