



Summary

Suite: 410
 Available SF: 3,146 SF
 Lease Rate: \$18.00/SF NNN
 (\$4,719/month)
 NNN: \$7.75/SF
 (\$2,032/month)
 Available: December 1, 2020

Property Highlights

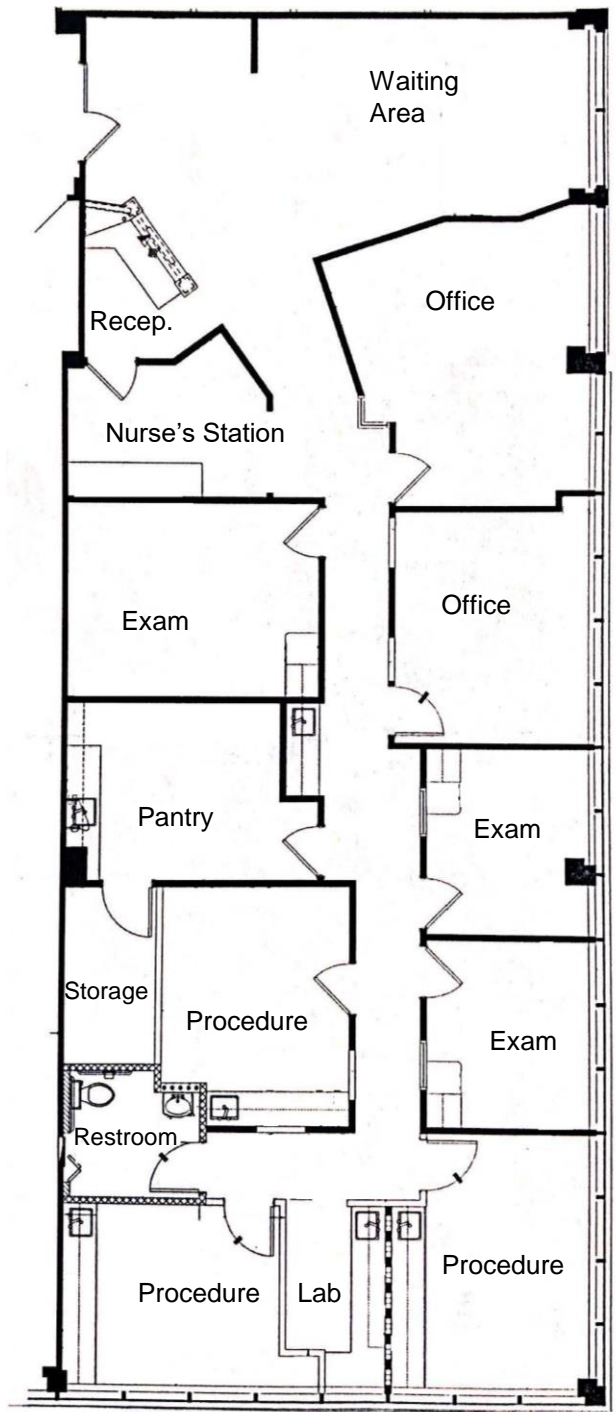
- Great location across the street from INOVA Loudoun Hospital
- Medical office buildout
- Double door suite entry right off elevator lobby
- Modern Finishes throughout
- Move in ready

Demographics	1 Mile	3 Miles	5 Miles
Total Households:	3,720	23,056	54,410
Total Population:	8,774	63,850	154,958
Average HH Income	\$149,752	\$168,928	\$157,962

The information above was furnished to us by sources we believe to be reliable, but no warranty or representation is made to its accuracy. It is your responsibility to independently confirm its accuracy and completeness. This offering is subject to correction or errors and omissions, change of pricing, prior to sale/lease or withdrawal from the market, without notice.

Ellie Bechtle
 703.435.4007 x 107
 ebechtle@veritycommercial.com

Floor Plan



Suite Photos

