



CUSHMAN &
WAKEFIELD



6,800 SF
INDUSTRIAL / AUTOMOTIVE BUILDING

FOR SALE

1340 W CENTRAL BLVD
ORLANDO FL 32805

PROPERTY SUMMARY

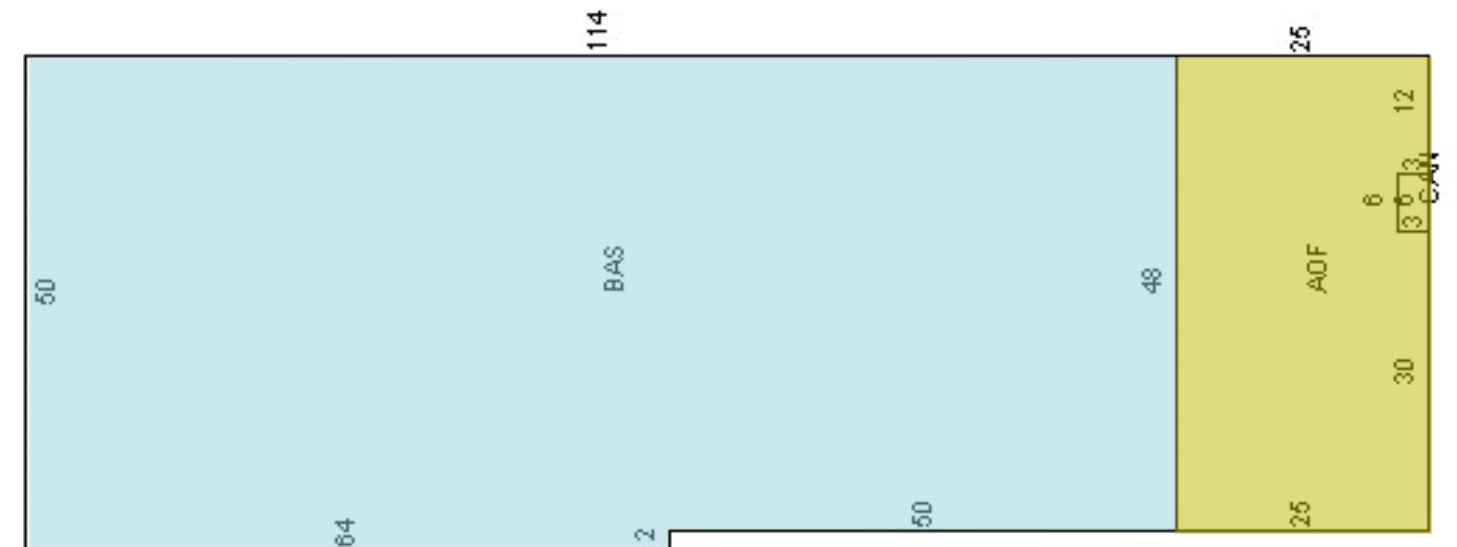
1340 W Central Blvd is positioned in a highly coveted spot at the heart of Orlando's Central Business District and 1 block from Camping World Stadium, this property represents a unique opportunity within one of the city's most vital commercial hubs. Its location places businesses at the center of the Greater Orlando area, offering outstanding advantages for companies focused on broad geographic access. Connectivity is one of its strongest assets, with immediate routes to major thoroughfares such as I 4, SR 408, Orange Blossom Trail, and SR 50—providing smooth transportation flow and making it convenient for workforce commuting and client visits.

Built to handle a variety of business needs, this property is a perfect match for an owner occupier who wants full command of their space. Its adaptable layout makes it easy to tailor the site to your exact operations, while still delivering strong long term upside. With the surrounding area steadily gaining value, this location offers a standout opportunity—ideal for putting to work right now, with the added benefit of meaningful appreciation down the road.

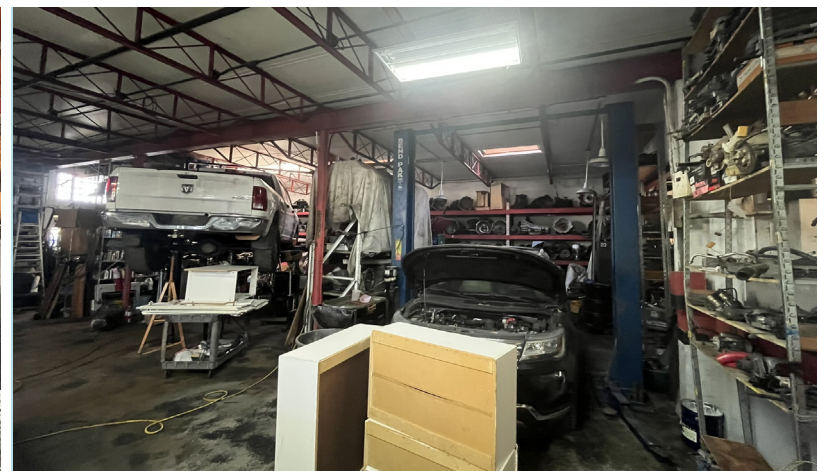
PROPERTY FEATURES			
Building Size:	6,800 SF	Price:	Call for Price
Site Area:	.17 Acres	Construction:	Concrete Block
Year Build:	1950	Restrooms:	2
Clear Height:	20' to peak	Power:	3 phase 480 amp
Loading Doors	1 (Grade Level)	Utilities:	City of Orlando
Door Size:	14'w x 13'h	Zoning:	ORL-I-G

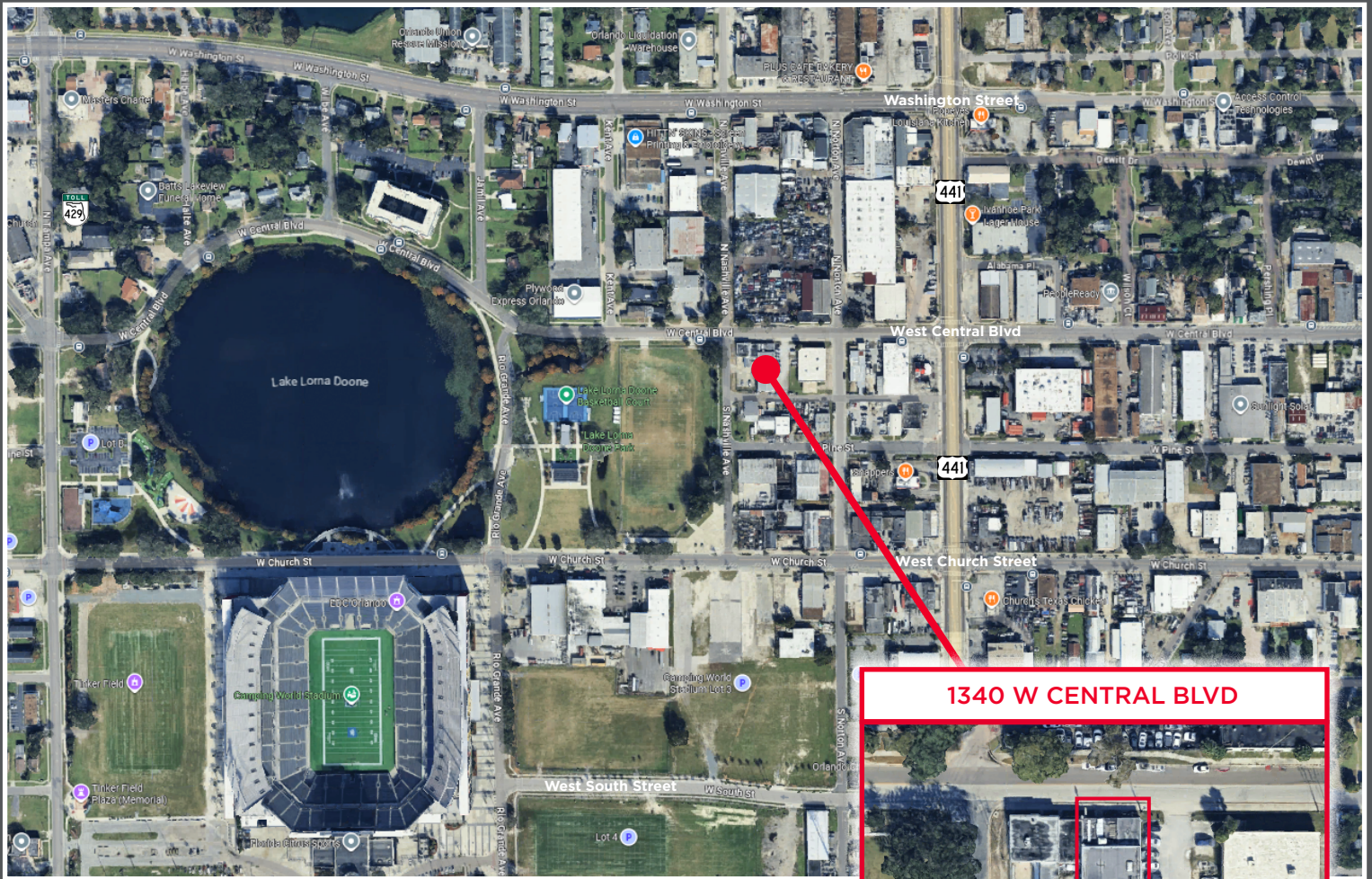
FLOOR PLAN

6,800 SF



- 1,100± SF Office Space
- 5,700± SF Warehouse





1340 W CENTRAL BLVD

CONTACT

Sam King

Senior Associate
 Sales & Acquisitions | Central FL
 Direct: +1 407 949 0898
 Cell: +1 407 341 7728
sam.j.king@cushwake.com

Glen Jaffee

Senior Director
 Sales & Acquisitions | Central FL
 Direct: +1 407 541 4408
 Cell: +1 407 353-3426
glen.jaffee@cushwake.com



©2026 CUSHMAN & WAKEFIELD. ALL RIGHTS RESERVED. THE INFORMATION CONTAINED IN THIS COMMUNICATION IS STRICTLY CONFIDENTIAL. THIS INFORMATION HAS BEEN OBTAINED FROM SOURCES BELIEVED TO BE RELIABLE BUT HAS NOT BEEN VERIFIED. NO WARRANTY OR REPRESENTATION, EXPRESS OR IMPLIED, IS MADE AS TO THE CONDITION OF THE PROPERTY (OR PROPERTIES) REFERENCED HEREIN OR AS TO THE ACCURACY OR COMPLETENESS OF THE INFORMATION CONTAINED HEREIN, AND SAME IS SUBMITTED SUBJECT TO ERRORS, OMISSIONS, CHANGE OF PRICE, RENTAL OR OTHER CONDITIONS, WITHDRAWAL WITHOUT NOTICE, AND TO ANY SPECIAL LISTING CONDITIONS IMPOSED BY THE PROPERTY OWNER(S). ANY PROJECTIONS, OPINIONS OR ESTIMATES ARE SUBJECT TO UNCERTAINTY AND DO NOT SIGNIFY CURRENT OR FUTURE PROPERTY PERFORMANCE.