

# 4201 NORTHVIEW DRIVE

Bowie, MD 20716

## Office For Lease

2,128 - 9,505 SF



Leasing Information:  
410.659.1234

# Lincoln

**Brent Prossner**  
410.659.1234 x122  
bprossner@lpc.com

**Kyle Bell**  
410.659.1234 x117  
kbell@lpc.com

**Richard Coppola**  
301.304.8405  
rcoppola@lpc.com

Lincoln Property Company  
300 W Pratt Street Suite 520  
Baltimore, MD 21201

[www.lpc.com](http://www.lpc.com)

# 4201 NORTHVIEW DRIVE

Bowie, MD 20716

Office For Lease



## Property Highlights

- Class A Office Space in Bowie
- Building signage available
- Parking ratio of 4/1,000 SF
- Across from Bowie Town Center (Chipotle, Panera Bread, DuClaw, etc.)
- Shared conference center
- Spec suites available
- Easy access to Washington, D.C., Baltimore and Annapolis
- On-site management
- Atrium lobby with skylights
- Corner balconies
- Courtyard

## Availabilities

Suite 200  
Suite 223  
Suite 303  
Suite 308  
Suite 315  
Suite 405  
Suite 408

## SF

3,481 SF  
4,935 SF  
9,505 SF  
3,241 SF  
2,128 SF  
3,974 SF  
4,300 SF

## Date Available

Immediately  
Immediately  
Immediately  
Immediately  
6/1/2025  
Immediately  
Immediately

**Brent Prossner**

410.659.1234 x122  
bprossner@lpc.com

**Kyle Bell**

410.659.1234 x117  
kbell@lpc.com

**Richard Coppola**

301.304.8405  
rcoppola@lpc.com

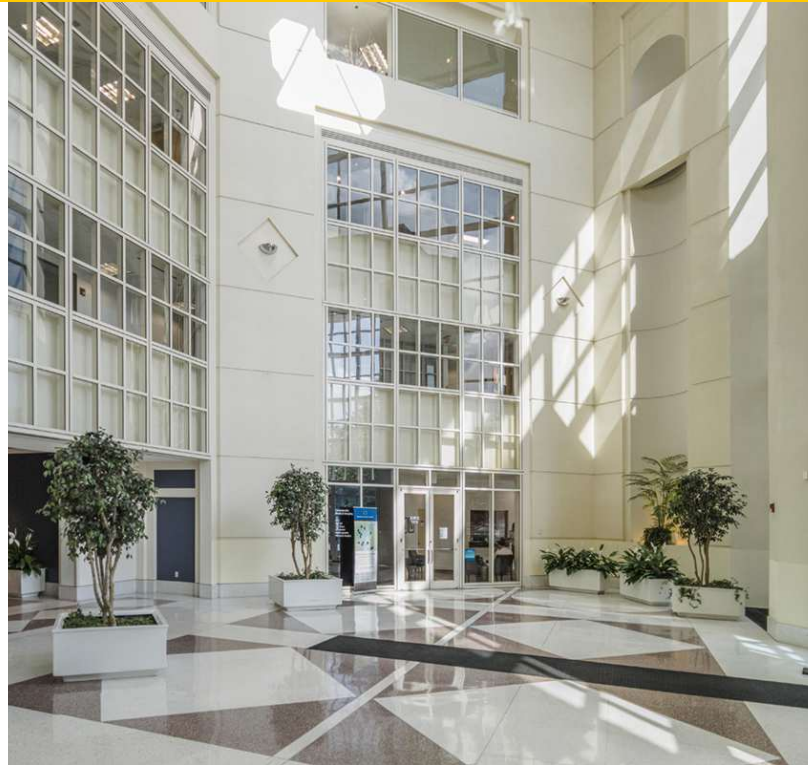
**Lincoln**



# 4201 NORTHVIEW DRIVE

Bowie, MD 20716

Additional Photos



**Brent Prossner**  
410.659.1234 x122  
bprossner@lpc.com

**Kyle Bell**  
410.659.1234 x117  
kbell@lpc.com

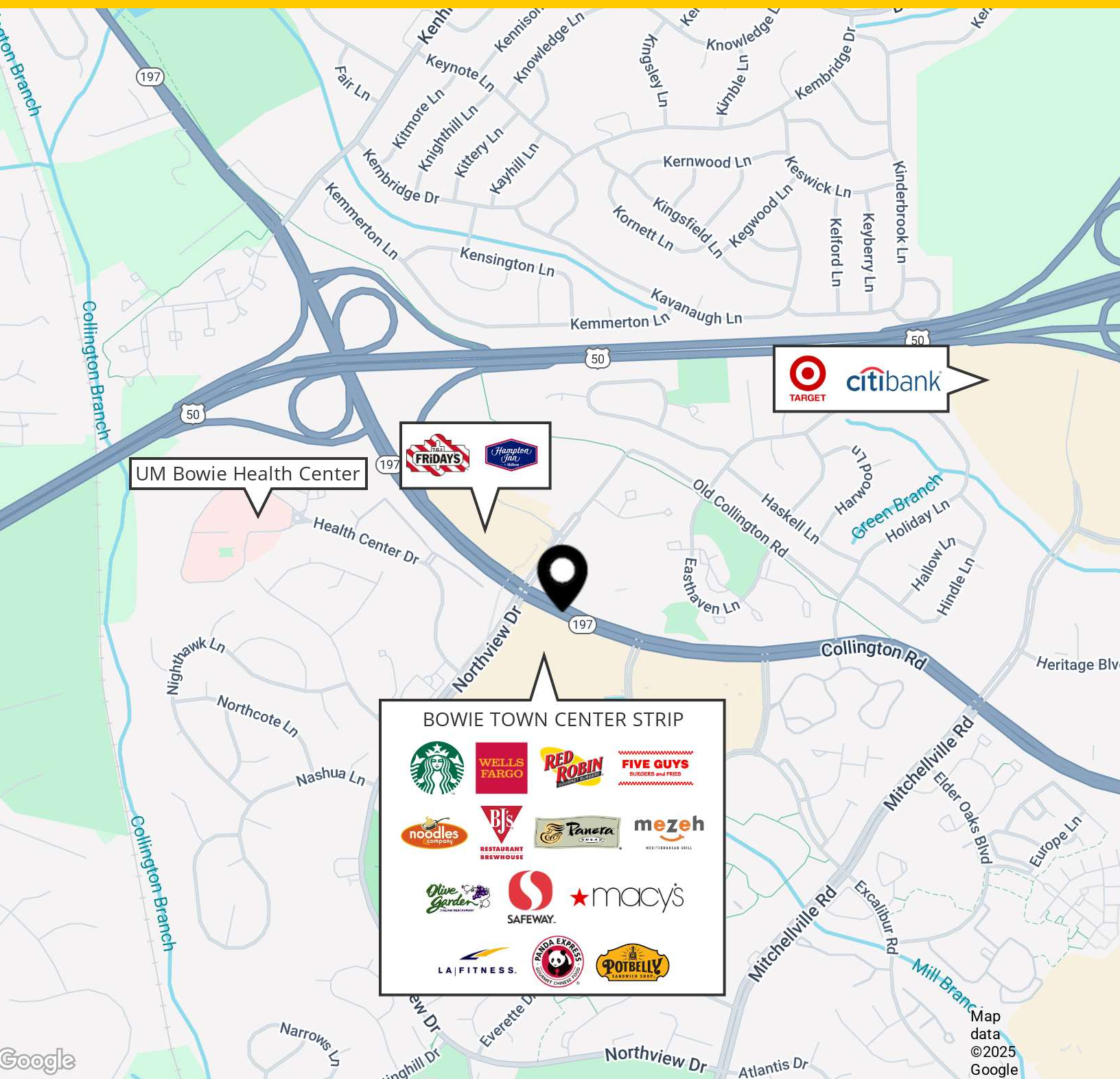
**Richard Coppola**  
301.304.8405  
rcoppola@lpc.com

**Lincoln**



## Nearby Amenities

Bowie, MD 20716



**Brent Prossner**  
410.659.1234 x122  
bprossner@lpc.com

**Kyle Bell**  
410.659.1234 x117  
kbell@lpc.com

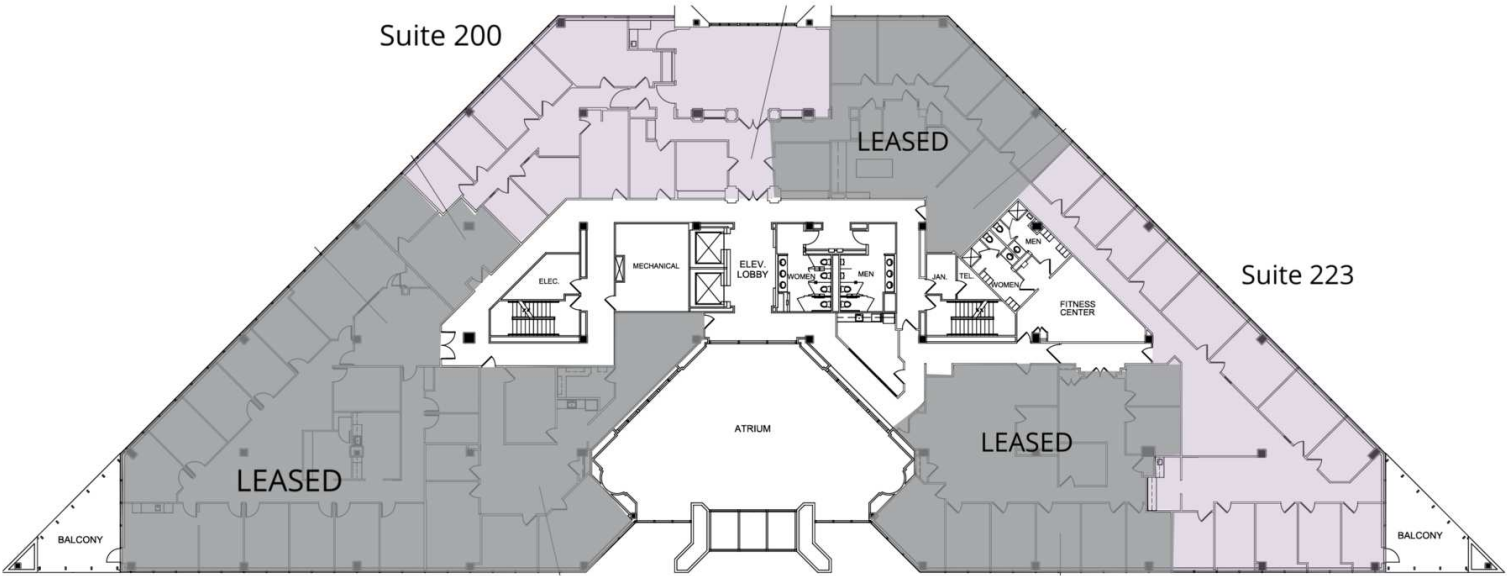
**Richard Coppola**  
301.304.8405  
rcoppola@lpc.com

# Lincoln

# 4201 NORTHVIEW DRIVE

Bowie, MD 20716

2nd Floor



| Suite       | Size     | Description           |
|-------------|----------|-----------------------|
| ■ Suite 200 | 3,481 SF | Available Immediately |
| ■ Suite 223 | 4,935 SF | Available Immediately |

**Brent Prossner**  
410.659.1234 x122  
bprossner@lpc.com

**Kyle Bell**  
410.659.1234 x117  
kbell@lpc.com

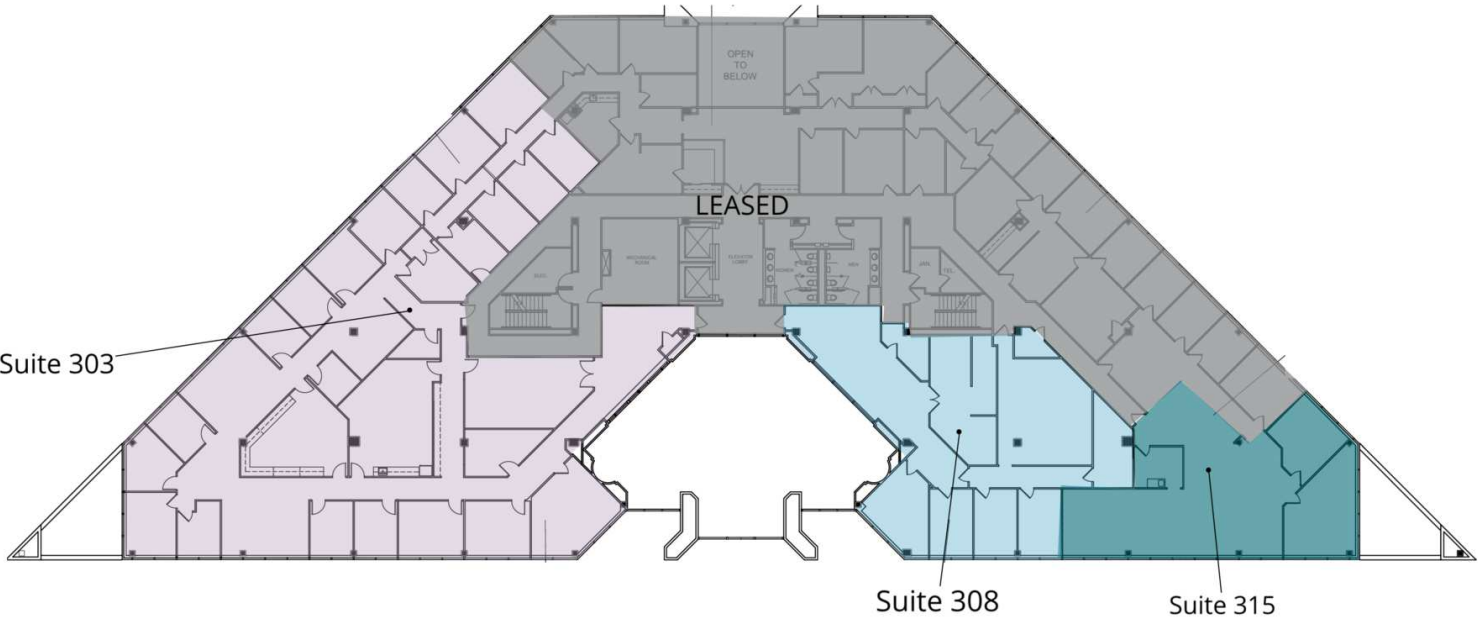
**Richard Coppola**  
301.304.8405  
rcoppola@lpc.com




Lincoln

# 4201 NORTHVIEW DRIVE

Bowie, MD 20716

3rd Floor



| Suite   | Size     | Description            |
|---|----------|------------------------|
|  Suite 303 | 9,505 SF | Available Immediately  |
|  Suite 308 | 3,241 SF | Available Immediately  |
|  Suite 315 | 2,128 SF | Available June 1, 2025 |

**Brent Prossner**  
410.659.1234 x122  
bprossner@lpc.com

**Kyle Bell**  
410.659.1234 x117  
kbell@lpc.com

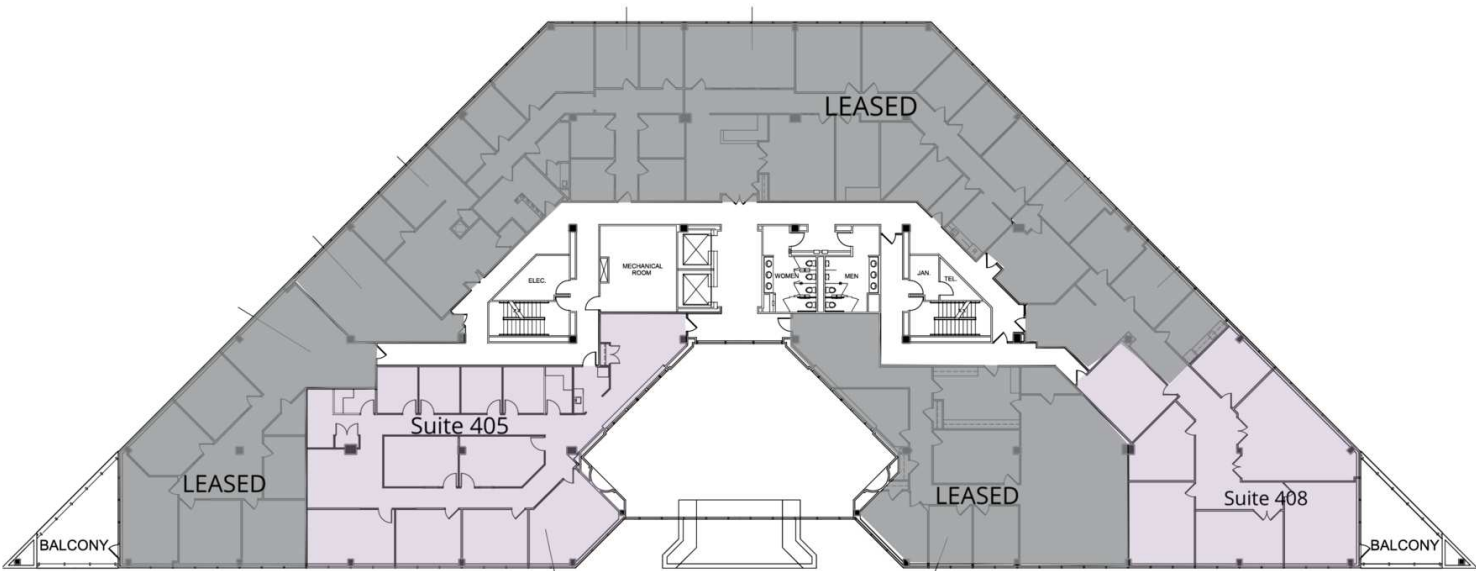
**Richard Coppola**  
301.304.8405  
rcoppola@lpc.com

Lincoln

# 4201 NORTHVIEW DRIVE

Bowie, MD 20716

4th Floor



| Suite       | Size     | Description           |
|-------------|----------|-----------------------|
| ■ Suite 405 | 3,974 SF | Available Immediately |
| ■ Suite 408 | 4,300 SF | Available Immediately |

**Brent Prossner**  
410.659.1234 x122  
bprossner@lpc.com

**Kyle Bell**  
410.659.1234 x117  
kbell@lpc.com

**Richard Coppola**  
301.304.8405  
rcoppola@lpc.com

Lincoln





# 4201 NORTHVIEW DRIVE

Bowie, MD 20716

Leasing Information:  
410.659.1234

**Brent Prossner**  
410.659.1234 x122  
bprossner@lpc.com

**Kyle Bell**  
410.659.1234 x117  
kbell@lpc.com

**Richard Coppola**  
301.304.8405  
rcoppola@lpc.com

## Lincoln

Lincoln Property Company  
300 W Pratt Street Suite 520  
Baltimore, MD 21201

[www.lpc.com](http://www.lpc.com)