

For Lease Multi-Tenant Flex

5800 Center

5727-5807 S Garnett Rd, Tulsa, OK 74146

WIGGIN
PROPERTIES, LLC

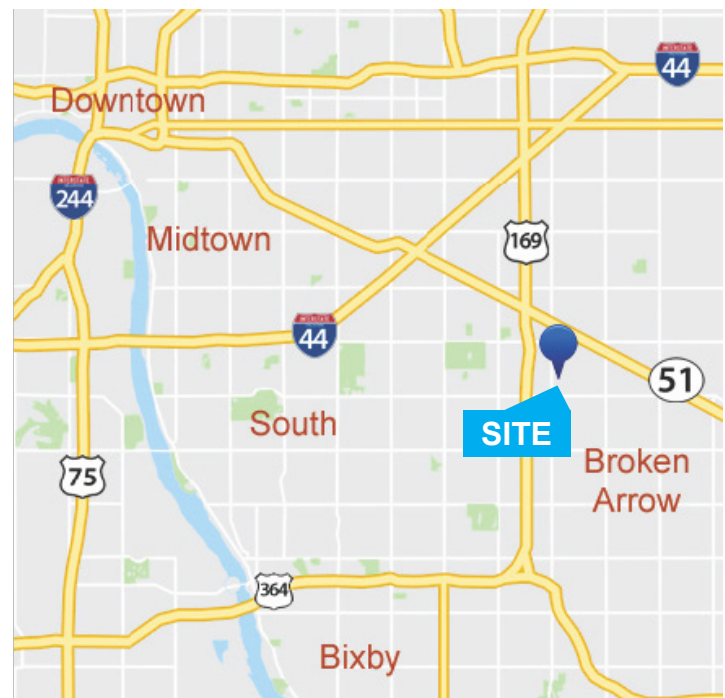


Property Features

- SF Available: $\pm 1,341$ SF to $\pm 1,604$ SF
- 14' Clear Height
- 10' x 10' Overhead Doors
- Zoned IL (Light Industrial District)
- 647' Garnett Rd. Frontage
- Close Proximity to BA Expressway and Highway 169

Demographics

2021	1 Mile	3 Miles	5 Miles
Population	4,488	87,902	234,005
Average HH Income	\$72,396	\$74,815	\$82,127
Owner Occupied Units	914	17,460	53,725
Renter Occupied Units	817	17,586	39,903



Call Shawna Hale, CCIM, or John Watchous at **918.935.2010**

shale@wiggprop.com | jwatchous@wiggprop.com | wiggprop.com

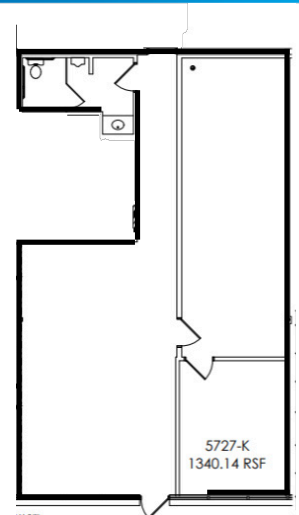
This material is provided for information purposes only. It is from sources believed to be reliable. However, Wiggins Properties makes no warranties or representations, expressed or implied, as to the accuracy or sufficiency of the information. It is presented subject to errors, omissions, changes or withdrawal without notice. Square footage is provided by the local County Assessor or the Owner. Photos and graphics with copyrights by Costar, Google, Wiggins Properties and independent contractors are used with permission.

5800 Center

5727-5807 S Garnett Rd, Tulsa, OK 74146

5727 S Garnett Rd, Suite K

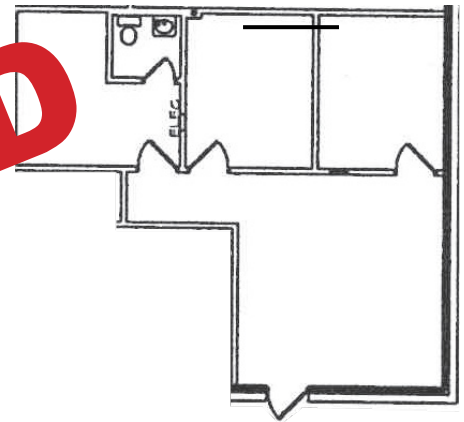
- \pm 1,341 SF
- (1) ADA Restroom
- Space Ready for Tenant Specific Finish
- TI Allowance Available for Qualified Tenants



5727 S Garnett Rd, Suite G

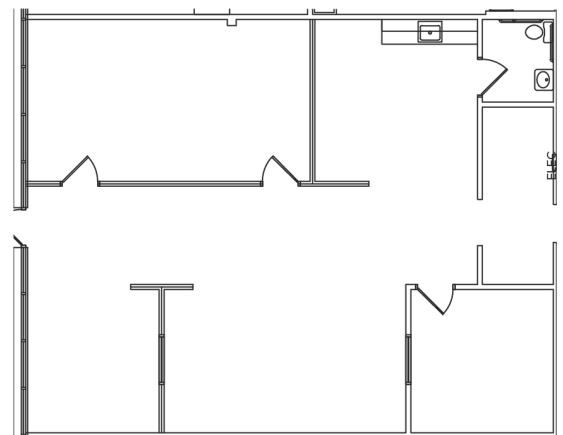
- \pm 765 SF
- Reception Area
- Breakroom
- (2) Offices
- (1) Restroom
- Wet bar
- Nice Interior Finish

LEASED



5727 S Garnett Rd, Suite E

- \pm 1,604 SF
- Reception Area
- Conference Room
- (1) Private Office
- (1) Restroom
- Ample Open Workspace / Sales Floor



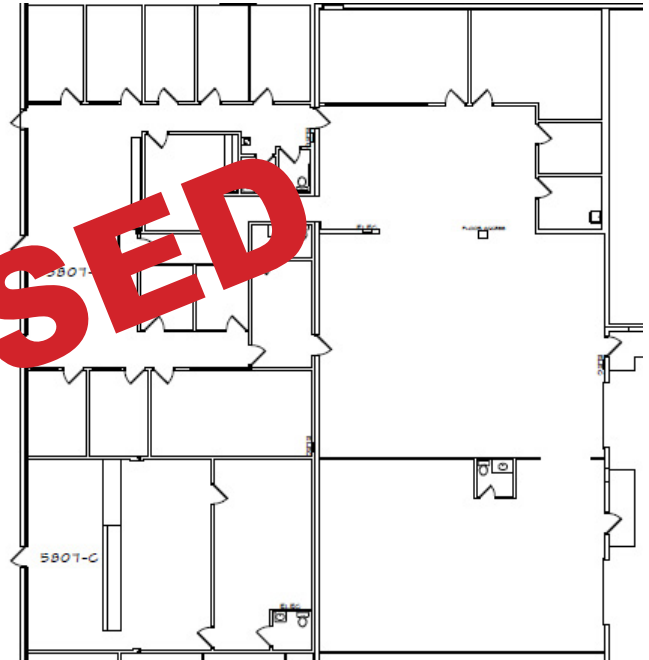
Call Shawna Hale, CCIM, or John Watchous at **918.935.2010**

5800 Center

5727-5807 S Garnett Rd, Tulsa, OK 74146

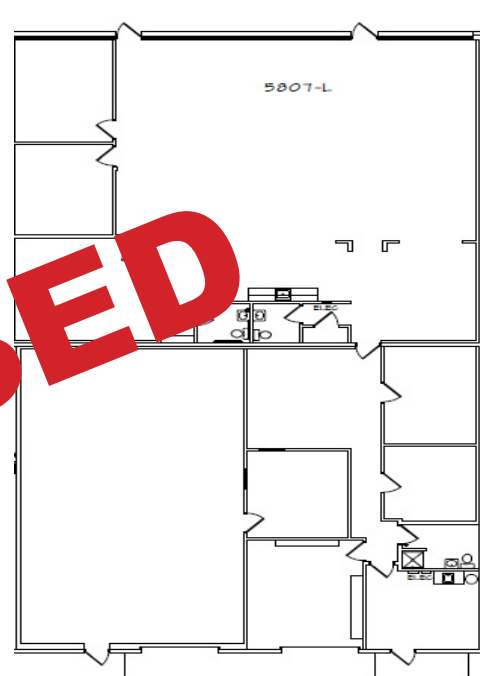
5807 S Garnett Rd, Suite F

- \pm 10,179 SF (*divisible*)
- Reception, (9) Offices, Conference Room, Break Room
- (2) Restrooms
- (1) 10 x 14 OHD
- (2) 10 x 10 OHD
- Partially Climate Controlled Warehouse



5807 S Garnett Rd, Suite L

- \pm 6,063 SF
- \pm 1,500 SF Warehouse
- Reception, (7) Offices
- (3) Restrooms
- (1) 10 x 10 OHD
- Open Work Space/Bull Pen



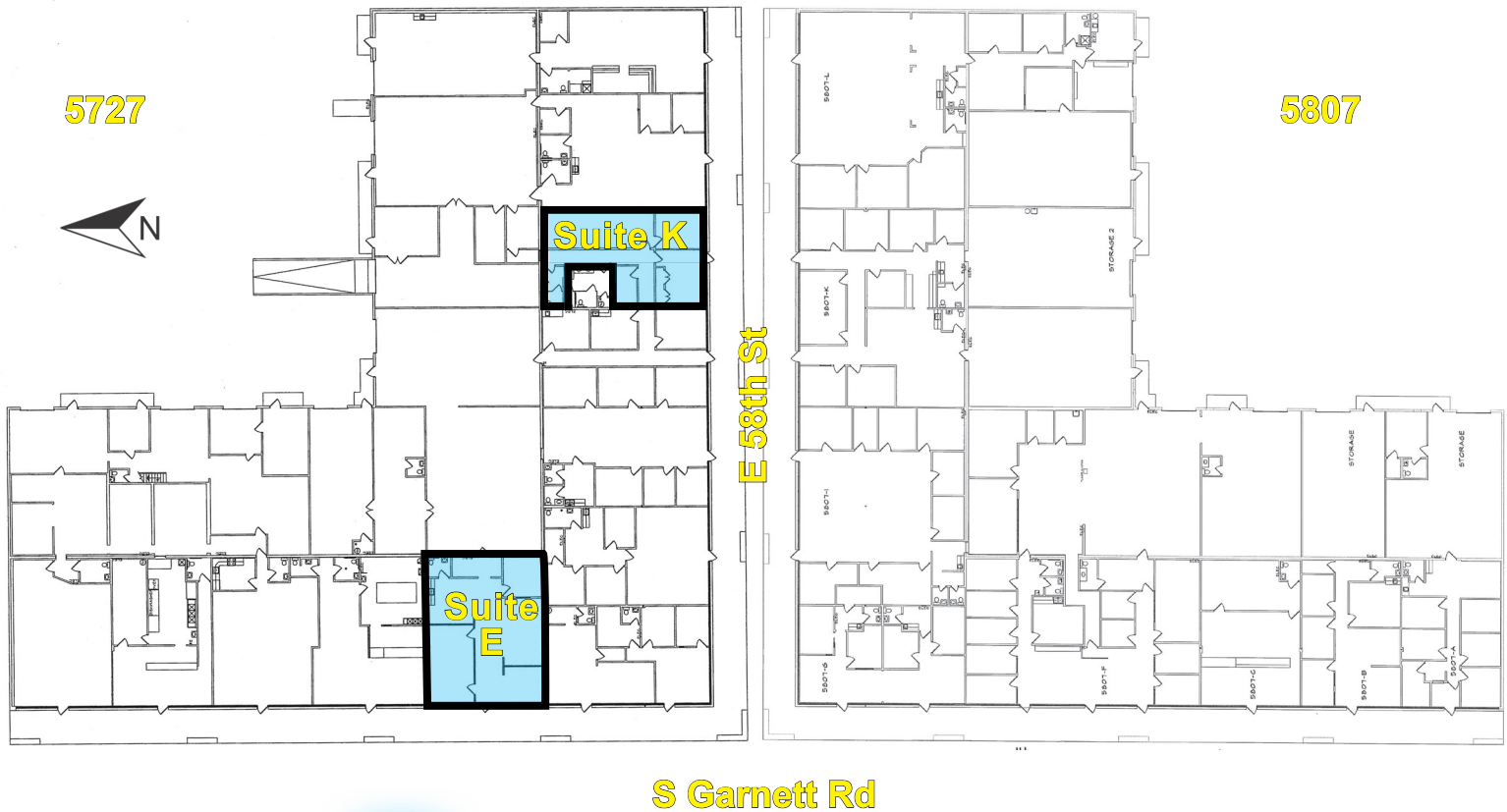
Call Shawna Hale, CCIM, or John Watchous at **918.935.2010**

For Lease Multi-Tenant Flex

5800 Center

5727-5807 S Garnett Rd, Tulsa, OK 74146

WIGGIN
PROPERTIES, LLC



Call Shawna Hale, CCIM, or John Watchous at **918.935.2010**

shale@wigginprop.com | jwatchous@wigginprop.com | wigginprop.com

This material is provided for information purposes only. It is from sources believed to be reliable. However, Wiggin Properties makes no warranties or representations, expressed or implied, as to the accuracy or sufficiency of the information. It is presented subject to errors, omissions, changes or withdrawal without notice. Square footage is provided by the local County Assessor or the Owner. Photos and graphics with copyrights by Costar, Google, Wiggin Properties and independent contractors are used with permission.